

APPENDIX 3

ATC DATA FROM SITES ON KEY CENTRE CORDON

ATC DATA FROM SITES ON KEY CENTRE CORDON

This section presents profiles of traffic entering the key centre, derived from automatic traffic counts over two consecutive weeks in September-November 2009 on roads with at least 2000 vehicles per day.

The five day average flow for time period 0700-1000, combined with those from the other key centres in Greater Manchester (excluding Manchester), provides the 2009/10 data for the mandatory indicator LTP6b: Peak traffic flows to other Greater Manchester key centres.

This section presents data for each site as follows:

Site	Description	Direction
00810411	A6043 Wellington Road	Eastbound
00810421	Henrietta Street	Southbound
00810431	A670 Penny Meadow	Westbound
00810441	Stamford Street Central	Westbound
00810451	Old Street*	Eastbound
00810460	Katherine Street	Northeast bound
00810470	Turner Lane*	Southbound

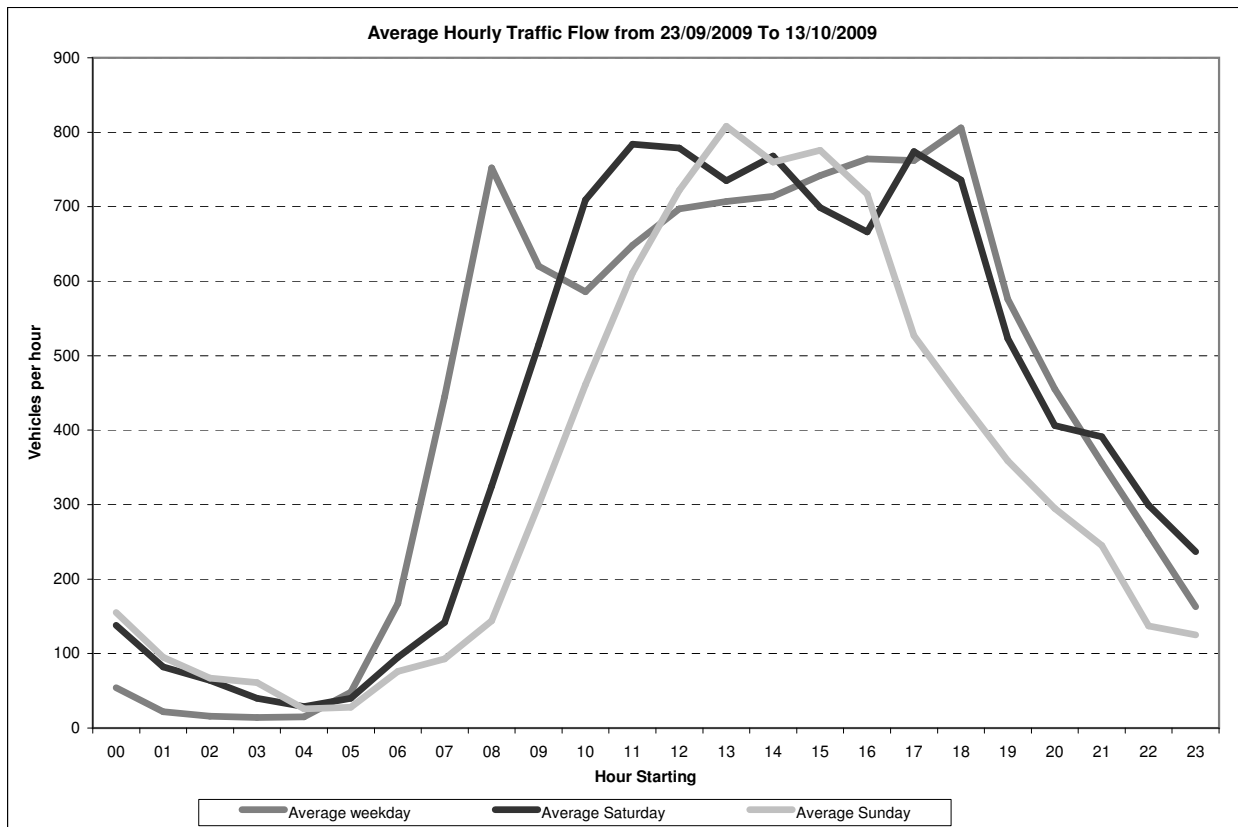
*2009 data for Old Street and Turner Lane is unavailable. Consequently, summary estimates for all sites in the key centre in 2009 are not available. Estimates for the morning peak period and 24-hour average weekday using factors derived from manual counts conducted in 2008 and 2009 are given in the Key Centre Monitoring section of the main report.

Greater Manchester Transportation Unit
Automatic Traffic Counter Data From 23/09/2009 To 13/10/2009
Site No: 00810411 A6043 Wellington Road Ashton-U-Lyne Tameside

East bound

Average vehicle flows (excluding School Holidays, Bank Holidays, roadworks etc)

Hour starting	Mon	Tues	Wed	Thurs	Fri	Sat	Sun	5-day	7-day
00	55	41	56	54	63	138	155	54	80
01	26	20	18	19	29	82	95	22	41
02	21	8	16	16	20	64	67	16	30
03	15	10	12	16	16	40	61	14	24
04	20	11	14	14	16	29	26	15	19
05	44	50	50	47	47	40	28	48	44
06	182	164	161	159	168	95	76	167	144
07	427	440	451	449	458	142	93	445	351
08	731	748	781	749	750	325	144	752	604
09	562	651	610	617	661	515	300	620	559
10	552	623	574	575	605	709	461	586	586
11	631	651	628	651	678	784	611	648	662
12	632	692	663	700	799	779	722	697	712
13	700	676	689	681	788	735	808	707	725
14	706	701	684	697	784	768	760	714	729
15	735	728	728	713	807	699	776	742	741
16	758	823	729	775	733	666	717	764	743
17	766	755	766	750	775	774	527	762	730
18	733	841	831	830	796	736	441	806	744
19	511	520	603	608	639	523	359	576	538
20	426	421	450	506	474	406	295	455	425
21	312	323	370	375	398	391	245	356	345
22	199	314	244	235	310	299	137	260	248
23	92	160	152	150	263	237	125	163	168
TOTALS									
12 hour (0700-1900)	7933	8329	8134	8187	8634	7632	6360	8243	7886
am peak (0700-1000)	1720	1839	1842	1815	1869	982	537	1817	1514
off peak (1000-1600)	3956	4071	3966	4017	4461	4474	4138	4094	4155
pm peak (1600-1900)	2257	2419	2326	2355	2304	2176	1685	2332	2217
24 hour (0000-2400)	9836	10371	10280	10386	11077	9976	8029	10389	9992

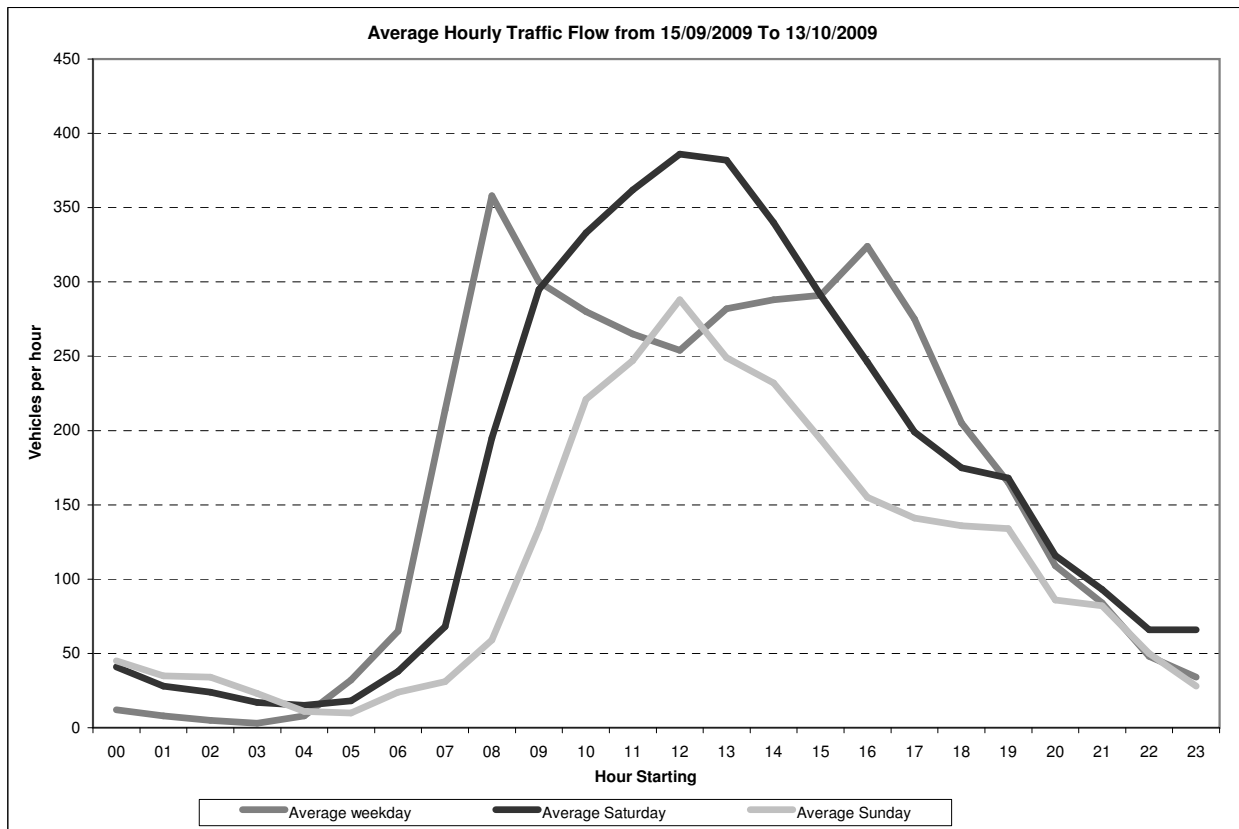


Greater Manchester Transportation Unit
Automatic Traffic Counter Data From 15/09/2009 To 13/10/2009
Site No: 00810421 Henrietta Street Ashton-U-Lyne Tameside

South bound

Average vehicle flows (excluding School Holidays, Bank Holidays, roadworks etc)

Hour starting	Mon	Tues	Wed	Thurs	Fri	Sat	Sun	5-day	7-day
00	11	9	12	15	15	41	45	12	21
01	9	8	8	7	8	28	35	8	15
02	5	4	4	4	6	24	34	5	12
03	6	2	1	5	3	17	23	3	8
04	8	8	10	6	9	15	11	8	10
05	34	36	30	31	31	18	10	32	27
06	73	70	60	62	62	38	24	65	56
07	208	223	222	215	204	68	31	214	167
08	357	364	364	344	361	195	59	358	292
09	308	286	285	296	327	295	134	300	276
10	276	288	270	271	296	333	221	280	279
11	252	273	257	261	283	362	247	265	276
12	231	262	254	240	284	386	288	254	278
13	293	265	272	289	293	382	249	282	292
14	283	274	293	281	307	340	232	288	287
15	264	274	265	293	361	291	194	291	277
16	296	301	352	323	350	246	155	324	289
17	290	268	291	276	252	199	141	275	245
18	208	210	204	196	206	175	136	205	191
19	150	143	164	175	193	168	134	165	161
20	93	118	97	109	128	116	86	109	107
21	67	71	85	100	95	93	82	84	85
22	56	36	41	42	63	66	50	48	51
23	28	24	29	30	60	66	28	34	38
TOTALS									
12 hour (0700-1900)	3266	3288	3329	3285	3524	3272	2087	3336	3149
am peak (0700-1000)	873	873	871	855	892	558	224	872	735
off peak (1000-1600)	1599	1636	1611	1635	1824	2094	1431	1660	1689
pm peak (1600-1900)	794	779	847	795	808	620	432	804	725
24 hour (0000-2400)	3806	3817	3870	3871	4197	3962	2649	3909	3740

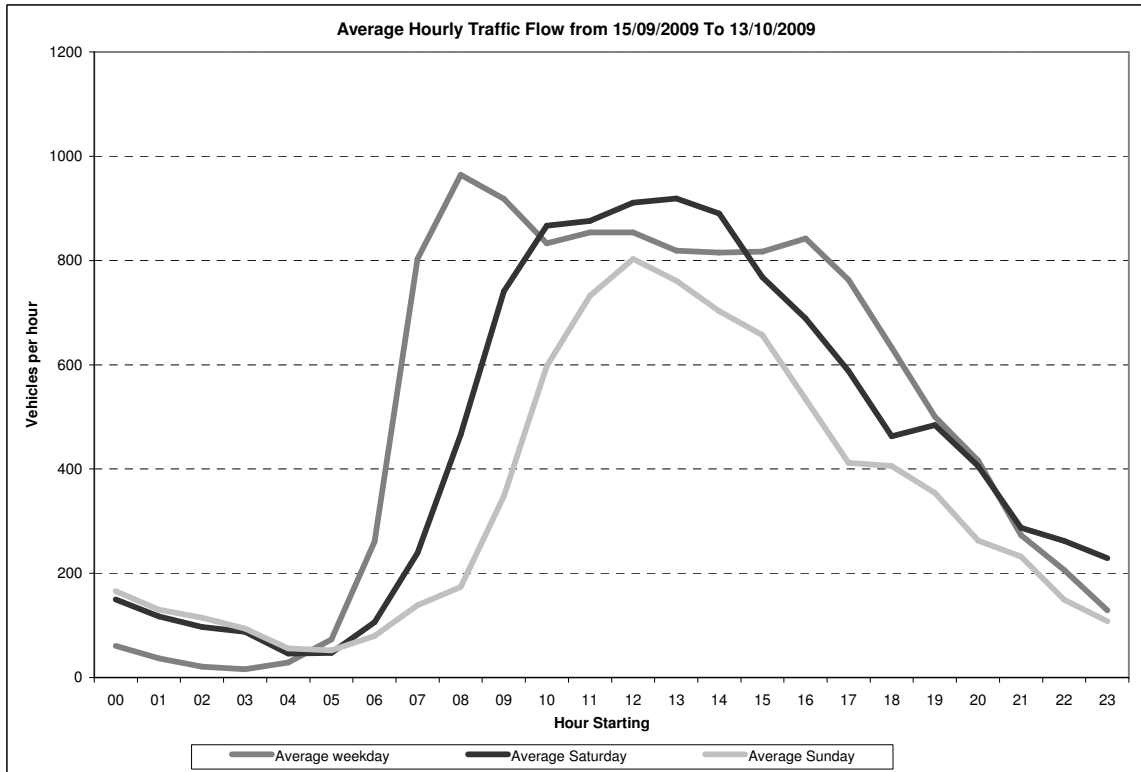


Greater Manchester Transportation Unit
Automatic Traffic Counter Data From 15/09/2009 To 13/10/2009
Site No: 00810431 A670 Penny Meadow Ashton-U-Lyne Tameside

West bound

Average vehicle flows (excluding School Holidays, Bank Holidays, roadworks etc)

Hour starting	Mon	Tues	Wed	Thurs	Fri	Sat	Sun	5-day	7-day
00	60	52	60	64	70	150	166	61	89
01	39	30	32	35	47	117	130	37	61
02	24	19	13	15	36	97	115	21	46
03	19	15	10	20	16	88	94	16	37
04	26	22	35	29	31	46	56	29	35
05	73	77	71	75	69	47	52	73	66
06	270	262	253	263	259	106	80	261	213
07	791	819	809	814	783	239	139	803	628
08	953	980	955	964	969	466	174	964	780
09	940	957	878	899	918	741	348	918	812
10	834	786	848	822	876	867	597	833	804
11	851	840	886	868	826	876	732	854	840
12	821	855	850	852	893	911	803	854	855
13	812	799	793	812	879	919	761	819	825
14	779	833	805	766	894	890	703	815	810
15	784	821	817	819	846	768	657	817	787
16	825	819	841	854	869	689	534	842	776
17	747	763	747	783	777	588	412	763	688
18	604	641	628	639	651	463	406	633	576
19	404	449	497	588	561	484	354	500	477
20	405	388	383	446	460	406	263	416	393
21	210	273	276	272	332	287	232	273	269
22	165	176	210	228	252	262	149	206	206
23	93	100	112	142	196	229	108	129	140
TOTALS									
12 hour (0700-1900)	9741	9913	9857	9892	10181	8417	6266	9915	9181
am peak (0700-1000)	2684	2756	2642	2677	2670	1446	661	2685	2220
off peak (1000-1600)	4881	4934	4999	4939	5214	5231	4253	4992	4921
pm peak (1600-1900)	2176	2223	2216	2276	2297	1740	1352	2238	2040
24 hour (0000-2400)	11529	11776	11809	12069	12510	10736	8065	11937	11213

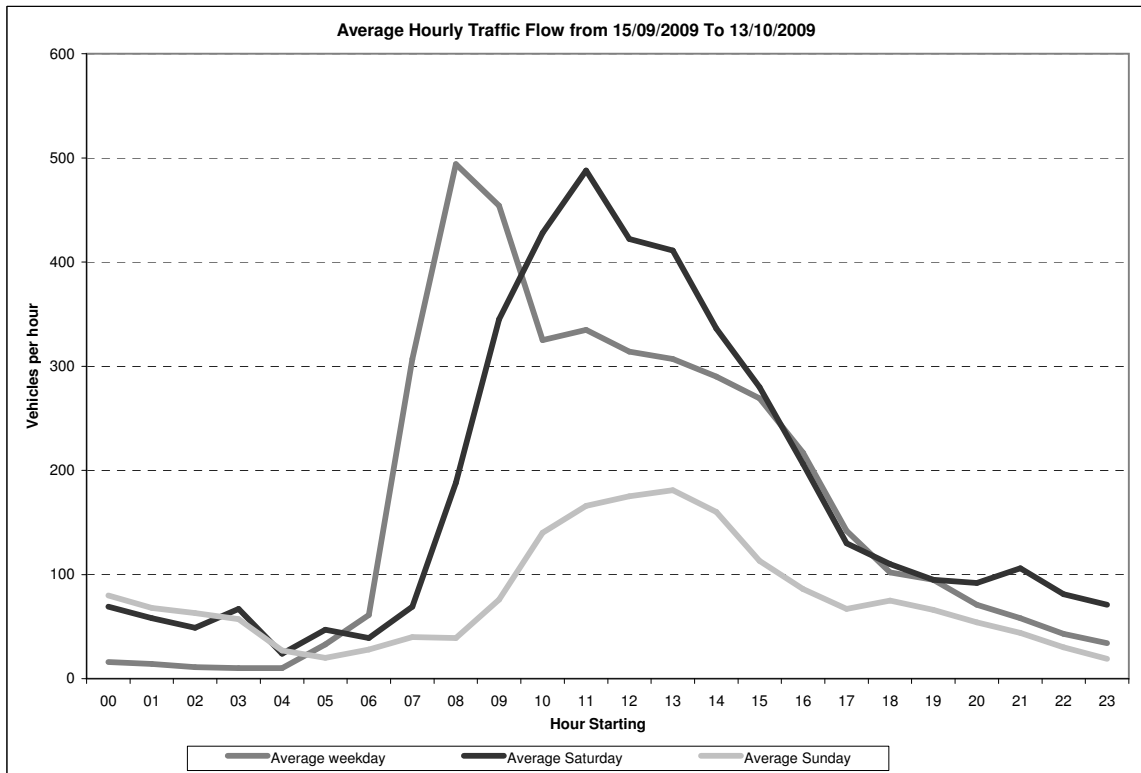


Greater Manchester Transportation Unit
Automatic Traffic Counter Data From 15/09/2009 To 13/10/2009
Site No: 00810441 Stamford Street Central Ashton-U-Lyne Tameside

West bound

Average vehicle flows (excluding School Holidays, Bank Holidays, roadworks etc)

Hour starting	Mon	Tues	Wed	Thurs	Fri	Sat	Sun	5-day	7-day
00	24	12	8	15	23	69	80	16	33
01	15	10	14	14	17	58	68	14	28
02	13	6	6	8	20	49	63	11	24
03	11	5	9	10	13	67	57	10	25
04	7	8	8	13	13	24	27	10	14
05	23	29	28	42	45	47	20	33	33
06	66	70	60	53	55	39	28	61	53
07	300	313	307	313	301	69	40	307	235
08	493	532	466	487	494	188	39	494	386
09	477	456	432	429	474	345	76	454	384
10	323	326	299	324	351	428	140	325	313
11	337	311	306	336	387	488	166	335	333
12	343	292	278	292	365	422	175	314	310
13	305	281	304	312	331	411	181	307	304
14	283	269	257	286	356	336	160	290	278
15	278	241	256	273	296	280	113	269	248
16	224	209	194	199	257	206	86	217	196
17	142	129	135	150	154	130	67	142	130
18	90	85	92	113	131	110	75	102	99
19	81	90	75	105	123	95	66	95	91
20	48	57	56	96	99	92	54	71	72
21	40	38	43	80	89	106	44	58	63
22	20	23	30	74	70	81	30	43	47
23	17	14	21	45	75	71	19	34	37
TOTALS									
12 hour (0700-1900)	3595	3444	3326	3514	3897	3413	1318	3556	3216
am peak (0700-1000)	1270	1301	1205	1229	1269	602	155	1255	1005
off peak (1000-1600)	1869	1720	1700	1823	2086	2365	935	1840	1786
pm peak (1600-1900)	456	423	421	462	542	446	228	461	425
24 hour (0000-2400)	3960	3806	3684	4069	4539	4211	1874	4012	3736



Greater Manchester Transportation Unit
Automatic Traffic Counter Data From 27/09/2009 To 06/10/2009
Site No: 00810460 Katherine Street Ashton-U-Lyne Tameside

Northeast bound

Average vehicle flows (excluding School Holidays, Bank Holidays, roadworks etc)

Hour starting	Mon	Tues	Wed	Thurs	Fri	Sat	Sun	5-day	7-day
00	22	12	21	23	33	40	31	22	26
01	10	10	9	13	13	40	42	11	20
02	4	5	5	3	6	23	17	5	9
03	4	3	3	1	3	19	24	3	8
04	9	5	4	6	5	16	21	6	9
05	39	33	40	42	37	14	11	38	31
06	110	102	116	115	105	42	21	110	87
07	329	341	316	347	334	72	42	333	254
08	392	409	391	394	384	100	65	394	305
09	311	297	298	331	319	209	116	311	269
10	249	265	279	289	273	298	171	271	261
11	282	301	302	266	345	337	265	299	300
12	322	321	339	335	364	389	277	336	335
13	341	365	358	330	383	418	291	355	355
14	295	329	340	332	395	363	274	338	333
15	358	353	355	338	400	354	232	361	341
16	444	417	420	433	457	309	197	434	382
17	406	412	460	424	400	257	137	420	357
18	255	235	272	277	262	165	129	260	228
19	140	168	148	150	141	112	108	149	138
20	118	116	126	136	107	102	86	121	113
21	80	100	90	132	132	70	84	107	98
22	53	53	50	70	77	66	62	61	62
23	25	29	40	40	41	61	33	35	38
TOTALS									
12 hour (0700-1900)	3984	4045	4130	4096	4316	3271	2196	4112	3720
am peak (0700-1000)	1032	1047	1005	1072	1037	381	223	1038	828
off peak (1000-1600)	1847	1934	1973	1890	2160	2159	1510	1960	1925
pm peak (1600-1900)	1105	1064	1152	1134	1119	731	463	1114	967
24 hour (0000-2400)	4598	4681	4782	4827	5016	3876	2736	4780	4359

