

LTP2 FACTSHEET



HIGHWAYS FORECASTING AND ANALYTICAL SERVICES

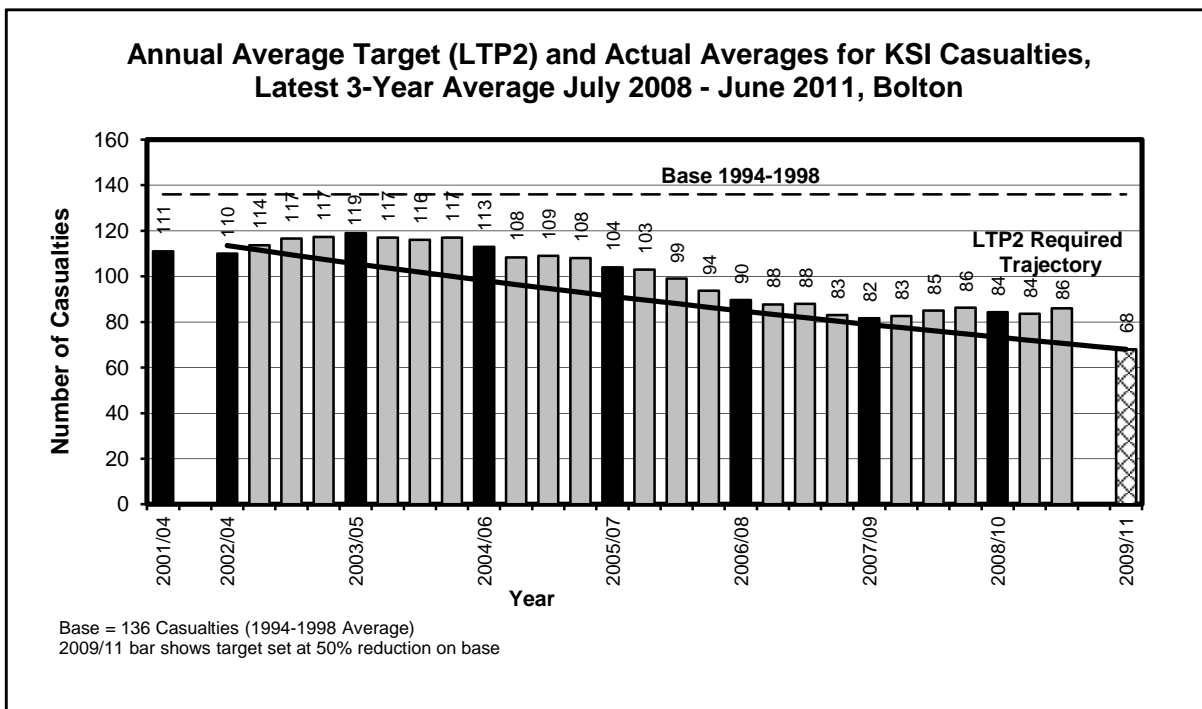
BOLTON KSI CASUALTY STATISTICS
July 2008 - June 2011

KSI Casualties: 50% casualty reduction on 1994-1998 baseline by 2010

Bolton KSI Casualties, Latest 3-Year Average, from July 08 to June 11

Annual Average Target (LTP2) and Actual Averages for KSI Casualties				
	Annual Average		Index	
	Trajectory	Actual	Trajectory	Actual
1994-1998 baseline		136		100
2001-2004: baseline		111		81
2003: average 2002/2003/2004	114	110	83	80
2004: average 2003/2004/2005	106	119	77	87
2005: average 2004/2005/2006	98	113	72	83
2006: average 2005/2006/2007	91	104	67	76
2007: average 2006/2007/2008	85	90	62	66
2008: average 2007/2008/2009	79	82	58	60
2009: average 2008/2009/2010	73	84	54	62
Average Apr 08-Mar 11	72	84	53	61
Average Jul 08-Jun 11	71	86	52	63
Target 2010: average 2009/2010/2011	68		50	

Note: The casualties for the target year will not be known until February/March 2012 (when the full 2011 data is available)



LTP2 FACTSHEET



HIGHWAYS FORECASTING AND ANALYTICAL SERVICES

BOLTON CHILD KSI CASUALTY STATISTICS
July 2008 - June 2011

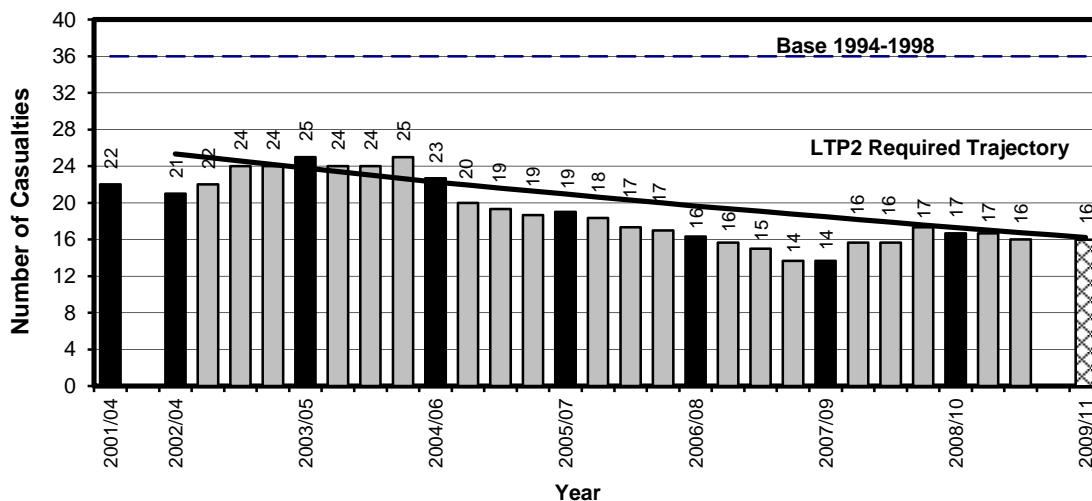
Child KSI Casualties: 55% casualty reduction on 1994-1998 baseline by 2010

Bolton Child KSI Casualties, Latest 3-Year Average, from July 08 to June 11

Year	Annual Average		Index	
	Trajectory	Actual	Trajectory	Actual
1994-1998 baseline		36		100
2001-2004: baseline		22		61
2003: average 2002/2003/2004	25	21	70	58
2004: average 2003/2004/2005	24	25	66	69
2005: average 2004/2005/2006	22	23	62	63
2006: average 2005/2006/2007	21	19	58	53
2007: average 2006/2007/2008	20	16	55	45
2008: average 2007/2008/2009	18	14	51	38
2009: average 2008/2009/2010	17	17	48	46
Average Apr 08-Mar 11	17	17	47	46
Average Jul 08-Jun 11	17	16	47	44
Target 2010: average 2009/2010/2011	16		45	

Note: The casualties for the target year will not be known until February/March 2012 (when the full 2011 data is available)

**Annual Average Target (LTP2) and Actual Averages for Child KSI Casualties,
Latest 3-Year Average July 2008 - June 2011, Bolton**



Base = 36 Casualties (1994-1998 Average)
2009/11 bar shows target set at 55% reduction on base

LTP2 FACTSHEET



HIGHWAYS FORECASTING AND ANALYTICAL SERVICES

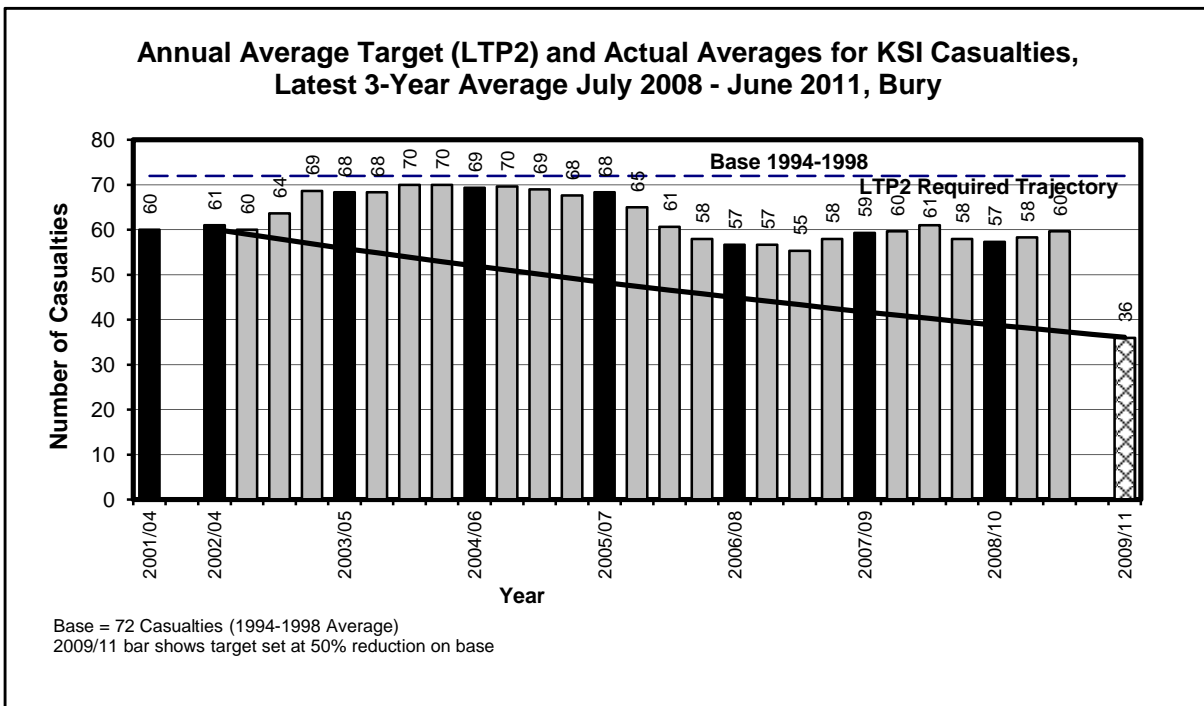
BURY KSI CASUALTY STATISTICS
July 2008 - June 2011

KSI Casualties: 50% casualty reduction on 1994-1998 baseline by 2010

Bury KSI Casualties, Latest 3-Year Average, from July 08 to June 11

Annual Average Target (LTP2) and Actual Averages for KSI Casualties				
Year	Annual Average		Index	
	Trajectory	Actual	Trajectory	Actual
1994-1998 baseline		72		100
2001-2004: baseline		60		82
2003: average 2002/2003/2004	60	61	83	84
2004: average 2003/2004/2005	56	68	77	95
2005: average 2004/2005/2006	52	69	72	96
2006: average 2005/2006/2007	48	68	67	95
2007: average 2006/2007/2008	45	57	62	78
2008: average 2007/2008/2009	42	59	58	82
2009: average 2008/2009/2010	39	57	54	79
<i>Average Apr 08-Mar 11</i>	38	58	53	81
<i>Average Jul 08-Jun 11</i>	37	60	52	83
Target 2010: average 2009/2010/2011	36		50	

Note: The casualties for the target year will not be known until February/March 2012 (when the full 2011 data is available)



LTP2 FACTSHEET



HIGHWAYS FORECASTING AND ANALYTICAL SERVICES

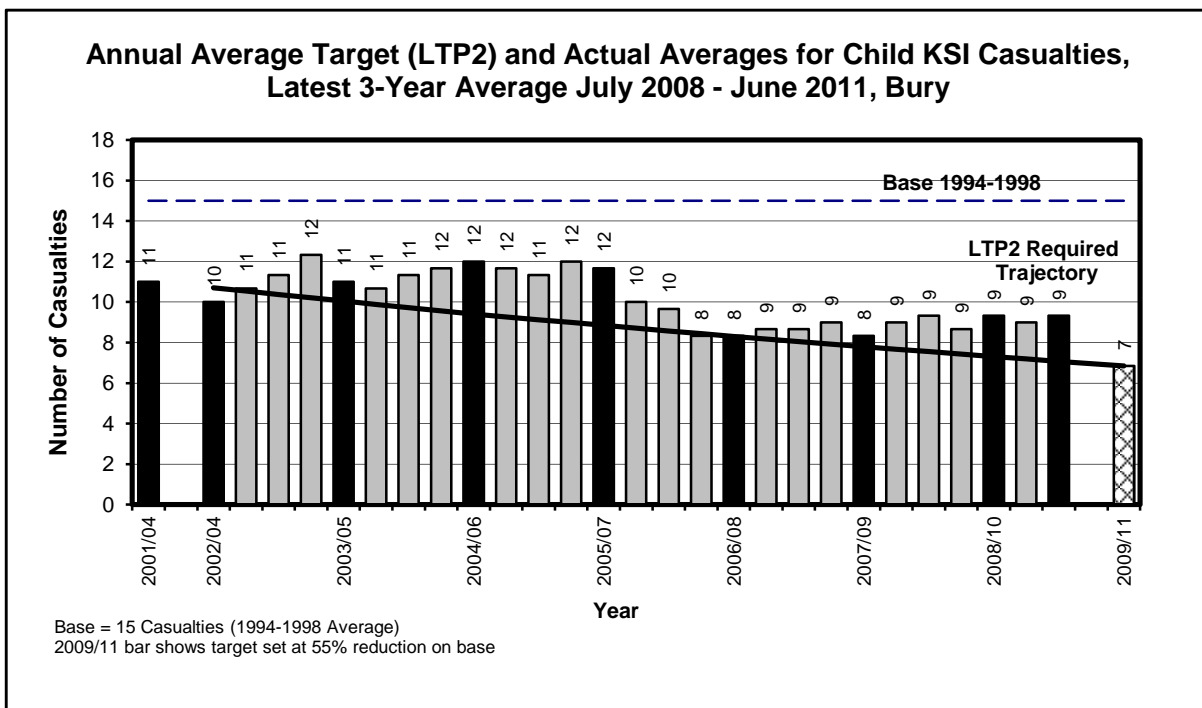
BURY CHILD KSI CASUALTY STATISTICS
July 2008 - June 2011

Child KSI Casualties: 55% casualty reduction on 1994-1998 baseline by 2010

Bury Child KSI Casualties, Latest 3-Year Average, from July 08 to June 11

Year	Annual Average		Index	
	Trajectory	Actual	Trajectory	Actual
1994-1998 baseline		15		100
2001-2004: baseline		11		74
2003: average 2002/2003/2004	11	10	70	66
2004: average 2003/2004/2005	10	11	66	70
2005: average 2004/2005/2006	9	12	62	79
2006: average 2005/2006/2007	9	12	58	77
2007: average 2006/2007/2008	8	8	55	55
2008: average 2007/2008/2009	8	8	51	55
2009: average 2008/2009/2010	7	9	48	61
<i>Average Apr 08-Mar 11</i>	7	9	47	59
<i>Average Jul 08-Jun 11</i>	7	9	47	61
Target 2010: average 2009/2010/2011	7		45	

Note: The casualties for the target year will not be known until February/March 2012 (when the full 2011 data is available)



LTP2 FACTSHEET



HIGHWAYS FORECASTING AND ANALYTICAL SERVICES

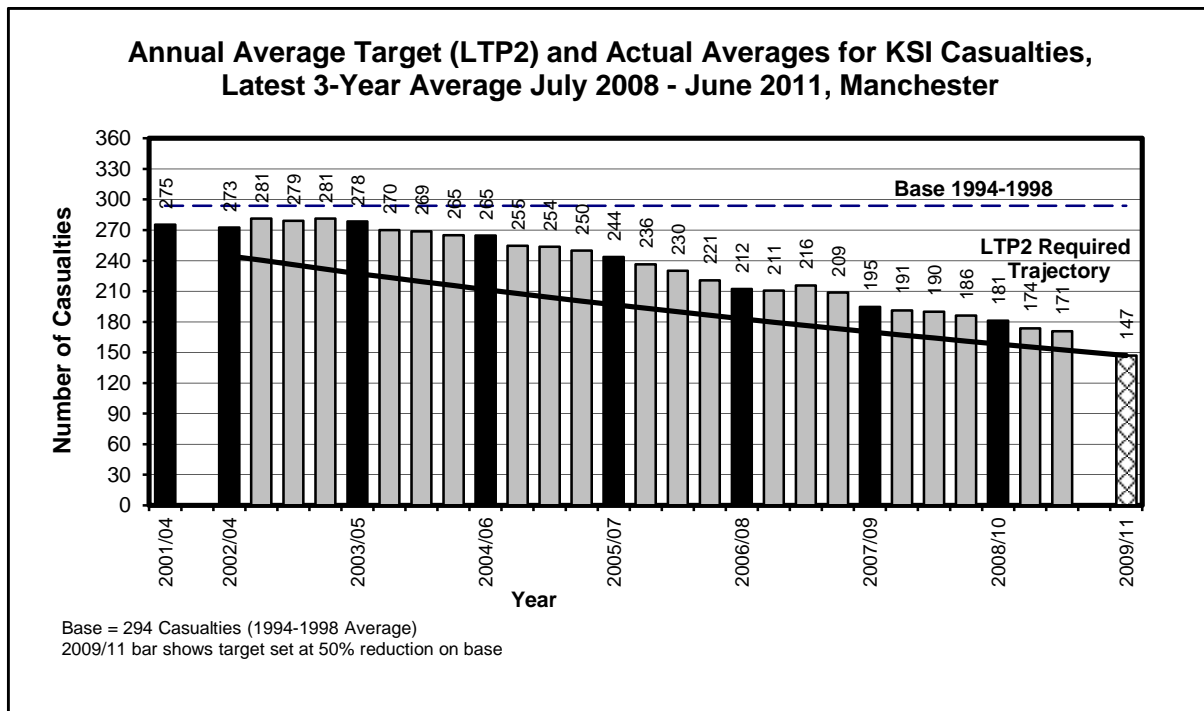
MANCHESTER KSI CASUALTY STATISTICS
July 2008 - June 2011

KSI Casualties: 50% casualty reduction on 1994-1998 baseline by 2010

Manchester KSI Casualties, Latest 3-Year Average, from July 08 to June 11

Annual Average Target (LTP2) and Actual Averages for KSI Casualties				
Year	Annual Average		Index	
	Trajectory	Actual	Trajectory	Actual
1994-1998 baseline		294		100
2001-2004: baseline		275		94
2003: average 2002/2003/2004	245	273	83	93
2004: average 2003/2004/2005	227	278	77	95
2005: average 2004/2005/2006	212	265	72	90
2006: average 2005/2006/2007	197	244	67	83
2007: average 2006/2007/2008	183	212	62	72
2008: average 2007/2008/2009	170	195	58	66
2009: average 2008/2009/2010	158	181	54	62
<i>Average Apr 08-Mar 11</i>	155	174	53	59
<i>Average Jul 08-Jun 11</i>	153	171	52	58
Target 2010: average 2009/2010/2011	147		50	

Note: The casualties for the target year will not be known until February/March 2012 (when the full 2011 data is available)



LTP2 FACTSHEET



HIGHWAYS FORECASTING AND ANALYTICAL SERVICES

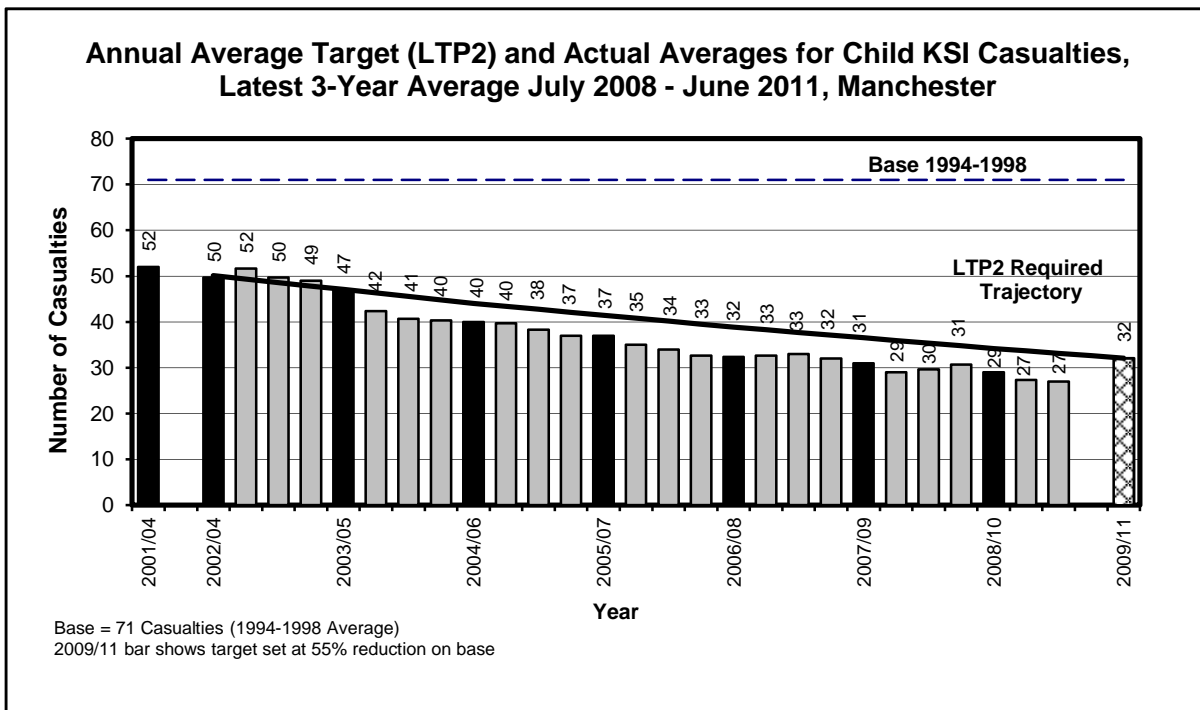
MANCHESTER CHILD KSI CASUALTY STATISTICS
July 2008 - June 2011

Child KSI Casualties: 55% casualty reduction on 1994-1998 baseline by 2010

Manchester Child KSI Casualties, Latest 3-Year Average, from July 08 to June 11

Annual Average Target (LTP2) and Actual Averages for Child KSI Casualties				
Year	Annual Average		Index	
	Trajectory	Actual	Trajectory	Actual
1994-1998 baseline		71		100
2001-2004: baseline		52		73
2003: average 2002/2003/2004	50	50	70	70
2004: average 2003/2004/2005	47	47	66	66
2005: average 2004/2005/2006	44	40	62	56
2006: average 2005/2006/2007	41	37	58	52
2007: average 2006/2007/2008	39	32	55	45
2008: average 2007/2008/2009	37	31	51	44
2009: average 2008/2009/2010	34	29	48	41
<i>Average Apr 08-Mar 11</i>	34	27	47	38
<i>Average Jul 08-Jun 11</i>	33	27	47	38
Target 2010: average 2009/2010/2011	32		45	

Note: The casualties for the target year will not be known until February/March 2012 (when the full 2011 data is available)



LTP2 FACTSHEET



HIGHWAYS FORECASTING AND ANALYTICAL SERVICES

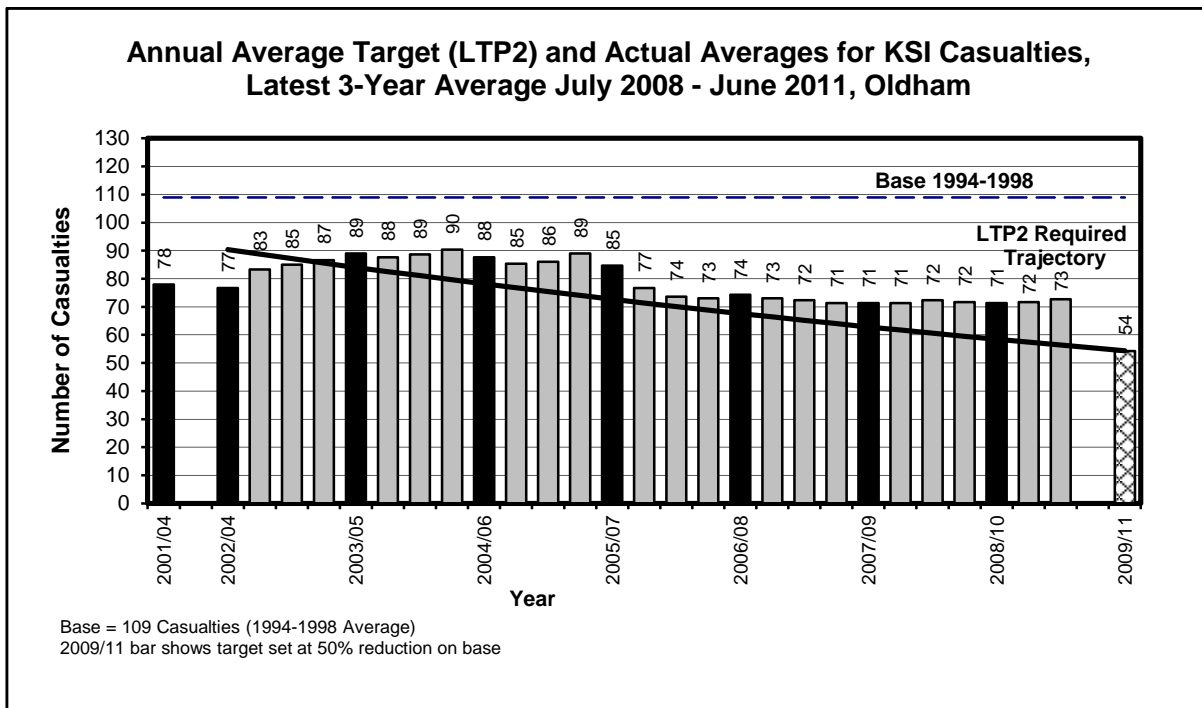
OLDHAM KSI CASUALTY STATISTICS
July 2008 - June 2011

KSI Casualties: 50% casualty reduction on 1994-1998 baseline by 2010

Oldham KSI Casualties, Latest 3-Year Average, from July 08 to June 11

Annual Average Target (LTP2) and Actual Averages for KSI Casualties				
Year	Annual Average		Index	
	Trajectory	Actual	Trajectory	Actual
1994-1998 baseline		109		100
2001-2004: baseline		78		72
2003: average 2002/2003/2004	90	77	83	71
2004: average 2003/2004/2005	84	89	77	82
2005: average 2004/2005/2006	78	88	72	81
2006: average 2005/2006/2007	73	85	67	78
2007: average 2006/2007/2008	68	74	62	68
2008: average 2007/2008/2009	63	71	58	66
2009: average 2008/2009/2010	58	71	54	66
Average Apr 08-Mar 11	57	72	53	66
Average Jul 08-Jun 11	56	73	52	67
Target 2010: average 2009/2010/2011	54		50	

Note: The casualties for the target year will not be known until February/March 2012 (when the full 2011 data is available)



LTP2 FACTSHEET



HIGHWAYS FORECASTING AND ANALYTICAL SERVICES

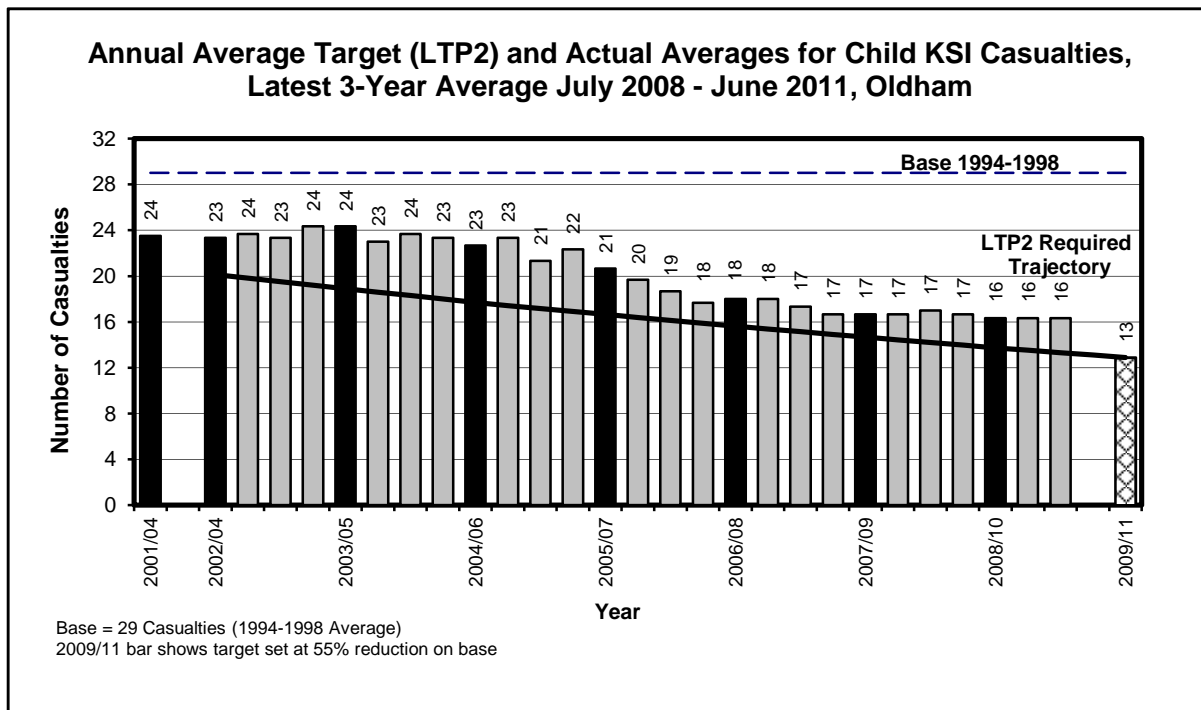
OLDHAM CHILD KSI CASUALTY STATISTICS
July 2008 - June 2011

Child KSI Casualties: 55% casualty reduction on 1994-1998 baseline by 2010

Oldham Child KSI Casualties, Latest 3-Year Average, from July 08 to June 11

Annual Average Target (LTP2) and Actual Averages for Child KSI Casualties				
Year	Annual Average		Index	
	Trajectory	Actual	Trajectory	Actual
1994-1998 baseline		29		100
2001-2004: baseline		24		82
2003: average 2002/2003/2004	20	23	70	82
2004: average 2003/2004/2005	19	24	66	85
2005: average 2004/2005/2006	18	23	62	79
2006: average 2005/2006/2007	17	21	58	72
2007: average 2006/2007/2008	16	18	55	63
2008: average 2007/2008/2009	15	17	51	58
2009: average 2008/2009/2010	14	16	48	57
<i>Average Apr 08-Mar 11</i>	14	16	47	57
<i>Average Jul 08-Jun 11</i>	13	16	47	57
Target 2010: average 2009/2010/2011	13		45	

Note: The casualties for the target year will not be known until February/March 2012 (when the full 2011 data is available)



LTP2 FACTSHEET



HIGHWAYS FORECASTING AND ANALYTICAL SERVICES

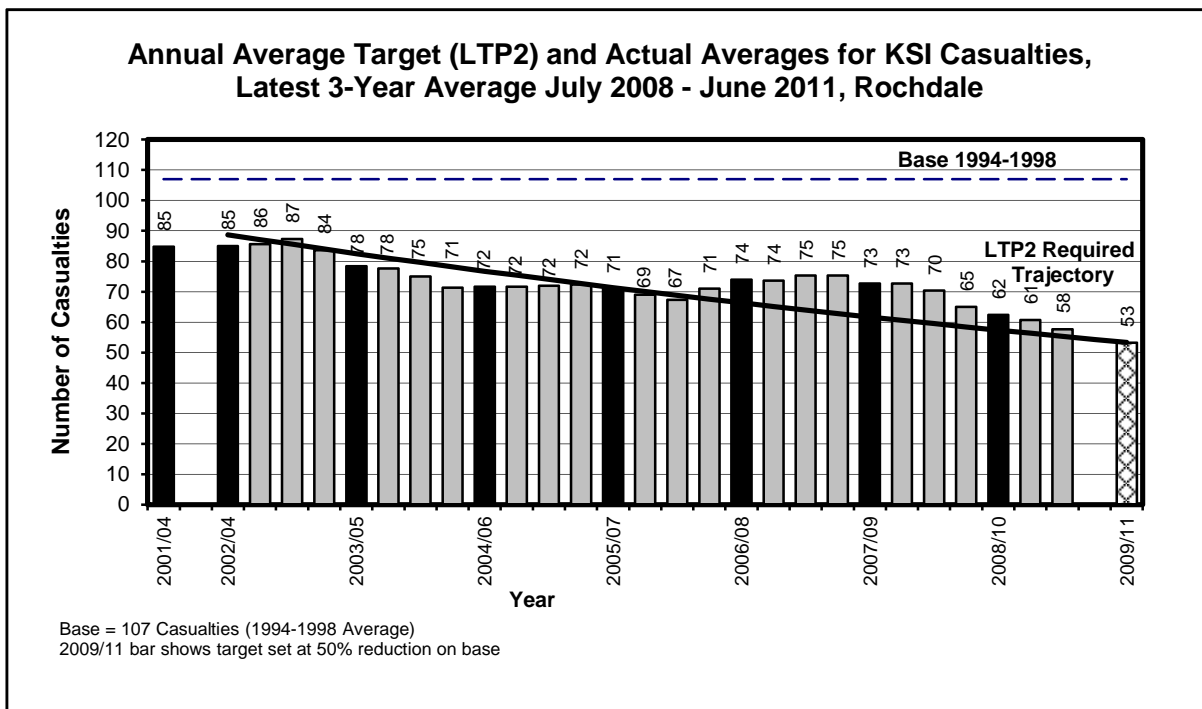
ROCHDALE KSI CASUALTY STATISTICS
July 2008 - June 2011

KSI Casualties: 50% casualty reduction on 1994-1998 baseline by 2010

Rochdale KSI Casualties, Latest 3-Year Average, from July 08 to June 11

Annual Average Target (LTP2) and Actual Averages for KSI Casualties				
Year	Annual Average		Index	
	Trajectory	Actual	Trajectory	Actual
1994-1998 baseline		107		100
2001-2004: baseline		85		80
2003: average 2002/2003/2004	89	85	83	80
2004: average 2003/2004/2005	82	78	77	73
2005: average 2004/2005/2006	77	72	72	67
2006: average 2005/2006/2007	71	71	67	67
2007: average 2006/2007/2008	66	74	62	69
2008: average 2007/2008/2009	62	73	58	68
2009: average 2008/2009/2010	57	62	54	58
Average Apr 08-Mar 11	56	61	53	57
Average Jul 08-Jun 11	55	58	52	54
Target 2010: average 2009/2010/2011	53		50	

Note: The casualties for the target year will not be known until February/March 2012 (when the full 2011 data is available)



LTP2 FACTSHEET



HIGHWAYS FORECASTING AND ANALYTICAL SERVICES

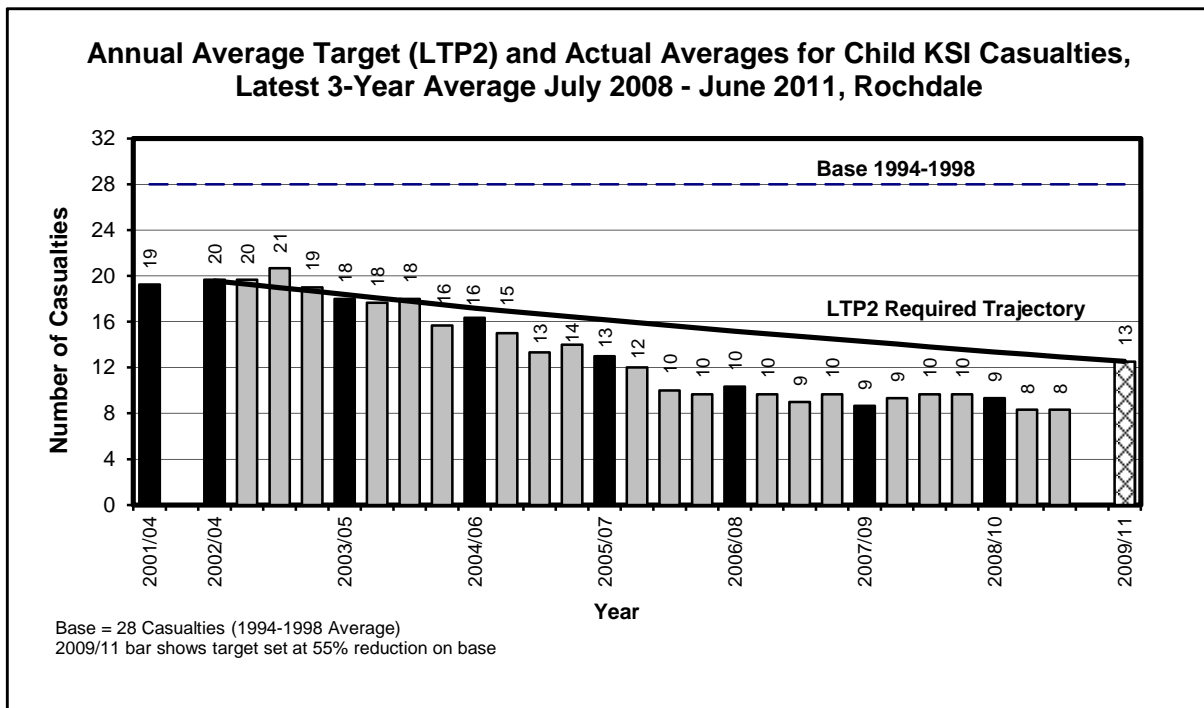
ROCHDALE CHILD KSI CASUALTY STATISTICS
July 2008 - June 2011

Child KSI Casualties: 55% casualty reduction on 1994-1998 baseline by 2010

Rochdale Child KSI Casualties, Latest 3-Year Average, from July 08 to June 11

Year	Annual Average		Index	
	Trajectory	Actual	Trajectory	Actual
1994-1998 baseline		28		100
2001-2004: baseline		19		69
2003: average 2002/2003/2004	20	20	70	71
2004: average 2003/2004/2005	18	18	66	65
2005: average 2004/2005/2006	17	16	62	59
2006: average 2005/2006/2007	16	13	58	47
2007: average 2006/2007/2008	15	10	55	37
2008: average 2007/2008/2009	14	9	51	31
2009: average 2008/2009/2010	13	9	48	34
<i>Average Apr 08-Mar 11</i>	13	8	47	30
<i>Average Jul 08-Jun 11</i>	13	8	47	30
Target 2010: average 2009/2010/2011	13		45	

Note: The casualties for the target year will not be known until February/March 2012 (when the full 2011 data is available)



LTP2 FACTSHEET



HIGHWAYS FORECASTING AND ANALYTICAL SERVICES

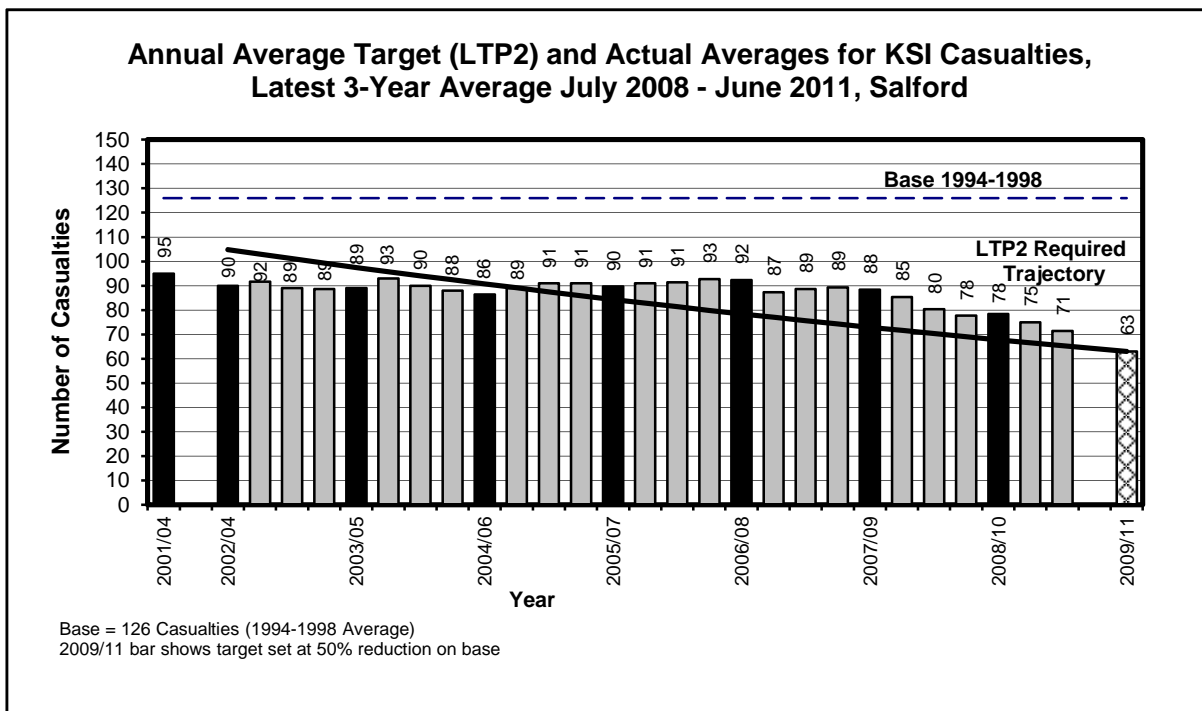
SALFORD KSI CASUALTY STATISTICS
July 2008 - June 2011

KSI Casualties: 50% casualty reduction on 1994-1998 baseline by 2010

Salford KSI Casualties, Latest 3-Year Average, from July 08 to June 11

Annual Average Target (LTP2) and Actual Averages for KSI Casualties				
Year	Annual Average		Index	
	Trajectory	Actual	Trajectory	Actual
1994-1998 baseline		126		100
2001-2004: baseline		95		75
2003: average 2002/2003/2004	105	90	83	71
2004: average 2003/2004/2005	97	89	77	71
2005: average 2004/2005/2006	91	86	72	69
2006: average 2005/2006/2007	84	90	67	71
2007: average 2006/2007/2008	78	92	62	73
2008: average 2007/2008/2009	73	88	58	70
2009: average 2008/2009/2010	68	78	54	62
<i>Average Apr 08-Mar 11</i>	67	75	53	60
<i>Average Jul 08-Jun 11</i>	65	71	52	57
Target 2010: average 2009/2010/2011	63		50	

Note: The casualties for the target year will not be known until February/March 2012 (when the full 2011 data is available)



LTP2 FACTSHEET



HIGHWAYS FORECASTING AND ANALYTICAL SERVICES

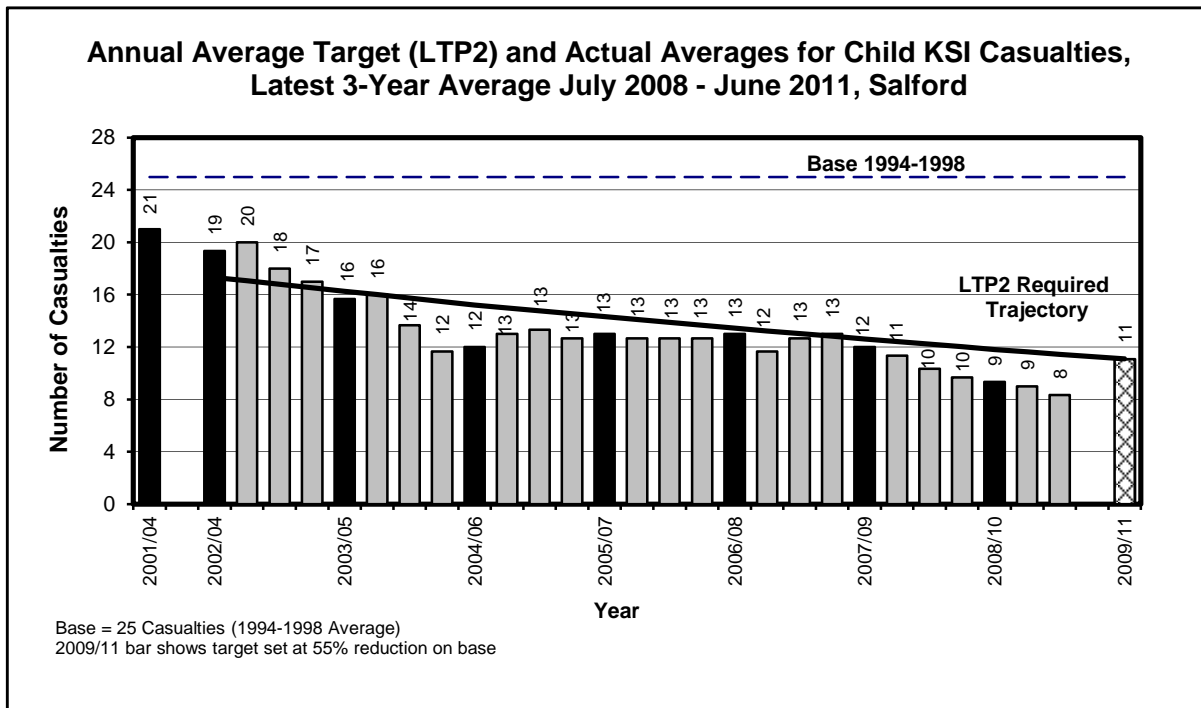
SALFORD CHILD KSI CASUALTY STATISTICS
July 2008 - June 2011

Child KSI Casualties: 55% casualty reduction on 1994-1998 baseline by 2010

Salford Child KSI Casualties, Latest 3-Year Average, from July 08 to June 11

Year	Annual Average		Index	
	Trajectory	Actual	Trajectory	Actual
1994-1998 baseline		25		100
2001-2004: baseline		21		85
2003: average 2002/2003/2004	17	19	70	79
2004: average 2003/2004/2005	16	16	66	64
2005: average 2004/2005/2006	15	12	62	49
2006: average 2005/2006/2007	14	13	58	53
2007: average 2006/2007/2008	13	13	55	53
2008: average 2007/2008/2009	13	12	51	49
2009: average 2008/2009/2010	12	9	48	38
<i>Average Apr 08-Mar 11</i>	12	9	47	37
<i>Average Jul 08-Jun 11</i>	11	8	47	34
Target 2010: average 2009/2010/2011	11		45	

Note: The casualties for the target year will not be known until February/March 2012 (when the full 2011 data is available)



LTP2 FACTSHEET



HIGHWAYS FORECASTING AND ANALYTICAL SERVICES

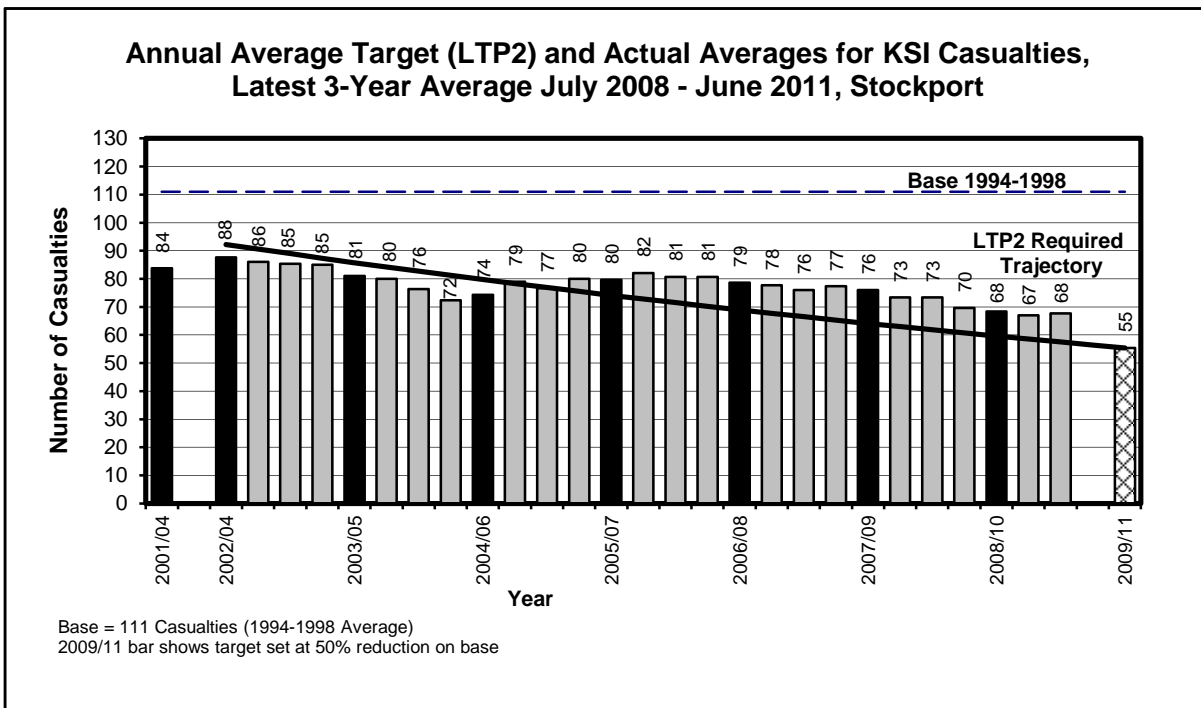
STOCKPORT KSI CASUALTY STATISTICS
July 2008 - June 2011

KSI Casualties: 50% casualty reduction on 1994-1998 baseline by 2010

Stockport KSI Casualties, Latest 3-Year Average, from July 08 to June 11

Annual Average Target (LTP2) and Actual Averages for KSI Casualties				
Year	Annual Average		Index	
	Trajectory	Actual	Trajectory	Actual
1994-1998 baseline		111		100
2001-2004: baseline		84		76
2003: average 2002/2003/2004	92	88	83	79
2004: average 2003/2004/2005	86	81	77	73
2005: average 2004/2005/2006	80	74	72	67
2006: average 2005/2006/2007	74	80	67	72
2007: average 2006/2007/2008	69	79	62	71
2008: average 2007/2008/2009	64	76	58	69
2009: average 2008/2009/2010	60	68	54	62
Average Apr 08-Mar 11	59	67	53	60
Average Jul 08-Jun 11	57	68	52	61
Target 2010: average 2009/2010/2011	55		50	

Note: The casualties for the target year will not be known until February/March 2012 (when the full 2011 data is available)



LTP2 FACTSHEET



HIGHWAYS FORECASTING AND ANALYTICAL SERVICES

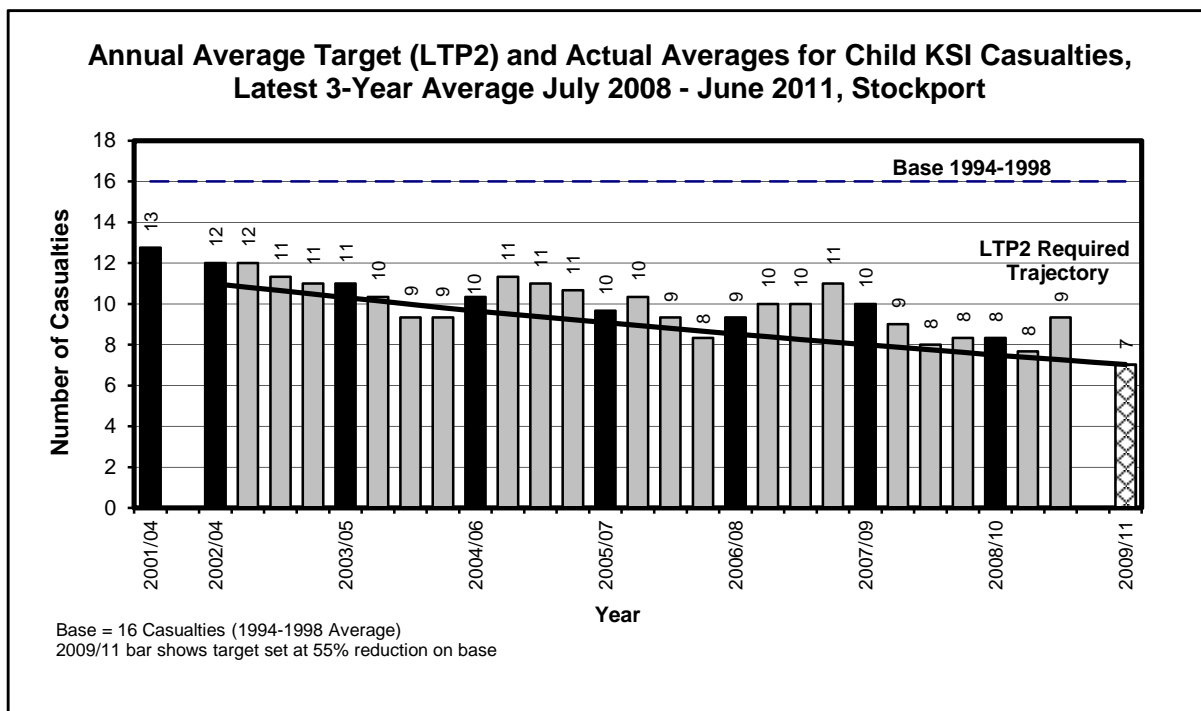
STOCKPORT CHILD KSI CASUALTY STATISTICS
July 2008 - June 2011

Child KSI Casualties: 55% casualty reduction on 1994-1998 baseline by 2010

Stockport Child KSI Casualties, Latest 3-Year Average, from July 08 to June 11

Year	Annual Average		Index	
	Trajectory	Actual	Trajectory	Actual
1994-1998 baseline		16		100
2001-2004: baseline		13		82
2003: average 2002/2003/2004	11	12	70	77
2004: average 2003/2004/2005	10	11	66	71
2005: average 2004/2005/2006	10	10	62	66
2006: average 2005/2006/2007	9	10	58	62
2007: average 2006/2007/2008	9	9	55	60
2008: average 2007/2008/2009	8	10	51	64
2009: average 2008/2009/2010	7	8	48	53
Average Apr 08-Mar 11	7	8	47	49
Average Jul 08-Jun 11	7	9	47	60
Target 2010: average 2009/2010/2011	7		45	

Note: The casualties for the target year will not be known until February/March 2012 (when the full 2011 data is available)



LTP2 FACTSHEET



HIGHWAYS FORECASTING AND ANALYTICAL SERVICES

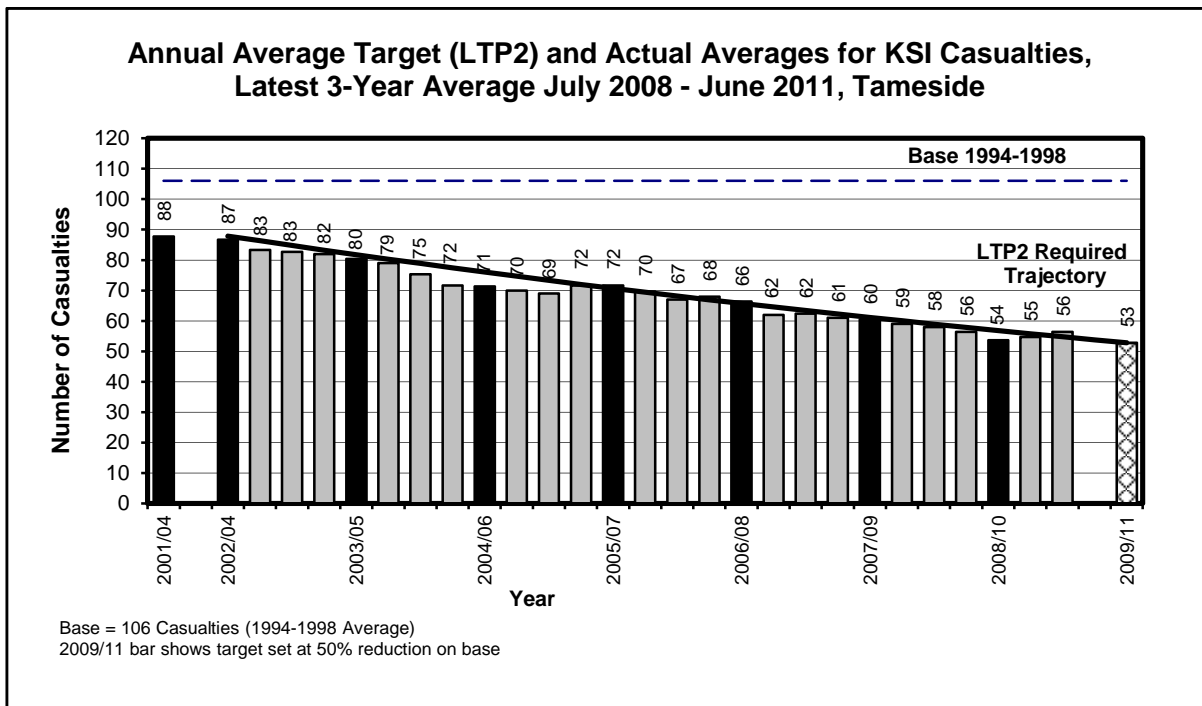
TAMESIDE KSI CASUALTY STATISTICS
July 2008 - June 2011

KSI Casualties: 50% casualty reduction on 1994-1998 baseline by 2010

Tameside KSI Casualties, Latest 3-Year Average, from July 08 to June 11

Annual Average Target (LTP2) and Actual Averages for KSI Casualties				
Year	Annual Average		Index	
	Trajectory	Actual	Trajectory	Actual
1994-1998 baseline		106		100
2001-2004: baseline		88		83
2003: average 2002/2003/2004	88	87	83	82
2004: average 2003/2004/2005	82	80	77	76
2005: average 2004/2005/2006	76	71	72	68
2006: average 2005/2006/2007	71	72	67	68
2007: average 2006/2007/2008	66	66	62	63
2008: average 2007/2008/2009	61	60	58	57
2009: average 2008/2009/2010	57	54	54	51
Average Apr 08-Mar 11	56	55	53	52
Average Jul 08-Jun 11	55	56	52	53
Target 2010: average 2009/2010/2011	53		50	

Note: The casualties for the target year will not be known until February/March 2012 (when the full 2011 data is available)



LTP2 FACTSHEET



HIGHWAYS FORECASTING AND ANALYTICAL SERVICES

TAMESIDE CHILD KSI CASUALTY STATISTICS
July 2008 - June 2011

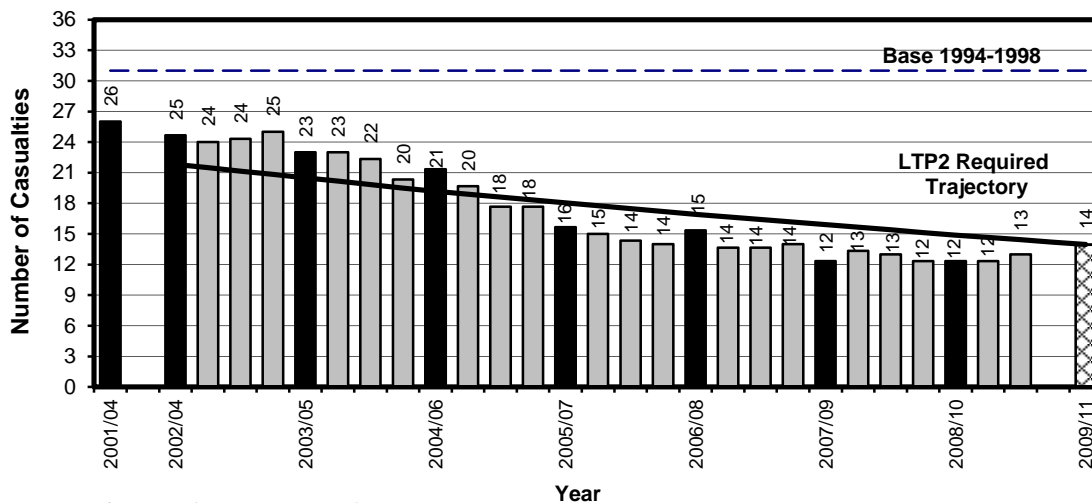
Child KSI Casualties: 55% casualty reduction on 1994-1998 baseline by 2010

Tameside Child KSI Casualties, Latest 3-Year Average, from July 08 to June 11

Year	Annual Average		Index	
	Trajectory	Actual	Trajectory	Actual
1994-1998 baseline		31		100
2001-2004: baseline		26		84
2003: average 2002/2003/2004	22	25	70	80
2004: average 2003/2004/2005	20	23	66	74
2005: average 2004/2005/2006	19	21	62	69
2006: average 2005/2006/2007	18	16	58	51
2007: average 2006/2007/2008	17	15	55	49
2008: average 2007/2008/2009	16	12	51	40
2009: average 2008/2009/2010	15	12	48	40
<i>Average Apr 08-Mar 11</i>	15	12	47	40
<i>Average Jul 08-Jun 11</i>	14	13	47	42
Target 2010: average 2009/2010/2011	14		45	

Note: The casualties for the target year will not be known until February/March 2012 (when the full 2011 data is available)

**Annual Average Target (LTP2) and Actual Averages for Child KSI Casualties,
Latest 3-Year Average July 2008 - June 2011, Tameside**



Base = 31 Casualties (1994-1998 Average)
2009/11 bar shows target set at 55% reduction on base

LTP2 FACTSHEET



HIGHWAYS FORECASTING AND ANALYTICAL SERVICES

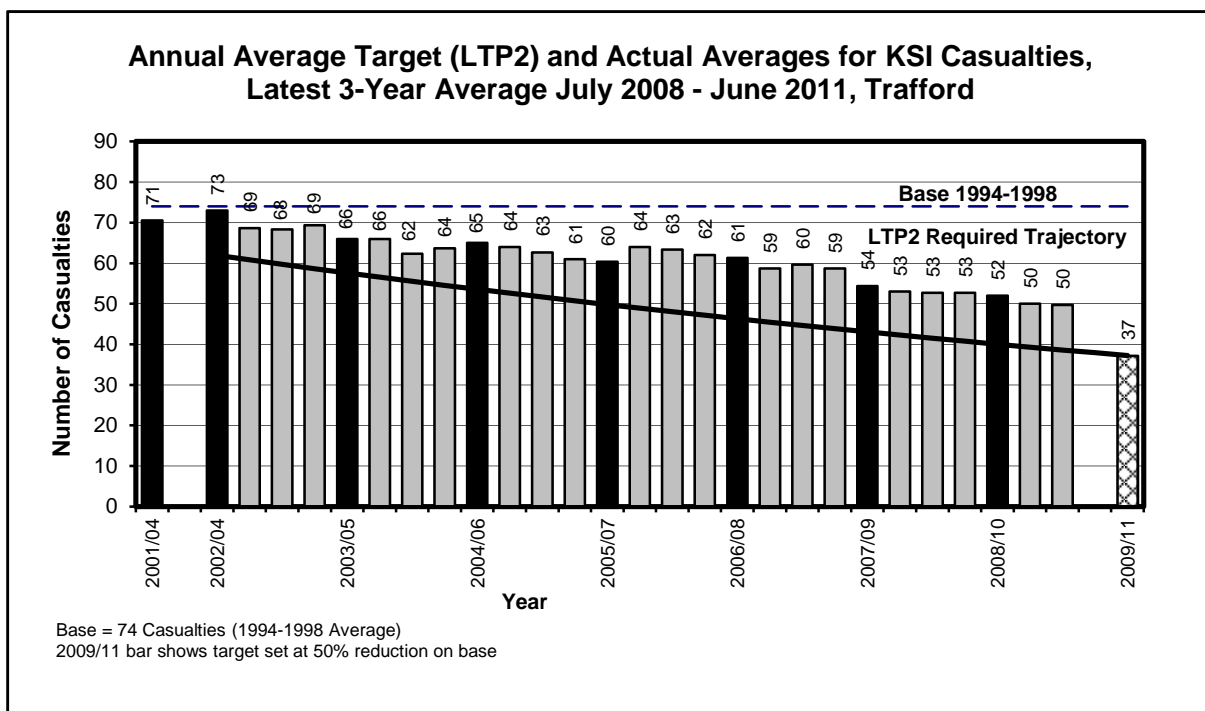
TRAFFORD KSI CASUALTY STATISTICS
July 2008 - June 2011

KSI Casualties: 50% casualty reduction on 1994-1998 baseline by 2010

Trafford KSI Casualties, Latest 3-Year Average, from July 08 to June 11

Annual Average Target (LTP2) and Actual Averages for KSI Casualties				
Year	Annual Average		Index	
	Trajectory	Actual	Trajectory	Actual
1994-1998 baseline		74		100
2001-2004: baseline		71		95
2003: average 2002/2003/2004	62	73	83	98
2004: average 2003/2004/2005	58	66	77	89
2005: average 2004/2005/2006	54	65	72	87
2006: average 2005/2006/2007	50	60	67	81
2007: average 2006/2007/2008	46	61	62	82
2008: average 2007/2008/2009	43	54	58	73
2009: average 2008/2009/2010	40	52	54	70
<i>Average Apr 08-Mar 11</i>	39	50	53	67
<i>Average Jul 08-Jun 11</i>	39	50	52	67
Target 2010: average 2009/2010/2011	37		50	

Note: The casualties for the target year will not be known until February/March 2012 (when the full 2011 data is available)



LTP2 FACTSHEET



HIGHWAYS FORECASTING AND ANALYTICAL SERVICES

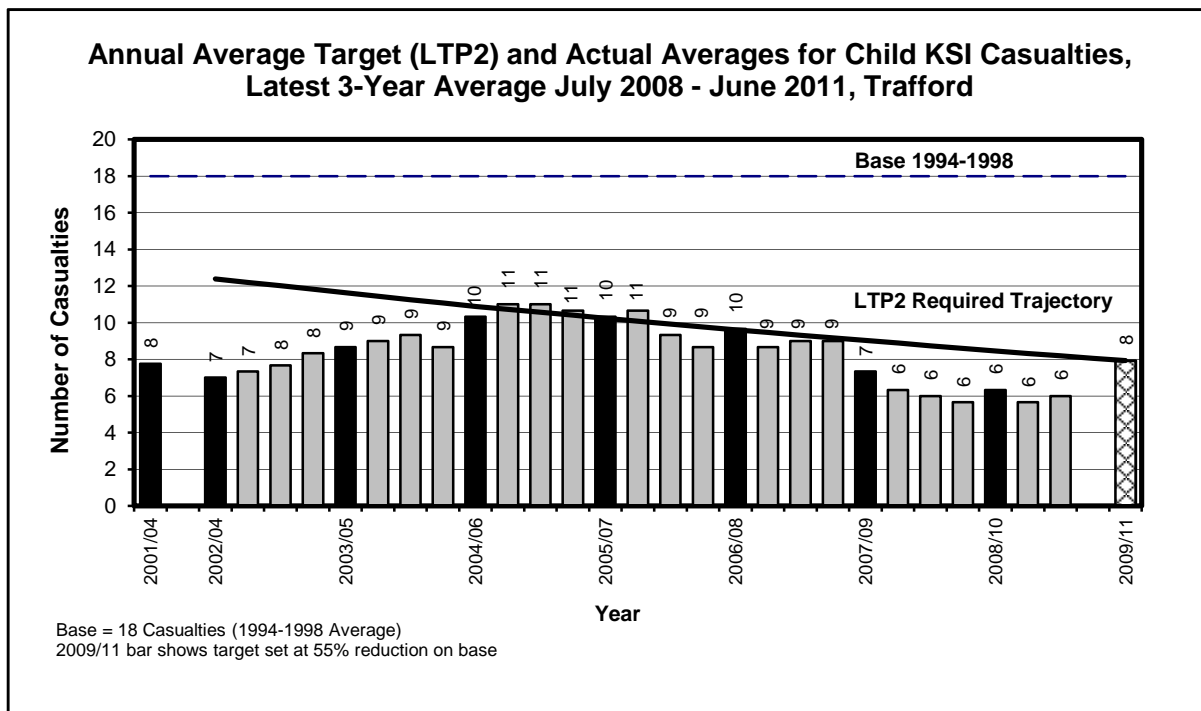
TRAFFORD CHILD KSI CASUALTY STATISTICS
July 2008 - June 2011

Child KSI Casualties: 55% casualty reduction on 1994-1998 baseline by 2010

Trafford Child KSI Casualties, Latest 3-Year Average, from July 08 to June 11

Year	Annual Average		Index	
	Trajectory	Actual	Trajectory	Actual
1994-1998 baseline		18		100
2001-2004: baseline		8		44
2003: average 2002/2003/2004	12	7	70	40
2004: average 2003/2004/2005	12	9	66	49
2005: average 2004/2005/2006	11	10	62	59
2006: average 2005/2006/2007	10	10	58	59
2007: average 2006/2007/2008	10	10	55	55
2008: average 2007/2008/2009	9	7	51	42
2009: average 2008/2009/2010	8	6	48	36
<i>Average Apr 08-Mar 11</i>	8	6	47	32
<i>Average Jul 08-Jun 11</i>	8	6	47	34
Target 2010: average 2009/2010/2011	8		45	

Note: The casualties for the target year will not be known until February/March 2012 (when the full 2011 data is available)



LTP2 FACTSHEET



HIGHWAYS FORECASTING AND ANALYTICAL SERVICES

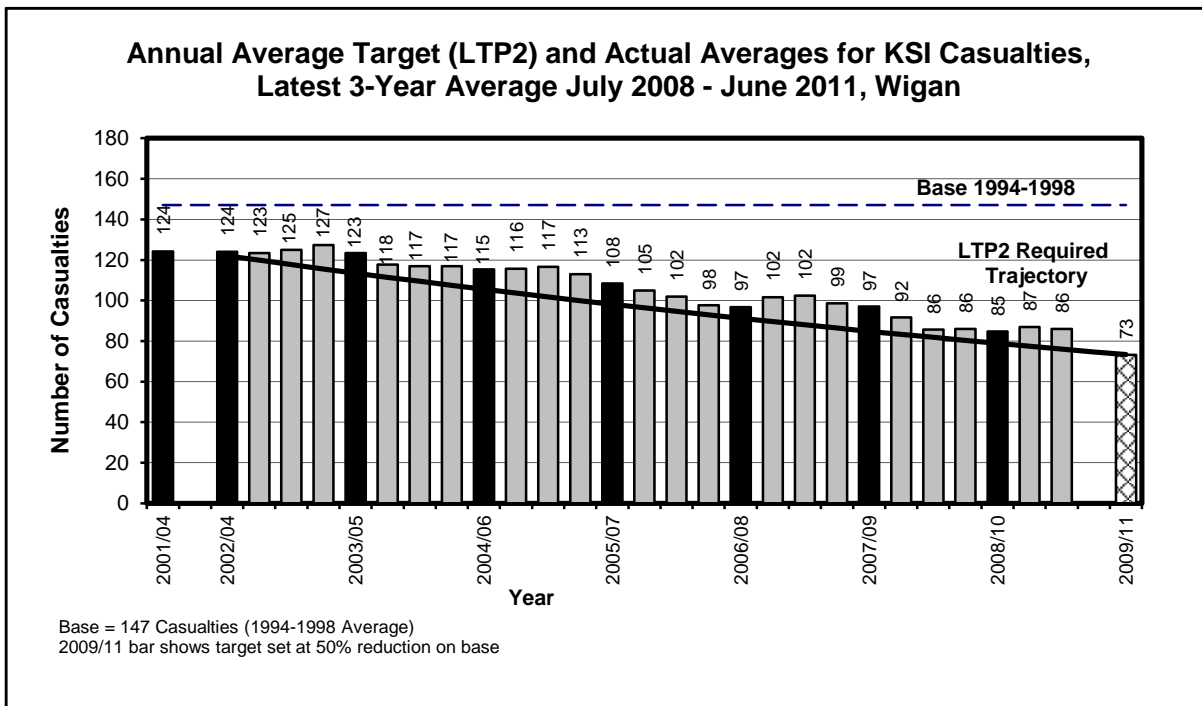
WIGAN KSI CASUALTY STATISTICS
July 2008 - June 2011

KSI Casualties: 50% casualty reduction on 1994-1998 baseline by 2010

Wigan KSI Casualties, Latest 3-Year Average, from July 08 to June 11

Annual Average Target (LTP2) and Actual Averages for KSI Casualties				
Year	Annual Average		Index	
	Trajectory	Actual	Trajectory	Actual
1994-1998 baseline		147		100
2001-2004: baseline		124		85
2003: average 2002/2003/2004	122	124	83	85
2004: average 2003/2004/2005	113	123	77	84
2005: average 2004/2005/2006	106	115	72	79
2006: average 2005/2006/2007	98	108	67	74
2007: average 2006/2007/2008	91	97	62	66
2008: average 2007/2008/2009	85	97	58	66
2009: average 2008/2009/2010	79	85	54	58
<i>Average Apr 08-Mar 11</i>	77	87	53	59
<i>Average Jul 08-Jun 11</i>	76	86	52	59
Target 2010: average 2009/2010/2011	73		50	

Note: The casualties for the target year will not be known until February/March 2012 (when the full 2011 data is available)



LTP2 FACTSHEET



HIGHWAYS FORECASTING AND ANALYTICAL SERVICES

WIGAN CHILD KSI CASUALTY STATISTICS
July 2008 - June 2011

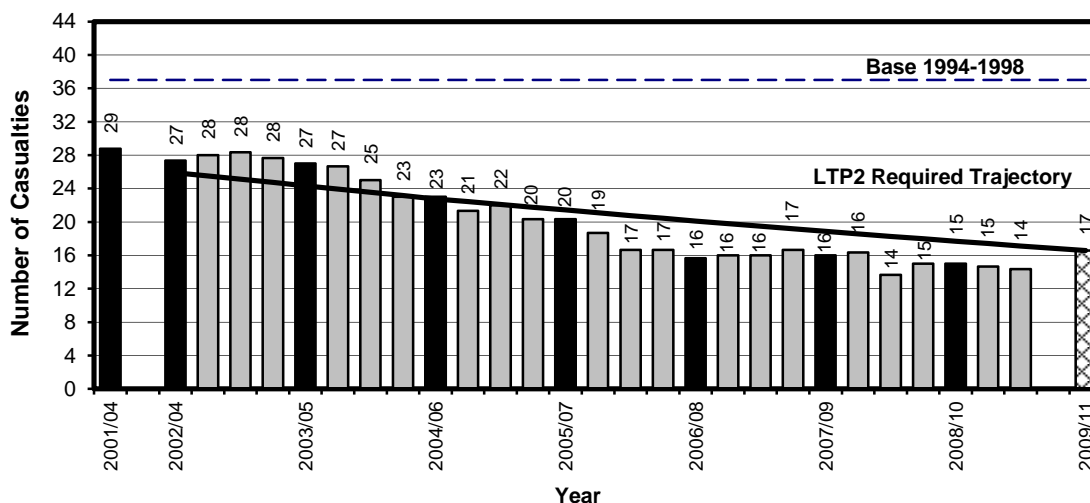
Child KSI Casualties: 55% casualty reduction on 1994-1998 baseline by 2010

Wigan Child KSI Casualties, Latest 3-Year Average, from July 08 to June 11

Year	Annual Average		Index	
	Trajectory	Actual	Trajectory	Actual
1994-1998 baseline		37		100
2001-2004: baseline		29		78
2003: average 2002/2003/2004	26	27	70	74
2004: average 2003/2004/2005	24	27	66	73
2005: average 2004/2005/2006	23	23	62	63
2006: average 2005/2006/2007	21	20	58	55
2007: average 2006/2007/2008	20	16	55	43
2008: average 2007/2008/2009	19	16	51	43
2009: average 2008/2009/2010	18	15	48	41
Average Apr 08-Mar 11	17	15	47	40
Average Jul 08-Jun 11	17	14	47	39
Target 2010: average 2009/2010/2011	17		45	

Note: The casualties for the target year will not be known until February/March 2012 (when the full 2011 data is available)

**Annual Average Target (LTP2) and Actual Averages for Child KSI Casualties,
Latest 3-Year Average July 2008 - June 2011, Wigan**



Base = 37 Casualties (1994-1998 Average)
2009/11 bar shows target set at 55% reduction on base