

# VISION 2020 FACTSHEET



THE SURVEYS, RESEARCH & ANALYSIS DEPARTMENT

## GREATER MANCHESTER KSI CASUALTY STATISTICS

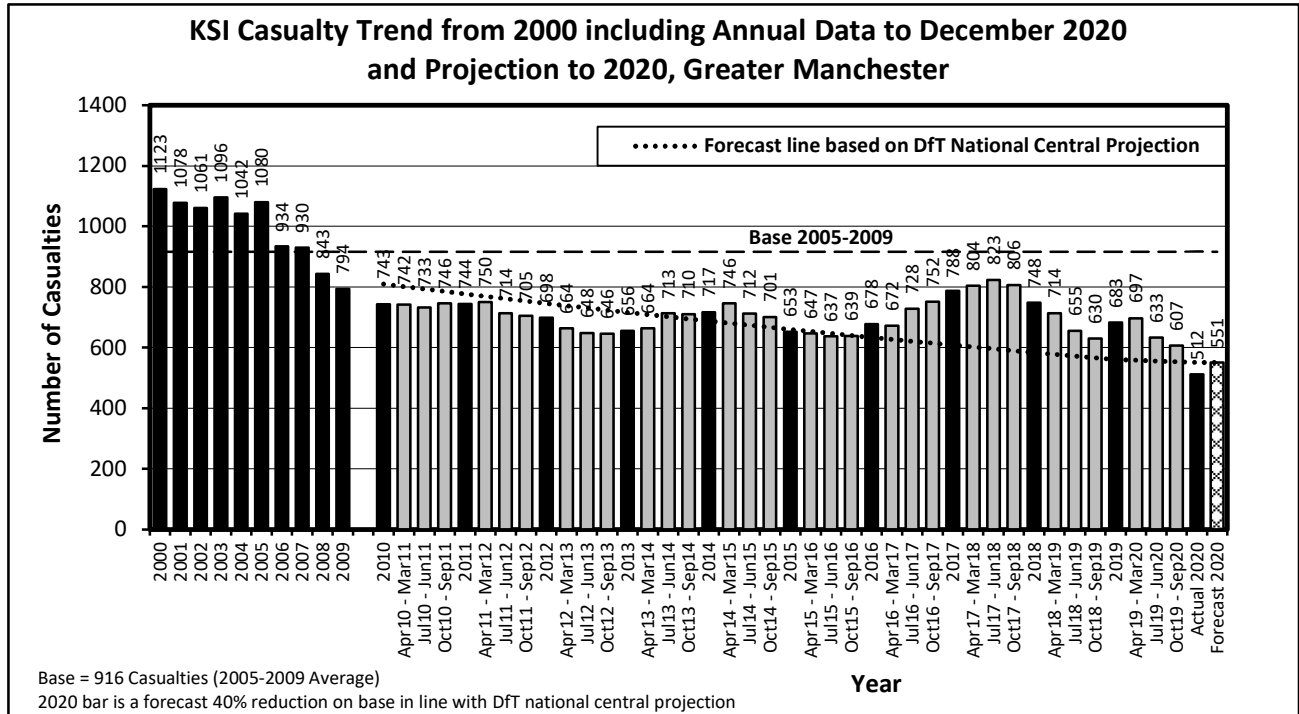
Latest 12 Months Data January 2020 to December 2020

### KSI Casualties: Casualty Trend 2000 - December 2020 and Projection to 2020

The table shows Greater Manchester KSI casualties from 2000 - December 2020 and forecast casualty reductions based on the DfT National Central Projection as outlined in the Strategic Framework for Road Safety

KSI Casualty Trend 2000 - December 2020 and Projection to 2020				
Year	KSI Casualty Totals		Index	
	Actual	Projection	Actual	Projection
2000	1123			
2001	1078			
2002	1061			
2003	1096			
2004	1042			
2005	1080			
2006	934			
2007	930			
2008	843			
2009	794			
2005-2009 Baseline	916		100	
2010	743	810	81	88
2011	744	777	81	85
2012	698	746	76	81
2013	656	716	72	78
2014	717	687	78	75
2015	653	660	71	72
2016	678	634	74	69
2017	788	608	86	66
2018	748	584	82	64
2019	683	560	75	61
2020	512	551	56	60

Note: Index is based on 2005-2009 average



Greater Manchester Casualty Statistics, December 2020

<b>Progress Towards KSI Casualty Reduction Forecast by District</b>			
<b>District</b>	<b>KSI</b>		
	<b>Base</b>	<b>Jan 20 to Dec 20</b>	<b>Vision 2020</b>
Bolton	94	51	57
Bury	64	31	38
Manchester	222	110	133
Oldham	78	49	47
Rochdale	71	40	42
Salford	86	51	52
Stockport	77	47	47
Tameside	64	42	38
Trafford	57	33	35
Wigan	103	58	62
<b>Greater Manchester</b>	<b>916</b>	<b>512</b>	<b>551</b>

<b>Index of Progress Towards KSI Casualty Reduction Forecast by District</b>				
<b>District</b>	<b>KSI</b>			
	<b>Base</b>	<b>Jan 20 to Dec 20</b>	<b>Vision 2020</b>	<b>% Reduction Needed</b>
Bolton	100	54	60	<b>Achieved</b>
Bury	100	49	60	<b>Achieved</b>
Manchester	100	50	60	<b>Achieved</b>
Oldham	100	63	60	3.0
Rochdale	100	57	60	<b>Achieved</b>
Salford	100	59	60	<b>Achieved</b>
Stockport	100	61	60	0.7
Tameside	100	66	60	6.0
Trafford	100	57	60	<b>Achieved</b>
Wigan	100	56	60	<b>Achieved</b>
<b>Greater Manchester</b>	<b>100</b>	<b>56</b>	<b>60</b>	<b>Achieved</b>

Notes: Base = Average 2005-2009 = 100

Since lockdown measures began on Monday 23rd March 2020, traffic flows on the Highways in Greater Manchester have been affected which in turn would have an impact on the number of reported injury collisions.