

# VISION 2020 FACTSHEET



THE SURVEYS, RESEARCH & ANALYSIS DEPARTMENT

## GREATER MANCHESTER KSI CASUALTY STATISTICS

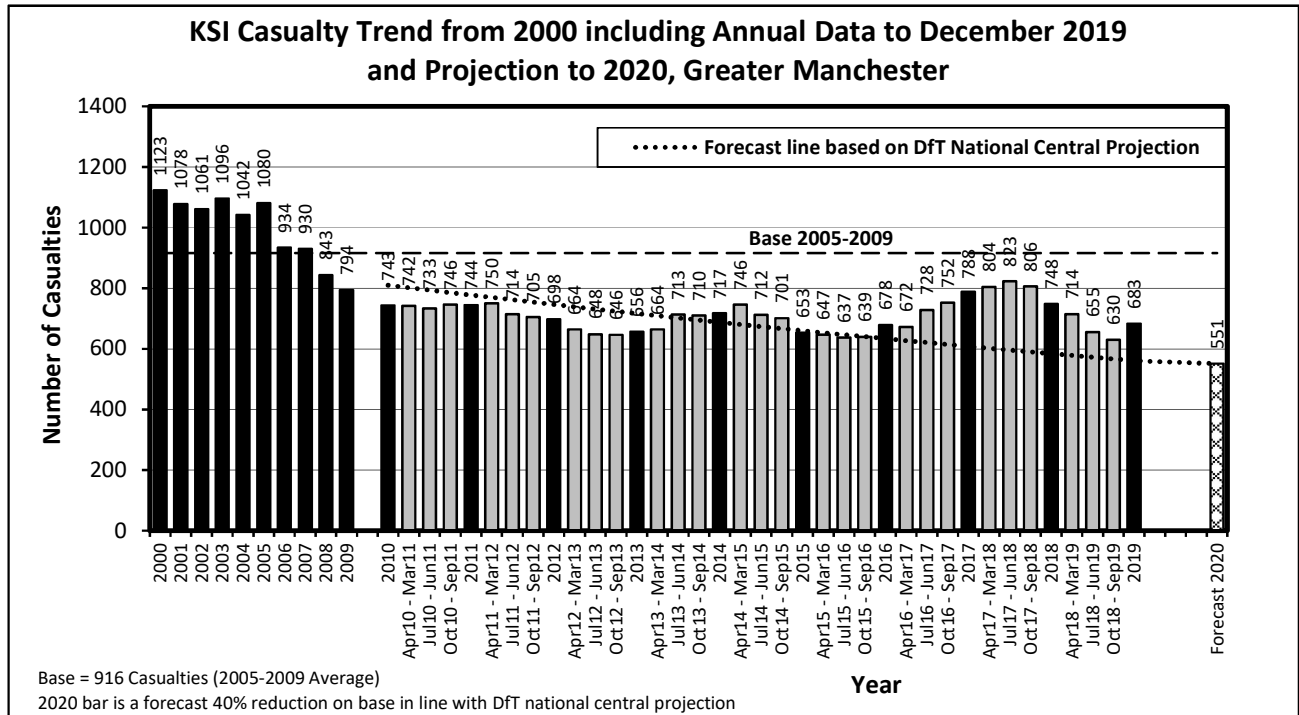
Latest 12 Months Data January 2019 to December 2019

### KSI Casualties: Casualty Trend 2000 - December 2019 and Projection to 2020

The table shows Greater Manchester KSI casualties from 2000 - December 2019 and forecast casualty reductions based on the DfT National Central Projection as outlined in the Strategic Framework for Road Safety

KSI Casualty Trend 2000 - December 2019 and Projection to 2020				
Year	KSI Casualty Totals		Index	
	Actual	Projection	Actual	Projection
2000	1123			
2001	1078			
2002	1061			
2003	1096			
2004	1042			
2005	1080			
2006	934			
2007	930			
2008	843			
2009	794			
2005-2009 Baseline	916		100	
2010	743	810	81	88
2011	744	777	81	85
2012	698	746	76	81
2013	656	716	72	78
2014	717	687	78	75
2015	653	660	71	72
2016	678	634	74	69
2017	788	608	86	66
2018	748	584	82	64
2019	683	560	75	61
2020		551		60

Note: Index is based on 2005-2009 average



<b>Progress Towards KSI Casualty Reduction Forecast by District</b>			
<b>District</b>	<b>KSI</b>		
	<b>Base</b>	<b>Jan 19 to Dec 19</b>	<b>Vision 2020</b>
Bolton	94	77	57
Bury	64	39	38
Manchester	222	137	133
Oldham	78	69	47
Rochdale	71	64	42
Salford	86	68	52
Stockport	77	40	47
Tameside	64	42	38
Trafford	57	57	35
Wigan	103	90	62
<b>Greater Manchester</b>	<b>916</b>	<b>683</b>	<b>551</b>

<b>Index of Progress Towards KSI Casualty Reduction Forecast by District</b>			
<b>District</b>	<b>KSI</b>		
	<b>Base</b>	<b>Jan 19 to Dec 19</b>	<b>Vision 2020</b>
Bolton	100	82	60
Bury	100	61	60
Manchester	100	62	60
Oldham	100	89	60
Rochdale	100	91	60
Salford	100	79	60
Stockport	100	52	60
Tameside	100	66	60
Trafford	100	99	60
Wigan	100	87	60
<b>Greater Manchester</b>	<b>100</b>	<b>75</b>	<b>60</b>

Note: Base = Average 2005-2009 = 100