

VISION 2020 FACTSHEET



THE SURVEYS, RESEARCH & ANALYSIS DEPARTMENT

GREATER MANCHESTER KSI CASUALTY STATISTICS

Latest 12 Months Data October 2019 to September 2020

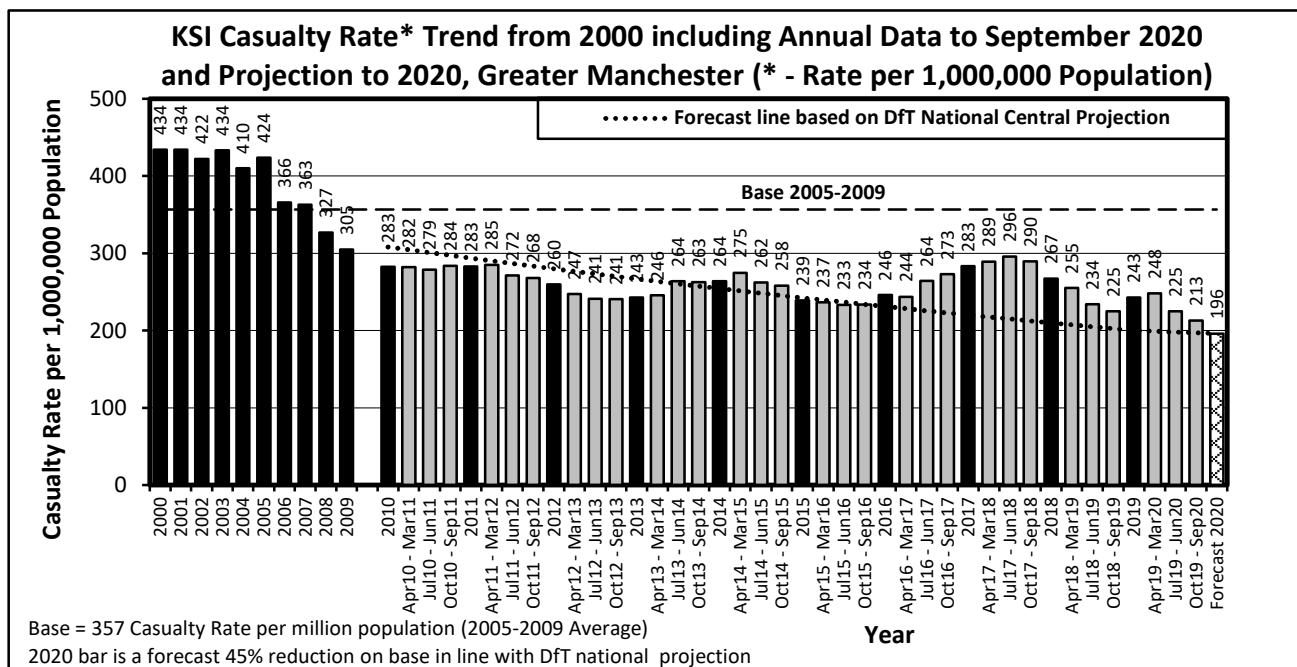
KSI Casualty Rates: Casualty Rate Trend 2000 - September 2020 and Projection to 2020

The table shows Greater Manchester KSI casualty rates* from 2000 - September 2020 and forecast casualty reductions based on the DfT National Central Projection as outlined in the Strategic Framework for Road Safety. (*based on ONS population projections).

KSI Casualty Rate Trend 2000 - September 2020 and Projection to 2020				
Year	KSI Casualty Rates**		Index	
	Actual	Projection	Actual	Projection
2000	434			
2001	434			
2002	422			
2003	434			
2004	410			
2005	424			
2006	366			
2007	363			
2008	327			
2009	305			
2005-2009 Baseline	357		100	
2010	283	308	79	86
2011	283	294	79	82
2012	260	280	73	78
2013	243	267	68	75
2014	264	254	74	71
2015	239	242	67	68
2016	246	231	69	65
2017	283	220	79	62
2018	267	210	75	59
2019	243	200	68	56
Apr 2019-Mar 2020	248	199	70	56
Jul 2019-Jun 2020	225	198	63	56
Oct 2019-Sep 2020	213	197	60	55
2020		196		55

Notes: ** - KSI rates per 1,000,000 population

Index is based on 2005-2009 average



Progress Towards KSI Casualty Rate* Reduction Forecast by District			
KSI Casualty Rates* (Progress Towards KPI 11)			
District	Base	Oct 19 to Sep 20**	Vision 2020
Bolton	357	224	196
Bury	349	205	192
Manchester	480	210	264
Oldham	355	238	195
Rochdale	343	232	189
Salford	392	244	216
Stockport	275	165	151
Tameside	296	160	163
Trafford	269	195	148
Wigan	338	251	186
Greater Manchester	357	213	196

Index of Progress Towards KSI Casualty Rate* Reduction Forecast by District			
KSI Casualty Rates* (Progress Towards KPI 11)			
District	Base	Oct 19 to Sep 20**	Vision 2020
Bolton	100	63	55
Bury	100	59	55
Manchester	100	44	55
Oldham	100	67	55
Rochdale	100	68	55
Salford	100	62	55
Stockport	100	60	55
Tameside	100	54	55
Trafford	100	72	55
Wigan	100	74	55
Greater Manchester	100	60	55

Notes: Base = Average 2005-2009 = 100

* - KSI rates per 1,000,000 resident population

** - Uses figures provided by ONS for the mid-year estimate of population for 2018