

# VISION 2020 FACTSHEET



THE SURVEYS, RESEARCH & ANALYSIS DEPARTMENT

GREATER MANCHESTER KSI CASUALTY STATISTICS

Latest 12 Months Data April 2019 to March 2020

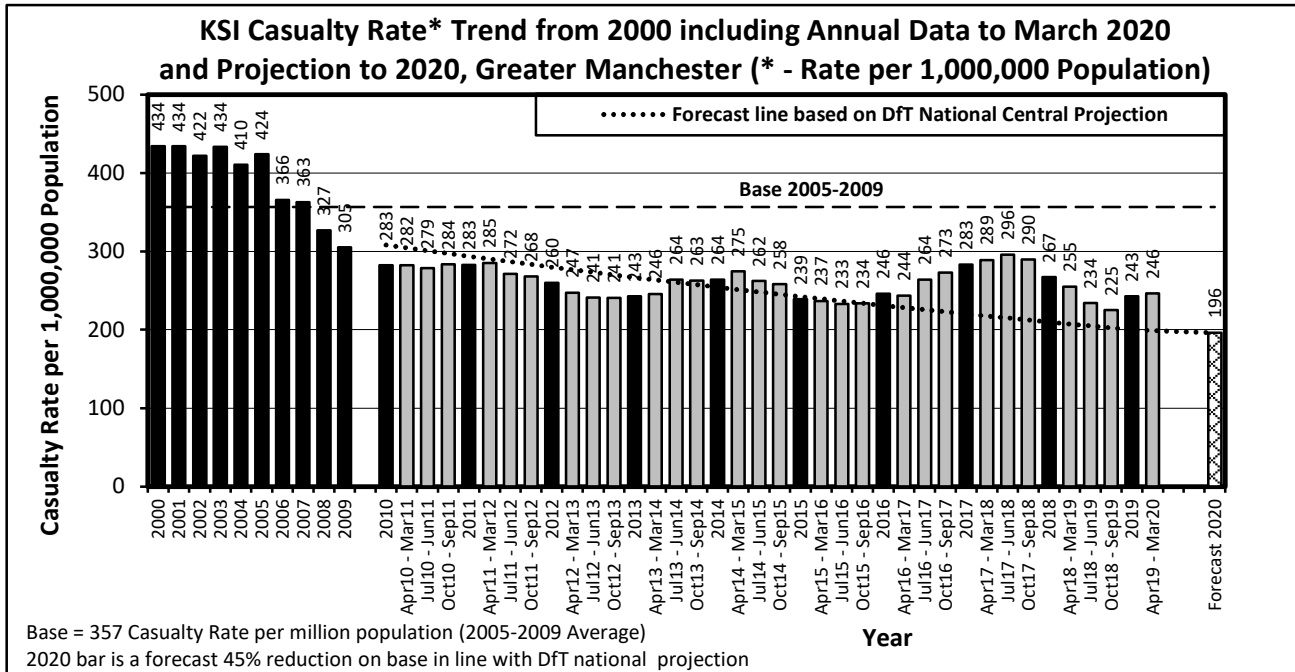
## KSI Casualty Rates: Casualty Rate Trend 2000 - March 2020 and Projection to 2020

The table shows Greater Manchester KSI casualty rates\* from 2000 - March 2020 and forecast casualty reductions based on the DfT National Central Projection as outlined in the Strategic Framework for Road Safety. (\*based on ONS population projections).

KSI Casualty Rate Trend 2000 - March 2020 and Projection to 2020				
Year	KSI Casualty Rates**		Index	
	Actual	Projection	Actual	Projection
2000	434			
2001	434			
2002	422			
2003	434			
2004	410			
2005	424			
2006	366			
2007	363			
2008	327			
2009	305			
2005-2009 Baseline	357		100	
2010	283	308	79	86
2011	283	294	79	82
2012	260	280	73	78
2013	243	267	68	75
2014	264	254	74	71
2015	239	242	67	68
2016	246	231	69	65
2017	283	220	79	62
2018	267	210	75	59
2019	243	200	68	56
Apr 2019-Mar 2020	246	199	69	56
2020		196		55

Notes: \*\* - KSI rates per 1,000,000 population

Index is based on 2005-2009 average



<b>Progress Towards KSI Casualty Rate* Reduction Forecast by District</b>			
<b>KSI Casualty Rates* (Progress Towards KPI 11)</b>			
<b>District</b>	<b>Base</b>	<b>Apr 19 to Mar 20**</b>	<b>Vision 2020</b>
Bolton	357	277	196
Bury	349	221	192
Manchester	480	252	264
Oldham	355	310	195
Rochdale	343	295	189
Salford	392	255	216
Stockport	275	158	151
Tameside	296	182	163
Trafford	269	237	148
Wigan	338	270	186
<b>Greater Manchester</b>	<b>357</b>	<b>246</b>	<b>196</b>

<b>Index of Progress Towards KSI Casualty Rate* Reduction Forecast by District</b>			
<b>KSI Casualty Rates* (Progress Towards KPI 11)</b>			
<b>District</b>	<b>Base</b>	<b>Apr 19 to Mar 20**</b>	<b>Vision 2020</b>
Bolton	100	78	55
Bury	100	63	55
Manchester	100	52	55
Oldham	100	87	55
Rochdale	100	86	55
Salford	100	65	55
Stockport	100	57	55
Tameside	100	61	55
Trafford	100	88	55
Wigan	100	80	55
<b>Greater Manchester</b>	<b>100</b>	<b>69</b>	<b>55</b>

Notes: Base = Average 2005-2009 = 100

\* - KSI rates per 1,000,000 resident population

\*\* - Uses figures provided by ONS for the mid-year estimate of population for 2018