



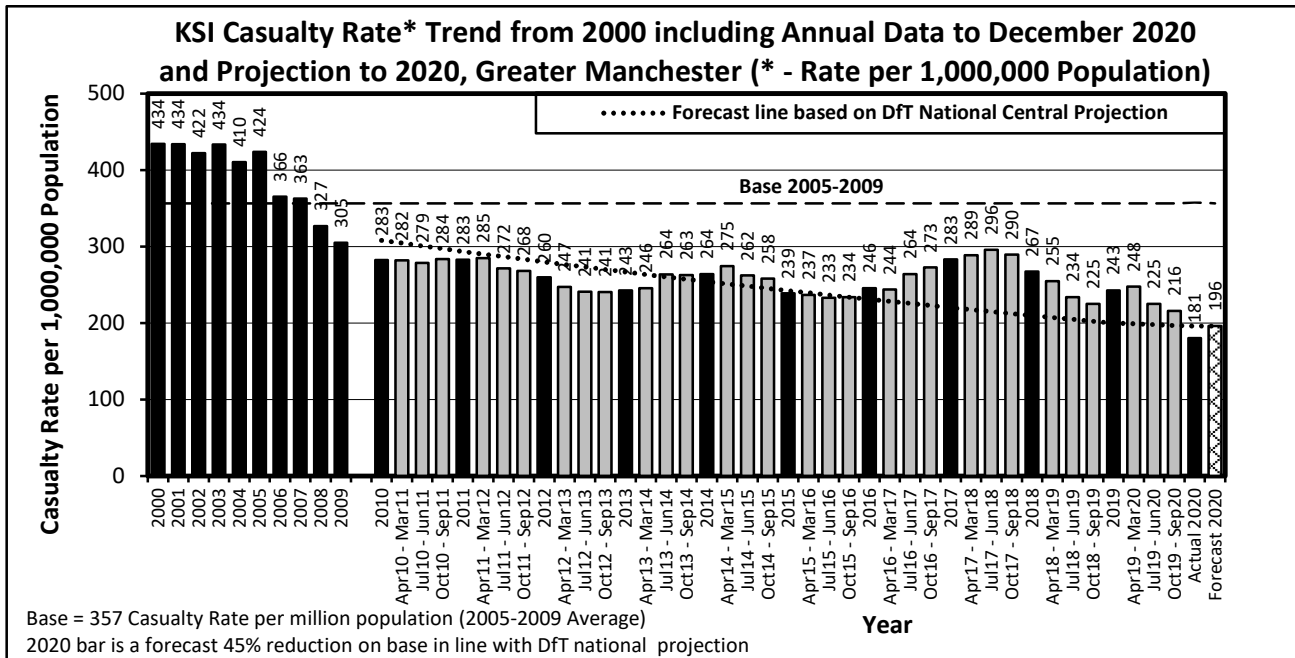
KSI Casualty Rates: Casualty Rate Trend 2000 - December 2020 and Projection to 2020

The table shows Greater Manchester KSI casualty rates* from 2000 - December 2020 and forecast casualty reductions based on the DfT National Central Projection as outlined in the Strategic Framework for Road Safety. (*based on ONS population projections).

KSI Casualty Rate Trend 2000 - December 2020 and Projection to 2020				
Year	KSI Casualty Rates**		Index	
	Actual	Projection	Actual	Projection
2000	434			
2001	434			
2002	422			
2003	434			
2004	410			
2005	424			
2006	366			
2007	363			
2008	327			
2009	305			
2005-2009 Baseline	357		100	
2010	283	308	79	86
2011	283	294	79	82
2012	260	280	73	78
2013	243	267	68	75
2014	264	254	74	71
2015	239	242	67	68
2016	246	231	69	65
2017	283	220	79	62
2018	267	210	75	59
2019	243	200	68	56
2020	181	196	51	55

Notes: ** - KSI rates per 1,000,000 population

Index is based on 2005-2009 average



Progress Towards KSI Casualty Rate* Reduction Forecast by District			
KSI Casualty Rates* (Progress Towards KPI 11)			
District	Base	Jan 20 to Dec 20**	Vision 2020
Bolton	357	177	196
Bury	349	162	192
Manchester	480	199	264
Oldham	355	207	195
Rochdale	343	180	189
Salford	392	197	216
Stockport	275	160	151
Tameside	296	185	163
Trafford	269	139	148
Wigan	338	176	186
Greater Manchester	357	181	196

Index of Progress Towards KSI Casualty Rate* Reduction Forecast by District				
District	KSI Casualty Rates* (Progress Towards KPI 11)			
	Base	Jan 20 to Dec 20	Vision 2020	% Reduction Needed
Bolton	100	50	55	Achieved
Bury	100	47	55	Achieved
Manchester	100	41	55	Achieved
Oldham	100	58	55	3.2
Rochdale	100	52	55	Achieved
Salford	100	50	55	Achieved
Stockport	100	58	55	3.3
Tameside	100	63	55	7.6
Trafford	100	52	55	Achieved
Wigan	100	52	55	Achieved
Greater Manchester	100	51	55	Achieved

Notes: Base = Average 2005-2009 = 100

* - KSI rates per 1,000,000 resident population

** - Uses figures provided by ONS for the mid-year estimate of population for 2019