

VISION 2020 FACTSHEET



THE SURVEYS, RESEARCH & ANALYSIS DEPARTMENT

BOLTON KSI CASUALTY STATISTICS

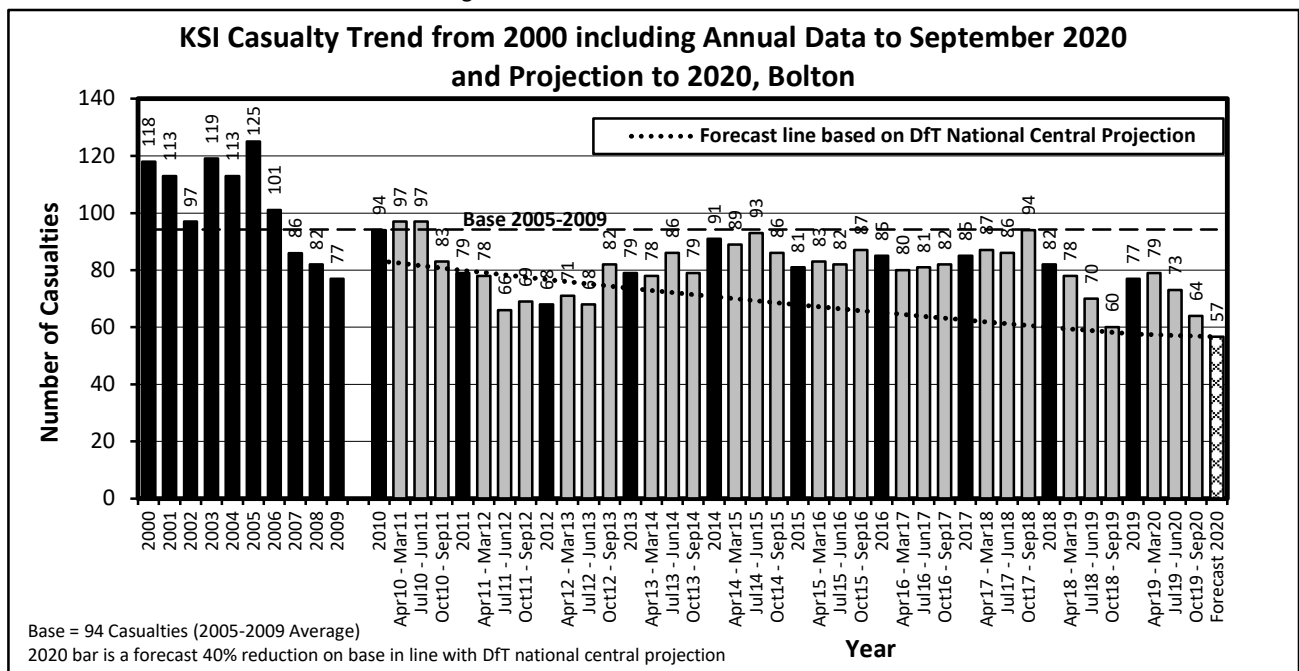
Latest 12 Months Data October 2019 to September 2020

KSI Casualties: Casualty Trend 2000 - September 2020 and Projection to 2020

The table shows Bolton KSI casualties from 2000 - September 2020 and forecast casualty reductions based on the DfT National Central Projection as outlined in the Strategic Framework for Road Safety

| KSI Casualty Trend 2000 - September 2020 and Projection to 2020 | | | | |
|---|---------------------|------------|--------|------------|
| Year | KSI Casualty Totals | | Index | |
| | Actual | Projection | Actual | Projection |
| 2000 | 118 | | | |
| 2001 | 113 | | | |
| 2002 | 97 | | | |
| 2003 | 119 | | | |
| 2004 | 113 | | | |
| 2005 | 125 | | | |
| 2006 | 101 | | | |
| 2007 | 86 | | | |
| 2008 | 82 | | | |
| 2009 | 77 | | | |
| 2005-2009 Baseline | 94 | | 100 | |
| 2010 | 94 | 83 | 100 | 88 |
| 2011 | 79 | 80 | 84 | 85 |
| 2012 | 68 | 77 | 72 | 81 |
| 2013 | 79 | 74 | 84 | 78 |
| 2014 | 91 | 71 | 97 | 75 |
| 2015 | 81 | 68 | 86 | 72 |
| 2016 | 85 | 65 | 90 | 69 |
| 2017 | 85 | 63 | 90 | 66 |
| 2018 | 82 | 60 | 87 | 64 |
| 2019 | 77 | 58 | 82 | 61 |
| Apr 2019-Mar 2020 | 79 | 57 | 84 | 61 |
| Jul 2019-Jun 2020 | 73 | 57 | 77 | 61 |
| Oct 2019-Sep 2020 | 64 | 57 | 68 | 60 |
| 2020 | | 57 | | 60 |

Note: Index is based on 2005-2009 average



VISION 2020 FACTSHEET



THE SURVEYS, RESEARCH & ANALYSIS DEPARTMENT

BURY KSI CASUALTY STATISTICS

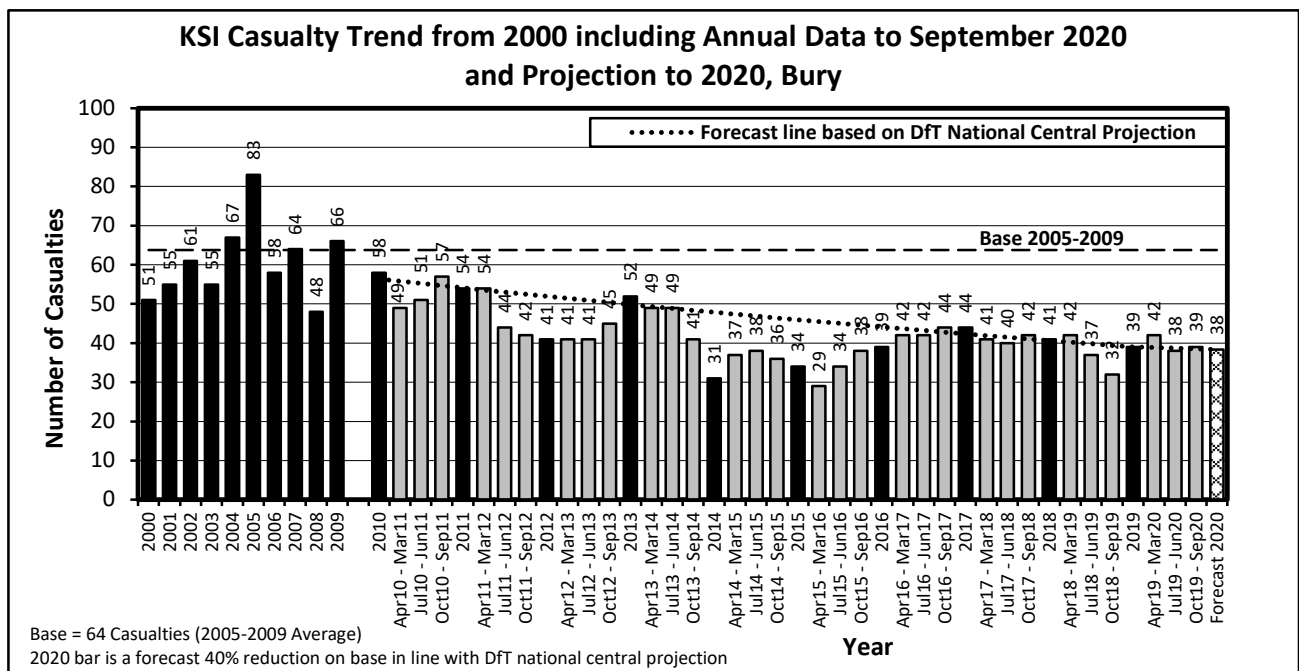
Latest 12 Months Data October 2019 to September 2020

KSI Casualties: Casualty Trend 2000 - September 2020 and Projection to 2020

The table shows Bury KSI casualties from 2000 - September 2020 and forecast casualty reductions based on the DfT National Central Projection as outlined in the Strategic Framework for Road Safety

| KSI Casualty Trend 2000 - September 2020 and Projection to 2020 | | | | |
|---|---------------------|------------|--------|------------|
| Year | KSI Casualty Totals | | Index | |
| | Actual | Projection | Actual | Projection |
| 2000 | 51 | | | |
| 2001 | 55 | | | |
| 2002 | 61 | | | |
| 2003 | 55 | | | |
| 2004 | 67 | | | |
| 2005 | 83 | | | |
| 2006 | 58 | | | |
| 2007 | 64 | | | |
| 2008 | 48 | | | |
| 2009 | 66 | | | |
| 2005-2009 Baseline | 64 | | 100 | |
| 2010 | 58 | 56 | 91 | 88 |
| 2011 | 54 | 54 | 85 | 85 |
| 2012 | 41 | 52 | 64 | 81 |
| 2013 | 52 | 50 | 82 | 78 |
| 2014 | 31 | 48 | 49 | 75 |
| 2015 | 34 | 46 | 53 | 72 |
| 2016 | 39 | 44 | 61 | 69 |
| 2017 | 44 | 42 | 69 | 66 |
| 2018 | 41 | 41 | 64 | 64 |
| 2019 | 39 | 39 | 61 | 61 |
| Apr 2019-Mar 2020 | 42 | 39 | 66 | 61 |
| Jul 2019-Jun 2020 | 38 | 39 | 60 | 61 |
| Oct 2019-Sep 2020 | 39 | 39 | 61 | 60 |
| 2020 | | 38 | | 60 |

Note: Index is based on 2005-2009 average



VISION 2020 FACTSHEET



THE SURVEYS, RESEARCH & ANALYSIS DEPARTMENT

MANCHESTER KSI CASUALTY STATISTICS

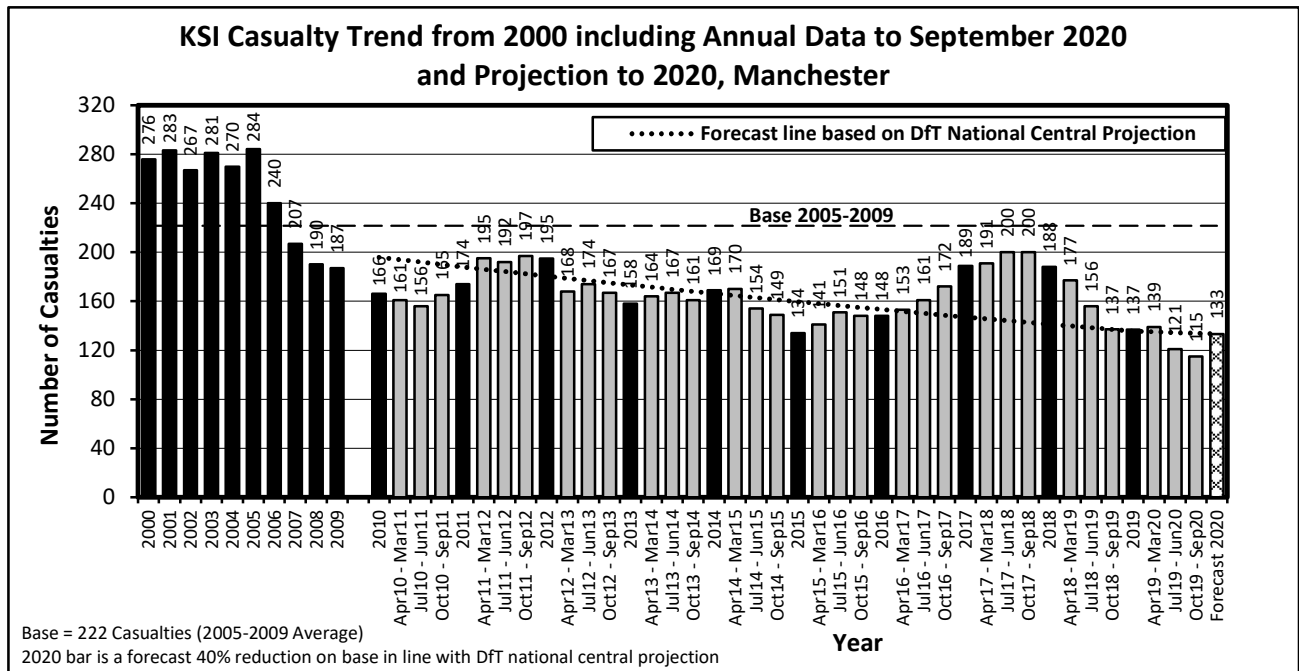
Latest 12 Months Data October 2019 to September 2020

KSI Casualties: Casualty Trend 2000 - September 2020 and Projection to 2020

The table shows Manchester KSI casualties from 2000 - September 2020 and forecast casualty reductions based on the DfT National Central Projection as outlined in the Strategic Framework for Road Safety

| KSI Casualty Trend 2000 - September 2020 and Projection to 2020 | | | | |
|---|---------------------|------------|--------|------------|
| Year | KSI Casualty Totals | | Index | |
| | Actual | Projection | Actual | Projection |
| 2000 | 276 | | | |
| 2001 | 283 | | | |
| 2002 | 267 | | | |
| 2003 | 281 | | | |
| 2004 | 270 | | | |
| 2005 | 284 | | | |
| 2006 | 240 | | | |
| 2007 | 207 | | | |
| 2008 | 190 | | | |
| 2009 | 187 | | | |
| 2005-2009 Baseline | 222 | | 100 | |
| 2010 | 166 | 196 | 75 | 88 |
| 2011 | 174 | 188 | 79 | 85 |
| 2012 | 195 | 180 | 88 | 81 |
| 2013 | 158 | 173 | 71 | 78 |
| 2014 | 169 | 166 | 76 | 75 |
| 2015 | 134 | 160 | 60 | 72 |
| 2016 | 148 | 153 | 67 | 69 |
| 2017 | 189 | 147 | 85 | 66 |
| 2018 | 188 | 141 | 85 | 64 |
| 2019 | 137 | 136 | 62 | 61 |
| Apr 2019-Mar 2020 | 139 | 135 | 63 | 61 |
| Jul 2019-Jun 2020 | 121 | 134 | 55 | 61 |
| Oct 2019-Sep 2020 | 115 | 134 | 52 | 60 |
| 2020 | | 133 | | 60 |

Note: Index is based on 2005-2009 average

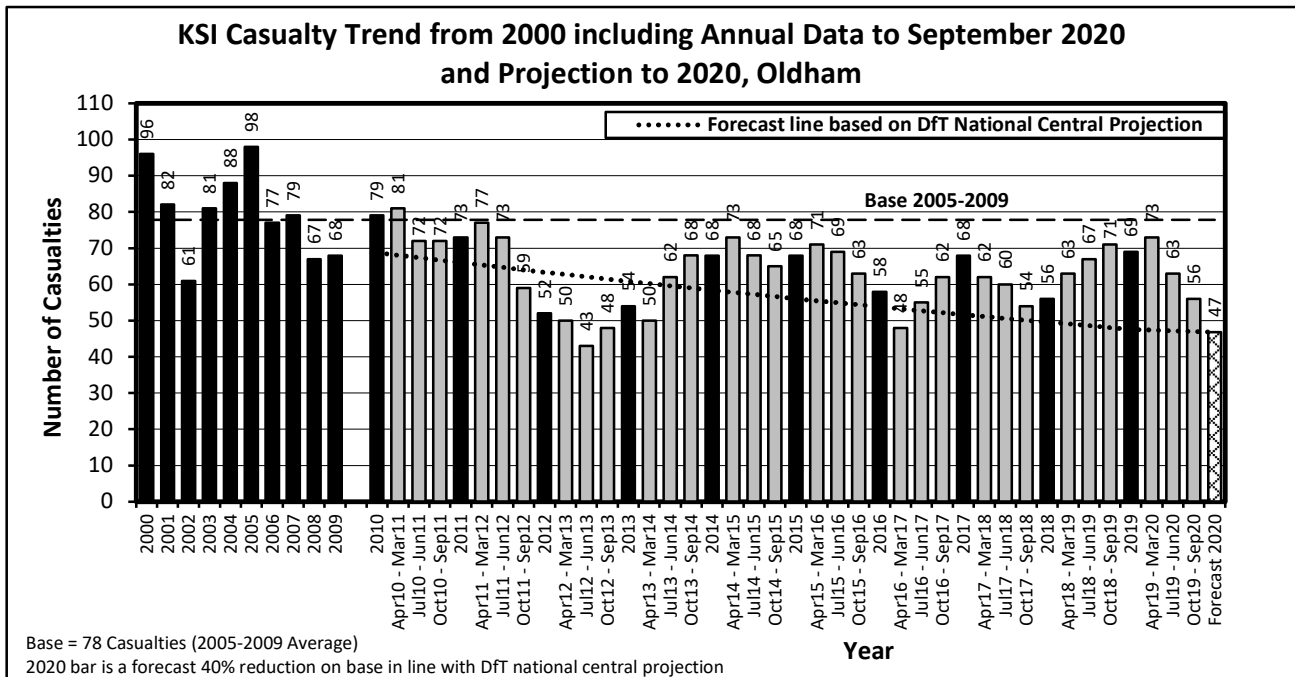


KSI Casualties: Casualty Trend 2000 - September 2020 and Projection to 2020

The table shows Oldham KSI casualties from 2000 - September 2020 and forecast casualty reductions based on the DfT National Central Projection as outlined in the Strategic Framework for Road Safety

| KSI Casualty Trend 2000 - September 2020 and Projection to 2020 | | | | |
|---|---------------------|------------|--------|------------|
| Year | KSI Casualty Totals | | Index | |
| | Actual | Projection | Actual | Projection |
| 2000 | 96 | | | |
| 2001 | 82 | | | |
| 2002 | 61 | | | |
| 2003 | 81 | | | |
| 2004 | 88 | | | |
| 2005 | 98 | | | |
| 2006 | 77 | | | |
| 2007 | 79 | | | |
| 2008 | 67 | | | |
| 2009 | 68 | | | |
| 2005-2009 Baseline | 78 | | 100 | |
| 2010 | 79 | 69 | 102 | 88 |
| 2011 | 73 | 66 | 94 | 85 |
| 2012 | 52 | 63 | 67 | 81 |
| 2013 | 54 | 61 | 69 | 78 |
| 2014 | 68 | 58 | 87 | 75 |
| 2015 | 68 | 56 | 87 | 72 |
| 2016 | 58 | 54 | 75 | 69 |
| 2017 | 68 | 52 | 87 | 66 |
| 2018 | 56 | 50 | 72 | 64 |
| 2019 | 69 | 48 | 89 | 61 |
| Apr 2019-Mar 2020 | 73 | 47 | 94 | 61 |
| Jul 2019-Jun 2020 | 63 | 47 | 81 | 61 |
| Oct 2019-Sep 2020 | 56 | 47 | 72 | 60 |
| 2020 | | 47 | | 60 |

Note: Index is based on 2005-2009 average



VISION 2020 FACTSHEET



THE SURVEYS, RESEARCH & ANALYSIS DEPARTMENT

ROCHDALE KSI CASUALTY STATISTICS

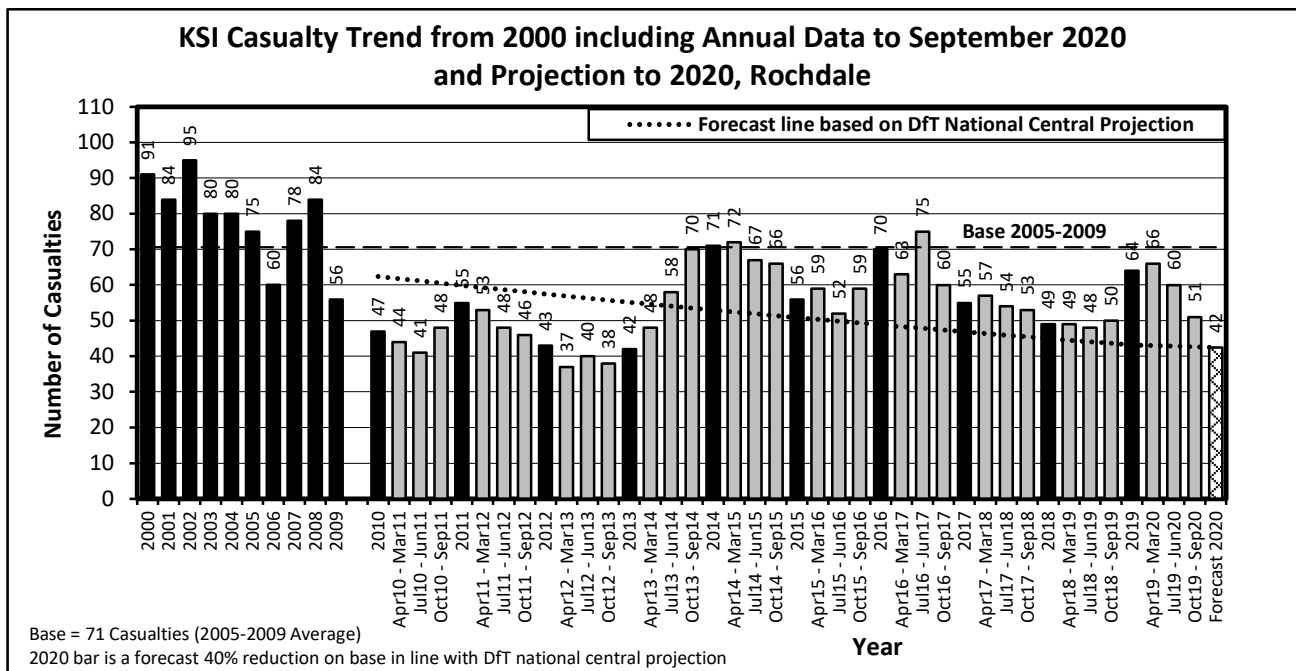
Latest 12 Months Data October 2019 to September 2020

KSI Casualties: Casualty Trend 2000 - September 2020 and Projection to 2020

The table shows Rochdale KSI casualties from 2000 - September 2020 and forecast casualty reductions based on the DfT National Central Projection as outlined in the Strategic Framework for Road Safety

| KSI Casualty Trend 2000 - September 2020 and Projection to 2020 | | | | |
|---|---------------------|------------|--------|------------|
| Year | KSI Casualty Totals | | Index | |
| | Actual | Projection | Actual | Projection |
| 2000 | 91 | | | |
| 2001 | 84 | | | |
| 2002 | 95 | | | |
| 2003 | 80 | | | |
| 2004 | 80 | | | |
| 2005 | 75 | | | |
| 2006 | 60 | | | |
| 2007 | 78 | | | |
| 2008 | 84 | | | |
| 2009 | 56 | | | |
| 2005-2009 Baseline | 71 | | 100 | |
| 2010 | 47 | 62 | 67 | 88 |
| 2011 | 55 | 60 | 78 | 85 |
| 2012 | 43 | 57 | 61 | 81 |
| 2013 | 42 | 55 | 59 | 78 |
| 2014 | 71 | 53 | 101 | 75 |
| 2015 | 56 | 51 | 79 | 72 |
| 2016 | 70 | 49 | 99 | 69 |
| 2017 | 55 | 47 | 78 | 66 |
| 2018 | 49 | 45 | 69 | 64 |
| 2019 | 64 | 43 | 91 | 61 |
| Apr 2019-Mar 2020 | 66 | 43 | 93 | 61 |
| Jul 2019-Jun 2020 | 60 | 43 | 85 | 61 |
| Oct 2019-Sep 2020 | 51 | 43 | 72 | 60 |
| 2020 | | 42 | | 60 |

Note: Index is based on 2005-2009 average



VISION 2020 FACTSHEET



THE SURVEYS, RESEARCH & ANALYSIS DEPARTMENT

SALFORD KSI CASUALTY STATISTICS

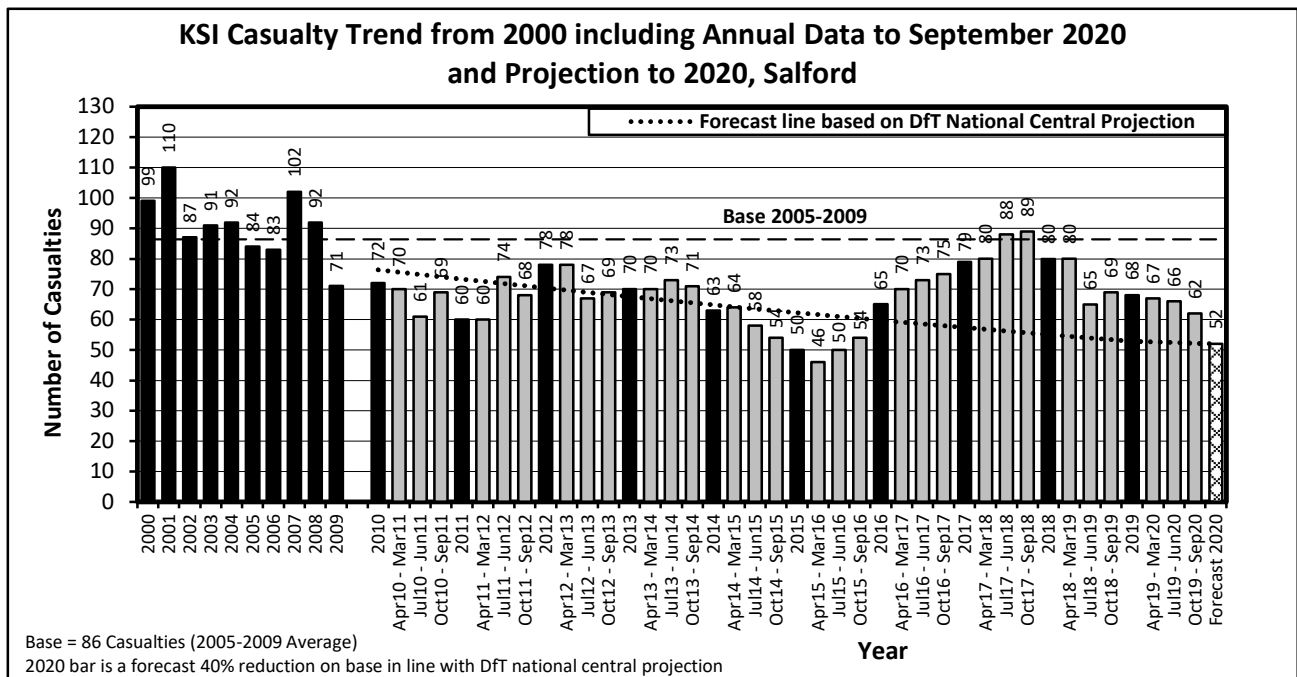
Latest 12 Months Data October 2019 to September 2020

KSI Casualties: Casualty Trend 2000 - September 2020 and Projection to 2020

The table shows Salford KSI casualties from 2000 - September 2020 and forecast casualty reductions based on the DfT National Central Projection as outlined in the Strategic Framework for Road Safety

| KSI Casualty Trend 2000 - September 2020 and Projection to 2020 | | | | |
|---|---------------------|------------|--------|------------|
| Year | KSI Casualty Totals | | Index | |
| | Actual | Projection | Actual | Projection |
| 2000 | 99 | | | |
| 2001 | 110 | | | |
| 2002 | 87 | | | |
| 2003 | 91 | | | |
| 2004 | 92 | | | |
| 2005 | 84 | | | |
| 2006 | 83 | | | |
| 2007 | 102 | | | |
| 2008 | 92 | | | |
| 2009 | 71 | | | |
| 2005-2009 Baseline | 86 | | 100 | |
| 2010 | 72 | 76 | 83 | 88 |
| 2011 | 60 | 73 | 69 | 85 |
| 2012 | 78 | 70 | 90 | 81 |
| 2013 | 70 | 68 | 81 | 78 |
| 2014 | 63 | 65 | 73 | 75 |
| 2015 | 50 | 62 | 58 | 72 |
| 2016 | 65 | 60 | 75 | 69 |
| 2017 | 79 | 57 | 91 | 66 |
| 2018 | 80 | 55 | 93 | 64 |
| 2019 | 68 | 53 | 79 | 61 |
| Apr 2019-Mar 2020 | 67 | 53 | 78 | 61 |
| Jul 2019-Jun 2020 | 66 | 52 | 76 | 61 |
| Oct 2019-Sep 2020 | 62 | 52 | 72 | 52 |
| 2020 | | 52 | | 60 |

Note: Index is based on 2005-2009 average



VISION 2020 FACTSHEET



THE SURVEYS, RESEARCH & ANALYSIS DEPARTMENT

STOCKPORT KSI CASUALTY STATISTICS

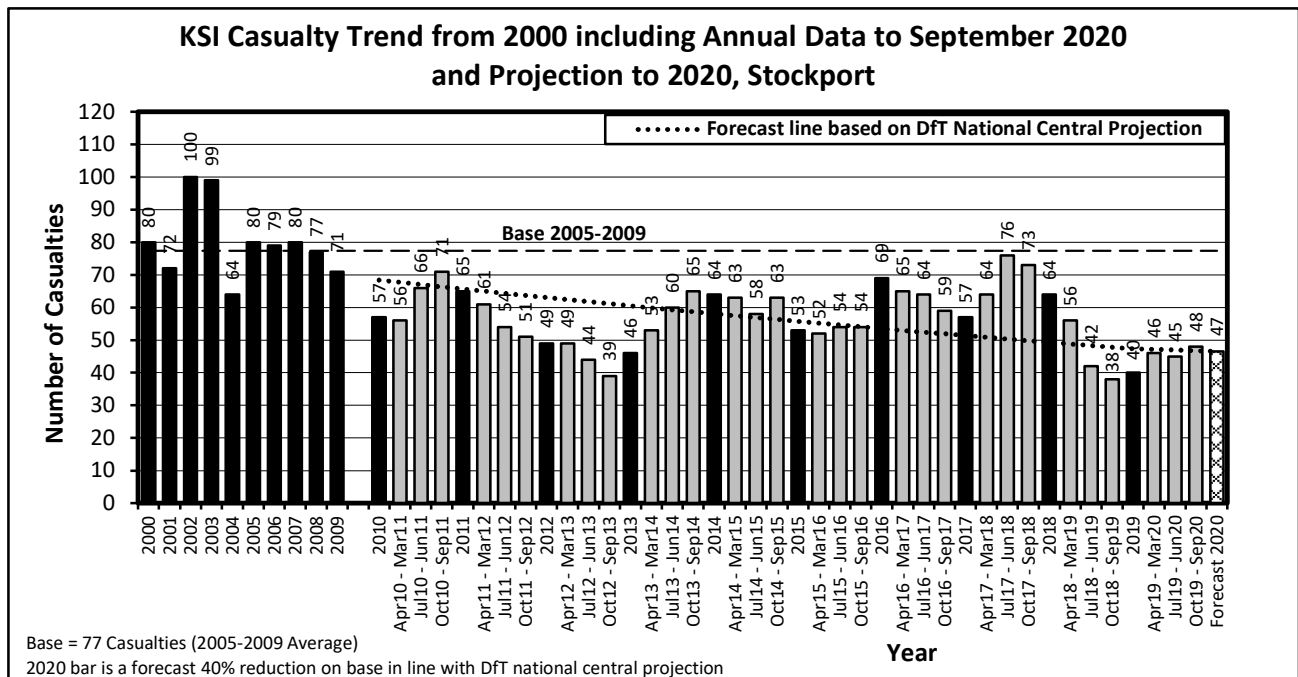
Latest 12 Months Data October 2019 to September 2020

KSI Casualties: Casualty Trend 2000 - September 2020 and Projection to 2020

The table shows Stockport KSI casualties from 2000 - September 2020 and forecast casualty reductions based on the DfT National Central Projection as outlined in the Strategic Framework for Road Safety

| KSI Casualty Trend 2000 - September 2020 and Projection to 2020 | | | | |
|---|---------------------|------------|--------|------------|
| Year | KSI Casualty Totals | | Index | |
| | Actual | Projection | Actual | Projection |
| 2000 | 80 | | | |
| 2001 | 72 | | | |
| 2002 | 100 | | | |
| 2003 | 99 | | | |
| 2004 | 64 | | | |
| 2005 | 80 | | | |
| 2006 | 79 | | | |
| 2007 | 80 | | | |
| 2008 | 77 | | | |
| 2009 | 71 | | | |
| 2005-2009 Baseline | 77 | | 100 | |
| 2010 | 57 | 68 | 74 | 88 |
| 2011 | 65 | 66 | 84 | 85 |
| 2012 | 49 | 63 | 63 | 81 |
| 2013 | 46 | 61 | 59 | 78 |
| 2014 | 64 | 58 | 83 | 75 |
| 2015 | 53 | 56 | 68 | 72 |
| 2016 | 69 | 54 | 89 | 69 |
| 2017 | 57 | 51 | 74 | 66 |
| 2018 | 64 | 49 | 83 | 64 |
| 2019 | 40 | 47 | 52 | 61 |
| Apr 2019-Mar 2020 | 46 | 47 | 59 | 61 |
| Jul 2019-Jun 2020 | 45 | 47 | 58 | 61 |
| Oct 2019-Sep 2020 | 48 | 47 | 62 | 60 |
| 2020 | | 47 | | 60 |

Note: Index is based on 2005-2009 average



VISION 2020 FACTSHEET



THE SURVEYS, RESEARCH & ANALYSIS DEPARTMENT

TAMESIDE KSI CASUALTY STATISTICS

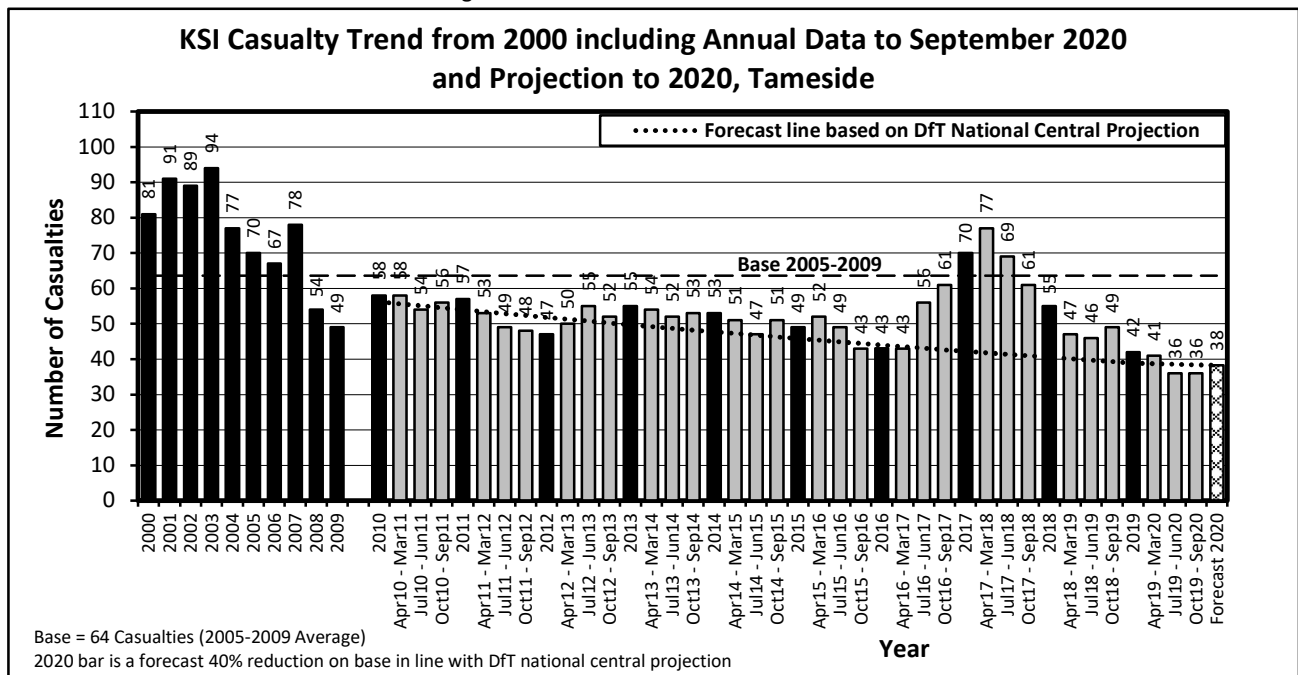
Latest 12 Months Data October 2019 to September 2020

KSI Casualties: Casualty Trend 2000 - September 2020 and Projection to 2020

The table shows Tameside KSI casualties from 2000 - September 2020 and forecast casualty reductions based on the DfT National Central Projection as outlined in the Strategic Framework for Road Safety

| KSI Casualty Trend 2000 - September 2020 and Projection to 2020 | | | | |
|---|---------------------|------------|--------|------------|
| Year | KSI Casualty Totals | | Index | |
| | Actual | Projection | Actual | Projection |
| 2000 | 81 | | | |
| 2001 | 91 | | | |
| 2002 | 89 | | | |
| 2003 | 94 | | | |
| 2004 | 77 | | | |
| 2005 | 70 | | | |
| 2006 | 67 | | | |
| 2007 | 78 | | | |
| 2008 | 54 | | | |
| 2009 | 49 | | | |
| 2005-2009 Baseline | 64 | | 100 | |
| 2010 | 58 | 56 | 91 | 88 |
| 2011 | 57 | 54 | 90 | 85 |
| 2012 | 47 | 52 | 74 | 81 |
| 2013 | 55 | 50 | 86 | 78 |
| 2014 | 53 | 48 | 83 | 75 |
| 2015 | 49 | 46 | 77 | 72 |
| 2016 | 43 | 44 | 68 | 69 |
| 2017 | 70 | 42 | 110 | 66 |
| 2018 | 55 | 41 | 86 | 64 |
| 2019 | 42 | 39 | 66 | 61 |
| Apr 2019-Mar 2020 | 41 | 39 | 64 | 61 |
| Jul 2019-Jun 2020 | 36 | 39 | 57 | 61 |
| Oct 2019-Sep 2020 | 36 | 38 | 57 | 60 |
| 2020 | | 38 | | 60 |

Note: Index is based on 2005-2009 average



VISION 2020 FACTSHEET



THE SURVEYS, RESEARCH & ANALYSIS DEPARTMENT

TRAFFORD KSI CASUALTY STATISTICS

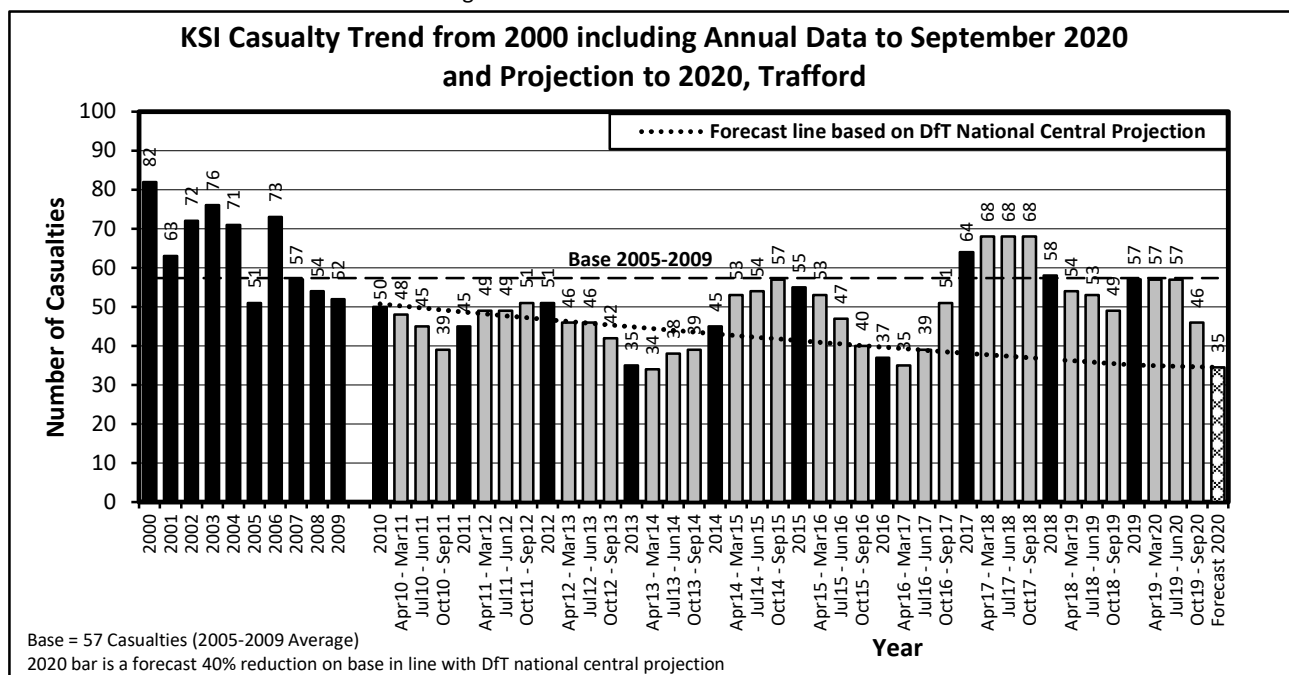
Latest 12 Months Data October 2019 to September 2020

KSI Casualties: Casualty Trend 2000 - September 2020 and Projection to 2020

The table shows Trafford KSI casualties from 2000 - September 2020 and forecast casualty reductions based on the DfT National Central Projection as outlined in the Strategic Framework for Road Safety

| KSI Casualty Trend 2000 - September 2020 and Projection to 2020 | | | | |
|---|---------------------|------------|--------|------------|
| Year | KSI Casualty Totals | | Index | |
| | Actual | Projection | Actual | Projection |
| 2000 | 82 | | | |
| 2001 | 63 | | | |
| 2002 | 72 | | | |
| 2003 | 76 | | | |
| 2004 | 71 | | | |
| 2005 | 51 | | | |
| 2006 | 73 | | | |
| 2007 | 57 | | | |
| 2008 | 54 | | | |
| 2009 | 52 | | | |
| 2005-2009 Baseline | 57 | | 100 | |
| 2010 | 50 | 51 | 87 | 88 |
| 2011 | 45 | 49 | 78 | 85 |
| 2012 | 51 | 47 | 89 | 81 |
| 2013 | 35 | 45 | 61 | 78 |
| 2014 | 45 | 43 | 78 | 75 |
| 2015 | 55 | 41 | 96 | 72 |
| 2016 | 37 | 40 | 64 | 69 |
| 2017 | 64 | 38 | 111 | 66 |
| 2018 | 58 | 37 | 101 | 64 |
| 2019 | 57 | 35 | 99 | 61 |
| Apr 2019-Mar 2020 | 57 | 35 | 99 | 61 |
| Jul 2019-Jun 2020 | 57 | 35 | 99 | 61 |
| Oct 2019-Sep 2020 | 46 | 35 | 80 | 60 |
| 2020 | | 35 | | 60 |

Note: Index is based on 2005-2009 average



VISION 2020 FACTSHEET



THE SURVEYS, RESEARCH & ANALYSIS DEPARTMENT

WIGAN KSI CASUALTY STATISTICS

Latest 12 Months Data October 2019 to September 2020

KSI Casualties: Casualty Trend 2000 - September 2020 and Projection to 2020

The table shows Wigan KSI casualties from 2000 - September 2020 and forecast casualty reductions based on the DfT National Central Projection as outlined in the Strategic Framework for Road Safety

| KSI Casualty Trend 2000 - September 2020 and Projection to 2020 | | | | |
|---|---------------------|------------|--------|------------|
| Year | KSI Casualty Totals | | Index | |
| | Actual | Projection | Actual | Projection |
| 2000 | 149 | | | |
| 2001 | 125 | | | |
| 2002 | 132 | | | |
| 2003 | 120 | | | |
| 2004 | 120 | | | |
| 2005 | 130 | | | |
| 2006 | 96 | | | |
| 2007 | 99 | | | |
| 2008 | 95 | | | |
| 2009 | 97 | | | |
| 2005-2009 Baseline | 103 | | 100 | |
| 2010 | 62 | 91 | 60 | 88 |
| 2011 | 82 | 88 | 79 | 85 |
| 2012 | 74 | 84 | 72 | 81 |
| 2013 | 65 | 81 | 63 | 78 |
| 2014 | 62 | 78 | 60 | 75 |
| 2015 | 73 | 74 | 71 | 72 |
| 2016 | 64 | 71 | 62 | 69 |
| 2017 | 77 | 69 | 74 | 66 |
| 2018 | 75 | 66 | 73 | 64 |
| 2019 | 90 | 63 | 87 | 61 |
| Apr 2019-Mar 2020 | 88 | 63 | 85 | 61 |
| Jul 2019-Jun 2020 | 74 | 63 | 72 | 61 |
| Oct 2019-Sep 2020 | 82 | 62 | 79 | 60 |
| 2020 | | 62 | | 60 |

Note: Index is based on 2005-2009 average

