

VISION 2020 FACTSHEET



THE SURVEYS, RESEARCH & ANALYSIS DEPARTMENT

BOLTON KSI CASUALTY STATISTICS

Latest 12 Months Data April 2019 to March 2020

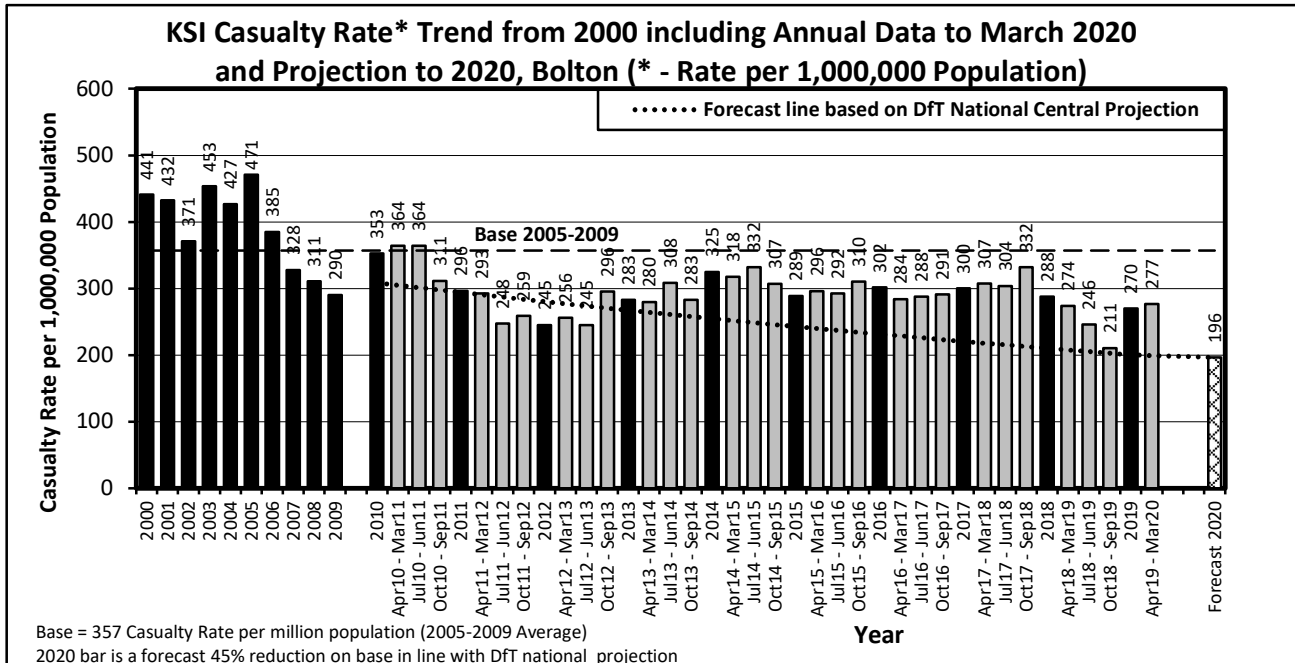
KSI Casualty Rates: Casualty Rate Trend 2000 - March 2020 and Projection to 2020

The table shows Bolton KSI casualty rates* from 2000 - March 2020 and forecast casualty reductions based on the DfT National Central Projection as outlined in the Strategic Framework for Road Safety. (*based on ONS population projections).

KSI Casualty Rate Trend 2000 - March 2020 and Projection to 2020				
Year	KSI Casualty Totals**		Index	
	Actual	Projection	Actual	Projection
2000	441			
2001	432			
2002	371			
2003	453			
2004	427			
2005	471			
2006	385			
2007	328			
2008	311			
2009	290			
2005-2009 Baseline	357		100	
2010	353	309	99	86
2011	296	294	83	82
2012	245	280	69	78
2013	283	267	79	75
2014	325	255	91	71
2015	289	243	81	68
2016	302	231	85	65
2017	300	221	84	62
2018	288	210	81	59
2019	270	200	76	56
Apr 2019-Mar 2020	277	199	78	56
2020		196		55

Notes: ** - KSI rates per 1,000,000 population

Index is based on 2005-2009 average



VISION 2020 FACTSHEET



THE SURVEYS, RESEARCH & ANALYSIS DEPARTMENT

BURY KSI CASUALTY STATISTICS

Latest 12 Months Data April 2019 to March 2020

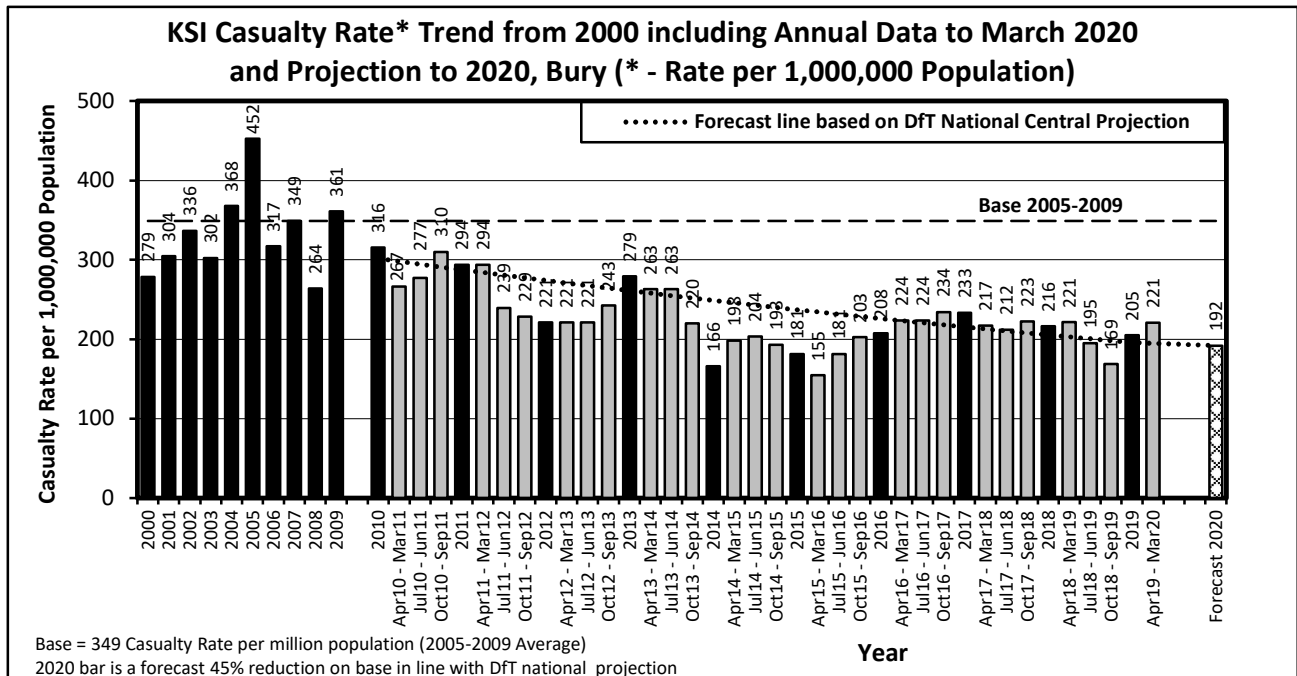
KSI Casualty Rates: Casualty Rate Trend 2000 - March 2020 and Projection to 2020

The table shows Bury KSI casualty rates* from 2000 - March 2020 and forecast casualty reductions based on the DfT National Central Projection as outlined in the Strategic Framework for Road Safety. (*based on ONS population projections).

KSI Casualty Rate Trend 2000 - March 2020 and Projection to 2020				
Year	KSI Casualty Totals**		Index	
	Actual	Projection	Actual	Projection
2000	279			
2001	304			
2002	336			
2003	302			
2004	368			
2005	452			
2006	317			
2007	349			
2008	264			
2009	361			
2005-2009 Baseline	349		100	
2010	316	302	90	86
2011	294	287	84	82
2012	221	274	63	78
2013	279	261	80	75
2014	166	249	48	71
2015	181	237	52	68
2016	208	226	59	65
2017	233	216	67	62
2018	216	205	62	59
2019	205	196	59	56
Apr 2019-Mar 2020	221	195	63	56
2020		192		55

Notes: ** - KSI rates per 1,000,000 population

Index is based on 2005-2009 average



VISION 2020 FACTSHEET



THE SURVEYS, RESEARCH & ANALYSIS DEPARTMENT

MANCHESTER KSI CASUALTY STATISTICS

Latest 12 Months Data April 2019 to March 2020

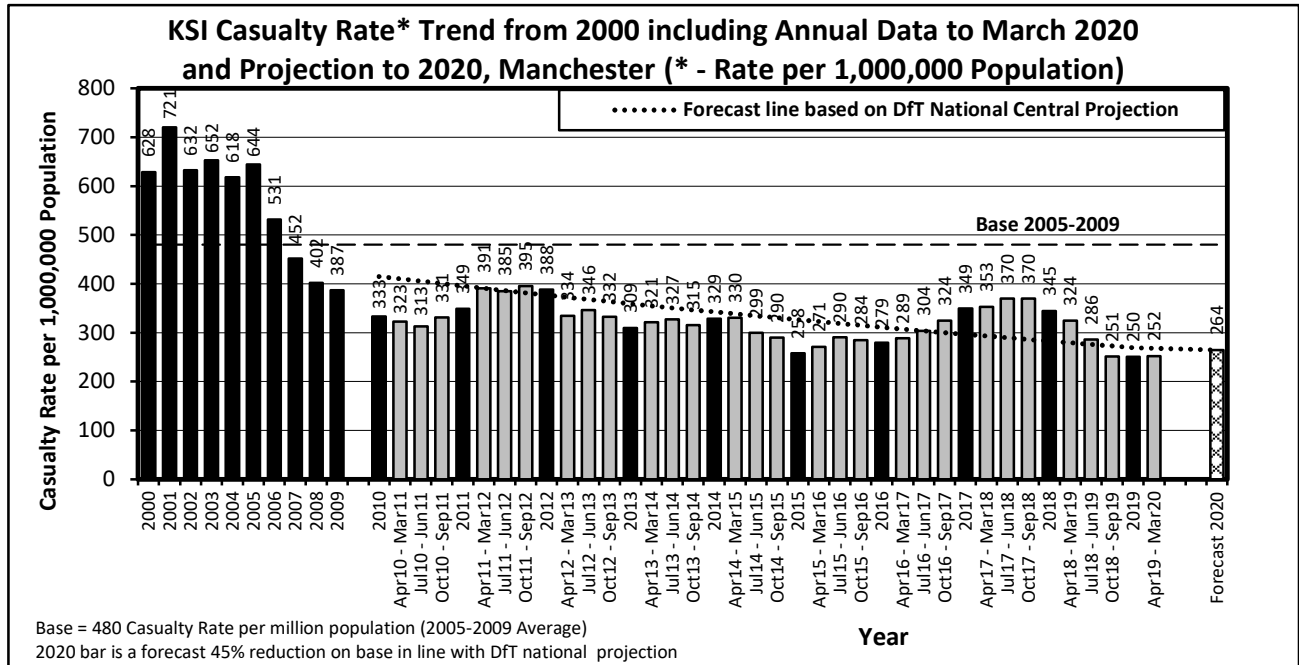
KSI Casualty Rates: Casualty Rate Trend 2000 - March 2020 and Projection to 2020

The table shows Manchester KSI casualty rates* from 2000 - March 2020 and forecast casualty reductions based on the DfT National Central Projection as outlined in the Strategic Framework for Road Safety. (*based on ONS population projections).

KSI Casualty Rate Trend 2000 - March 2020 and Projection to 2020				
Year	KSI Casualty Totals**		Index	
	Actual	Projection	Actual	Projection
2000	628			
2001	721			
2002	632			
2003	652			
2004	618			
2005	644			
2006	531			
2007	452			
2008	402			
2009	387			
2005-2009 Baseline	480		100	
2010	333	415	69	86
2011	349	395	73	82
2012	388	377	81	78
2013	309	359	64	75
2014	329	342	68	71
2015	258	326	54	68
2016	279	311	58	65
2017	349	296	73	62
2018	345	283	72	59
2019	250	269	52	56
Apr 2019-Mar 2020	252	268	52	56
2020		264		55

Notes: ** - KSI rates per 1,000,000 population

Index is based on 2005-2009 average



VISION 2020 FACTSHEET



THE SURVEYS, RESEARCH & ANALYSIS DEPARTMENT

OLDHAM KSI CASUALTY STATISTICS

Latest 12 Months Data April 2019 to March 2020

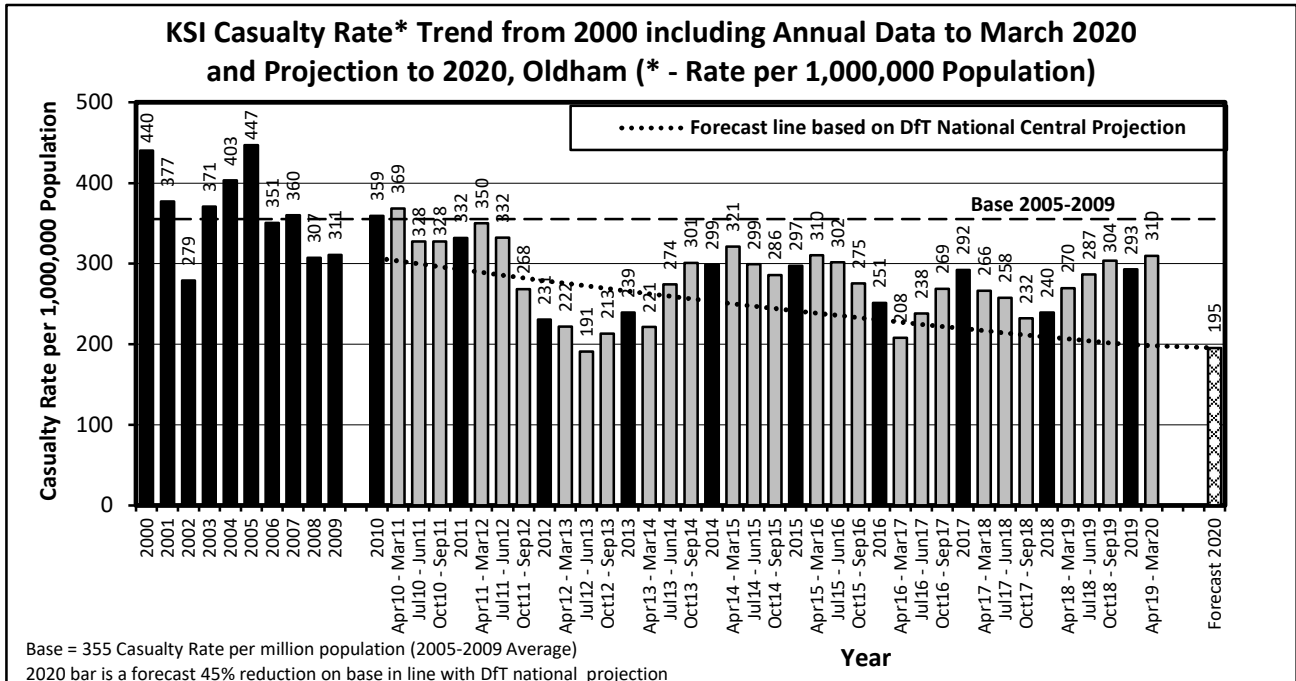
KSI Casualty Rates: Casualty Rate Trend 2000 - March 2020 and Projection to 2020

The table shows Oldham KSI casualty rates* from 2000 - March 2020 and forecast casualty reductions based on the DfT National Central Projection as outlined in the Strategic Framework for Road Safety. (*based on ONS population projections).

KSI Casualty Rate Trend 2000 - March 2020 and Projection to 2020				
Year	KSI Casualty Totals**		Index	
	Actual	Projection	Actual	Projection
2000	440			
2001	377			
2002	279			
2003	371			
2004	403			
2005	447			
2006	351			
2007	360			
2008	307			
2009	311			
2005-2009 Baseline	355		100	
2010	359	307	101	86
2011	332	292	94	82
2012	231	279	65	78
2013	239	266	67	75
2014	299	253	84	71
2015	297	241	84	68
2016	251	230	71	65
2017	292	219	82	62
2018	240	209	67	59
2019	293	199	82	56
Apr 2019-Mar 2020	310	198	87	56
2020		195		55

Notes: ** - KSI rates per 1,000,000 population

Index is based on 2005-2009 average



VISION 2020 FACTSHEET



THE SURVEYS, RESEARCH & ANALYSIS DEPARTMENT

ROCHDALE KSI CASUALTY STATISTICS

Latest 12 Months Data April 2019 to March 2020

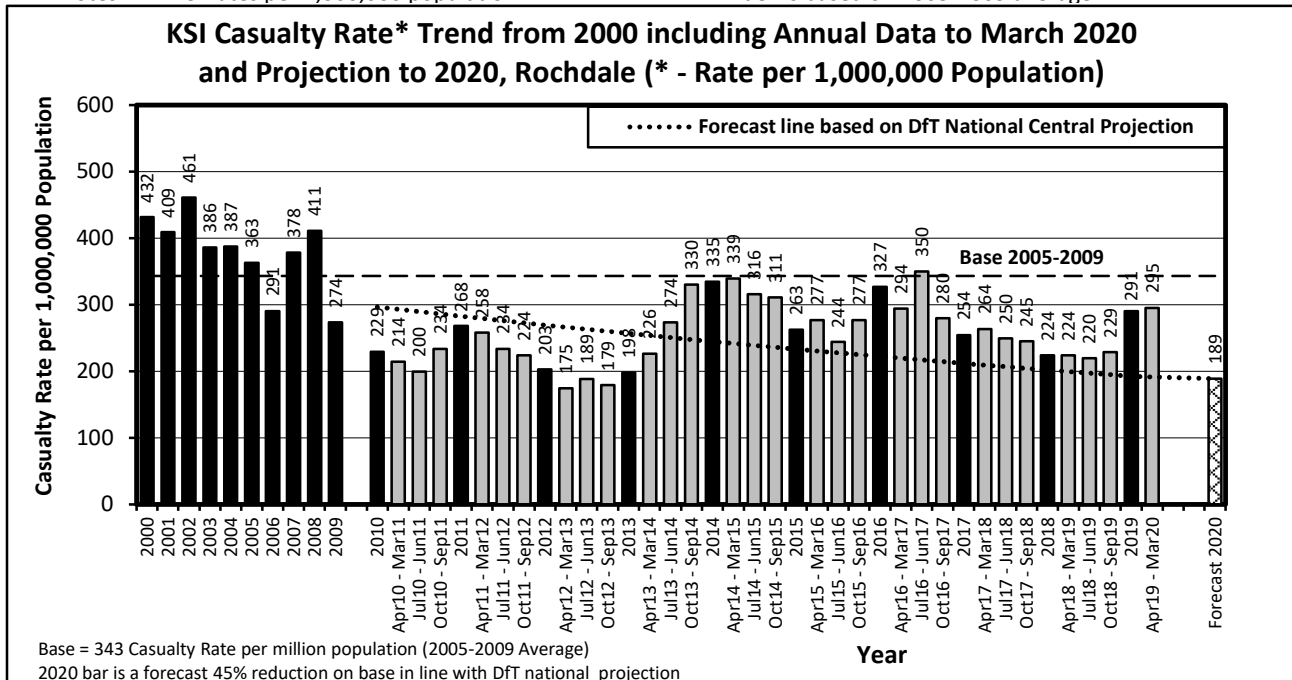
KSI Casualty Rates: Casualty Rate Trend 2000 - March 2020 and Projection to 2020

The table shows Rochdale KSI casualty rates* from 2000 - March 2020 and forecast casualty reductions based on the DfT National Central Projection as outlined in the Strategic Framework for Road Safety. (*based on ONS population projections).

KSI Casualty Rate Trend 2000 - March 2020 and Projection to 2020				
Year	KSI Casualty Totals**		Index	
	Actual	Projection	Actual	Projection
2000	432			
2001	409			
2002	461			
2003	386			
2004	387			
2005	363			
2006	291			
2007	378			
2008	411			
2009	274			
2005-2009 Baseline	343		100	
2010	229	297	67	86
2011	268	283	78	82
2012	203	270	59	78
2013	198	257	58	75
2014	335	245	97	71
2015	263	233	77	68
2016	327	222	95	65
2017	254	212	74	62
2018	224	202	65	59
2019	291	193	85	56
Apr 2019-Mar 2020	295	192	86	56
2020		189		55

Notes: ** - KSI rates per 1,000,000 population

Index is based on 2005-2009 average



VISION 2020 FACTSHEET



THE SURVEYS, RESEARCH & ANALYSIS DEPARTMENT

SALFORD KSI CASUALTY STATISTICS

Latest 12 Months Data April 2019 to March 2020

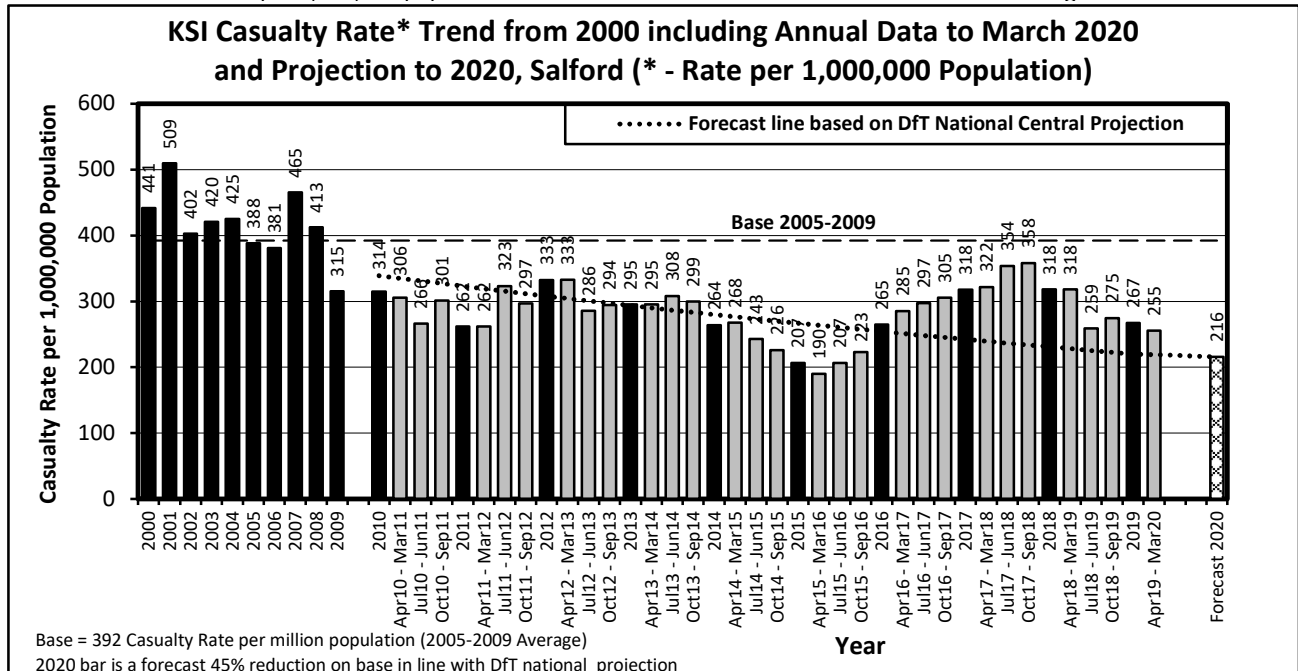
KSI Casualty Rates: Casualty Rate Trend 2000 - March 2020 and Projection to 2020

The table shows Salford KSI casualty rates* from 2000 - March 2020 and forecast casualty reductions based on the DfT National Central Projection as outlined in the Strategic Framework for Road Safety. (*based on ONS population projections).

KSI Casualty Rate Trend 2000 - March 2020 and Projection to 2020				
Year	KSI Casualty Totals**		Index	
	Actual	Projection	Actual	Projection
2000	441			
2001	509			
2002	402			
2003	420			
2004	425			
2005	388			
2006	381			
2007	465			
2008	413			
2009	315			
2005-2009 Baseline	392		100	
2010	314	339	80	86
2011	262	323	67	82
2012	333	308	85	78
2013	295	293	75	75
2014	264	280	67	71
2015	207	267	53	68
2016	265	254	67	65
2017	318	242	81	62
2018	318	231	81	59
2019	267	220	68	56
Apr 2019-Mar 2020	255	219	65	56
2020		216		55

Notes: ** - KSI rates per 1,000,000 population

Index is based on 2005-2009 average



VISION 2020 FACTSHEET



THE SURVEYS, RESEARCH & ANALYSIS DEPARTMENT

STOCKPORT KSI CASUALTY STATISTICS

Latest 12 Months Data April 2019 to March 2020

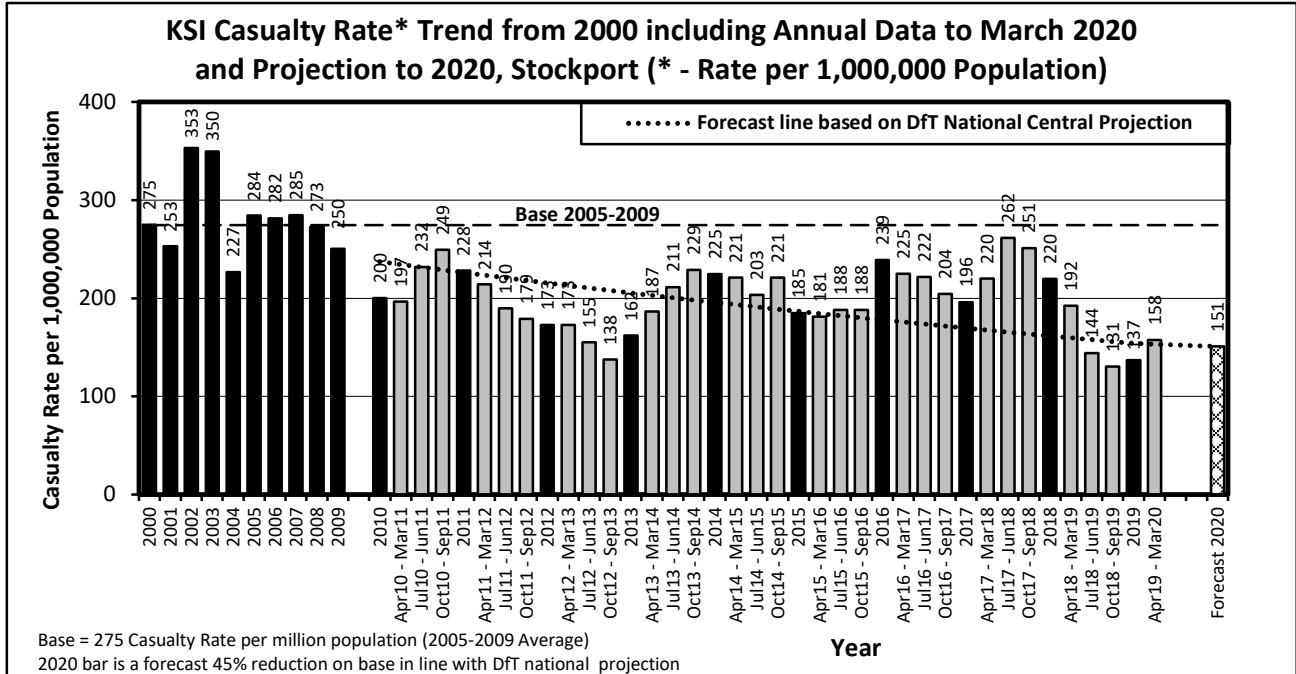
KSI Casualty Rates: Casualty Rate Trend 2000 - March 2020 and Projection to 2020

The table shows Stockport KSI casualty rates* from 2000 - March 2020 and forecast casualty reductions based on the DfT National Central Projection as outlined in the Strategic Framework for Road Safety. (*based on ONS population projections).

KSI Casualty Rate Trend 2000 - March 2020 and Projection to 2020				
Year	KSI Casualty Totals**		Index	
	Actual	Projection	Actual	Projection
2000	275			
2001	253			
2002	353			
2003	350			
2004	227			
2005	284			
2006	282			
2007	285			
2008	273			
2009	250			
2005-2009 Baseline	275		100	
2010	200	237	73	86
2011	228	226	83	82
2012	173	216	63	78
2013	162	205	59	75
2014	225	196	82	71
2015	185	187	67	68
2016	239	178	87	65
2017	196	170	71	62
2018	220	162	80	59
2019	137	154	50	56
Apr 2019-Mar 2020	158	153	57	56
2020		151		55

Notes: ** - KSI rates per 1,000,000 population

Index is based on 2005-2009 average



VISION 2020 FACTSHEET



THE SURVEYS, RESEARCH & ANALYSIS DEPARTMENT

TAMESIDE KSI CASUALTY STATISTICS

Latest 12 Months Data April 2019 to March 2020

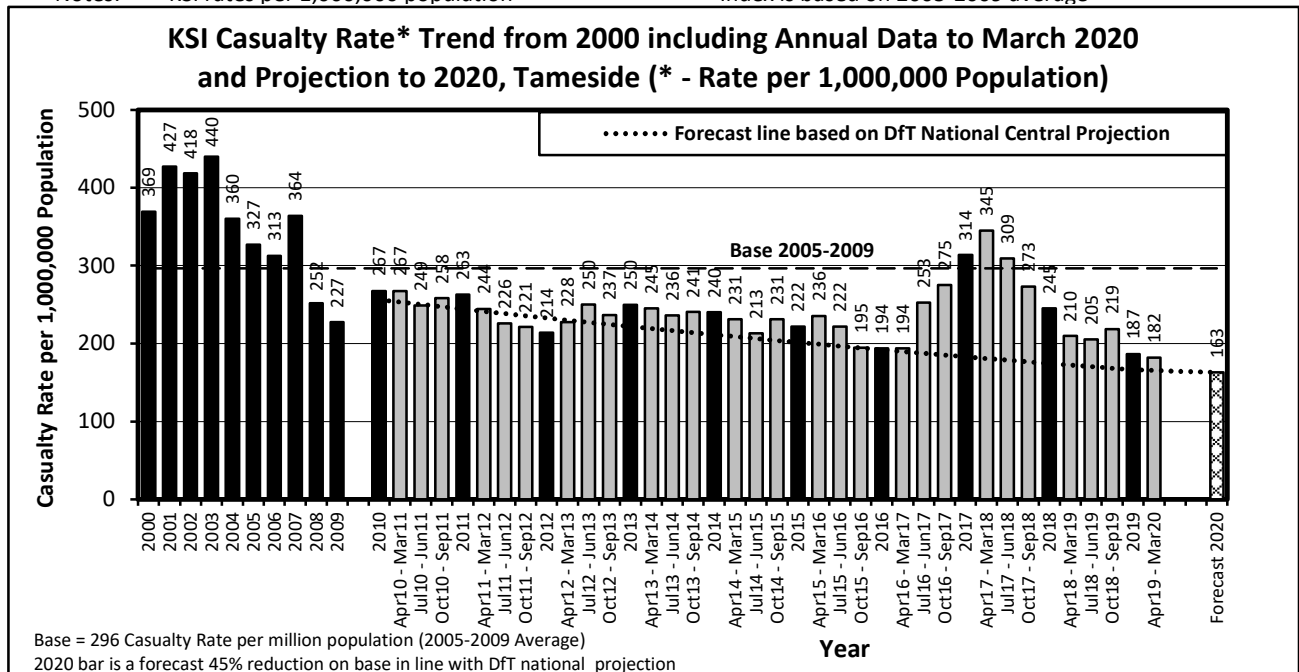
KSI Casualty Rates: Casualty Rate Trend 2000 - March 2020 and Projection to 2020

The table shows Tameside KSI casualty rates* from 2000 - March 2020 and forecast casualty reductions based on the DfT National Central Projection as outlined in the Strategic Framework for Road Safety. (*based on ONS population projections).

KSI Casualty Rate Trend 2000 - March 2020 and Projection to 2020				
Year	KSI Casualty Totals**		Index	
	Actual	Projection	Actual	Projection
2000	369			
2001	427			
2002	418			
2003	440			
2004	360			
2005	327			
2006	313			
2007	364			
2008	252			
2009	227			
2005-2009 Baseline	296		100	
2010	267	256	90	86
2011	263	244	89	82
2012	214	233	72	78
2013	250	222	84	75
2014	240	211	81	71
2015	222	201	75	68
2016	194	192	65	65
2017	314	183	106	62
2018	245	174	83	59
2019	187	166	63	56
Apr 2019-Mar 2020	182	165	61	56
2020		163		55

Notes: ** - KSI rates per 1,000,000 population

Index is based on 2005-2009 average



VISION 2020 FACTSHEET



THE SURVEYS, RESEARCH & ANALYSIS DEPARTMENT

TRAFFORD KSI CASUALTY STATISTICS

Latest 12 Months Data April 2019 to March 2020

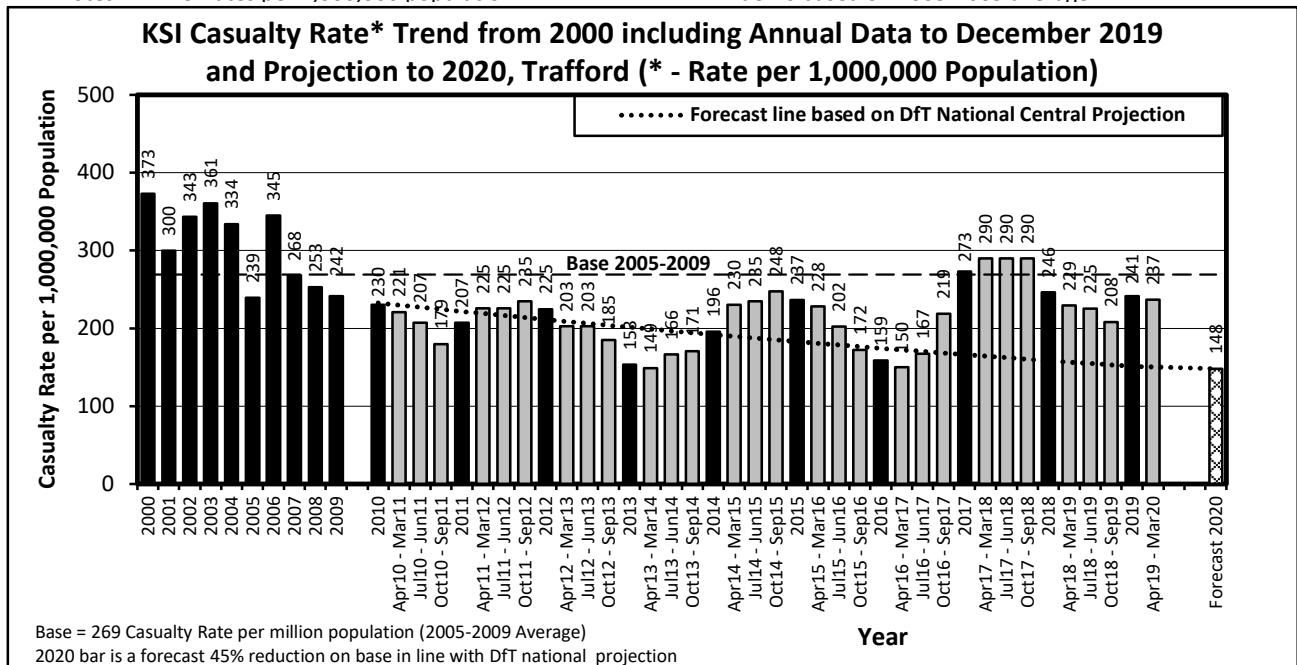
KSI Casualty Rates: Casualty Rate Trend 2000 - March 2020 and Projection to 2020

The table shows Trafford KSI casualty rates* from 2000 - March 2020 and forecast casualty reductions based on the DfT National Central Projection as outlined in the Strategic Framework for Road Safety. (*based on ONS population projections).

KSI Casualty Rate Trend 2000 - March 2020 and Projection to 2020				
Year	KSI Casualty Totals**		Index	
	Actual	Projection	Actual	Projection
2000	373			
2001	300			
2002	343			
2003	361			
2004	334			
2005	239			
2006	345			
2007	268			
2008	253			
2009	242			
2005-2009 Baseline	269		100	
2010	230	232	86	86
2011	207	222	77	82
2012	225	211	83	78
2013	153	201	57	75
2014	196	192	73	71
2015	237	183	88	68
2016	159	174	59	65
2017	273	166	101	62
2018	246	158	92	59
2019	241	151	90	56
Apr 2019-Mar 2020	237	150	88	56
2020		148		55

Notes: ** - KSI rates per 1,000,000 population

Index is based on 2005-2009 average



VISION 2020 FACTSHEET



THE SURVEYS, RESEARCH & ANALYSIS DEPARTMENT

WIGAN KSI CASUALTY STATISTICS

Latest 12 Months Data April 2019 to March 2020

KSI Casualty Rates: Casualty Rate Trend 2000 - March 2020 and Projection to 2020

The table shows Wigan KSI casualty rates* from 2000 - March 2020 and forecast casualty reductions based on the DfT National Central Projection as outlined in the Strategic Framework for Road Safety. (*based on ONS population projections).

KSI Casualty Rate Trend 2000 - March 2020 and Projection to 2020				
Year	KSI Casualty Totals**		Index	
	Actual	Projection	Actual	Projection
2000	478			
2001	415			
2002	438			
2003	396			
2004	393			
2005	424			
2006	314			
2007	324			
2008	311			
2009	316			
2005-2009 Baseline	338		100	
2010	202	292	60	86
2011	267	278	79	82
2012	233	265	69	78
2013	204	253	60	75
2014	194	241	57	71
2015	227	230	67	68
2016	199	219	59	65
2017	238	209	71	62
2018	231	199	68	59
2019	276	190	82	56
Apr 2019-Mar 2020	270	189	80	56
2020		186		55

Notes: ** - KSI rates per 1,000,000 population

Index is based on 2005-2009 average

