

VISION 2020 FACTSHEET



THE SURVEYS, RESEARCH & ANALYSIS DEPARTMENT

GREATER MANCHESTER KSI CASUALTY STATISTICS

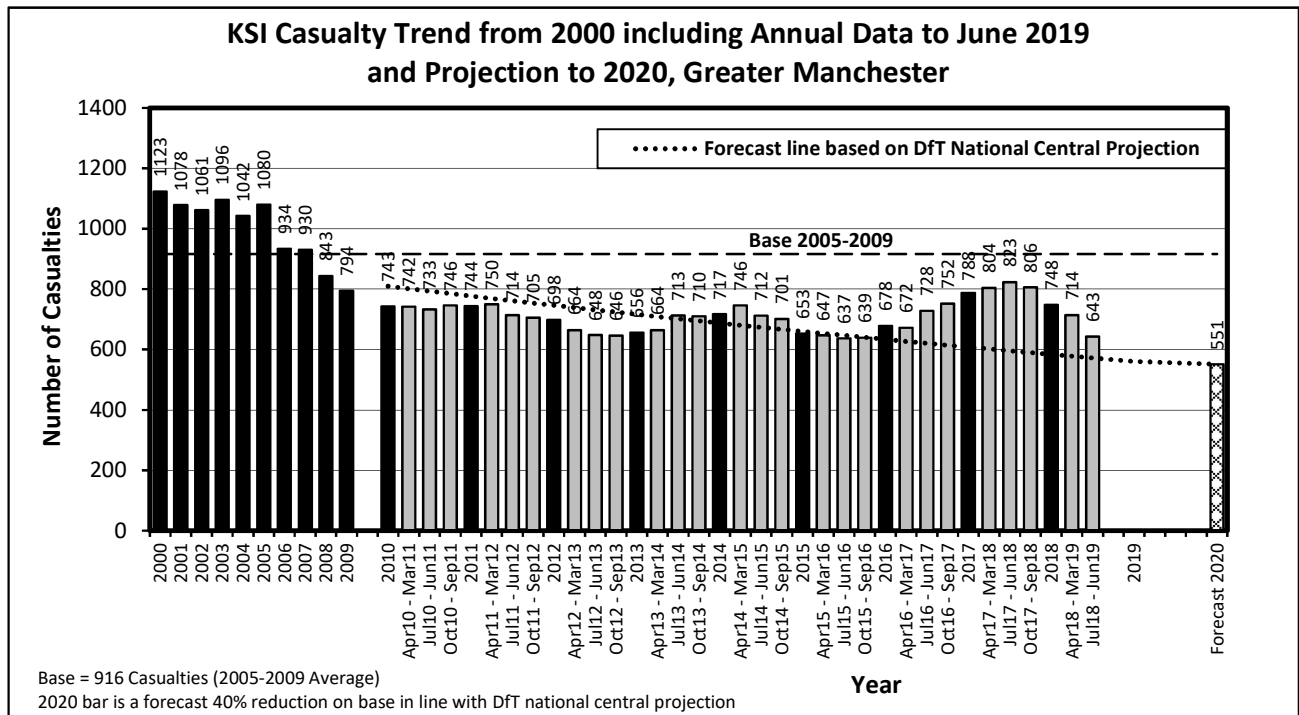
Latest 12 Months Data July 2018 to June 2019

KSI Casualties: Casualty Trend 2000 - June 2019 and Projection to 2020

The table shows Greater Manchester KSI casualties from 2000 - June 2019 and forecast casualty reductions based on the DfT National Central Projection as outlined in the Strategic Framework for Road Safety

KSI Casualty Trend 2000 - June 2019 and Projection to 2020				
Year	KSI Casualty Totals		Index	
	Actual	Projection	Actual	Projection
2000	1123			
2001	1078			
2002	1061			
2003	1096			
2004	1042			
2005	1080			
2006	934			
2007	930			
2008	843			
2009	794			
2005-2009 Baseline	916		100	
2010	743	810	81	88
2011	744	777	81	85
2012	698	746	76	81
2013	656	716	72	78
2014	717	687	78	75
2015	653	660	71	72
2016	678	634	74	69
2017	788	608	86	66
2018	748	584	82	64
Apr 2018-Mar 2019	714	578	78	63
Jul 2018-Jun 2019	643	572	70	62
2019		560		61
2020		551		60

Note: Index is based on 2005-2009 average



Progress Towards KSI Casualty Reduction Forecast by District			
District	KSI		
	Base	Jul 18 to Jun 19	Vision 2020
Bolton	94	68	57
Bury	64	38	38
Manchester	222	156	133
Oldham	78	64	47
Rochdale	71	47	42
Salford	86	63	52
Stockport	77	43	47
Tameside	64	45	38
Trafford	57	50	35
Wigan	103	69	62
Greater Manchester	916	643	551

Index of Progress Towards KSI Casualty Reduction Forecast by District			
District	KSI		
	Base	Jul 18 to Jun 19	Vision 2020
Bolton	100	72	60
Bury	100	60	60
Manchester	100	70	60
Oldham	100	82	60
Rochdale	100	67	60
Salford	100	73	60
Stockport	100	56	60
Tameside	100	71	60
Trafford	100	87	60
Wigan	100	67	60
Greater Manchester	100	70	60

Note: Base = Average 2005-2009 = 100