

# VISION 2020 FACTSHEET



THE SURVEYS, RESEARCH & ANALYSIS DEPARTMENT

## GREATER MANCHESTER KSI CASUALTY STATISTICS

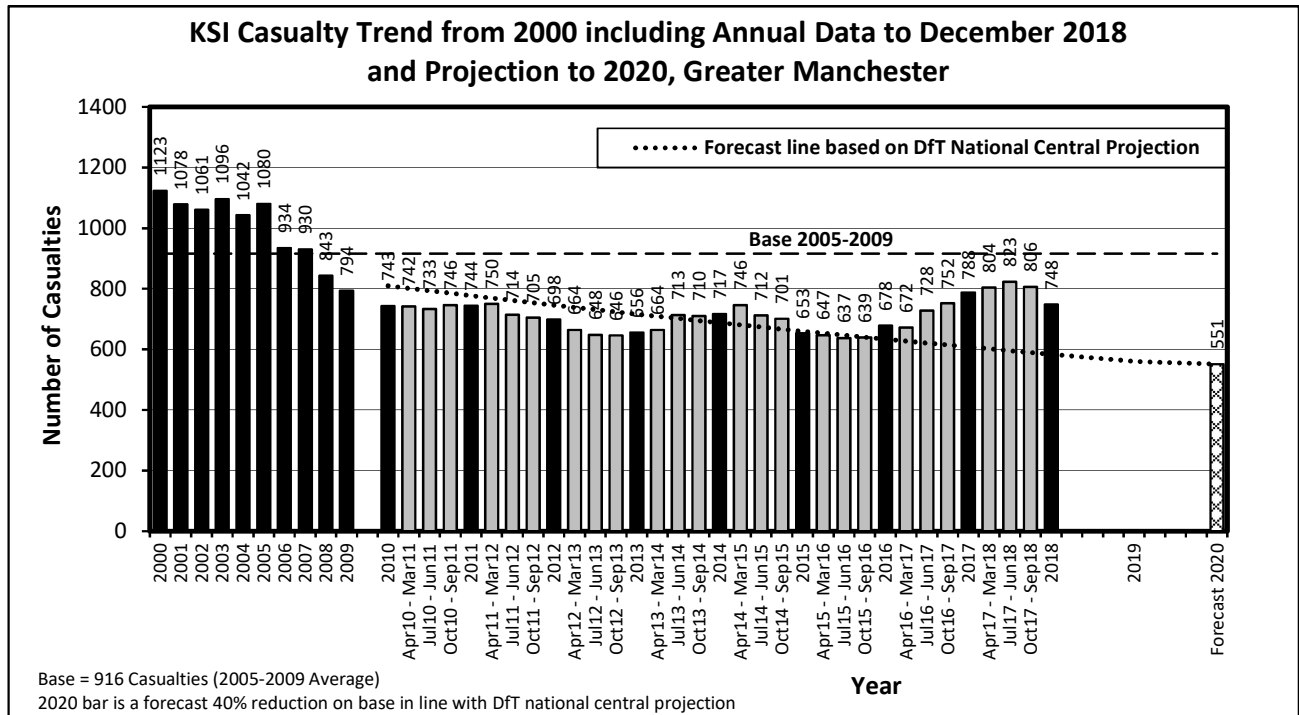
Latest 12 Months Data January 2018 to December 2018

### KSI Casualties: Casualty Trend 2000 - December 2018 and Projection to 2020

The table shows Greater Manchester KSI casualties from 2000 - December 2018 and forecast casualty reductions based on the DfT National Central Projection as outlined in the Strategic Framework for Road Safety

KSI Casualty Trend 2000 - December 2018 and Projection to 2020				
Year	KSI Casualty Totals		Index	
	Actual	Projection	Actual	Projection
2000	1123			
2001	1078			
2002	1061			
2003	1096			
2004	1042			
2005	1080			
2006	934			
2007	930			
2008	843			
2009	794			
2005-2009 Baseline	916		100	
2010	743	810	81	88
2011	744	777	81	85
2012	698	746	76	81
2013	656	716	72	78
2014	717	687	78	75
2015	653	660	71	72
2016	678	634	74	69
2017	788	608	86	66
2018	748	584	82	64
2019		560		61
2020		551		60

Note: Index is based on 2005-2009 average



<b>Progress Towards KSI Casualty Reduction Forecast by District</b>			
<b>District</b>	<b>KSI</b>		
	<b>Base</b>	<b>Jan 18 to Dec 18</b>	<b>Vision 2020</b>
Bolton	94	82	57
Bury	64	41	38
Manchester	222	188	133
Oldham	78	56	47
Rochdale	71	49	42
Salford	86	80	52
Stockport	77	64	47
Tameside	64	55	38
Trafford	57	58	35
Wigan	103	75	62
<b>Greater Manchester</b>	<b>916</b>	<b>748</b>	<b>551</b>

<b>Index of Progress Towards KSI Casualty Reduction Forecast by District</b>			
<b>District</b>	<b>KSI</b>		
	<b>Base</b>	<b>Jan 18 to Dec 18</b>	<b>Vision 2020</b>
Bolton	100	87	60
Bury	100	64	60
Manchester	100	85	60
Oldham	100	72	60
Rochdale	100	69	60
Salford	100	93	60
Stockport	100	83	60
Tameside	100	86	60
Trafford	100	101	60
Wigan	100	73	60
<b>Greater Manchester</b>	<b>100</b>	<b>82</b>	<b>60</b>

Note: Base = Average 2005-2009 = 100