

VISION 2020 FACTSHEET



THE SURVEYS, RESEARCH & ANALYSIS DEPARTMENT

BOLTON KSI CASUALTY STATISTICS

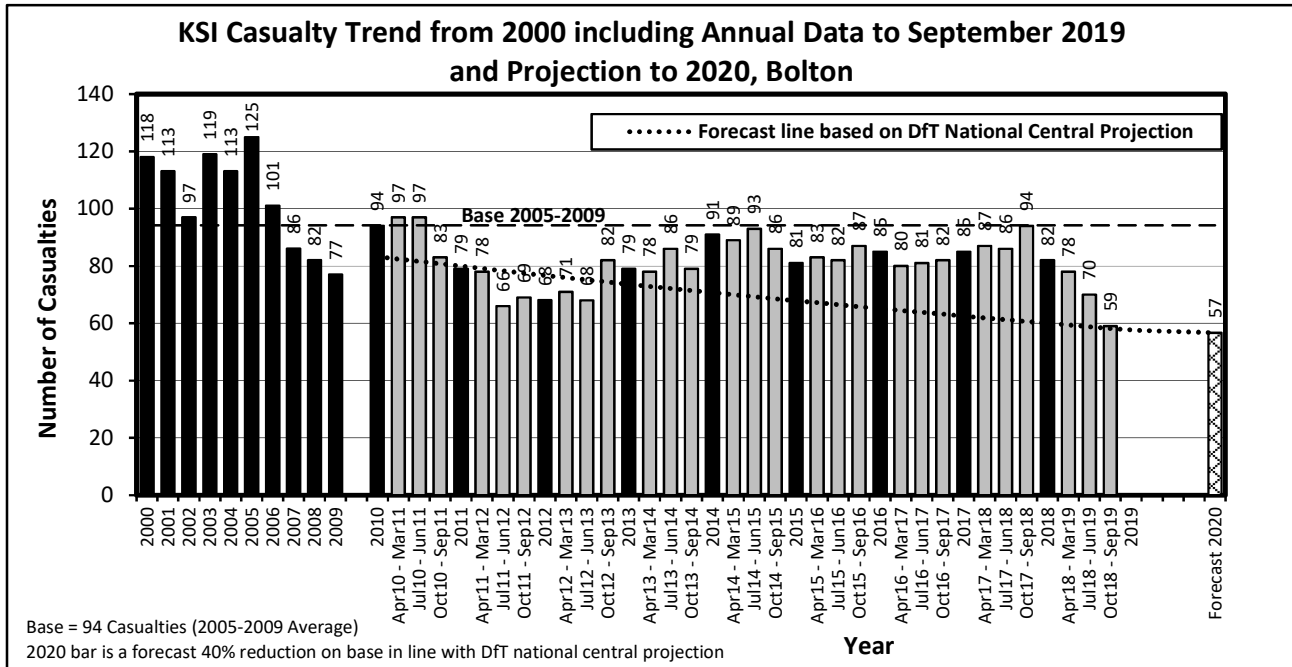
Latest 12 Months Data October 2018 to September 2019

KSI Casualties: Casualty Trend 2000 - September 2019 and Projection to 2020

The table shows Bolton KSI casualties from 2000 - September 2019 and forecast casualty reductions based on the DfT National Central Projection as outlined in the Strategic Framework for Road Safety

KSI Casualty Trend 2000 - September 2019 and Projection to 2020				
Year	KSI Casualty Totals		Index	
	Actual	Projection	Actual	Projection
2000	118			
2001	113			
2002	97			
2003	119			
2004	113			
2005	125			
2006	101			
2007	86			
2008	82			
2009	77			
2005-2009 Baseline	94		100	
2010	94	83	100	88
2011	79	80	84	85
2012	68	77	72	81
2013	79	74	84	78
2014	91	71	97	75
2015	81	68	86	72
2016	85	65	90	69
2017	85	63	90	66
2018	82	60	87	64
Apr 2018-Mar 2019	78	59	83	63
Jul 2018-Jun 2019	70	59	74	62
Oct 2018-Sep 2019	59	58	63	62
2019		58		61
2020		57		60

Note: Index is based on 2005-2009 average



VISION 2020 FACTSHEET



THE SURVEYS, RESEARCH & ANALYSIS DEPARTMENT

BURY KSI CASUALTY STATISTICS

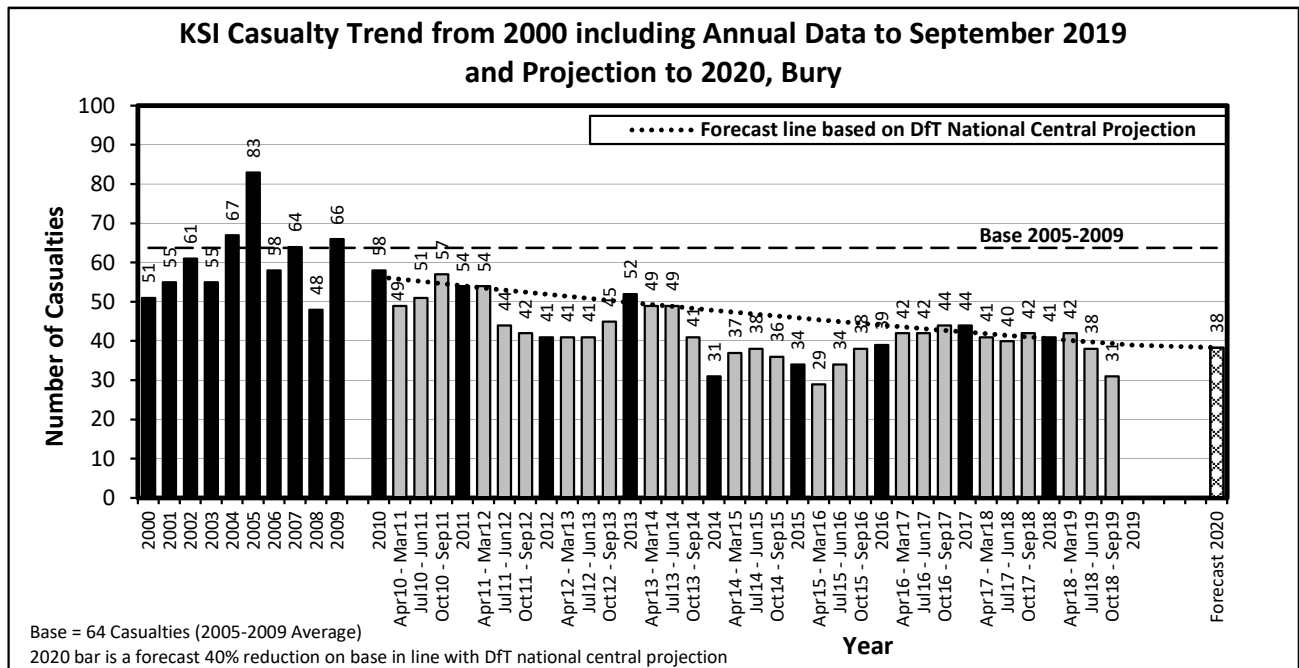
Latest 12 Months Data October 2018 to September 2019

KSI Casualties: Casualty Trend 2000 - September 2019 and Projection to 2020

The table shows Bury KSI casualties from 2000 - September 2019 and forecast casualty reductions based on the DfT National Central Projection as outlined in the Strategic Framework for Road Safety

KSI Casualty Trend 2000 - September 2019 and Projection to 2020				
Year	KSI Casualty Totals		Index	
	Actual	Projection	Actual	Projection
2000	51			
2001	55			
2002	61			
2003	55			
2004	67			
2005	83			
2006	58			
2007	64			
2008	48			
2009	66			
2005-2009 Baseline	64		100	
2010	58	56	91	88
2011	54	54	85	85
2012	41	52	64	81
2013	52	50	82	78
2014	31	48	49	75
2015	34	46	53	72
2016	39	44	61	69
2017	44	42	69	66
2018	41	41	64	64
Apr 2018-Mar 2019	42	40	66	63
Jul 2018-Jun 2019	38	40	60	62
Oct 2018-Sep 2019	31	39	49	62
2019		39		61
2020		38		60

Note: Index is based on 2005-2009 average



VISION 2020 FACTSHEET



THE SURVEYS, RESEARCH & ANALYSIS DEPARTMENT

MANCHESTER KSI CASUALTY STATISTICS

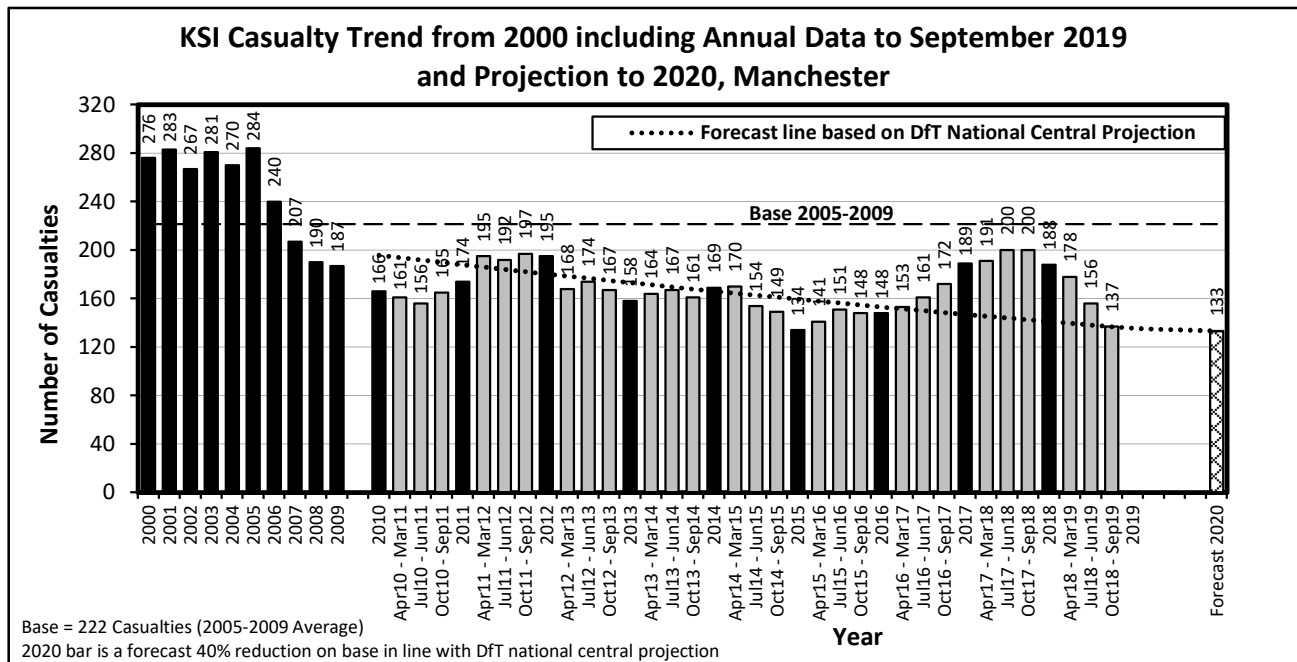
Latest 12 Months Data October 2018 to September 2019

KSI Casualties: Casualty Trend 2000 - September 2019 and Projection to 2020

The table shows Manchester KSI casualties from 2000 - September 2019 and forecast casualty reductions based on the DfT National Central Projection as outlined in the Strategic Framework for Road Safety

KSI Casualty Trend 2000 - September 2019 and Projection to 2020				
Year	KSI Casualty Totals		Index	
	Actual	Projection	Actual	Projection
2000	276			
2001	283			
2002	267			
2003	281			
2004	270			
2005	284			
2006	240			
2007	207			
2008	190			
2009	187			
2005-2009 Baseline	222		100	
2010	166	196	75	88
2011	174	188	79	85
2012	195	180	88	81
2013	158	173	71	78
2014	169	166	76	75
2015	134	160	60	72
2016	148	153	67	69
2017	189	147	85	66
2018	188	141	85	64
Apr 2018-Mar 2019	178	140	80	63
Jul 2018-Jun 2019	156	138	70	62
Oct 2018-Sep 2019	137	137	62	62
2019		136		61
2020		133		60

Note: Index is based on 2005-2009 average



VISION 2020 FACTSHEET



THE SURVEYS, RESEARCH & ANALYSIS DEPARTMENT

OLDHAM KSI CASUALTY STATISTICS

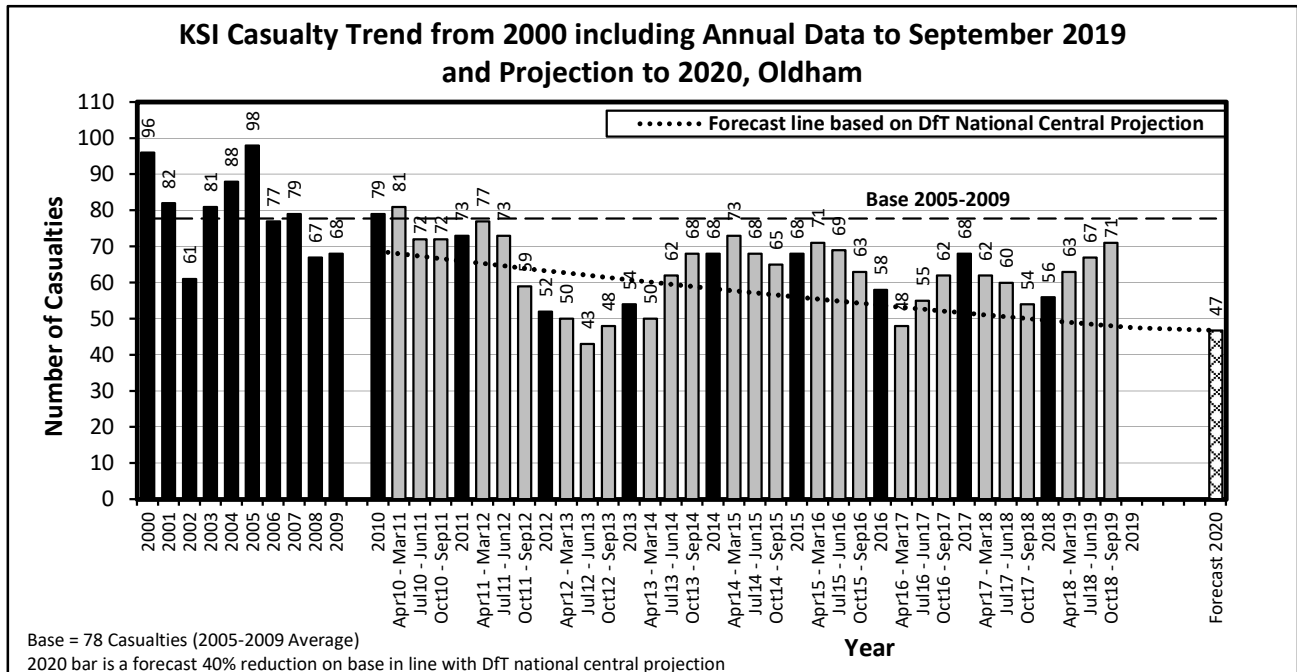
Latest 12 Months Data October 2018 to September 2019

KSI Casualties: Casualty Trend 2000 - September 2019 and Projection to 2020

The table shows Oldham KSI casualties from 2000 - September 2019 and forecast casualty reductions based on the Dft National Central Projection as outlined in the Strategic Framework for Road Safety

KSI Casualty Trend 2000 - September 2019 and Projection to 2020				
Year	KSI Casualty Totals		Index	
	Actual	Projection	Actual	Projection
2000	96			
2001	82			
2002	61			
2003	81			
2004	88			
2005	98			
2006	77			
2007	79			
2008	67			
2009	68			
2005-2009 Baseline	78		100	
2010	79	69	102	88
2011	73	66	94	85
2012	52	63	67	81
2013	54	61	69	78
2014	68	58	87	75
2015	68	56	87	72
2016	58	54	75	69
2017	68	52	87	66
2018	56	50	72	64
Apr 2018-Mar 2019	63	49	81	63
Jul 2018-Jun 2019	67	49	86	62
Oct 2018-Sep 2019	71	48	91	62
2019		48		61
2020		47		60

Note: Index is based on 2005-2009 average



VISION 2020 FACTSHEET



THE SURVEYS, RESEARCH & ANALYSIS DEPARTMENT

ROCHDALE KSI CASUALTY STATISTICS

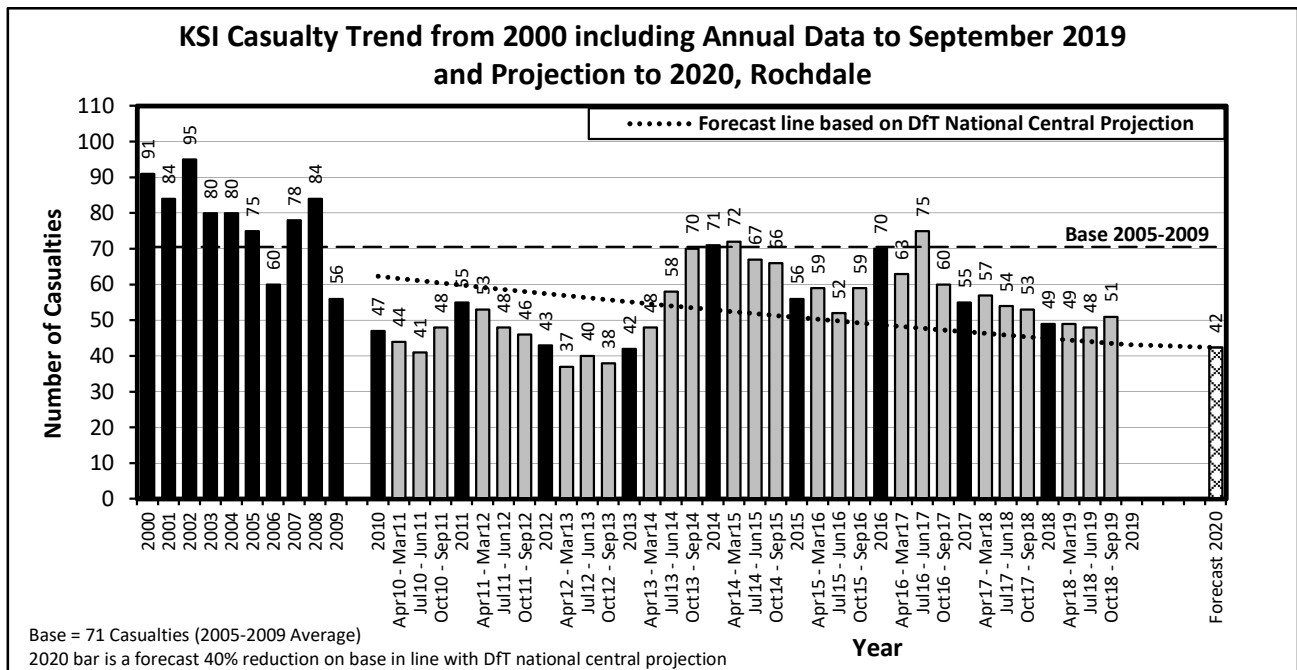
Latest 12 Months Data October 2018 to September 2019

KSI Casualties: Casualty Trend 2000 - September 2019 and Projection to 2020

The table shows Rochdale KSI casualties from 2000 - September 2019 and forecast casualty reductions based on the DfT National Central Projection as outlined in the Strategic Framework for Road Safety

KSI Casualty Trend 2000 - September 2019 and Projection to 2020				
Year	KSI Casualty Totals		Index	
	Actual	Projection	Actual	Projection
2000	91			
2001	84			
2002	95			
2003	80			
2004	80			
2005	75			
2006	60			
2007	78			
2008	84			
2009	56			
2005-2009 Baseline	71		100	
2010	47	62	67	88
2011	55	60	78	85
2012	43	57	61	81
2013	42	55	59	78
2014	71	53	101	75
2015	56	51	79	72
2016	70	49	99	69
2017	55	47	78	66
2018	49	45	69	64
Apr 2018-Mar 2019	49	45	69	63
Jul 2018-Jun 2019	48	44	68	62
Oct 2018-Sep 2019	51	44	72	62
2019		43		61
2020		42		60

Note: Index is based on 2005-2009 average



VISION 2020 FACTSHEET



THE SURVEYS, RESEARCH & ANALYSIS DEPARTMENT

SALFORD KSI CASUALTY STATISTICS

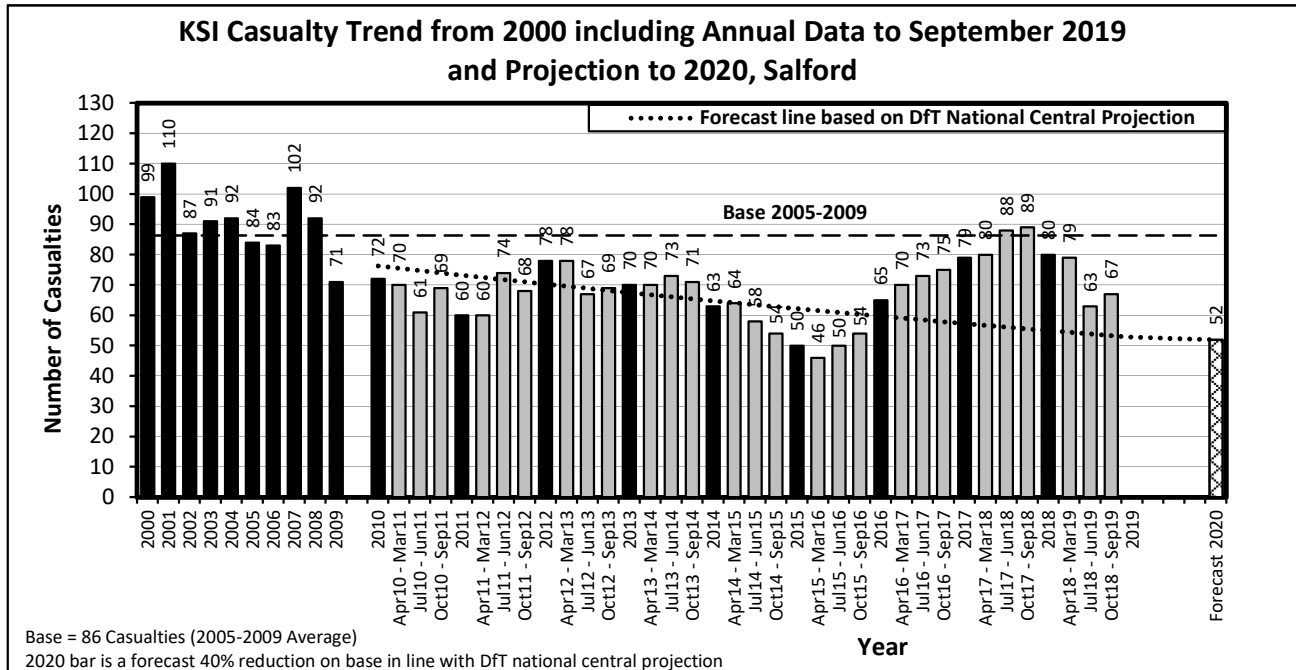
Latest 12 Months Data October 2018 to September 2019

KSI Casualties: Casualty Trend 2000 - September 2019 and Projection to 2020

The table shows Salford KSI casualties from 2000 - September 2019 and forecast casualty reductions based on the DfT National Central Projection as outlined in the Strategic Framework for Road Safety

KSI Casualty Trend 2000 - September 2019 and Projection to 2020				
Year	KSI Casualty Totals		Index	
	Actual	Projection	Actual	Projection
2000	99			
2001	110			
2002	87			
2003	91			
2004	92			
2005	84			
2006	83			
2007	102			
2008	92			
2009	71			
2005-2009 Baseline	86		100	
2010	72	76	83	88
2011	60	73	69	85
2012	78	70	90	81
2013	70	68	81	78
2014	63	65	73	75
2015	50	62	58	72
2016	65	60	75	69
2017	79	57	91	66
2018	80	55	93	64
Apr 2018-Mar 2019	79	54	91	63
Jul 2018-Jun 2019	63	54	73	62
Oct 2018-Sep 2019	67	53	78	62
2019		53		61
2020		52		60

Note: Index is based on 2005-2009 average



VISION 2020 FACTSHEET



THE SURVEYS, RESEARCH & ANALYSIS DEPARTMENT

STOCKPORT KSI CASUALTY STATISTICS

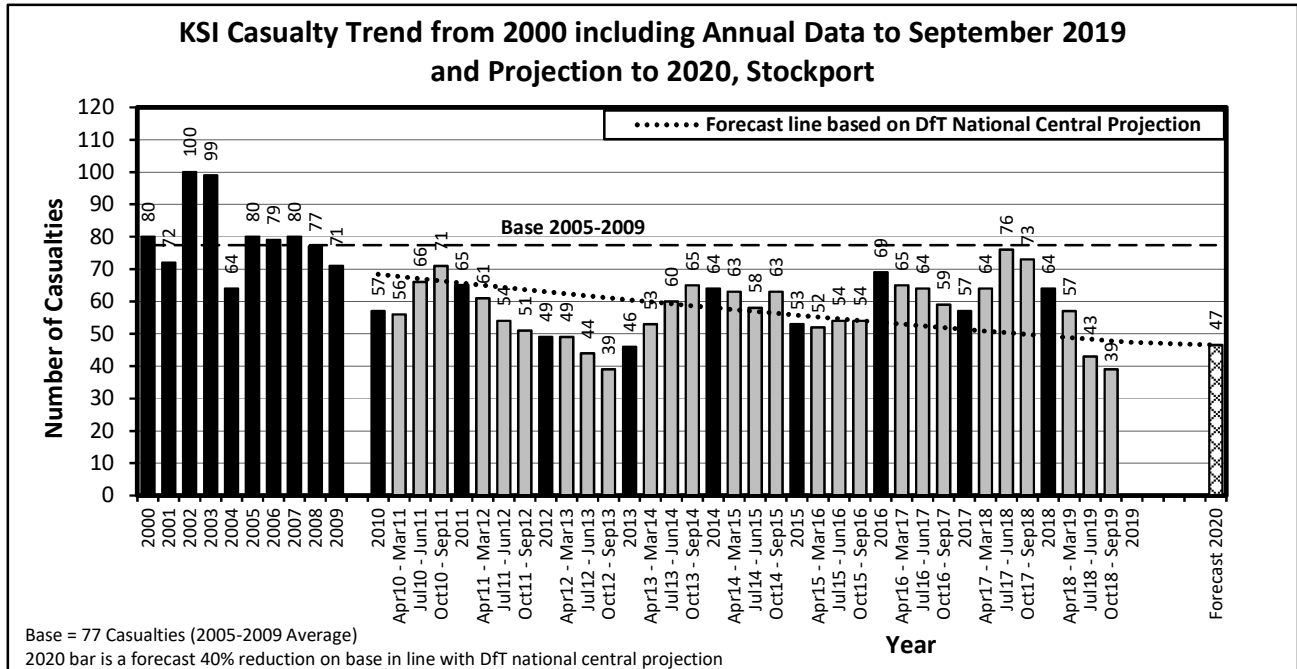
Latest 12 Months Data October 2018 to September 2019

KSI Casualties: Casualty Trend 2000 - September 2019 and Projection to 2020

The table shows Stockport KSI casualties from 2000 - September 2019 and forecast casualty reductions based on the DfT National Central Projection as outlined in the Strategic Framework for Road Safety

KSI Casualty Trend 2000 - September 2019 and Projection to 2020				
Year	KSI Casualty Totals		Index	
	Actual	Projection	Actual	Projection
2000	80			
2001	72			
2002	100			
2003	99			
2004	64			
2005	80			
2006	79			
2007	80			
2008	77			
2009	71			
2005-2009 Baseline	77		100	
2010	57	68	74	88
2011	65	66	84	85
2012	49	63	63	81
2013	46	61	59	78
2014	64	58	83	75
2015	53	56	68	72
2016	69	54	89	69
2017	57	51	74	66
2018	64	49	83	64
Apr 2018-Mar 2019	57	49	74	63
Jul 2018-Jun 2019	43	48	56	62
Oct 2018-Sep 2019	39	48	50	62
2019		47		61
2020		47		60

Note: Index is based on 2005-2009 average



VISION 2020 FACTSHEET



THE SURVEYS, RESEARCH & ANALYSIS DEPARTMENT

TAMESIDE KSI CASUALTY STATISTICS

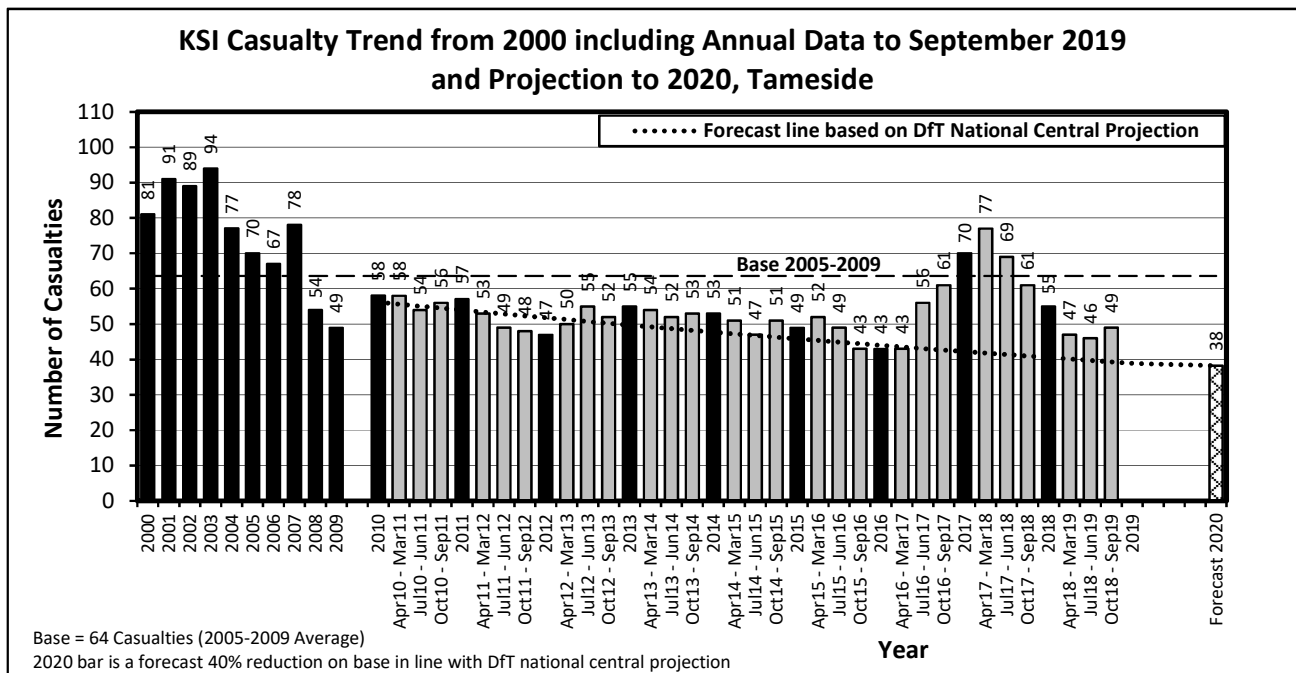
Latest 12 Months Data October 2018 to September 2019

KSI Casualties: Casualty Trend 2000 - September 2019 and Projection to 2020

The table shows Tameside KSI casualties from 2000 - September 2019 and forecast casualty reductions based on the DfT National Central Projection as outlined in the Strategic Framework for Road Safety

KSI Casualty Trend 2000 - September 2019 and Projection to 2020				
Year	KSI Casualty Totals		Index	
	Actual	Projection	Actual	Projection
2000	81			
2001	91			
2002	89			
2003	94			
2004	77			
2005	70			
2006	67			
2007	78			
2008	54			
2009	49			
2005-2009 Baseline	64		100	
2010	58	56	91	88
2011	57	54	90	85
2012	47	52	74	81
2013	55	50	86	78
2014	53	48	83	75
2015	49	46	77	72
2016	43	44	68	69
2017	70	42	110	66
2018	55	41	86	64
Apr 2018-Mar 2019	47	40	74	63
Jul 2018-Jun 2019	46	40	72	62
Oct 2018-Sep 2019	49	39	77	62
2019		39		61
2020		38		60

Note: Index is based on 2005-2009 average



VISION 2020 FACTSHEET



THE SURVEYS, RESEARCH & ANALYSIS DEPARTMENT

TRAFFORD KSI CASUALTY STATISTICS

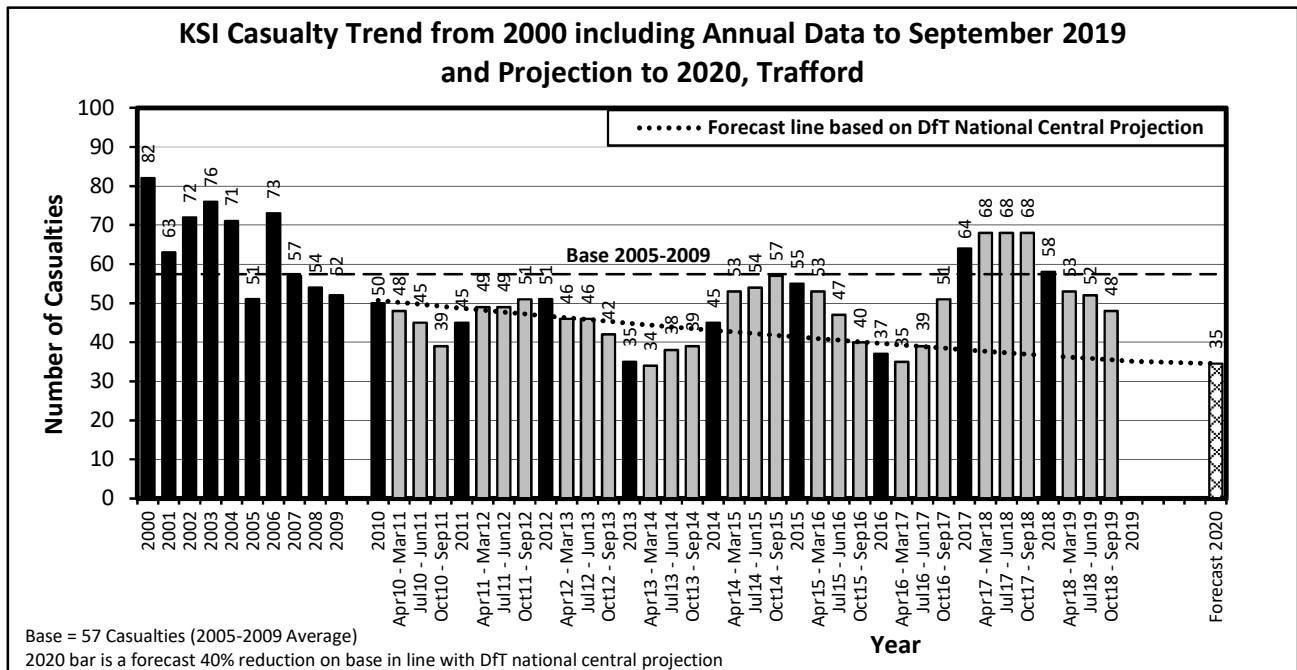
Latest 12 Months Data October 2018 to September 2019

KSI Casualties: Casualty Trend 2000 - September 2019 and Projection to 2020

The table shows Trafford KSI casualties from 2000 - September 2019 and forecast casualty reductions based on the DfT National Central Projection as outlined in the Strategic Framework for Road Safety

KSI Casualty Trend 2000 - September 2019 and Projection to 2020				
Year	KSI Casualty Totals		Index	
	Actual	Projection	Actual	Projection
2000	82			
2001	63			
2002	72			
2003	76			
2004	71			
2005	51			
2006	73			
2007	57			
2008	54			
2009	52			
2005-2009 Baseline	57		100	
2010	50	51	87	88
2011	45	49	78	85
2012	51	47	89	81
2013	35	45	61	78
2014	45	43	78	75
2015	55	41	96	72
2016	37	40	64	69
2017	64	38	111	66
2018	58	37	101	64
Apr 2018-Mar 2019	53	36	92	63
Jul 2018-Jun 2019	52	36	91	62
Oct 2018-Sep 2019	48	35	84	62
2019		35		61
2020		35		60

Note: Index is based on 2005-2009 average



VISION 2020 FACTSHEET



THE SURVEYS, RESEARCH & ANALYSIS DEPARTMENT

WIGAN KSI CASUALTY STATISTICS

Latest 12 Months Data October 2018 to September 2019

KSI Casualties: Casualty Trend 2000 - September 2019 and Projection to 2020

The table shows Wigan KSI casualties from 2000 - September 2019 and forecast casualty reductions based on the DfT National Central Projection as outlined in the Strategic Framework for Road Safety

KSI Casualty Trend 2000 - September 2019 and Projection to 2020				
Year	KSI Casualty Totals		Index	
	Actual	Projection	Actual	Projection
2000	149			
2001	125			
2002	132			
2003	120			
2004	120			
2005	130			
2006	96			
2007	99			
2008	95			
2009	97			
2005-2009 Baseline	103		100	
2010	62	91	60	88
2011	82	88	79	85
2012	74	84	72	81
2013	65	81	63	78
2014	62	78	60	75
2015	73	74	71	72
2016	64	71	62	69
2017	77	69	74	66
2018	75	66	73	64
Apr 2018-Mar 2019	68	65	66	63
Jul 2018-Jun 2019	70	65	68	62
Oct 2018-Sep 2019	74	64	72	62
2019		63		61
2020		62		60

Note: Index is based on 2005-2009 average

