

VISION 2020 FACTSHEET



**HIGHWAYS FORECASTING AND
ANALYTICAL SERVICES**

GREATER MANCHESTER KSI CASUALTY STATISTICS

Latest 12 Months Data October 2013 to September 2014

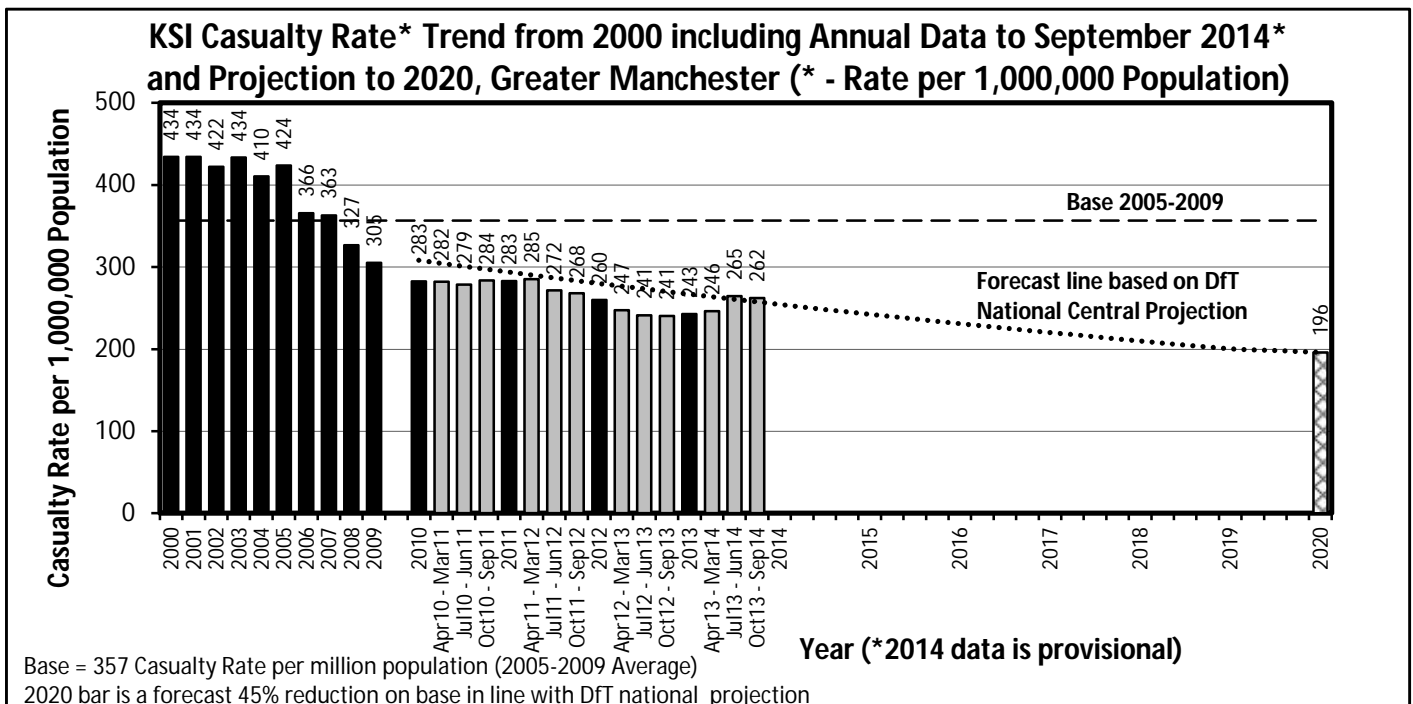
KSI Casualty Rates: Casualty Rate Trend 2000 - September 2014 and Projection to 2020

The table shows Greater Manchester KSI casualty rates* from 2000 - September 2014 and forecast casualty reductions based on the DfT National Central Projection as outlined in the Strategic Framework for Road Safety. (*based on ONS population projections).

KSI Casualty Rate Trend 2000 - September 2014 and Projection to 2020				
Year	KSI Casualty Rates**		Index	
	Actual	Projection	Actual	Projection
2000	434			
2001	434			
2002	422			
2003	434			
2004	410			
2005	424			
2006	366			
2007	363			
2008	327			
2009	305			
2005-2009 Baseline	357		100	
2010	283	308	79	86
2011	283	294	79	82
2012	260	280	73	78
2013	243	267	68	75
Apr 2013-Mar 2014	246	264	69	74
Jul 2013-Jun 2014	265	261	74	73
Oct 2013-Sep 2014	262	257	74	72
2014		254		71
2015		242		68
2016		231		65
2017		220		62
2018		210		59
2019		200		56
2020		196		55

Notes: ** - KSI rates per 1,000,000 population

Index is based on 2005-2009 average



Progress Towards KSI Casualty Rate* Reduction Forecast by District			
KSI Casualty Rates* (Progress Towards KPI 11)			
District	Base	Oct 13 to Sep 14**	Vision 2020
Bolton	357	283	196
Bury	349	226	192
Manchester	480	313	264
Oldham	355	297	195
Rochdale	343	330	189
Salford	392	304	216
Stockport	275	222	151
Tameside	296	245	163
Trafford	269	171	148
Wigan	338	198	186
Greater Manchester	357	262	196

Index of Progress Towards KSI Casualty Rate* Reduction Forecast by District			
KSI Casualty Rates* (Progress Towards KPI 11)			
District	Base	Oct 13 to Sep 14**	Vision 2020
Bolton	100	79	55
Bury	100	65	55
Manchester	100	65	55
Oldham	100	84	55
Rochdale	100	96	55
Salford	100	77	55
Stockport	100	81	55
Tameside	100	83	55
Trafford	100	63	55
Wigan	100	58	55
Greater Manchester	100	74	55

Notes: Base = Average 2005-2009 = 100 & Year 2014 data so far is provisional

* - KSI rates per 1,000,000 resident population

** - Uses figures provided by ONS for the mid-year estimate of population for 2012