

LTP2 FACTSHEET



HIGHWAYS FORECASTING AND ANALYTICAL SERVICES

GREATER MANCHESTER KSI CASUALTY STATISTICS
April 2008 - March 2011

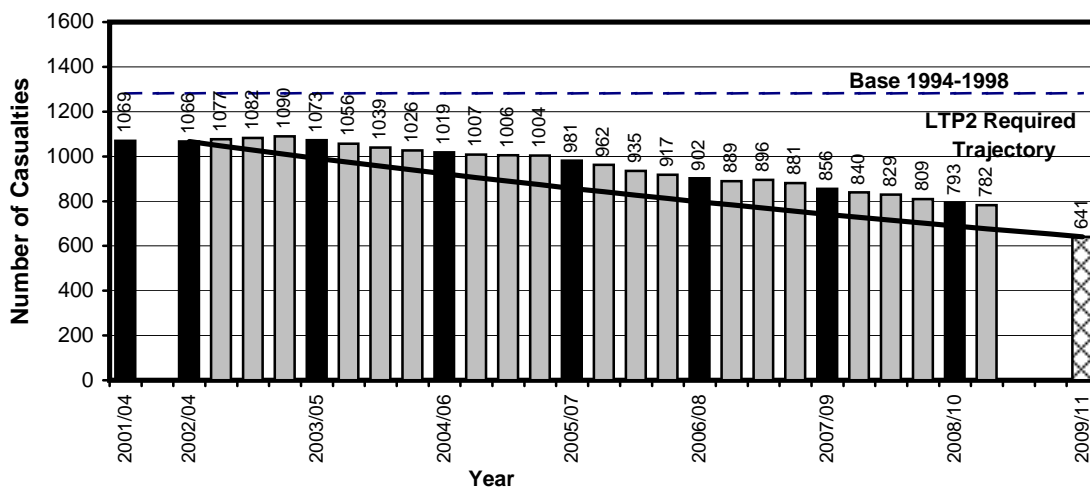
KSI Casualties: 50% casualty reduction on 1994-1998 baseline by 2010

Greater Manchester KSI Casualties, Latest 3-Year Average, from April 08 to March 11

Annual Average Target (LTP2) and Actual Averages for KSI Casualties				
Year	Annual Average		Index	
	Trajectory	Actual	Trajectory	Actual
1994-1998 baseline		1281		100
2001-2004: baseline		1069		83
2003: average 2002/2003/2004	1066	1066	83	83
2004: average 2003/2004/2005	991	1073	77	84
2005: average 2004/2005/2006	922	1019	72	80
2006: average 2005/2006/2007	857	981	67	77
2007: average 2006/2007/2008	797	902	62	70
2008: average 2007/2008/2009	741	856	58	67
2009: average 2008/2009/2010	689	793	54	62
<i>Average Apr 08-Mar 11</i>	677	782	53	61
Target 2010: average 2009/2010/2011	641		50	

Note: The casualties for the target year will not be known until February/March 2012 (when the full 2011 data is available)

**Annual Average Target (LTP2) and Actual Averages for KSI Casualties,
Latest 3-Year Average April 2008 - March 2011, Greater Manchester**



Base = 1281 Casualties (1994-1998 Average)
2009/11 bar shows target set at 50% reduction on base

LTP2 FACTSHEET



HIGHWAYS FORECASTING AND ANALYTICAL SERVICES

GREATER MANCHESTER CHILD KSI CASUALTY STATISTICS
April 2008 - March 2011

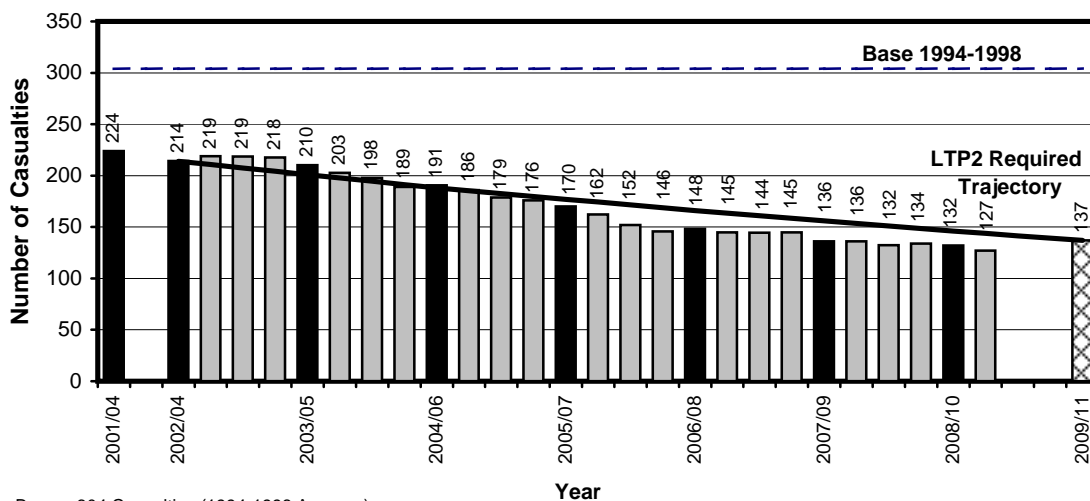
Child KSI Casualties: 55% casualty reduction on 1994-1998 baseline by 2010

Greater Manchester KSI Casualties, Latest 3-Year Average, from April 08 to March 11

Annual Average Target (LTP2) and Actual Averages for Child KSI Casualties				
Year	Annual Average		Index	
	Trajectory	Actual	Trajectory	Actual
1994-1998 baseline		304		100
2001-2004: baseline		224		74
2003: average 2002/2003/2004	214	214	70	70
2004: average 2003/2004/2005	201	210	66	69
2005: average 2004/2005/2006	188	191	62	63
2006: average 2005/2006/2007	177	170	58	56
2007: average 2006/2007/2008	166	148	55	49
2008: average 2007/2008/2009	156	136	51	45
2009: average 2008/2009/2010	146	132	48	43
<i>Average Apr 08-Mar 11</i>	144	127	47	42
Target 2010: average 2009/2010/2011	137		45	

Note: The casualties for the target year will not be known until February/March 2012 (when the full 2011 data is available)

Annual Average Target (LTP2) and Actual Averages for Child KSI Casualties, Latest 3-Year Average April 2008 - March 2011, Greater Manchester



Base = 304 Casualties (1994-1998 Average)
2009/11 bar shows target set at 55% reduction on base

LTP2 FACTSHEET



HIGHWAYS FORECASTING AND ANALYTICAL SERVICES

Greater Manchester Casualty Statistics, March 2011

Progress Towards LTP2 Targets by District						
District	KSI			Child KSI		
	Base	Ave. Apr 08 to Mar 11	Target (2009-11)	Base	Ave. Apr 08 to Mar 11	Target (2009-11)
Bolton	136	84	68	36	17	16
Bury	72	58	36	15	9	7
Manchester	294	174	147	71	27	32
Oldham	109	72	54	29	16	13
Rochdale	107	61	53	28	8	13
Salford	126	75	63	25	9	11
Stockport	111	67	55	16	8	7
Tameside	106	55	53	31	12	14
Trafford	74	50	37	18	6	8
Wigan	147	87	73	37	15	17
Greater Manchester	1281	782	641	304	127	137

Index of Progress Towards LTP2 Targets by District						
District	KSI			Child KSI		
	Base	Ave. Apr 08 to Mar 11	Target (2009-11)	Base	Ave. Apr 08 to Mar 11	Target (2009-11)
Bolton	100	61	50	100	46	45
Bury	100	81	50	100	59	45
Manchester	100	59	50	100	38	45
Oldham	100	66	50	100	57	45
Rochdale	100	57	50	100	30	45
Salford	100	60	50	100	37	45
Stockport	100	60	50	100	49	45
Tameside	100	52	50	100	40	45
Trafford	100	67	50	100	32	45
Wigan	100	59	50	100	40	45
Greater Manchester	100	61	50	100	42	45

Note: Base = Average 1994-1998 = 100