

## LTP2 FACTSHEET



### HIGHWAYS FORECASTING AND ANALYTICAL SERVICES

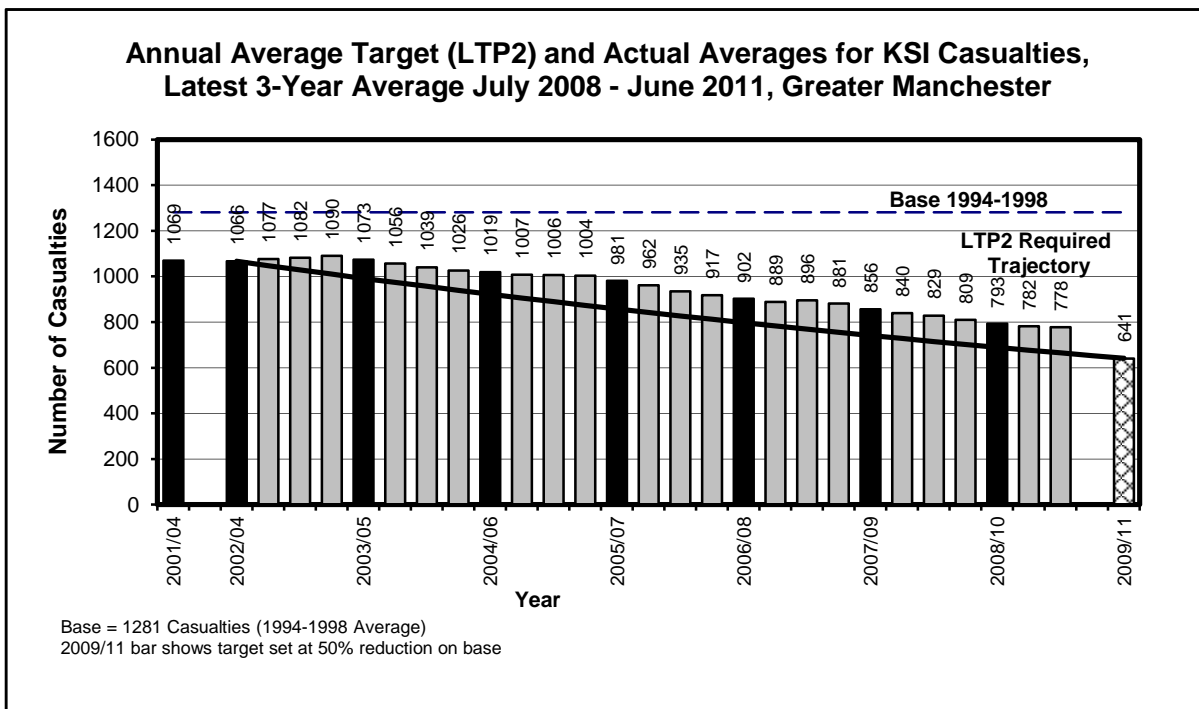
GREATER MANCHESTER KSI CASUALTY STATISTICS  
July 2008 - June 2011

#### KSI Casualties: 50% casualty reduction on 1994-1998 baseline by 2010

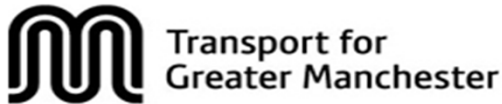
Greater Manchester KSI Casualties, Latest 3-Year Average, from July 08 to June 11

Annual Average Target (LTP2) and Actual Averages for KSI Casualties				
Year	Annual Average		Index	
	Trajectory	Actual	Trajectory	Actual
1994-1998 baseline		1281		100
2001-2004: baseline		1069		83
2003: average 2002/2003/2004	1066	1066	83	83
2004: average 2003/2004/2005	991	1073	77	84
2005: average 2004/2005/2006	922	1019	72	80
2006: average 2005/2006/2007	857	981	67	77
2007: average 2006/2007/2008	797	902	62	70
2008: average 2007/2008/2009	741	856	58	67
2009: average 2008/2009/2010	689	793	54	62
<i>Average Apr 08-Mar 11</i>	677	782	53	61
<i>Average Jul 08-Jun 11</i>	665	778	52	61
Target 2010: average 2009/2010/2011	641		50	

Note: The casualties for the target year will not be known until February/March 2012 (when the full 2011 data is available)



## LTP2 FACTSHEET



### HIGHWAYS FORECASTING AND ANALYTICAL SERVICES

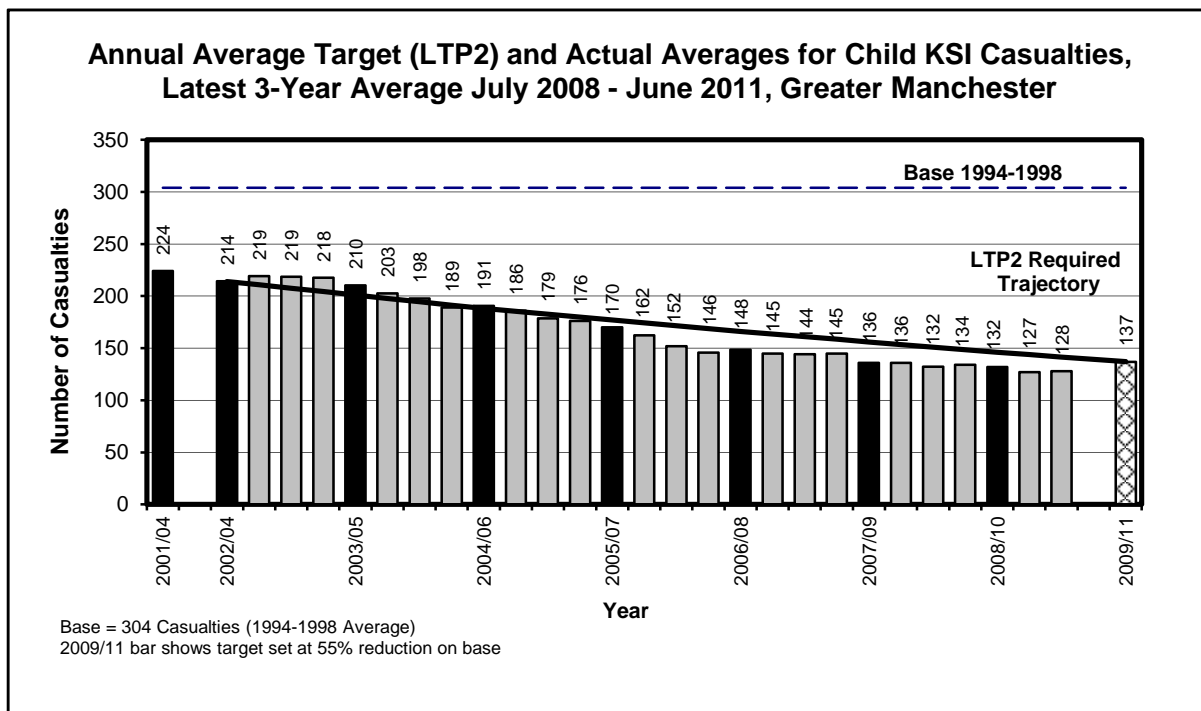
GREATER MANCHESTER CHILD KSI CASUALTY STATISTICS  
July 2008 - June 2011

### Child KSI Casualties: 55% casualty reduction on 1994-1998 baseline by 2010

Greater Manchester KSI Casualties, Latest 3-Year Average, from July 08 to June 11

Annual Average Target (LTP2) and Actual Averages for Child KSI Casualties				
Year	Annual Average		Index	
	Trajectory	Actual	Trajectory	Actual
1994-1998 baseline		304		100
2001-2004: baseline		224		74
2003: average 2002/2003/2004	214	214	70	70
2004: average 2003/2004/2005	201	210	66	69
2005: average 2004/2005/2006	188	191	62	63
2006: average 2005/2006/2007	177	170	58	56
2007: average 2006/2007/2008	166	148	55	49
2008: average 2007/2008/2009	156	136	51	45
2009: average 2008/2009/2010	146	132	48	43
Average Apr 08-Mar 11	144	127	47	42
Average Jul 08-Jun 11	142	128	47	42
Target 2010: average 2009/2010/2011	137		45	

Note: The casualties for the target year will not be known until February/March 2012 (when the full 2011 data is available)



## LTP2 FACTSHEET



## HIGHWAYS FORECASTING AND ANALYTICAL SERVICES

Greater Manchester Casualty Statistics, June 2011

Progress Towards LTP2 Targets by District						
District	KSI			Child KSI		
	Base	Ave. Jul 08 to Jun 11	Target (2009-11)	Base	Ave. Jul 08 to Jun 11	Target (2009-11)
Bolton	136	86	68	36	16	16
Bury	72	60	36	15	9	7
Manchester	294	171	147	71	27	32
Oldham	109	73	54	29	16	13
Rochdale	107	58	53	28	8	13
Salford	126	71	63	25	8	11
Stockport	111	68	55	16	9	7
Tameside	106	56	53	31	13	14
Trafford	74	50	37	18	6	8
Wigan	147	86	73	37	14	17
<b>Greater Manchester</b>	<b>1281</b>	<b>778</b>	<b>641</b>	<b>304</b>	<b>128</b>	<b>137</b>

Index of Progress Towards LTP2 Targets by District						
District	KSI			Child KSI		
	Base	Ave. Jul 08 to Jun 11	Target (2009-11)	Base	Ave. Jul 08 to Jun 11	Target (2009-11)
Bolton	100	63	50	100	45	45
Bury	100	83	50	100	61	45
Manchester	100	58	50	100	38	45
Oldham	100	67	50	100	57	45
Rochdale	100	54	50	100	30	45
Salford	100	57	50	100	34	45
Stockport	100	61	50	100	60	45
Tameside	100	53	50	100	42	45
Trafford	100	67	50	100	34	45
Wigan	100	59	50	100	39	45
<b>Greater Manchester</b>	<b>100</b>	<b>61</b>	<b>50</b>	<b>100</b>	<b>42</b>	<b>45</b>

Note: Base = Average 1994-1998 = 100