



LTP2 FACTSHEET

GREATER MANCHESTER TRANSPORTATION UNIT

GREATER MANCHESTER KSI CASUALTY STATISTICS

April 2007 - March 2010

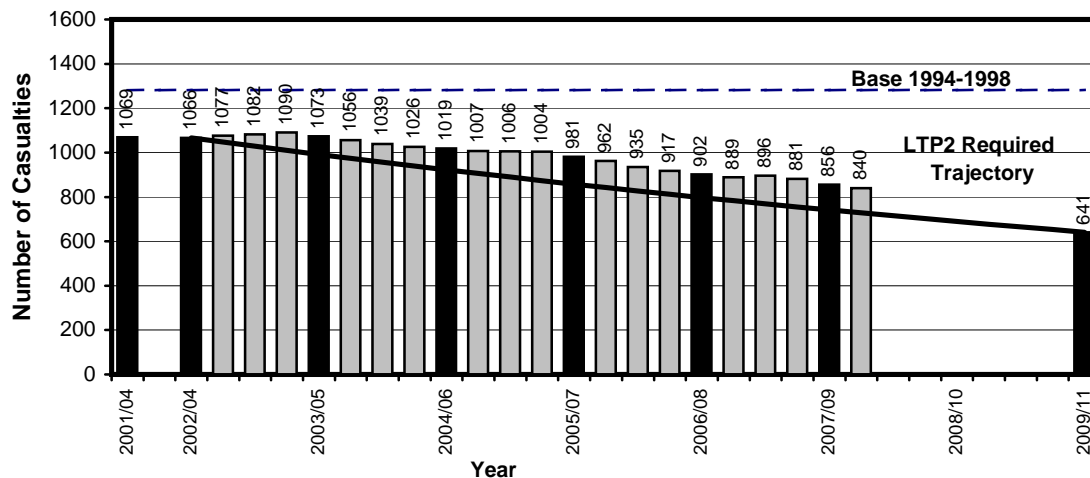
KSI Casualties: 50% casualty reduction on 1994-1998 baseline by 2010

Greater Manchester KSI Casualties, Latest 3-Year Average, from April 07 to March 10

Year	Annual Average		Index	
	Trajectory	Actual	Trajectory	Actual
1994-1998 baseline		1281		100
2001-2004: baseline		1069		83
2003: average 2002/2003/2004	1066	1066	83	83
2004: average 2003/2004/2005	991	1073	77	84
2005: average 2004/2005/2006	922	1019	72	80
2006: average 2005/2006/2007	857	981	67	77
2007: average 2006/2007/2008	797	902	62	70
2008: average 2007/2008/2009	741	856	58	67
<i>Average Apr 07-Mar 10</i>	728	840	57	66
2009: average 2008/2009/2010	689		54	
Target 2010: average 2009/2010/2011	641		50	

Note: The casualties for the target year will not be known until February/March 2012 (when the full 2011 data is available)

Annual Average Target (LTP2) and Actual Averages for KSI Casualties, Latest 3-Year Average April 2007-March 2010, Greater Manchester



Base = 1281 Casualties (1994-1998 Average)
2009/11 bar shows target set at 50% reduction on base



LTP2 FACTSHEET

GREATER MANCHESTER TRANSPORTATION UNIT

GREATER MANCHESTER CHILD KSI CASUALTY STATISTICS

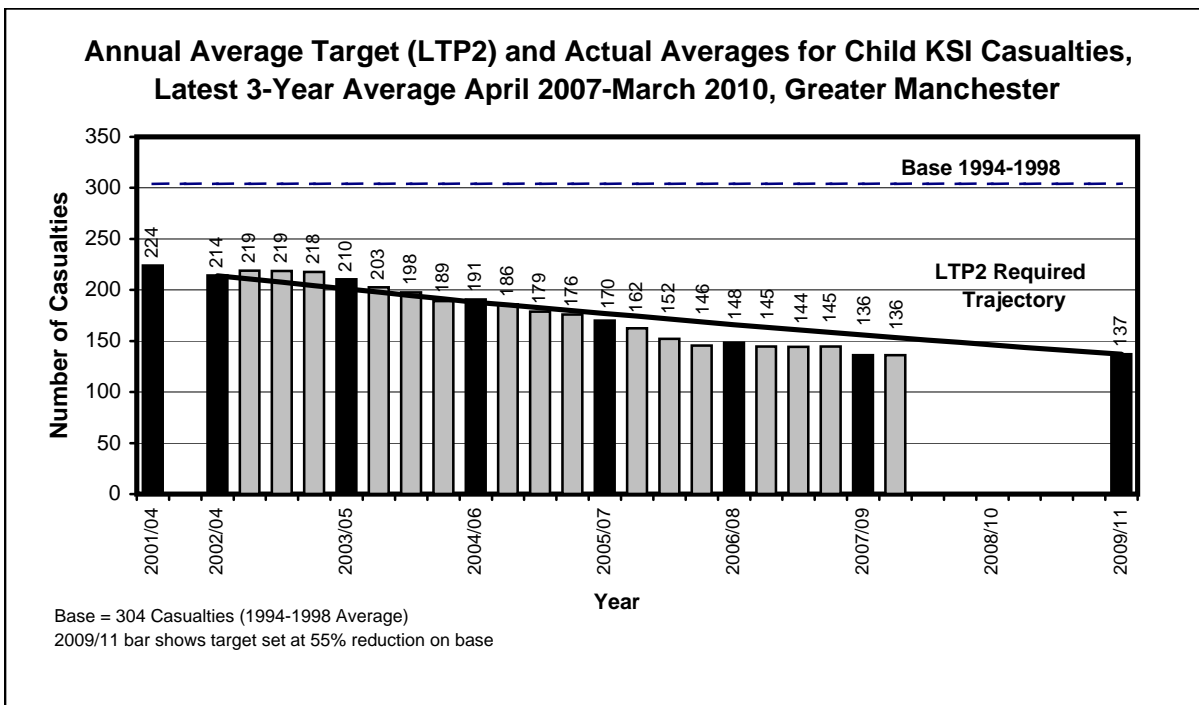
April 2007 - March 2010

Child KSI Casualties: 55% casualty reduction on 1994-1998 baseline by 2010

Greater Manchester KSI Casualties, Latest 3-Year Average, from April 07 to March 10

Annual Average Target (LTP2) and Actual Averages for Child KSI Casualties				
Year	Annual Average		Index	
	Trajectory	Actual	Trajectory	Actual
1994-1998 baseline		304		100
2001-2004: baseline		224		74
2003: average 2002/2003/2004	214	214	70	70
2004: average 2003/2004/2005	201	210	66	69
2005: average 2004/2005/2006	188	191	62	63
2006: average 2005/2006/2007	177	170	58	56
2007: average 2006/2007/2008	166	148	55	49
2008: average 2007/2008/2009	156	136	51	45
<i>Average Apr 07-Mar 10</i>	154	136	50	45
2009: average 2008/2009/2010	146		48	
Target 2010: average 2009/2010/2011	137		45	

Note: The casualties for the target year will not be known until February/March 2012 (when the full 2011 data is available)





LTP2 FACTSHEET

GREATER MANCHESTER TRANSPORTATION UNIT

GREATER MANCHESTER SLIGHTLY INJURED CASUALTY STATISTICS

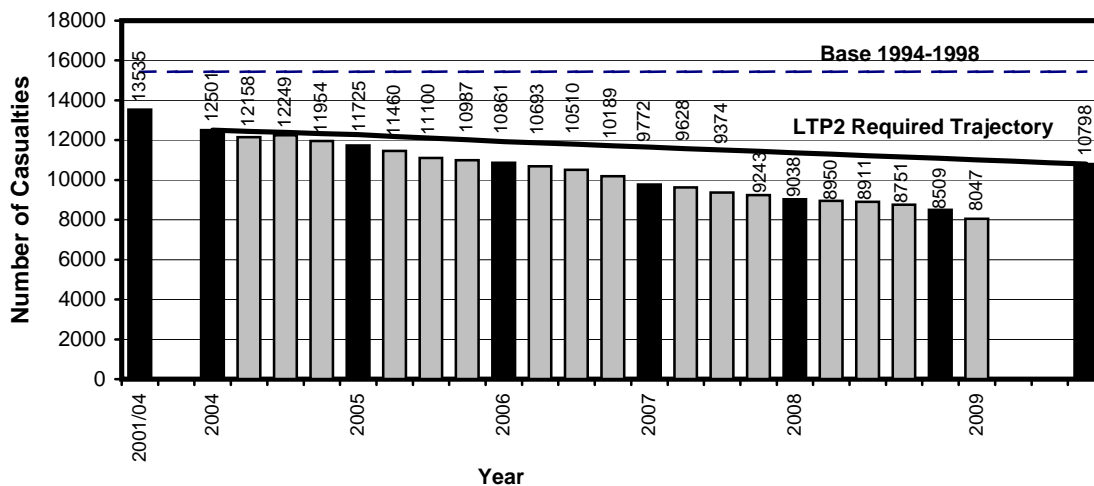
April 2009 - March 2010

Slight Casualties: 30% casualty reduction on 1994-1998 baseline by 2010

Greater Manchester Slight Casualties, Latest 12 Months, from April 09 to March 10

Target (LTP2) and Actual Numbers for Slight Casualties				
Year	Number		Index	
	Trajectory	Actual	Trajectory	Actual
1994-1998 baseline		15426		100
2001-2004: baseline		13535		88
2004	12501	12501	81	81
2005	12271	11725	80	76
2006	11933	10861	77	70
2007	11650	9772	76	63
2008	11366	9038	74	59
2009	11082	8509	72	55
Apr 09-Mar 10	11011	8047	71	52
Target 2010	10798		70	

Target (LTP2) and Actual Numbers for Slight Casualties,
Latest 12 Months April 2009-March 2010, Greater Manchester



Base = 15426 Casualties (1994-1998 Average)
2010 bar shows target set at 30% reduction on base

Progress Towards LTP2 Targets by District									
District	KSI			Child KSI			Slight		
	Base	Ave. Apr 07 to Mar 10	Target	Base	Ave. Apr 07 to Mar 10	Target	Base	Apr 09 to Mar 10	Target
Bolton	136	83	68	36	16	16	1537	883	1076
Bury	72	60	36	15	9	7	954	610	668
Manchester	294	191	147	71	29	32	3358	2117	2350
Oldham	109	71	54	29	17	13	1262	607	884
Rochdale	107	73	53	28	9	13	1209	607	846
Salford	126	85	63	25	11	11	1689	793	1182
Stockport	111	73	55	16	9	7	1483	607	1038
Tameside	106	59	53	31	13	14	1076	566	753
Trafford	74	53	37	18	6	8	1124	564	787
Wigan	147	92	73	37	16	17	1735	693	1214
Greater Manchester	1281	840	641	304	136	137	15426	8047	10798

Note: Base = Average 1994-1998

Index of Progress Towards LTP2 Targets by District									
District	KSI			Child KSI			Slight		
	Base	Ave. Apr 07 to Mar 10	Target	Base	Ave. Apr 07 to Mar 10	Target	Base	Apr 09 to Mar 10	Target
Bolton	100	61	50	100	44	45	100	57	70
Bury	100	83	50	100	59	45	100	64	70
Manchester	100	65	50	100	41	45	100	63	70
Oldham	100	66	50	100	58	45	100	48	70
Rochdale	100	68	50	100	34	45	100	50	70
Salford	100	68	50	100	46	45	100	47	70
Stockport	100	66	50	100	58	45	100	41	70
Tameside	100	56	50	100	43	45	100	53	70
Trafford	100	71	50	100	36	45	100	50	70
Wigan	100	63	50	100	44	45	100	40	70
Greater Manchester	100	66	50	100	45	45	100	52	70

Note: Base = Average 1994-1998 = 100

Greater Manchester Transportation Unit



PEDESTRIAN AND PEDAL CYCLE FACTSHEET

GREATER MANCHESTER PEDESTRIAN AND PEDAL CYCLE CASUALTY STATISTICS

April 08 - March 09, April 09 - March 10, Base

Greater Manchester Pedestrian Casualties by Road Class

April 08 - March 09, April 09 - March 10, Base

Road Class	Base ⁽¹⁾ Ave 1994-98	Apr 08 - Mar 09	Apr 09 - Mar 10	% Change (09 - 10/ 08 - 09)	% Change (09 - 10 /Base)
Motorway ⁽²⁾	6	9	2	-77.8	-66.7
A Class Roads ⁽³⁾	1160	619	524	-15.3	-54.8
B Class Roads	382	205	201	-2.0	-47.4
Minor Roads	1391	785	633	-19.4	-54.5
Non-Motorways	2933	1609	1358	-15.6	-53.7
Total	2939	1618	1360	-15.9	-53.7

Greater Manchester Pedal Cycle Casualties by Road Class

April 08 - March 09, April 09 - March 10, Base

Road Class	Base ⁽¹⁾ Ave 1994-98	Apr 08 - Mar 09	Apr 09 - Mar 10	% Change (09 - 10/ 08 - 09)	% Change (09 - 10 /Base)
Motorway ⁽²⁾	2	0	0	-(4)	-(4)
A Class Roads ⁽³⁾	446	329	334	1.5	-25.1
B Class Roads	163	136	104	-23.5	-36.2
Minor Roads	576	286	282	-1.4	-51.0
Non-Motorways	1186	751	720	-4.1	-39.3
Total	1188	751	720	-4.1	-39.4

Notes :-

1. Base figures are rounded to the nearest whole number
2. Motorways include the A627(M) but exclude A57(M) and A6144(M). The A6144(M) was reclassified as A6144 on 24 May 2006
3. A Roads include A(M) and A(T) roads except A627(M)
4. Casualty numbers too small to make % changes meaningful

RUNNING ANNUAL TOTALS - ROAD CASUALTIES

Greater Manchester Running Annual Casualty Totals 2008 to 2010													
12 Month Total	Apr 08 - Mar 09	May 08 - Apr 09	Jun 08 - May 09	Jul 08 - Jun 09	Aug 08 - Jul 09	Sep 08 - Aug 09	Oct 08 - Sep 09	Nov 08 - Oct 09	Dec 08 - Nov 09	Jan 09 - Dec 09	Feb 09 - Jan 10	Mar 09 - Feb 10	Apr 09 - Mar 10
Casualty Severity													
Killed	71	69	69	71	72	67	72	75	72	73	64	65	62
Serious	756	776	793	780	777	760	750	726	731	721	712	708	714
Slight	8950	8887	8940	8911	8876	8825	8751	8641	8596	8509	8205	8180	8047
Total	9777	9732	9802	9762	9725	9652	9573	9442	9399	9303	8981	8953	8823
KSI	827	845	862	851	849	827	822	801	803	794	776	773	776
Casualty Class													
Pedestrians	1618	1613	1600	1578	1560	1552	1508	1462	1460	1436	1381	1378	1360
Pedal Cyclists	751	758	746	752	757	766	759	774	766	752	736	731	720
Motor Cyclists	573	585	578	576	563	552	544	527	524	518	501	505	498
Car Users	6164	6132	6227	6226	6237	6194	6178	6104	6095	6059	5846	5829	5755
Others	671	644	651	630	608	588	584	575	554	538	517	510	490
Total	9777	9732	9802	9762	9725	9652	9573	9442	9399	9303	8981	8953	8823
Child (0-15) Casualty Severity													
Killed	4	4	4	4	4	5	6	7	7	6	5	5	5
Serious	130	139	136	135	133	138	140	131	124	123	123	125	131
Slight	1089	1074	1063	1074	1081	1082	1087	1069	1073	1072	1044	1031	1017
Total	1223	1217	1203	1213	1218	1225	1233	1207	1204	1201	1172	1161	1153
KSI	134	143	140	139	137	143	146	138	131	129	128	130	136

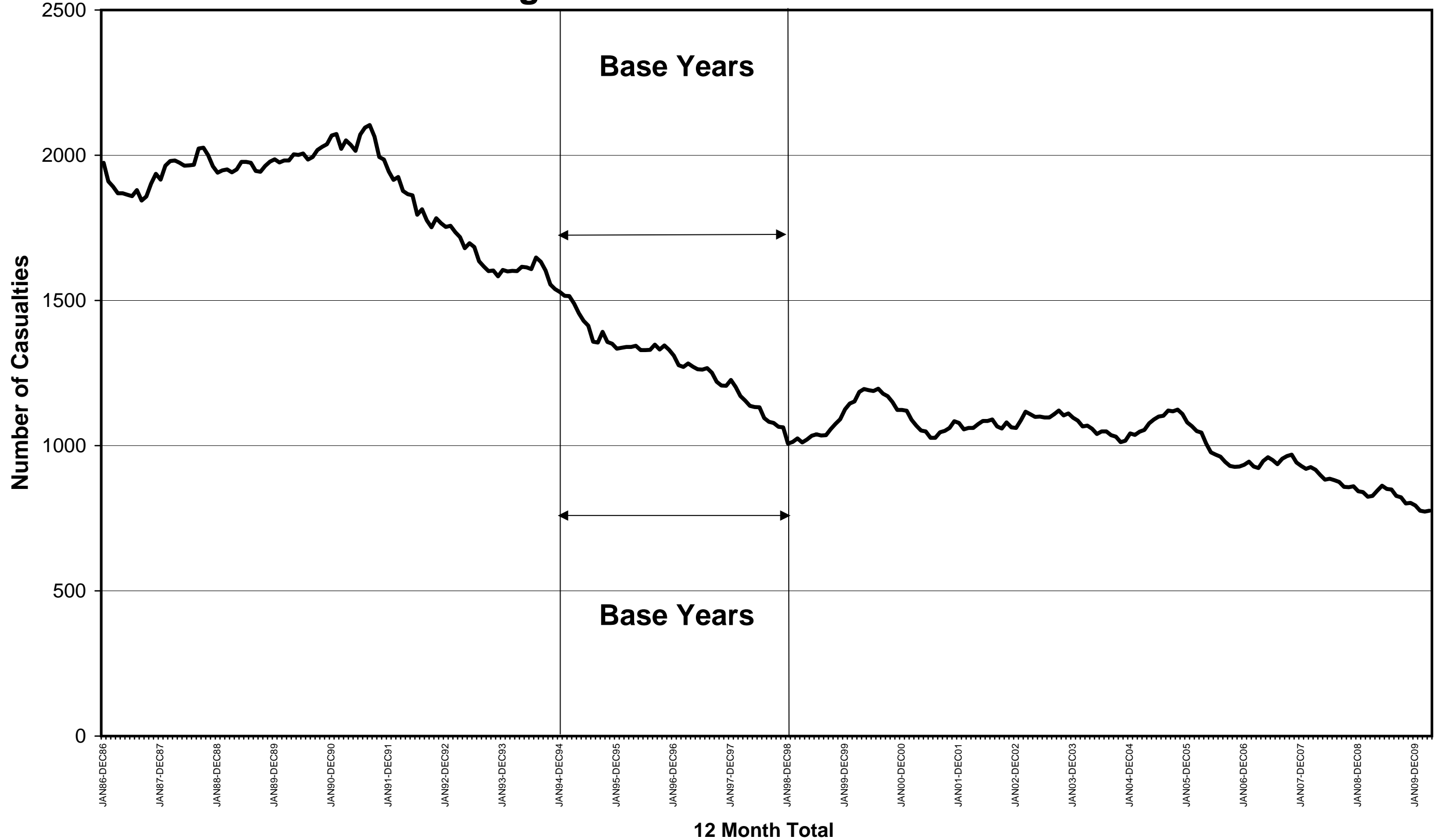
Notes: Car – From 1/4/99 this definition was revised to exclude invalid tricycles and motor caravans.
 KSI – Killed and Seriously Injured

Greater Manchester Running Annual Casualty Totals 2008 to 2010

12 Month Total	Apr 08 - Mar 09	May 08 - Apr 09	Jun 08 - May 09	Jul 08 - Jun 09	Aug 08 - Jul 09	Sep 08 - Aug 09	Oct 08 - Sep 09	Nov 08 - Oct 09	Dec 08 - Nov 09	Jan 09 - Dec 09	Feb 09 - Jan 10	Mar 09 - Feb 10	Apr 09 - Mar 10
District: Casualties													
Bolton: Killed	12	11	11	11	10	11	12	13	12	11	8	7	9
Bolton: Serious	66	66	72	72	70	63	62	60	63	66	62	67	67
Bolton: Slight	893	920	895	892	923	925	923	940	922	920	881	880	883
Bolton: Total	971	997	978	975	1003	999	997	1013	997	997	951	954	959
Bury: Killed	4	4	3	4	4	3	3	3	3	3	2	2	3
Bury: Serious	50	50	53	49	54	54	59	61	61	63	66	61	69
Bury: Slight	606	580	608	620	631	622	641	626	631	635	626	626	610
Bury: Total	660	634	664	673	689	679	703	690	695	701	694	689	682
Manchester: Killed	9	10	10	11	11	12	13	14	13	13	12	14	13
Manchester: Serious	169	171	179	186	185	193	187	178	184	174	173	168	169
Manchester: Slight	2254	2228	2264	2294	2262	2272	2268	2244	2251	2217	2115	2111	2117
Manchester: Total	2432	2409	2453	2491	2458	2477	2468	2436	2448	2404	2300	2293	2299
Oldham: Killed	6	6	7	8	9	9	13	13	10	11	11	11	10
Oldham: Serious	62	64	65	60	58	60	59	57	56	57	60	63	56
Oldham: Slight	780	758	745	708	697	690	670	660	646	627	625	617	607
Oldham: Total	848	828	817	776	764	759	742	730	712	695	696	691	673
Rochdale: Killed	9	8	5	5	5	3	3	3	3	2	1	1	0
Rochdale: Serious	72	78	77	78	76	67	67	59	55	54	57	57	57
Rochdale: Slight	699	701	724	710	691	657	667	639	644	641	620	619	607
Rochdale: Total	780	787	806	793	772	727	737	701	702	697	678	677	664
Salford: Killed	3	3	4	4	4	4	4	5	6	6	5	5	5
Salford: Serious	81	79	80	80	83	81	75	68	66	65	60	64	66
Salford: Slight	847	853	882	879	870	881	890	883	858	848	813	810	793
Salford: Total	931	935	966	963	957	966	969	956	930	919	878	879	864
Stockport: Killed	11	10	11	11	12	8	7	6	6	7	7	7	6
Stockport: Serious	65	66	62	58	60	56	58	59	58	64	66	60	63
Stockport: Slight	714	705	676	674	663	664	640	626	634	645	631	633	607
Stockport: Total	790	781	749	743	735	728	705	691	698	716	704	700	676
Tameside: Killed	3	5	5	4	4	3	4	4	4	4	4	5	4
Tameside: Serious	49	54	58	56	54	49	49	48	48	45	45	47	50
Tameside: Slight	617	609	616	597	615	621	622	601	617	614	588	574	566
Tameside: Total	669	668	679	657	673	673	675	653	669	663	637	626	620
Trafford: Killed	5	4	4	4	3	3	3	5	5	6	5	5	5
Trafford: Serious	48	44	48	49	47	49	50	48	49	46	44	46	44
Trafford: Slight	674	668	664	660	640	629	601	588	576	569	562	570	564
Trafford: Total	727	716	716	713	690	681	654	641	630	621	611	621	613
Wigan: Killed	9	8	9	9	10	11	10	9	10	10	9	8	7
Wigan: Serious	94	104	99	92	90	88	84	88	91	87	79	75	73
Wigan: Slight	866	865	866	877	884	864	829	834	817	793	744	740	693
Wigan: Total	969	977	974	978	984	963	923	931	918	890	832	823	773
Total	9777	9732	9802	9762	9725	9652	9573	9442	9399	9303	8981	8953	8823

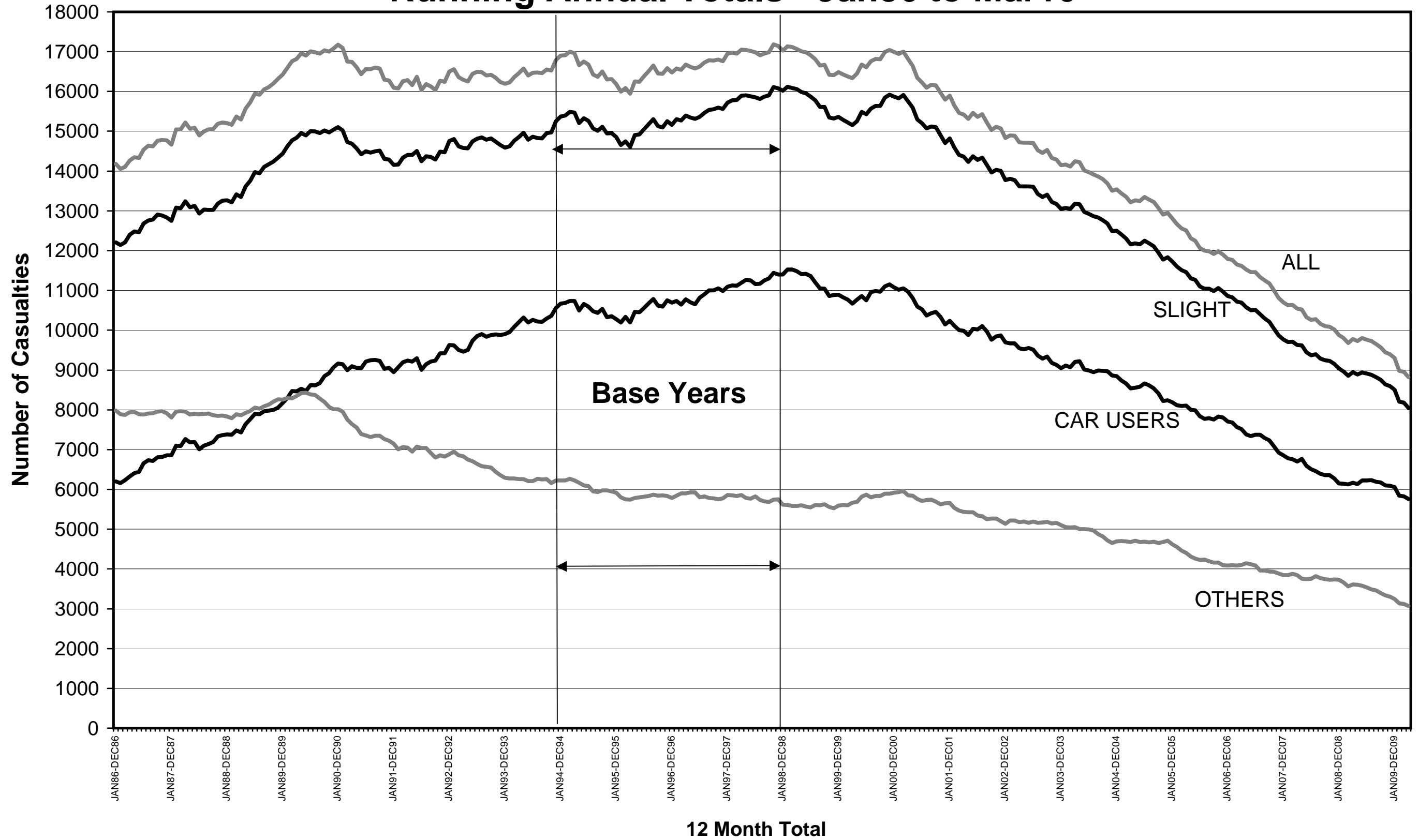
Greater Manchester Killed & Seriously Injured Casualties

Running Annual Totals - Jan86 to Mar10



Greater Manchester Casualties by Casualty Class

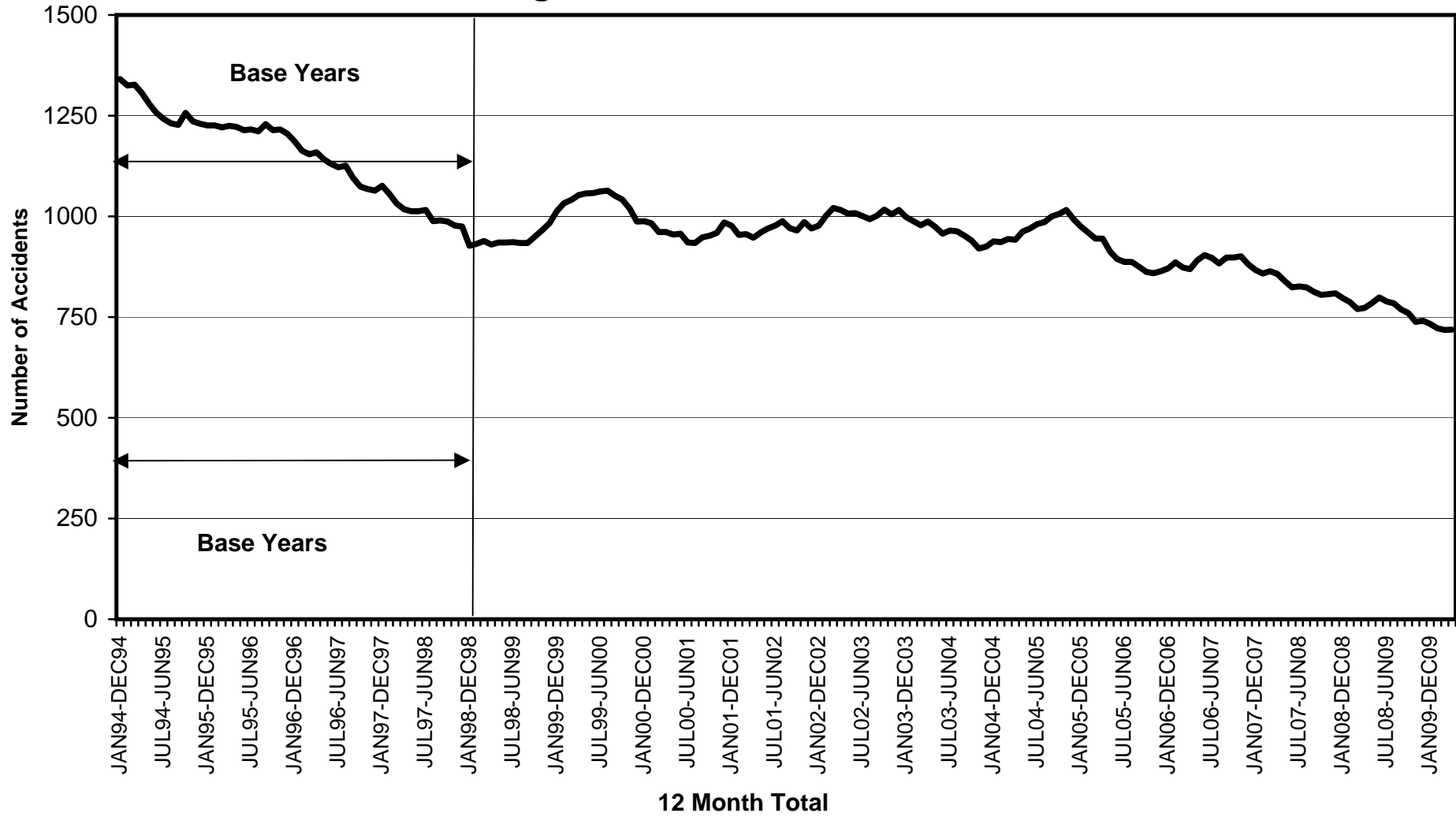
Running Annual Totals - Jan86 to Mar10



RUNNING ANNUAL TOTALS – ROAD ACCIDENTS

Greater Manchester Running Annual Accident Totals 2008 to 2010													
12 Month Total	Apr 08 - Mar 09	May 08 - Apr 09	Jun 08 - May 09	Jul 08 - Jun 09	Aug 08 - Jul 09	Sep 08 - Aug 09	Oct 08 - Sep 09	Nov 08 - Oct 09	Dec 08 - Nov 09	Jan 09 - Dec 09	Feb 09 - Jan 10	Mar 09 - Feb 10	Apr 09 - Mar 10
Accident Severity													
Killed	66	64	64	66	67	64	67	69	68	69	61	62	59
Serious	707	721	735	723	717	705	693	669	673	664	661	656	660
Slight	6184	6112	6090	6070	6069	6028	5933	5856	5843	5777	5578	5559	5459
Total	6957	6897	6889	6859	6853	6797	6693	6594	6584	6510	6300	6277	6178
District: Accidents													
Bolton: Killed	11	10	10	10	9	10	10	11	10	9	7	6	8
Bolton: Serious	61	63	67	68	65	58	56	54	55	58	56	61	61
Bolton: Slight	650	644	611	605	619	613	600	595	589	585	561	556	551
Bolton: Total	722	717	688	683	693	681	666	660	654	652	624	623	620
Bury: Killed	4	4	3	4	4	3	3	3	3	3	2	2	3
Bury: Serious	47	46	49	46	50	51	56	58	58	61	64	59	66
Bury: Slight	415	401	413	423	429	411	404	397	402	400	391	396	383
Bury: Total	466	451	465	473	483	465	463	458	463	464	457	457	452
Manchester: Killed	9	10	10	11	11	12	13	14	13	13	12	14	13
Manchester: Serious	161	162	170	175	173	182	176	165	171	162	161	157	158
Manchester: Slight	1571	1545	1549	1555	1545	1556	1559	1537	1551	1532	1469	1474	1466
Manchester: Total	1741	1717	1729	1741	1729	1750	1748	1716	1735	1707	1642	1645	1637
Oldham: Killed	4	4	5	6	7	7	10	10	9	10	10	10	9
Oldham: Serious	59	61	61	56	53	55	51	49	50	51	53	56	49
Oldham: Slight	490	475	470	451	442	434	423	420	419	410	405	397	393
Oldham: Total	553	540	536	513	502	496	484	479	478	471	468	463	451
Rochdale: Killed	8	7	4	4	4	3	3	3	3	2	1	1	0
Rochdale: Serious	65	71	71	72	70	65	65	56	52	51	54	53	53
Rochdale: Slight	487	481	487	476	463	447	443	431	434	428	407	410	397
Rochdale: Total	560	559	562	552	537	515	511	490	489	481	462	464	450
Salford: Killed	3	3	4	4	4	4	4	5	6	6	5	5	5
Salford: Serious	76	73	74	75	78	72	66	60	58	57	54	58	59
Salford: Slight	580	582	589	587	576	580	587	593	579	565	546	541	531
Salford: Total	659	658	667	666	658	656	657	658	643	628	605	604	595
Stockport: Killed	10	9	10	10	11	8	7	6	6	7	7	7	6
Stockport: Serious	60	61	57	53	55	52	56	57	55	61	63	58	60
Stockport: Slight	519	515	501	506	502	504	484	472	473	479	465	459	441
Stockport: Total	589	585	568	569	568	564	547	535	534	547	535	524	507
Tameside: Killed	3	5	5	4	4	3	4	4	4	4	4	5	4
Tameside: Serious	46	51	53	51	49	46	46	45	46	42	42	43	45
Tameside: Slight	426	417	416	401	425	428	422	404	408	408	397	387	388
Tameside: Total	475	473	474	456	478	477	472	453	458	454	443	435	437
Trafford: Killed	5	4	4	4	3	3	3	4	4	5	4	4	4
Trafford: Serious	45	41	45	46	45	47	48	47	48	45	44	45	43
Trafford: Slight	461	462	463	468	460	459	443	439	433	432	425	428	420
Trafford: Total	511	507	512	518	508	509	494	490	485	482	473	477	467
Wigan: Killed	9	8	9	9	10	11	10	9	10	10	9	8	7
Wigan: Serious	87	92	88	81	79	77	73	78	80	76	70	66	66
Wigan: Slight	585	590	591	598	608	596	568	568	555	538	512	511	489
Wigan: Total	681	690	688	688	697	684	651	655	645	624	591	585	562
Total	6957	6897	6889	6859	6853	6797	6693	6594	6584	6510	6300	6277	6178

Greater Manchester Killed & Seriously Injured Accidents Running Annual Totals - Jan94 to Mar10



Greater Manchester Slight Accidents Running Annual Totals - Jan94 to Mar10

