



LTP2 FACTSHEET

GREATER MANCHESTER TRANSPORTATION UNIT

GREATER MANCHESTER KSI CASUALTY STATISTICS

July 2007 - June 2010

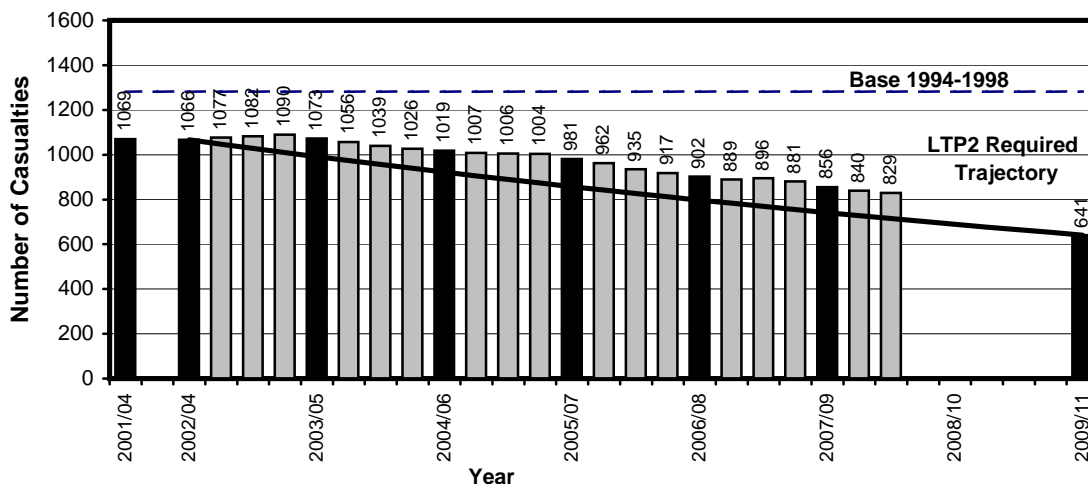
KSI Casualties: 50% casualty reduction on 1994-1998 baseline by 2010

Greater Manchester KSI Casualties, Latest 3-Year Average, from July 07 to June 10

Annual Average Target (LTP2) and Actual Averages for KSI Casualties				
Year	Annual Average		Index	
	Trajectory	Actual	Trajectory	Actual
1994-1998 baseline		1281		100
2001-2004: baseline		1069		83
2003: average 2002/2003/2004	1066	1066	83	83
2004: average 2003/2004/2005	991	1073	77	84
2005: average 2004/2005/2006	922	1019	72	80
2006: average 2005/2006/2007	857	981	67	77
2007: average 2006/2007/2008	797	902	62	70
2008: average 2007/2008/2009	741	856	58	67
Average Apr 07-Mar 10	728	840	57	66
Average Jul 07-Jun 10	715	829	56	65
2009: average 2008/2009/2010	689		54	
Target 2010: average 2009/2010/2011	641		50	

Note: The casualties for the target year will not be known until February/March 2012 (when the full 2011 data is available)

**Annual Average Target (LTP2) and Actual Averages for KSI Casualties,
Latest 3-Year Average July 2007-June 2010, Greater Manchester**



Base = 1281 Casualties (1994-1998 Average)
2009/11 bar shows target set at 50% reduction on base



LTP2 FACTSHEET

GREATER MANCHESTER TRANSPORTATION UNIT

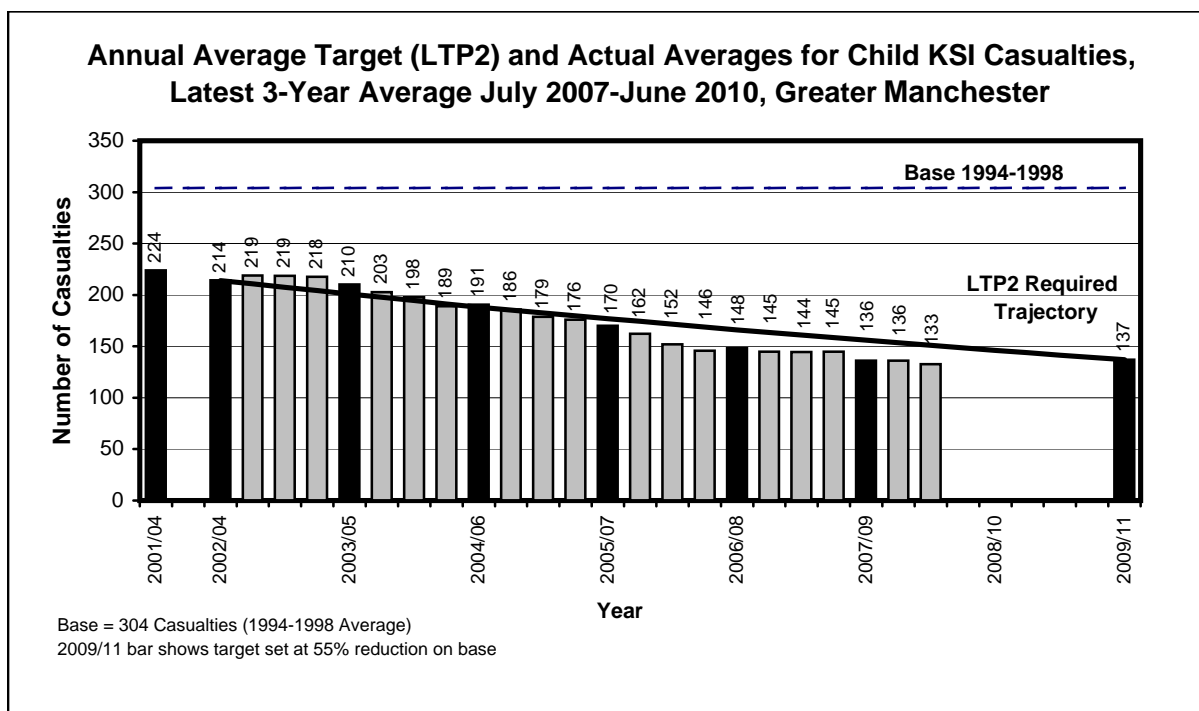
GREATER MANCHESTER CHILD KSI CASUALTY STATISTICS
July 2007 - June 2010

Child KSI Casualties: 55% casualty reduction on 1994-1998 baseline by 2010

Greater Manchester KSI Casualties, Latest 3-Year Average, from July 07 to June 10

Annual Average Target (LTP2) and Actual Averages for Child KSI Casualties				
Year	Annual Average		Index	
	Trajectory	Actual	Trajectory	Actual
1994-1998 baseline		304		100
2001-2004: baseline		224		74
2003: average 2002/2003/2004	214	214	70	70
2004: average 2003/2004/2005	201	210	66	69
2005: average 2004/2005/2006	188	191	62	63
2006: average 2005/2006/2007	177	170	58	56
2007: average 2006/2007/2008	166	148	55	49
2008: average 2007/2008/2009	156	136	51	45
<i>Average Apr 07-Mar 10</i>	154	136	50	45
<i>Average Jul 07-Jun 10</i>	151	133	50	44
2009: average 2008/2009/2010	146		48	
Target 2010: average 2009/2010/2011	137		45	

Note: The casualties for the target year will not be known until February/March 2012 (when the full 2011 data is available)





LTP2 FACTSHEET

GREATER MANCHESTER TRANSPORTATION UNIT

GREATER MANCHESTER SLIGHTLY INJURED CASUALTY STATISTICS

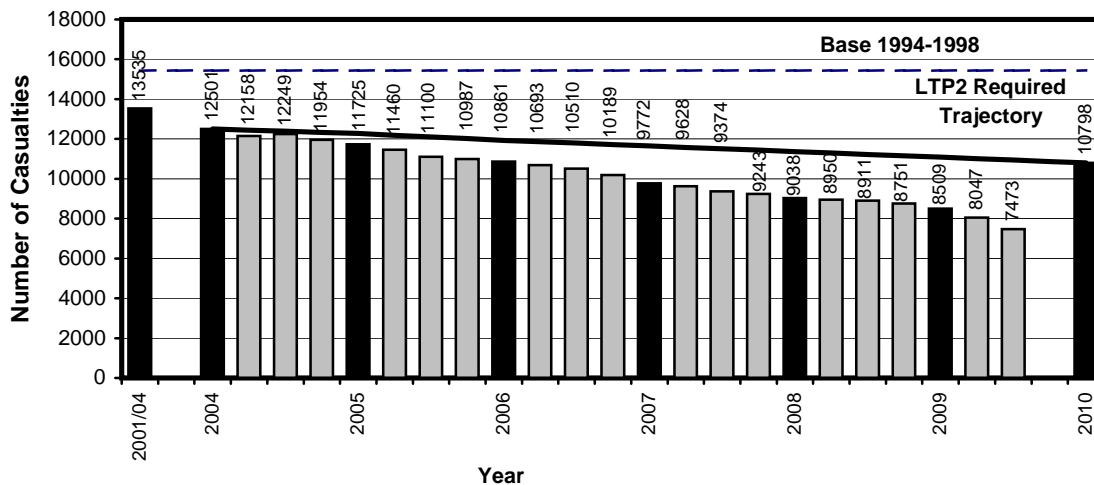
July 2009 - June 2010

Slight Casualties: 30% casualty reduction on 1994-1998 baseline by 2010

Greater Manchester Slight Casualties, Latest 12 Months, from July 09 to June 10

Target (LTP2) and Actual Numbers for Slight Casualties				
Year	Number		Index	
	Trajectory	Actual	Trajectory	Actual
1994-1998 baseline		15426		100
2001-2004: baseline		13535		88
2004	12501	12501	81	81
2005	12271	11725	80	76
2006	11933	10861	77	70
2007	11650	9772	76	63
2008	11366	9038	74	59
2009	11082	8509	72	55
Apr 09-Mar 10	11011	8047	71	52
Jul 09-Jun 10	10940	7473	71	48
Target 2010	10798		70	

Target (LTP2) and Actual Numbers for Slight Casualties, Latest 12 Months July 2009-June 2010, Greater Manchester



Base = 15426 Casualties (1994-1998 Average)
 2010 bar shows target set at 30% reduction on base

Progress Towards LTP2 Targets by District									
District	KSI			Child KSI			Slight		
	Base	Ave. Jul 07 to Jun 10	Target	Base	Ave. Jul 07 to Jun 10	Target	Base	Jul 09 to Jun 10	Target
Bolton	136	85	68	36	16	16	1537	809	1076
Bury	72	61	36	15	9	7	954	544	668
Manchester	294	190	147	71	30	32	3358	1937	2350
Oldham	109	72	54	29	17	13	1262	630	884
Rochdale	107	70	53	28	10	13	1209	510	846
Salford	126	80	63	25	10	11	1689	699	1182
Stockport	111	74	55	16	8	7	1483	617	1038
Tameside	106	58	53	31	13	14	1076	546	753
Trafford	74	53	37	18	6	8	1124	540	787
Wigan	147	86	73	37	14	17	1735	641	1214
Greater Manchester	1281	829	641	304	133	137	15426	7473	10798

Note: Base = Average 1994-1998

Index of Progress Towards LTP2 Targets by District									
District	KSI			Child KSI			Slight		
	Base	Ave. Jul 07 to Jun 10	Target	Base	Ave. Jul 07 to Jun 10	Target	Base	Jul 09 to Jun 10	Target
Bolton	100	62	50	100	44	45	100	53	70
Bury	100	84	50	100	61	45	100	57	70
Manchester	100	65	50	100	42	45	100	58	70
Oldham	100	67	50	100	59	45	100	50	70
Rochdale	100	66	50	100	35	45	100	42	70
Salford	100	63	50	100	42	45	100	41	70
Stockport	100	67	50	100	53	45	100	42	70
Tameside	100	55	50	100	42	45	100	51	70
Trafford	100	71	50	100	34	45	100	48	70
Wigan	100	58	50	100	37	45	100	37	70
Greater Manchester	100	65	50	100	44	45	100	48	70

Note: Base = Average 1994-1998 = 100

Greater Manchester Transportation Unit



PEDESTRIAN AND PEDAL CYCLE FACTSHEET

GREATER MANCHESTER PEDESTRIAN AND PEDAL CYCLE CASUALTY STATISTICS

July 08 - June 09, July 09 - June 10, Base

Greater Manchester Pedestrian Casualties by Road Class

July 08 - June 09, July 09 - June 10, Base

Road Class	Base ⁽¹⁾ Ave 1994-98	Jul 08 - Jun 09	Jul 09 - Jun 10	% Change (09 - 10/ 08 - 09)	% Change (09 - 10 /Base)
Motorway ⁽²⁾	6	5	2	-60.0	-66.7
A Class Road ⁽³⁾	1160	613	515	-16.0	-55.6
B Class Roads	382	200	189	-5.5	-50.5
Minor Roads	1391	760	651	-14.3	-53.2
Non-Motorways	2933	1573	1355	-13.9	-53.8
Total	2939	1578	1357	-14.0	-53.8

Greater Manchester Pedal Cycle Casualties by Road Class

July 08 - June 09, July 09 - June 10, Base

Road Class	Base ⁽¹⁾ Ave 1994-98	Jul 08 - Jun 09	Jul 09 - Jun 10	% Change (09 - 10/ 08 - 09)	% Change (09 - 10 /Base)
Motorway ⁽²⁾	2	0	0	-(4)	-(4)
A Class Roads ⁽³⁾	446	344	341	-0.9	-23.5
B Class Roads	163	131	103	-21.4	-36.8
Minor Roads	576	277	293	5.8	-49.1
Non-Motorways	1186	752	737	-2.0	-37.9
Total	1188	752	737	-2.0	-38.0

Notes :-

1. Base figures are rounded to the nearest whole number
2. Motorways include the A627(M) but exclude A57(M) and A6144(M). The A6144(M) was reclassified as A6144 on 24 May 2006
3. A Roads include A(M) and A(T) roads except A627(M)
4. Casualty numbers too small to make % changes meaningful

RUNNING ANNUAL TOTALS - ROAD CASUALTIES

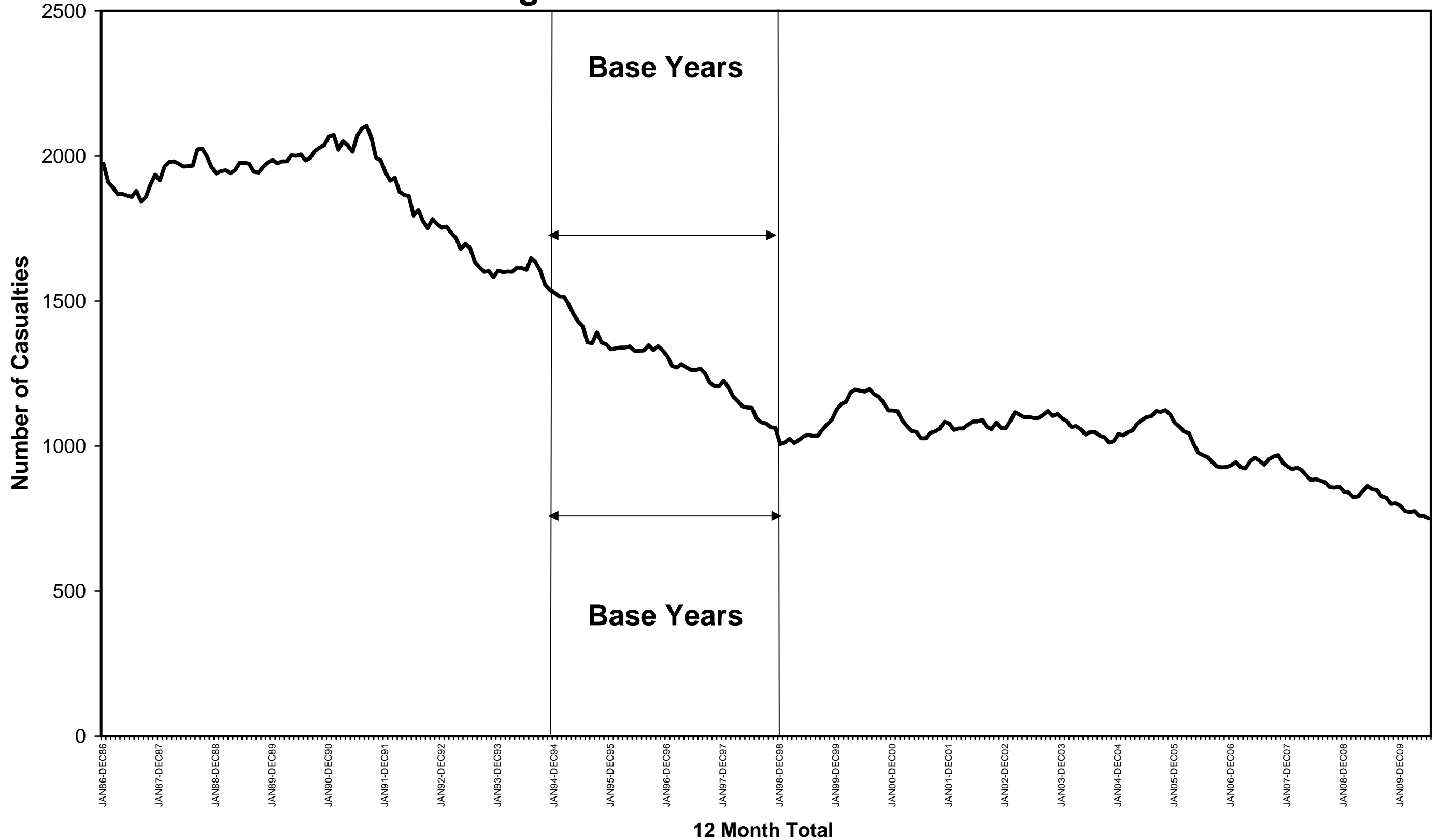
Greater Manchester Running Annual Casualty Totals 2008 to 2010													
12 Month Total	Jul 08 - Jun 09	Aug 08 - Jul 09	Sep 08 - Aug 09	Oct 08 - Sep 09	Nov 08 - Oct 09	Dec 08 - Nov 09	Jan 09 - Dec 09	Feb 09 - Jan 10	Mar 09 - Feb 10	Apr 09 - Mar 10	May 09 - Apr 10	Jun 09 - May 10	Jul 09 - Jun 10
Casualty Severity													
Killed	71	72	67	72	75	72	73	64	65	63	60	62	59
Serious	780	777	760	750	726	731	721	712	708	713	700	697	691
Slight	8911	8876	8825	8751	8641	8596	8509	8205	8180	8047	7901	7626	7473
Total	9762	9725	9652	9573	9442	9399	9303	8981	8953	8823	8661	8385	8223
KSI	851	849	827	822	801	803	794	776	773	776	760	759	750
Casualty Class													
Pedestrians	1578	1560	1552	1508	1462	1460	1436	1381	1378	1360	1373	1353	1357
Pedal Cyclists	752	757	766	759	774	766	752	736	731	720	727	738	737
Motor Cyclists	576	563	552	544	527	524	518	501	505	498	484	487	496
Car Users	6226	6237	6194	6178	6104	6095	6059	5846	5829	5755	5601	5351	5191
Others	630	608	588	584	575	554	538	517	510	490	476	456	442
Total	9762	9725	9652	9573	9442	9399	9303	8981	8953	8823	8661	8385	8223
Child (0-15) Casualty Severity													
Killed	4	4	5	6	7	7	6	5	5	5	5	5	4
Serious	135	133	138	140	131	124	123	123	125	131	124	127	120
Slight	1074	1081	1082	1087	1069	1073	1072	1044	1031	1017	1020	1009	979
Total	1213	1218	1225	1233	1207	1204	1201	1172	1161	1153	1149	1141	1103
KSI	139	137	143	146	138	131	129	128	130	136	129	132	124

Notes: Car – From 1/4/99 this definition was revised to exclude invalid tricycles and motor caravans.
 KSI – Killed and Seriously Injured

Greater Manchester Running Annual Casualty Totals 2008 to 2010													
12 Month Total	Jul 08 - Jun 09	Aug 08 - Jul 09	Sep 08 - Aug 09	Oct 08 - Sep 09	Nov 08 - Oct 09	Dec 08 - Nov 09	Jan 09 - Dec 09	Feb 09 - Jan 10	Mar 09 - Feb 10	Apr 09 - Mar 10	May 09 - Apr 10	Jun 09 - May 10	Jul 09 - Jun 10
District: Casualties													
Bolton: Killed	11	10	11	12	13	12	11	8	7	9	9	8	8
Bolton: Serious	72	70	63	62	60	63	66	62	67	67	70	70	70
Bolton: Slight	892	923	925	923	940	922	920	881	880	883	834	815	809
Bolton: Total	975	1003	999	997	1013	997	997	951	954	959	913	893	887
Bury: Killed	4	4	3	3	3	3	3	2	2	4	4	6	5
Bury: Serious	49	54	54	59	61	61	63	66	61	68	69	70	70
Bury: Slight	620	631	622	641	626	631	635	626	626	610	609	578	544
Bury: Total	673	689	679	703	690	695	701	694	689	682	682	654	619
Manchester: Killed	11	11	12	13	14	13	13	12	14	13	11	12	11
Manchester: Serious	186	185	193	187	178	184	174	173	168	169	166	157	148
Manchester: Slight	2294	2262	2272	2268	2244	2251	2217	2115	2111	2117	2072	1978	1937
Manchester: Total	2491	2458	2477	2468	2436	2448	2404	2300	2293	2299	2249	2147	2096
Oldham: Killed	8	9	9	13	13	10	11	11	11	10	11	12	11
Oldham: Serious	60	58	60	59	57	56	57	60	63	56	57	60	67
Oldham: Slight	708	697	690	670	660	646	627	625	617	607	612	615	630
Oldham: Total	776	764	759	742	730	712	695	696	691	673	680	687	708
Rochdale: Killed	5	5	3	3	3	3	2	1	1	0	0	0	0
Rochdale: Serious	78	76	67	67	59	55	54	57	57	57	51	52	49
Rochdale: Slight	710	691	657	667	639	644	641	620	619	607	582	557	510
Rochdale: Total	793	772	727	737	701	702	697	678	677	664	633	609	559
Salford: Killed	4	4	4	4	5	6	6	5	5	5	5	5	4
Salford: Serious	80	83	81	75	68	66	65	60	64	66	65	68	64
Salford: Slight	879	870	881	890	883	858	848	813	810	793	769	715	699
Salford: Total	963	957	966	969	956	930	919	878	879	864	839	788	767
Stockport: Killed	11	12	8	7	6	6	7	7	7	6	6	5	7
Stockport: Serious	58	60	56	58	59	58	64	66	60	63	63	61	63
Stockport: Slight	674	663	664	640	626	634	645	631	633	607	611	617	617
Stockport: Total	743	735	728	705	691	698	716	704	700	676	680	683	687
Tameside: Killed	4	4	3	4	4	4	4	4	5	4	2	3	3
Tameside: Serious	56	54	49	49	48	48	45	45	47	50	50	50	52
Tameside: Slight	597	615	621	622	601	617	614	588	574	566	572	543	546
Tameside: Total	657	673	673	675	653	669	663	637	626	620	624	596	601
Trafford: Killed	4	3	3	3	5	5	6	5	5	5	5	4	4
Trafford: Serious	49	47	49	50	48	49	46	44	46	44	49	47	47
Trafford: Slight	660	640	629	601	588	576	569	562	570	564	571	561	540
Trafford: Total	713	690	681	654	641	630	621	611	621	613	625	612	591
Wigan: Killed	9	10	11	10	9	10	10	9	8	7	7	7	6
Wigan: Serious	92	90	88	84	88	91	87	79	75	73	60	62	61
Wigan: Slight	877	884	864	829	834	817	793	744	740	693	669	647	641
Wigan: Total	978	984	963	923	931	918	890	832	823	773	736	716	708
Total	9762	9725	9652	9573	9442	9399	9303	8981	8953	8823	8661	8385	8223

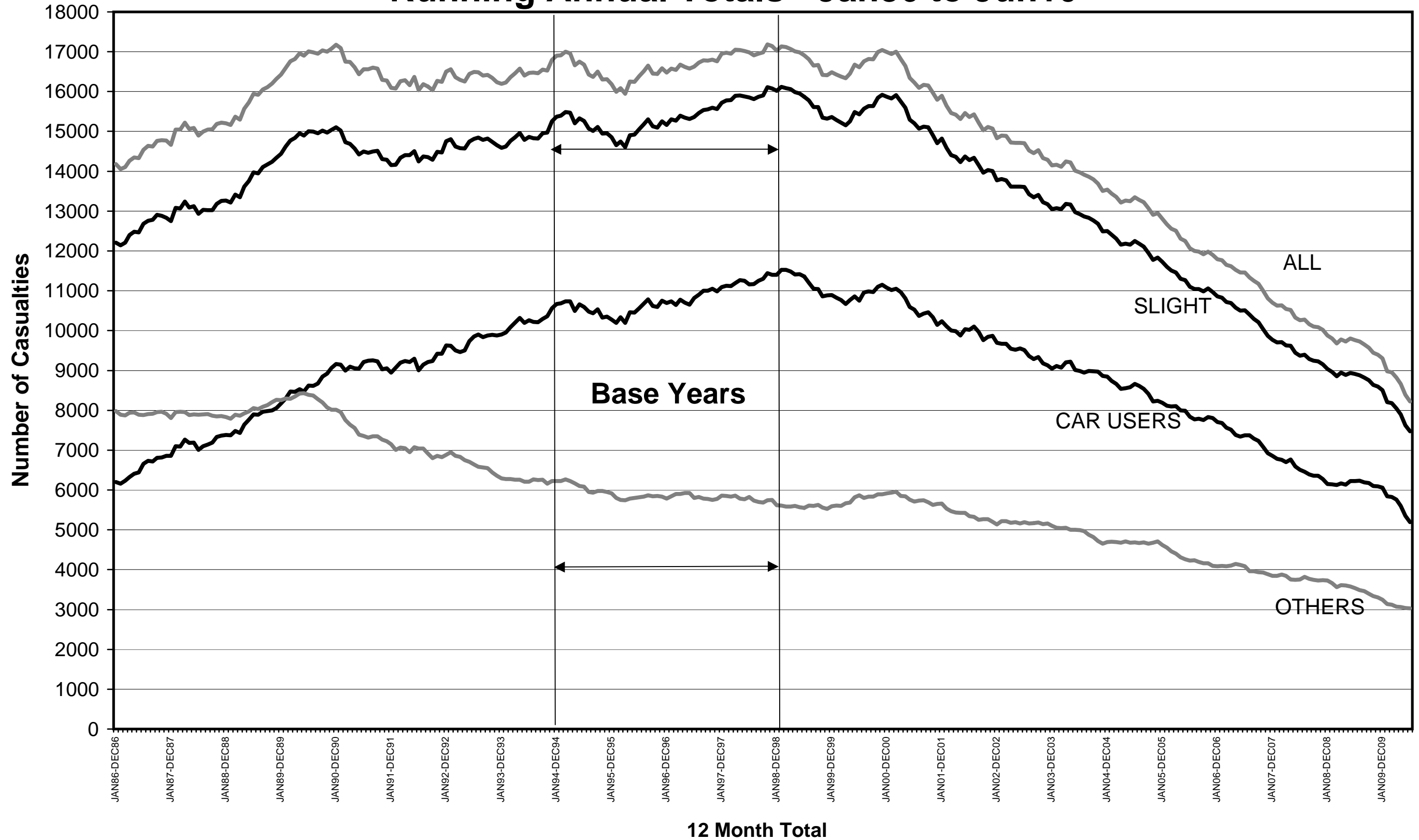
Greater Manchester Killed & Seriously Injured Casualties

Running Annual Totals - Jan86 to Jun10



Greater Manchester Casualties by Casualty Class

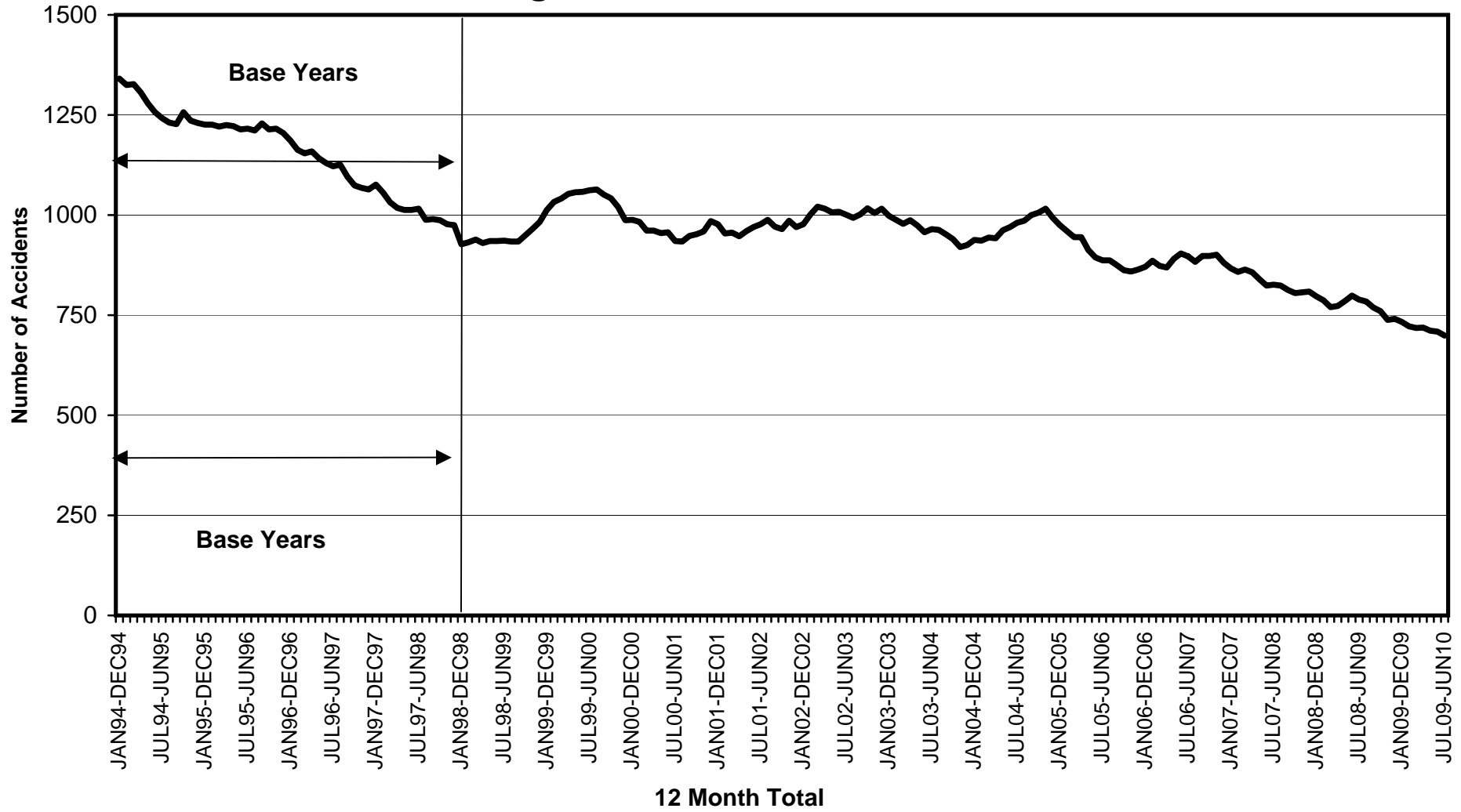
Running Annual Totals - Jan86 to Jun10



RUNNING ANNUAL TOTALS – ROAD ACCIDENTS

Greater Manchester Running Annual Accident Totals 2008 to 2010													
12 Month Total	Jul 08	Aug 08	Sep 08	Oct 08	Nov 08	Dec 08	Jan 09	Feb 09	Mar 09	Apr 09	May 09	Jun 09	Jul 09
	Jun 09	Jul 09	Aug 09	Sep 09	Oct 09	Nov 09	Dec 09	Jan 10	Feb 10	Mar 10	Apr 10	May 10	Jun 10
Accident Severity													
Killed	66	67	64	67	69	68	69	61	62	60	57	59	56
Serious	723	717	705	693	669	673	664	661	656	659	654	650	643
Slight	6070	6069	6028	5933	5856	5843	5777	5578	5559	5459	5398	5257	5180
Total	6859	6853	6797	6693	6594	6584	6510	6300	6277	6178	6109	5966	5879
District: Accidents													
Bolton: Killed	10	9	10	10	11	10	9	7	6	8	8	7	7
Bolton: Serious	68	65	58	56	54	55	58	56	61	61	64	65	65
Bolton: Slight	605	619	613	600	595	589	585	561	556	551	540	534	541
Bolton: Total	683	693	681	666	660	654	652	624	623	620	612	606	613
Bury: Killed	4	4	3	3	3	3	3	2	2	4	4	6	5
Bury: Serious	46	50	51	56	58	58	61	64	59	65	67	67	67
Bury: Slight	423	429	411	404	397	402	400	391	396	383	380	370	350
Bury: Total	473	483	465	463	458	463	464	457	457	452	451	443	422
Manchester: Killed	11	11	12	13	14	13	13	12	14	13	11	12	11
Manchester: Serious	175	173	182	176	165	171	162	161	157	158	158	149	142
Manchester: Slight	1555	1545	1556	1559	1537	1551	1532	1469	1474	1466	1446	1400	1397
Manchester: Total	1741	1729	1750	1748	1716	1735	1707	1642	1645	1637	1615	1561	1550
Oldham: Killed	6	7	7	10	10	9	10	10	10	9	10	11	10
Oldham: Serious	56	53	55	51	49	50	51	53	56	49	50	51	57
Oldham: Slight	451	442	434	423	420	419	410	405	397	393	403	402	405
Oldham: Total	513	502	496	484	479	478	471	468	463	451	463	464	472
Rochdale: Killed	4	4	3	3	3	3	2	1	1	0	0	0	0
Rochdale: Serious	72	70	65	65	56	52	51	54	53	53	47	48	44
Rochdale: Slight	476	463	447	443	431	434	428	407	410	397	387	377	348
Rochdale: Total	552	537	515	511	490	489	481	462	464	450	434	425	392
Salford: Killed	4	4	4	4	5	6	6	5	5	5	5	5	4
Salford: Serious	75	78	72	66	60	58	57	54	58	59	59	62	58
Salford: Slight	587	576	580	587	593	579	565	546	541	531	521	499	486
Salford: Total	666	658	656	657	658	643	628	605	604	595	585	566	548
Stockport: Killed	10	11	8	7	6	6	7	7	7	6	6	5	7
Stockport: Serious	53	55	52	56	57	55	61	63	58	60	60	58	59
Stockport: Slight	506	502	504	484	472	473	479	465	459	441	448	450	449
Stockport: Total	569	568	564	547	535	534	547	535	524	507	514	513	515
Tameside: Killed	4	4	3	4	4	4	4	4	5	4	2	3	3
Tameside: Serious	51	49	46	46	45	46	42	42	43	45	44	46	48
Tameside: Slight	401	425	428	422	404	408	408	397	387	388	385	368	367
Tameside: Total	456	478	477	472	453	458	454	443	435	437	431	417	418
Trafford: Killed	4	3	3	3	4	4	5	4	4	4	4	3	3
Trafford: Serious	46	45	47	48	47	48	45	44	45	43	47	45	45
Trafford: Slight	468	460	459	443	439	433	432	425	428	420	419	404	383
Trafford: Total	518	508	509	494	490	485	482	473	477	467	470	452	431
Wigan: Killed	9	10	11	10	9	10	10	9	8	7	7	7	6
Wigan: Serious	81	79	77	73	78	80	76	70	66	66	58	59	58
Wigan: Slight	598	608	596	568	568	555	538	512	511	489	469	453	454
Wigan: Total	688	697	684	651	655	645	624	591	585	562	534	519	518
Total	6859	6853	6797	6693	6594	6584	6510	6300	6277	6178	6109	5966	5879

Greater Manchester Killed & Seriously Injured Accidents Running Annual Totals - Jan94 to Jun10



Greater Manchester Slight Accidents Running Annual Totals - Jan94 to Jun10

