



## LTP2 FACTSHEET

### GREATER MANCHESTER TRANSPORTATION UNIT

GREATER MANCHESTER KSI CASUALTY STATISTICS

January 2008 - December 2010

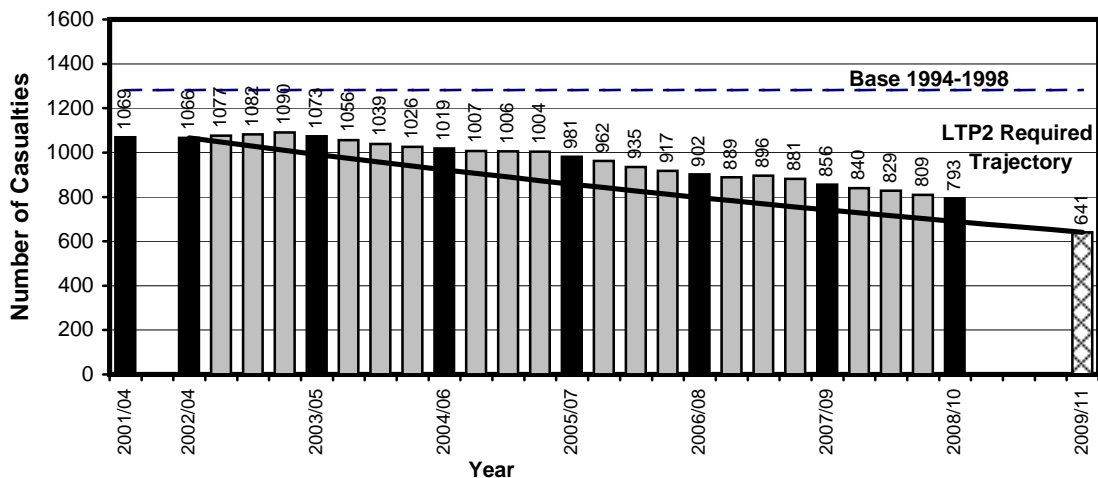
#### KSI Casualties: 50% casualty reduction on 1994-1998 baseline by 2010

Greater Manchester KSI Casualties, Latest 3-Year Average, from January 08 to December 10

Annual Average Target (LTP2) and Actual Averages for KSI Casualties				
Year	Annual Average		Index	
	Trajectory	Actual	Trajectory	Actual
1994-1998 baseline		1281		100
2001-2004: baseline		1069		83
2003: average 2002/2003/2004	1066	1066	83	83
2004: average 2003/2004/2005	991	1073	77	84
2005: average 2004/2005/2006	922	1019	72	80
2006: average 2005/2006/2007	857	981	67	77
2007: average 2006/2007/2008	797	902	62	70
2008: average 2007/2008/2009	741	856	58	67
2009: average 2008/2009/2010	689	793	54	62
Target 2010: average 2009/2010/2011	641		50	

Note: The casualties for the target year will not be known until February/March 2012 (when the full 2011 data is available)

**Annual Average Target (LTP2) and Actual Averages for KSI Casualties, Latest 3-Year Average January 2008- December 2010, Greater Manchester**



Base = 1281 Casualties (1994-1998 Average)  
2009/11 bar shows target set at 50% reduction on base



## LTP2 FACTSHEET

### GREATER MANCHESTER TRANSPORTATION UNIT

#### GREATER MANCHESTER CHILD KSI CASUALTY STATISTICS

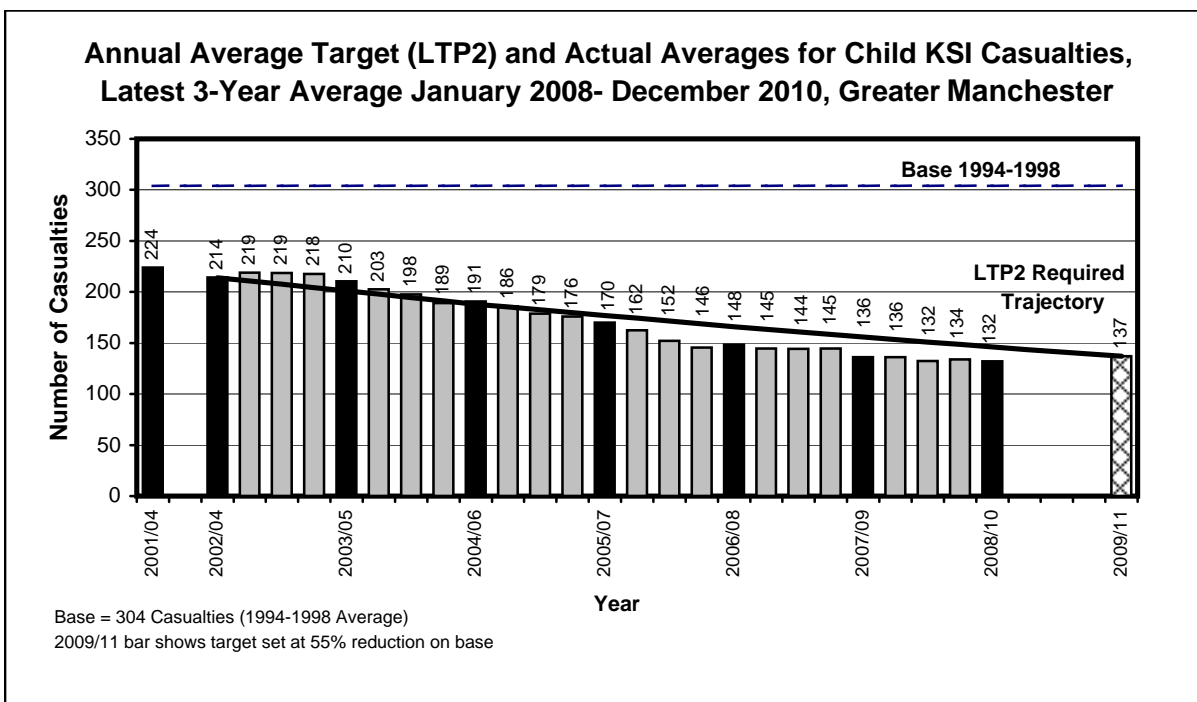
January 2008 - December 2010

### Child KSI Casualties: 55% casualty reduction on 1994-1998 baseline by 2010

Greater Manchester KSI Casualties, Latest 3-Year Average, from January 08 to December 10

Annual Average Target (LTP2) and Actual Averages for Child KSI Casualties				
Year	Annual Average		Index	
	Trajectory	Actual	Trajectory	Actual
1994-1998 baseline		304		100
2001-2004: baseline		224		74
2003: average 2002/2003/2004	214	214	70	70
2004: average 2003/2004/2005	201	210	66	69
2005: average 2004/2005/2006	188	191	62	63
2006: average 2005/2006/2007	177	170	58	56
2007: average 2006/2007/2008	166	148	55	49
2008: average 2007/2008/2009	156	136	51	45
2009: average 2008/2009/2010	146	132	48	43
Target 2010: average 2009/2010/2011	137		45	

Note: The casualties for the target year will not be known until February/March 2012 (when the full 2011 data is available)





## LTP2 FACTSHEET

### GREATER MANCHESTER TRANSPORTATION UNIT

#### GREATER MANCHESTER SLIGHTLY INJURED CASUALTY STATISTICS

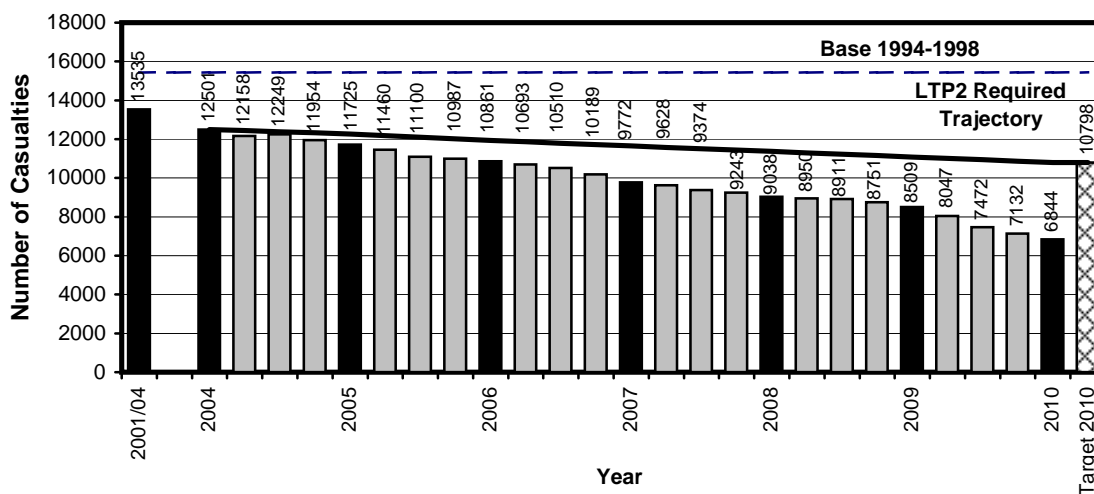
January 2010 - December 2010

#### Slight Casualties: 30% casualty reduction on 1994-1998 baseline by 2010

Greater Manchester Slight Casualties, Latest 12 Months, from January 10 to December 10

Year	Number		Index	
	Trajectory	Actual	Trajectory	Actual
1994-1998 baseline		15426		100
2001-2004: baseline		13535		88
2004	12501	12501	81	81
2005	12271	11725	80	76
2006	11933	10861	77	70
2007	11650	9772	76	63
2008	11366	9038	74	59
2009	11082	8509	72	55
2010	10798	6844	70	44

Target (LTP2) and Actual Numbers for Slight Casualties,  
Latest 12 Months January 2010- December 2010, Greater Manchester



Base = 15426 Casualties (1994-1998 Average)  
Target 2010 bar shows target set at 30% reduction on base

# Greater Manchester Transportation Unit



## PEDESTRIAN AND PEDAL CYCLE FACTSHEET

GREATER MANCHESTER PEDESTRIAN AND PEDAL CYCLE CASUALTY STATISTICS

January 09 - December 09, January 10 - December 10, Base

### Greater Manchester Pedestrian Casualties by Road Class

January 09 - December 09, January 10 - December 10, Base

Road Class	Base <sup>(1)</sup> Ave 1994-98	Jan 09 - Dec 09	Jan 10 - Dec 10	% Change ( 10 - 10/ 09 - 09 )	% Change ( 10 - 10 /Base )
Motorway <sup>(2)</sup>	6	4	3	-25.0	-50.0
A Class Roads <sup>(3)</sup>	1160	559	511	-8.6	-55.9
B Class Roads	382	204	172	-15.7	-55.0
Minor Roads	1391	669	628	-6.1	-54.9
Non-Motorways	2933	1432	1311	-8.4	-55.3
<b>Total</b>	<b>2939</b>	<b>1436</b>	<b>1314</b>	<b>-8.5</b>	<b>-55.3</b>

### Greater Manchester Pedal Cycle Casualties by Road Class

January 09 - December 09, January 10 - December 10, Base

Road Class	Base <sup>(1)</sup> Ave 1994-98	Jan 09 - Dec 09	Jan 10 - Dec 10	% Change ( 10 - 10/ 09 - 09 )	% Change ( 10 - 10 /Base )
Motorway <sup>(2)</sup>	2	0	1	-(4)	-(4)
A Class Roads <sup>(3)</sup>	446	351	339	-3.4	-24.0
B Class Roads	163	121	111	-8.3	-31.9
Minor Roads	576	280	282	0.7	-51.0
Non-Motorways	1186	752	732	-2.7	-38.3
<b>Total</b>	<b>1188</b>	<b>752</b>	<b>733</b>	<b>-2.5</b>	<b>-38.3</b>

**Notes :-**

1. Base figures are rounded to the nearest whole number
2. Motorways include the A627(M) but exclude A57(M) and A6144(M). The A6144(M) was reclassified as A6144 on 24 May 2006
3. A Roads include A(M) and A(T) roads except A627(M)
4. Casualty numbers too small to make % changes meaningful

<b>Progress Towards LTP2 Targets by District</b>									
<b>District</b>	<b>KSI</b>			<b>Child KSI</b>			<b>Slight</b>		
	<b>Base</b>	<b>Ave. Jan 08 to Dec 10</b>	<b>Target</b>	<b>Base</b>	<b>Ave. Jan 08 to Dec 10</b>	<b>Target</b>	<b>Base</b>	<b>Oct 10 to Dec 10</b>	<b>Target</b>
Bolton	136	84	68	36	17	16	1537	728	1076
Bury	72	57	36	15	9	7	954	416	668
Manchester	294	181	147	71	29	32	3358	1796	2350
Oldham	109	71	54	29	16	13	1262	574	884
Rochdale	107	62	53	28	9	13	1209	550	846
Salford	126	78	63	25	9	11	1689	600	1182
Stockport	111	68	55	16	8	7	1483	588	1038
Tameside	106	54	53	31	12	14	1076	457	753
Trafford	74	52	37	18	6	8	1124	519	787
Wigan	147	85	73	37	15	17	1735	616	1214
<b>Greater Manchester</b>	<b>1281</b>	<b>793</b>	<b>641</b>	<b>304</b>	<b>132</b>	<b>137</b>	<b>15426</b>	<b>6844</b>	<b>10798</b>

**Note: Base = Average 1994-1998**

<b>Index of Progress Towards LTP2 Targets by District</b>									
<b>District</b>	<b>KSI</b>			<b>Child KSI</b>			<b>Slight</b>		
	<b>Base</b>	<b>Ave. Jan 08 to Dec 10</b>	<b>Target</b>	<b>Base</b>	<b>Ave. Jan 08 to Dec 10</b>	<b>Target</b>	<b>Base</b>	<b>Oct 10 to Dec 10</b>	<b>Target</b>
Bolton	100	62	50	100	46	45	100	47	70
Bury	100	79	50	100	61	45	100	44	70
Manchester	100	62	50	100	41	45	100	53	70
Oldham	100	66	50	100	57	45	100	45	70
Rochdale	100	58	50	100	34	45	100	45	70
Salford	100	62	50	100	38	45	100	36	70
Stockport	100	62	50	100	53	45	100	40	70
Tameside	100	51	50	100	40	45	100	42	70
Trafford	100	70	50	100	36	45	100	46	70
Wigan	100	58	50	100	41	45	100	36	70
<b>Greater Manchester</b>	<b>100</b>	<b>62</b>	<b>50</b>	<b>100</b>	<b>43</b>	<b>45</b>	<b>100</b>	<b>44</b>	<b>70</b>

**Note: Base = Average 1994-1998 = 100**

**RUNNING ANNUAL TOTALS - ROAD CASUALTIES**

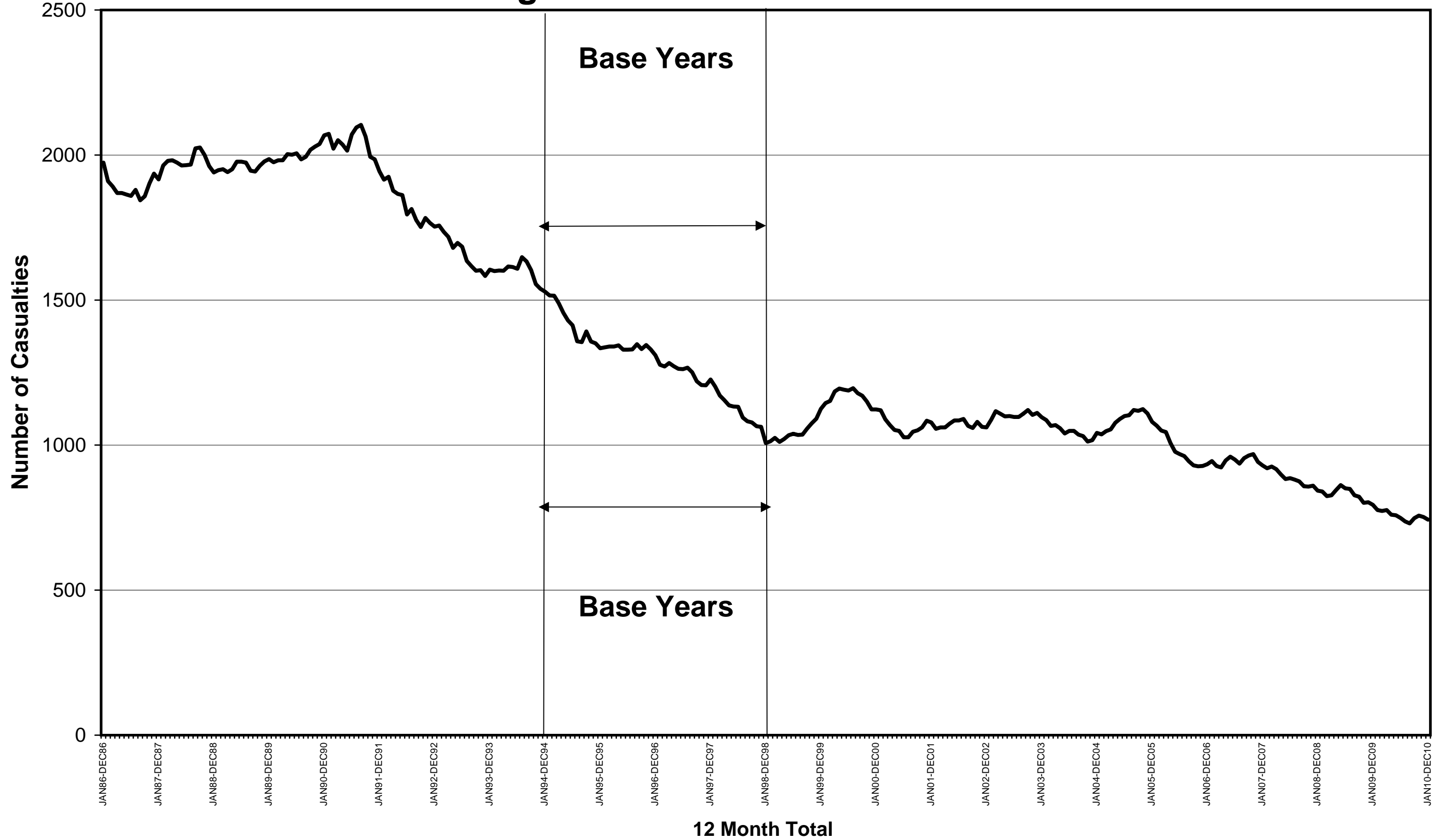
<b>Greater Manchester Running Annual Casualty Totals 2009 to 2010</b>													
<b>12 Month Total</b>	<b>Jan 09 - Dec 09</b>	<b>Feb 09 - Jan 10</b>	<b>Mar 09 - Feb 10</b>	<b>Apr 09 - Mar 10</b>	<b>May 09 - Apr 10</b>	<b>Jun 09 - May 10</b>	<b>Jul 09 - Jun 10</b>	<b>Aug 09 - Jul 10</b>	<b>Sep 09 - Aug 10</b>	<b>Oct 09 - Sep 10</b>	<b>Nov 09 - Oct 10</b>	<b>Dec 09 - Nov 10</b>	<b>Jan 10 - Dec 10</b>
<b>Casualty Severity</b>													
Killed	73	64	65	63	60	62	59	59	56	53	53	57	54
Serious	721	712	708	713	700	696	690	678	674	695	704	695	689
Slight	8509	8205	8180	8047	7900	7626	7472	7304	7204	7132	7104	7008	6844
<b>Total</b>	<b>9303</b>	<b>8981</b>	<b>8953</b>	<b>8823</b>	<b>8660</b>	<b>8384</b>	<b>8221</b>	<b>8041</b>	<b>7934</b>	<b>7880</b>	<b>7861</b>	<b>7760</b>	<b>7587</b>
<b>KSI</b>	<b>794</b>	<b>776</b>	<b>773</b>	<b>776</b>	<b>760</b>	<b>758</b>	<b>749</b>	<b>737</b>	<b>730</b>	<b>748</b>	<b>757</b>	<b>752</b>	<b>743</b>
<b>Casualty Class</b>													
Pedestrians	1436	1381	1378	1360	1372	1352	1356	1331	1306	1341	1365	1336	1314
Pedal Cyclists	752	736	731	720	727	738	736	734	733	744	744	752	733
Motor Cyclists	518	501	505	498	484	487	496	504	515	506	491	491	479
Car Users	6059	5846	5829	5755	5601	5351	5191	5032	4933	4852	4833	4755	4633
Others	538	517	510	490	476	456	442	440	447	437	428	426	428
<b>Total</b>	<b>9303</b>	<b>8981</b>	<b>8953</b>	<b>8823</b>	<b>8660</b>	<b>8384</b>	<b>8221</b>	<b>8041</b>	<b>7934</b>	<b>7880</b>	<b>7861</b>	<b>7760</b>	<b>7587</b>
<b>Child (0-15) Casualty Severity</b>													
Killed	6	5	5	5	5	5	4	4	3	4	3	3	3
Serious	123	123	125	131	124	126	119	117	118	122	130	128	125
Slight	1072	1044	1031	1017	1019	1009	979	972	949	955	974	974	935
<b>Total</b>	<b>1201</b>	<b>1172</b>	<b>1161</b>	<b>1153</b>	<b>1148</b>	<b>1140</b>	<b>1102</b>	<b>1093</b>	<b>1070</b>	<b>1081</b>	<b>1107</b>	<b>1105</b>	<b>1063</b>
<b>KSI</b>	<b>129</b>	<b>128</b>	<b>130</b>	<b>136</b>	<b>129</b>	<b>131</b>	<b>123</b>	<b>121</b>	<b>121</b>	<b>126</b>	<b>133</b>	<b>131</b>	<b>128</b>

**Notes:** Car – From 1/4/99 this definition was revised to exclude invalid tricycles and motor caravans.  
KSI – Killed and Seriously Injured

Greater Manchester Running Annual Casualty Totals 2009 to 2010													
12 Month Total	Jan 09 - Dec 09	Feb 09 - Jan 10	Mar 09 - Feb 10	Apr 09 - Mar 10	May 09 - Apr 10	Jun 09 - May 10	Jul 09 - Jun 10	Aug 09 - Jul 10	Sep 09 - Aug 10	Oct 09 - Sep 10	Nov 09 - Oct 10	Dec 09 - Nov 10	Jan 10 - Dec 10
<b>District: Casualties</b>													
Bolton: Killed	11	8	7	9	9	8	8	8	7	6	7	7	7
Bolton: Serious	66	62	67	67	70	70	70	75	81	85	94	91	87
Bolton: Slight	920	881	880	883	834	815	809	771	758	741	749	757	728
<b>Bolton: Total</b>	<b>997</b>	<b>951</b>	<b>954</b>	<b>959</b>	<b>913</b>	<b>893</b>	<b>887</b>	<b>854</b>	<b>846</b>	<b>832</b>	<b>850</b>	<b>855</b>	<b>822</b>
Bury: Killed	3	2	2	4	4	6	5	5	4	4	5	5	5
Bury: Serious	63	66	61	68	69	70	70	64	61	55	58	56	53
Bury: Slight	635	626	626	610	609	578	544	502	507	477	459	436	416
<b>Bury: Total</b>	<b>701</b>	<b>694</b>	<b>689</b>	<b>682</b>	<b>682</b>	<b>654</b>	<b>619</b>	<b>571</b>	<b>572</b>	<b>536</b>	<b>522</b>	<b>497</b>	<b>474</b>
Manchester: Killed	13	12	14	13	11	12	11	11	10	11	12	13	11
Manchester: Serious	174	173	168	169	166	157	148	147	144	154	155	155	155
Manchester: Slight	2217	2115	2111	2117	2072	1978	1936	1917	1863	1899	1871	1836	1796
<b>Manchester: Total</b>	<b>2404</b>	<b>2300</b>	<b>2293</b>	<b>2299</b>	<b>2249</b>	<b>2147</b>	<b>2095</b>	<b>2075</b>	<b>2017</b>	<b>2064</b>	<b>2038</b>	<b>2004</b>	<b>1962</b>
Oldham: Killed	11	11	11	10	11	12	11	10	11	8	8	10	10
Oldham: Serious	57	60	63	56	57	60	67	68	74	75	74	71	69
Oldham: Slight	627	625	617	607	612	615	630	608	595	591	602	592	574
<b>Oldham: Total</b>	<b>695</b>	<b>696</b>	<b>691</b>	<b>673</b>	<b>680</b>	<b>687</b>	<b>708</b>	<b>686</b>	<b>680</b>	<b>674</b>	<b>684</b>	<b>673</b>	<b>653</b>
Rochdale: Killed	2	1	1	0	0	0	0	0	0	0	1	2	2
Rochdale: Serious	54	57	57	57	51	52	49	48	45	46	47	46	45
Rochdale: Slight	641	620	619	607	582	557	510	524	542	528	556	567	550
<b>Rochdale: Total</b>	<b>697</b>	<b>678</b>	<b>677</b>	<b>664</b>	<b>633</b>	<b>609</b>	<b>559</b>	<b>572</b>	<b>587</b>	<b>574</b>	<b>604</b>	<b>615</b>	<b>597</b>
Salford: Killed	6	5	5	5	5	5	4	4	4	4	4	4	4
Salford: Serious	65	60	64	66	65	68	65	59	52	58	62	62	68
Salford: Slight	848	813	810	793	769	715	698	679	655	634	632	620	600
<b>Salford: Total</b>	<b>919</b>	<b>878</b>	<b>879</b>	<b>864</b>	<b>839</b>	<b>788</b>	<b>767</b>	<b>742</b>	<b>711</b>	<b>696</b>	<b>698</b>	<b>686</b>	<b>672</b>
Stockport: Killed	7	7	7	6	6	5	7	6	6	6	5	6	5
Stockport: Serious	64	66	60	63	63	60	61	57	60	56	54	55	52
Stockport: Slight	645	631	633	607	610	617	618	607	602	600	601	599	588
<b>Stockport: Total</b>	<b>716</b>	<b>704</b>	<b>700</b>	<b>676</b>	<b>679</b>	<b>682</b>	<b>686</b>	<b>670</b>	<b>668</b>	<b>662</b>	<b>660</b>	<b>660</b>	<b>645</b>
Tameside: Killed	4	4	5	4	2	3	3	4	5	4	4	4	5
Tameside: Serious	45	45	47	50	50	50	52	51	51	53	53	53	53
Tameside: Slight	614	588	574	566	572	543	546	527	508	494	505	478	457
<b>Tameside: Total</b>	<b>663</b>	<b>637</b>	<b>626</b>	<b>620</b>	<b>624</b>	<b>596</b>	<b>601</b>	<b>582</b>	<b>564</b>	<b>551</b>	<b>562</b>	<b>535</b>	<b>515</b>
Trafford: Killed	6	5	5	5	5	4	4	4	3	3	1	1	0
Trafford: Serious	46	44	46	44	49	47	47	49	48	51	50	49	50
Trafford: Slight	569	562	570	564	571	561	540	546	549	551	531	523	519
<b>Trafford: Total</b>	<b>621</b>	<b>611</b>	<b>621</b>	<b>613</b>	<b>625</b>	<b>612</b>	<b>591</b>	<b>599</b>	<b>600</b>	<b>605</b>	<b>582</b>	<b>573</b>	<b>569</b>
Wigan: Killed	10	9	8	7	7	7	6	7	6	7	6	5	5
Wigan: Serious	87	79	75	73	60	62	61	60	58	62	57	57	57
Wigan: Slight	793	744	740	693	669	647	641	623	625	617	598	600	616
<b>Wigan: Total</b>	<b>890</b>	<b>832</b>	<b>823</b>	<b>773</b>	<b>736</b>	<b>716</b>	<b>708</b>	<b>690</b>	<b>689</b>	<b>686</b>	<b>661</b>	<b>662</b>	<b>678</b>
<b>Total</b>	<b>9303</b>	<b>8981</b>	<b>8953</b>	<b>8823</b>	<b>8660</b>	<b>8384</b>	<b>8221</b>	<b>8041</b>	<b>7934</b>	<b>7880</b>	<b>7861</b>	<b>7760</b>	<b>7587</b>

# Greater Manchester Killed & Seriously Injured Casualties

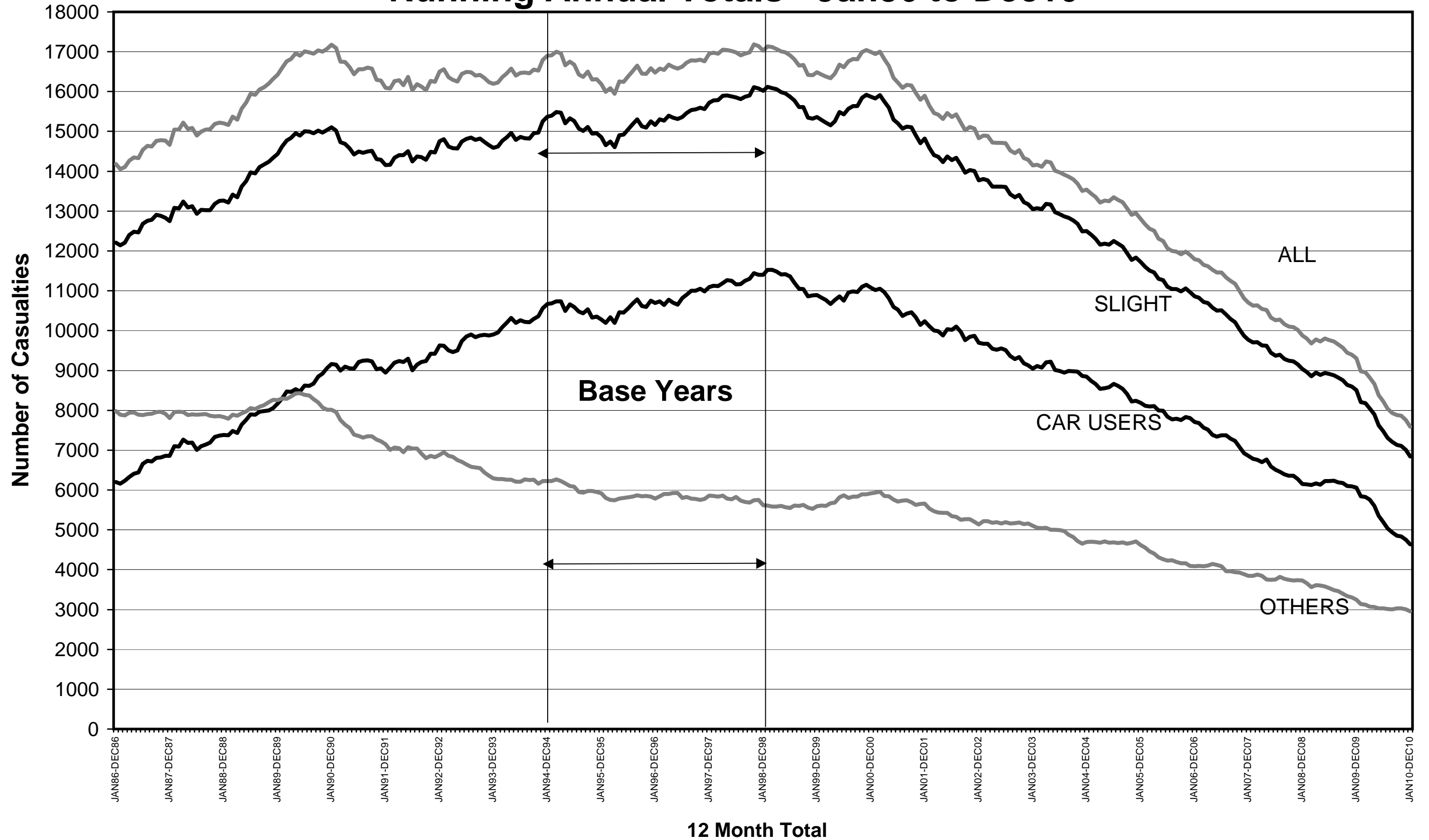
## Running Annual Totals - Jan86 to Dec10





# Greater Manchester Casualties by Casualty Class

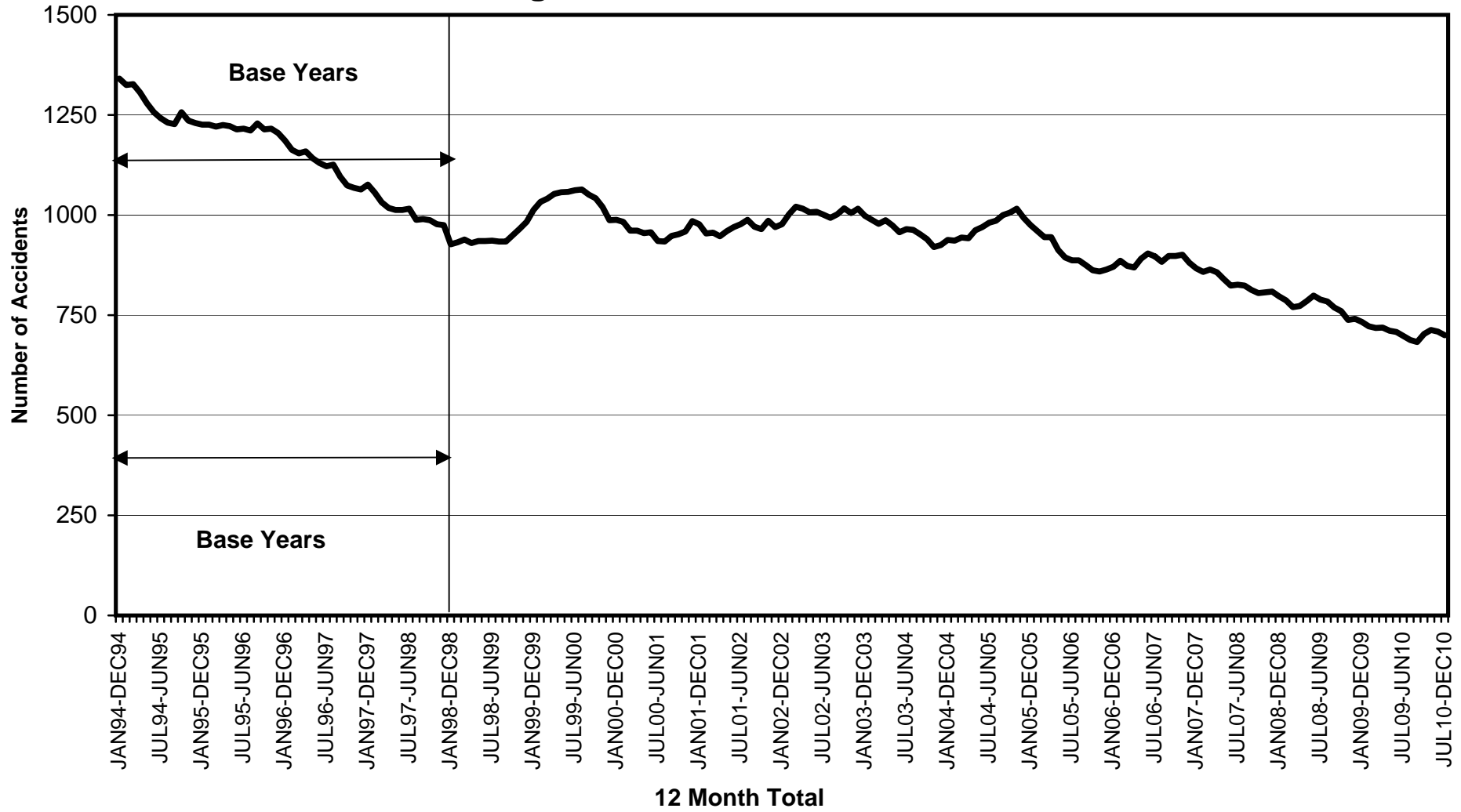
## Running Annual Totals - Jan86 to Dec10



RUNNING ANNUAL TOTALS – ROAD ACCIDENTS

Greater Manchester Running Annual Accident Totals 2009 to 2010													
12 Month Total	Jan 09 - Dec 09	Feb 09 - Jan 10	Mar 09 - Feb 10	Apr 09 - Mar 10	May 09 - Apr 10	Jun 09 - May 10	Jul 09 - Jun 10	Aug 09 - Jul 10	Sep 09 - Aug 10	Oct 09 - Sep 10	Nov 09 - Oct 10	Dec 09 - Nov 10	Jan 10 - Dec 10
<b>Accident Severity</b>													
Killed	69	61	62	60	57	59	56	56	52	51	52	56	53
Serious	664	661	656	659	654	649	642	632	631	652	661	653	647
Slight	5777	5578	5559	5459	5397	5257	5179	5069	5000	4952	4945	4851	4744
<b>Total</b>	<b>6510</b>	<b>6300</b>	<b>6277</b>	<b>6178</b>	<b>6108</b>	<b>5965</b>	<b>5877</b>	<b>5757</b>	<b>5683</b>	<b>5655</b>	<b>5658</b>	<b>5560</b>	<b>5444</b>
<b>District: Accidents</b>													
Bolton: Killed	9	7	6	8	8	7	7	7	6	6	7	7	7
Bolton: Serious	58	56	61	61	64	65	65	71	74	78	84	82	78
Bolton: Slight	585	561	556	551	540	534	541	519	517	509	511	512	494
<b>Bolton: Total</b>	<b>652</b>	<b>624</b>	<b>623</b>	<b>620</b>	<b>612</b>	<b>606</b>	<b>613</b>	<b>597</b>	<b>597</b>	<b>593</b>	<b>602</b>	<b>601</b>	<b>579</b>
Bury: Killed	3	2	2	4	4	6	5	5	4	4	5	5	5
Bury: Serious	61	64	59	65	67	67	67	62	59	53	56	54	50
Bury: Slight	400	391	396	383	380	370	350	330	340	335	323	302	291
<b>Bury: Total</b>	<b>464</b>	<b>457</b>	<b>457</b>	<b>452</b>	<b>451</b>	<b>443</b>	<b>422</b>	<b>397</b>	<b>403</b>	<b>392</b>	<b>384</b>	<b>361</b>	<b>346</b>
Manchester: Killed	13	12	14	13	11	12	11	11	10	11	12	13	11
Manchester: Serious	162	161	157	158	158	149	142	142	139	148	151	151	151
Manchester: Slight	1532	1469	1474	1466	1446	1400	1396	1384	1341	1338	1331	1291	1263
<b>Manchester: Total</b>	<b>1707</b>	<b>1642</b>	<b>1645</b>	<b>1637</b>	<b>1615</b>	<b>1561</b>	<b>1549</b>	<b>1537</b>	<b>1490</b>	<b>1497</b>	<b>1494</b>	<b>1455</b>	<b>1425</b>
Oldham: Killed	10	10	10	9	10	11	10	9	9	7	7	9	9
Oldham: Serious	51	53	56	49	50	51	57	56	62	67	66	62	60
Oldham: Slight	410	405	397	393	403	402	405	385	383	375	384	374	364
<b>Oldham: Total</b>	<b>471</b>	<b>468</b>	<b>463</b>	<b>451</b>	<b>463</b>	<b>464</b>	<b>472</b>	<b>450</b>	<b>454</b>	<b>449</b>	<b>457</b>	<b>445</b>	<b>433</b>
Rochdale: Killed	2	1	1	0	0	0	0	0	0	0	1	2	2
Rochdale: Serious	51	54	53	53	47	48	44	43	40	41	43	42	41
Rochdale: Slight	428	407	410	397	387	377	348	357	358	354	368	371	361
<b>Rochdale: Total</b>	<b>481</b>	<b>462</b>	<b>464</b>	<b>450</b>	<b>434</b>	<b>425</b>	<b>392</b>	<b>400</b>	<b>398</b>	<b>395</b>	<b>412</b>	<b>415</b>	<b>404</b>
Salford: Killed	6	5	5	5	5	5	4	4	4	4	4	4	4
Salford: Serious	57	54	58	59	59	62	59	53	51	57	61	61	67
Salford: Slight	565	546	541	531	521	499	485	481	469	457	446	436	426
<b>Salford: Total</b>	<b>628</b>	<b>605</b>	<b>604</b>	<b>595</b>	<b>585</b>	<b>566</b>	<b>548</b>	<b>538</b>	<b>524</b>	<b>518</b>	<b>511</b>	<b>501</b>	<b>497</b>
Stockport: Killed	7	7	7	6	6	5	7	6	6	6	5	6	5
Stockport: Serious	61	63	58	60	60	57	57	54	57	53	51	52	49
Stockport: Slight	479	465	459	441	447	450	450	447	443	441	440	433	425
<b>Stockport: Total</b>	<b>547</b>	<b>535</b>	<b>524</b>	<b>507</b>	<b>513</b>	<b>512</b>	<b>514</b>	<b>507</b>	<b>506</b>	<b>500</b>	<b>496</b>	<b>491</b>	<b>479</b>
Tameside: Killed	4	4	5	4	2	3	3	4	5	4	4	4	5
Tameside: Serious	42	42	43	45	44	46	48	47	47	47	47	47	48
Tameside: Slight	408	397	387	388	385	368	367	346	336	330	336	320	307
<b>Tameside: Total</b>	<b>454</b>	<b>443</b>	<b>435</b>	<b>437</b>	<b>431</b>	<b>417</b>	<b>418</b>	<b>397</b>	<b>388</b>	<b>381</b>	<b>387</b>	<b>371</b>	<b>360</b>
Trafford: Killed	5	4	4	4	4	3	3	3	2	2	1	1	0
Trafford: Serious	45	44	45	43	47	45	45	47	46	48	47	46	47
Trafford: Slight	432	425	428	420	419	404	383	383	379	379	375	373	365
<b>Trafford: Total</b>	<b>482</b>	<b>473</b>	<b>477</b>	<b>467</b>	<b>470</b>	<b>452</b>	<b>431</b>	<b>433</b>	<b>427</b>	<b>429</b>	<b>423</b>	<b>420</b>	<b>412</b>
Wigan: Killed	10	9	8	7	7	7	6	7	6	7	6	5	5
Wigan: Serious	76	70	66	66	58	59	58	57	56	60	55	56	56
Wigan: Slight	538	512	511	489	469	453	454	437	434	434	431	439	448
<b>Wigan: Total</b>	<b>624</b>	<b>591</b>	<b>585</b>	<b>562</b>	<b>534</b>	<b>519</b>	<b>518</b>	<b>501</b>	<b>496</b>	<b>501</b>	<b>492</b>	<b>500</b>	<b>509</b>
<b>Total</b>	<b>6510</b>	<b>6300</b>	<b>6277</b>	<b>6178</b>	<b>6108</b>	<b>5965</b>	<b>5877</b>	<b>5757</b>	<b>5683</b>	<b>5655</b>	<b>5658</b>	<b>5560</b>	<b>5444</b>

# Greater Manchester Killed & Seriously Injured Accidents Running Annual Totals - Jan94 to Dec10



# Greater Manchester Slight Accidents Running Annual Totals - Jan94 to Dec10

