



LTP2 FACTSHEET

GREATER MANCHESTER TRANSPORTATION UNIT

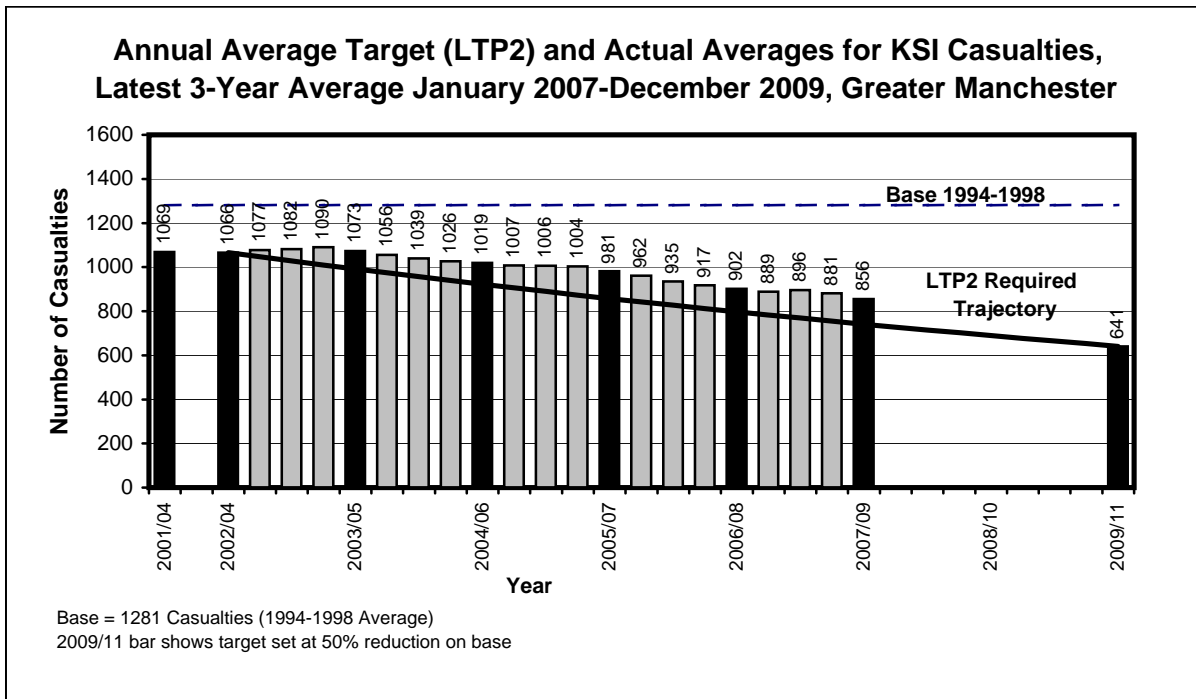
GREATER MANCHESTER KSI CASUALTY STATISTICS
January 2007 - December 2009

KSI Casualties: 50% casualty reduction on 1994-1998 baseline by 2010

Greater Manchester KSI Casualties, Latest 3-Year Average, from January 07 to December 09

Annual Average Target (LTP2) and Actual Averages for KSI Casualties				
Year	Annual Average		Index	
	Trajectory	Actual	Trajectory	Actual
1994-1998 baseline		1281		100
2001-2004: baseline		1069		83
2003: average 2002/2003/2004	1066	1066	83	83
2004: average 2003/2004/2005	991	1073	77	84
2005: average 2004/2005/2006	922	1019	72	80
2006: average 2005/2006/2007	857	981	67	77
2007: average 2006/2007/2008	797	902	62	70
2008: average 2007/2008/2009	741	856	58	67
2009: average 2008/2009/2010	689		54	
Target 2010: average 2009/2010/2011	641		50	

Note: The casualties for the target year will not be known until February/March 2012 (when the full 2011 data is available)





LTP2 FACTSHEET

GREATER MANCHESTER TRANSPORTATION UNIT

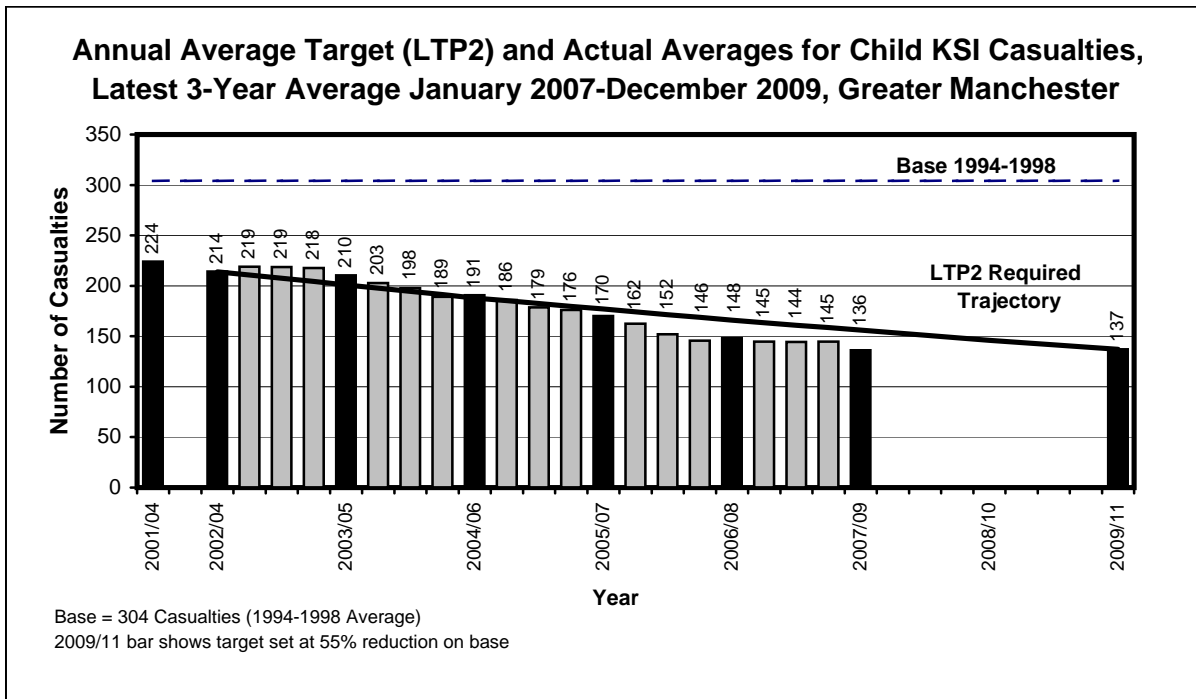
GREATER MANCHESTER CHILD KSI CASUALTY STATISTICS
January 2007 - December 2009

Child KSI Casualties: 55% casualty reduction on 1994-1998 baseline by 2010

Greater Manchester KSI Casualties, Latest 3-Year Average, from January 07 to December 09

Annual Average Target (LTP2) and Actual Averages for Child KSI Casualties				
Year	Annual Average		Index	
	Trajectory	Actual	Trajectory	Actual
1994-1998 baseline		304		100
2001-2004: baseline		224		74
2003: average 2002/2003/2004	214	214	70	70
2004: average 2003/2004/2005	201	210	66	69
2005: average 2004/2005/2006	188	191	62	63
2006: average 2005/2006/2007	177	170	58	56
2007: average 2006/2007/2008	166	148	55	49
2008: average 2007/2008/2009	156	136	51	45
2009: average 2008/2009/2010	146		48	
Target 2010: average 2009/2010/2011	137		45	

Note: The casualties for the target year will not be known until February/March 2012 (when the full 2011 data is available)





LTP2 FACTSHEET

GREATER MANCHESTER TRANSPORTATION UNIT

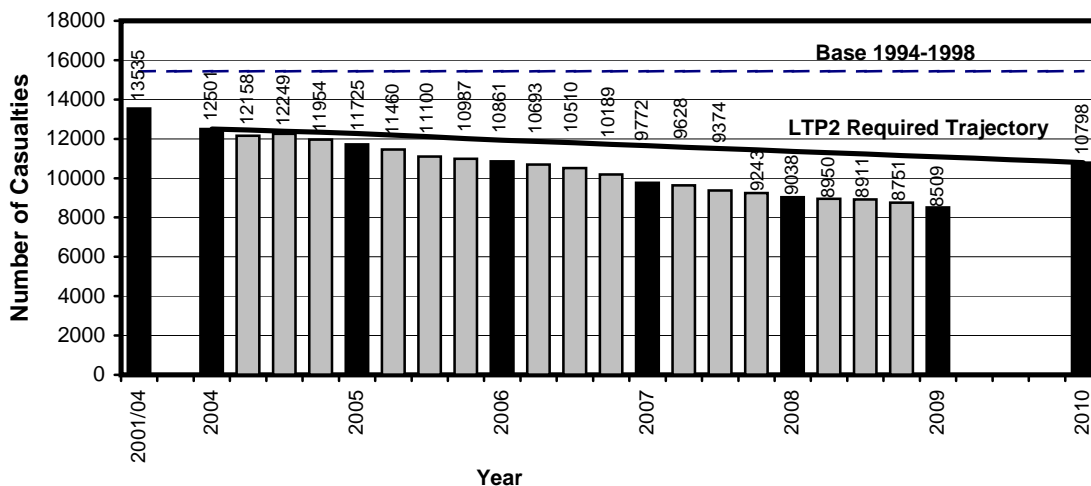
GREATER MANCHESTER SLIGHTLY INJURED CASUALTY STATISTICS
January 2009 - December 2009

Slight Casualties: 30% casualty reduction on 1994-1998 baseline by 2010

Greater Manchester Slight Casualties, Latest 12 Months, from January 09 to December 09

Target (LTP2) and Actual Numbers for Slight Casualties				
Year	Number		Index	
	Trajectory	Actual	Trajectory	Actual
1994-1998 baseline		15426		100
2001-2004: baseline		13535		88
2004	12501	12501	81	81
2005	12271	11725	80	76
2006	11933	10861	77	70
2007	11650	9772	76	63
2008	11366	9038	74	59
2009	11082	8509	72	55
Target 2010	10798		70	

Target (LTP2) and Actual Numbers for Slight Casualties,
Latest 12 Months January 2009-December 2009, Greater Manchester



Base = 15426 Casualties (1994-1998 Average)
2010 bar shows target set at 30% reduction on base

Progress Towards LTP2 Targets by District									
District	KSI			Child KSI			Slight		
	Base	Ave. Jan 07 to Dec 09	Target	Base	Ave. Jan 07 to Dec 09	Target	Base	Jan 09 to Dec 09	Target
Bolton	136	82	68	36	14	16	1537	920	1076
Bury	72	59	36	15	8	7	954	635	668
Manchester	294	195	147	71	31	32	3358	2217	2350
Oldham	109	71	54	29	17	13	1262	627	884
Rochdale	107	73	53	28	9	13	1209	641	846
Salford	126	88	63	25	12	11	1689	848	1182
Stockport	111	76	55	16	10	7	1483	645	1038
Tameside	106	60	53	31	12	14	1076	614	753
Trafford	74	54	37	18	7	8	1124	569	787
Wigan	147	97	73	37	16	17	1735	793	1214
Greater Manchester	1281	856	641	304	136	137	15426	8509	10798

Note: Base = Average 1994-1998

Index of Progress Towards LTP2 Targets by District									
District	KSI			Child KSI			Slight		
	Base	Ave. Jan 07 to Dec 09	Target	Base	Ave. Jan 07 to Dec 09	Target	Base	Jan 09 to Dec 09	Target
Bolton	100	60	50	100	38	45	100	60	70
Bury	100	82	50	100	55	45	100	67	70
Manchester	100	66	50	100	44	45	100	66	70
Oldham	100	66	50	100	58	45	100	50	70
Rochdale	100	68	50	100	31	45	100	53	70
Salford	100	70	50	100	49	45	100	50	70
Stockport	100	69	50	100	64	45	100	43	70
Tameside	100	57	50	100	40	45	100	57	70
Trafford	100	73	50	100	42	45	100	51	70
Wigan	100	66	50	100	43	45	100	46	70
Greater Manchester	100	67	50	100	45	45	100	55	70

Note: Base = Average 1994-1998 = 100

Greater Manchester Transportation Unit



PEDESTRIAN AND PEDAL CYCLE FACTSHEET

GREATER MANCHESTER PEDESTRIAN AND PEDAL CYCLE CASUALTY STATISTICS

January 08 - December 08, January 09 - December 09, Base

Greater Manchester Pedestrian Casualties by Road Class

January 08 - December 08, January 09 - December 09, Base

Road Class	Base ⁽¹⁾ Ave 1994-98	Jan 08 - Dec 08	Jan 09 - Dec 09	% Change (09 - 09/ 08 - 08)	% Change (09 - 09 /Base)
Motorway ⁽²⁾	6	11	4	-63.6	-33.3
A Class Roads ⁽³⁾	1160	651	559	-14.1	-51.8
B Class Roads	382	221	204	-7.7	-46.6
Minor Roads	1391	816	669	-18.0	-51.9
Non-Motorways	2933	1688	1432	-15.2	-51.2
Total	2939	1699	1436	-15.5	-51.1

Greater Manchester Pedal Cycle Casualties by Road Class

January 08 - December 08, January 09 - December 09, Base

Road Class	Base ⁽¹⁾ Ave 1994-98	Jan 08 - Dec 08	Jan 09 - Dec 09	% Change (09 - 09/ 08 - 08)	% Change (09 - 09 /Base)
Motorway ⁽²⁾	2	0	0	-(4)	-(4)
A Class Roads ⁽³⁾	446	331	351	6.0	-21.3
B Class Roads	163	125	121	-3.2	-25.8
Minor Roads	576	305	280	-8.2	-51.4
Non-Motorways	1186	761	752	-1.2	-36.6
Total	1188	761	752	-1.2	-36.7

Notes :-

1. Base figures are rounded to the nearest whole number
2. Motorways include the A627(M) but exclude A57(M) and A6144(M). The A6144(M) was reclassified as A6144 on 24 May 2006
3. A Roads include A(M) and A(T) roads except A627(M)
4. Casualty numbers too small to make % changes meaningful

RUNNING ANNUAL TOTALS - ROAD CASUALTIES

Greater Manchester Running Annual Casualty Totals 2008 to 2009													
12 Month Total	Jan 08 - Dec 08	Feb 08 - Jan 09	Mar 08 - Feb 09	Apr 08 - Mar 09	May 08 - Apr 09	Jun 08 - May 09	Jul 08 - Jun 09	Aug 08 - Jul 09	Sep 08 - Aug 09	Oct 08 - Sep 09	Nov 08 - Oct 09	Dec 08 - Nov 09	Jan 09 - Dec 09
Casualty Severity													
Killed	61	64	65	71	69	69	71	72	67	72	75	72	73
Serious	782	776	759	756	776	793	780	777	760	750	726	731	721
Slight	9038	8965	8857	8950	8887	8940	8911	8876	8825	8751	8641	8596	8509
Total	9881	9805	9681	9777	9732	9802	9762	9725	9652	9573	9442	9399	9303
KSI	843	840	824	827	845	862	851	849	827	822	801	803	794
Casualty Class													
Pedestrians	1699	1663	1616	1618	1613	1600	1578	1560	1552	1508	1462	1460	1436
Pedal Cyclists	761	749	734	751	758	746	752	757	766	759	774	766	752
Motor Cyclists	604	598	564	573	585	578	576	563	552	544	527	524	518
Car Users	6152	6144	6122	6164	6132	6227	6226	6236	6193	6177	6103	6094	6058
Others	665	651	645	671	644	651	630	609	589	585	576	555	539
Total	9881	9805	9681	9777	9732	9802	9762	9725	9652	9573	9442	9399	9303
Child (0-15) Casualty Severity													
Killed	2	3	3	4	4	4	4	4	5	6	7	7	6
Serious	137	135	132	130	139	136	135	133	138	140	131	124	123
Slight	1066	1064	1073	1089	1074	1063	1074	1081	1082	1087	1069	1073	1072
Total	1205	1202	1208	1223	1217	1203	1213	1218	1225	1233	1207	1204	1201
KSI	139	138	135	134	143	140	139	137	143	146	138	131	129

Notes: Car – From 1/4/99 this definition was revised to exclude invalid tricycles and motor caravans.
 KSI – Killed and Seriously Injured

Greater Manchester Running Annual Casualty Totals 2008 to 2009													
12 Month Total	Jan 08 - Dec 08	Feb 08 - Jan 09	Mar 08 - Feb 09	Apr 08 - Mar 09	May 08 - Apr 09	Jun 08 - May 09	Jul 08 - Jun 09	Aug 08 - Jul 09	Sep 08 - Aug 09	Oct 08 - Sep 09	Nov 08 - Oct 09	Dec 08 - Nov 09	Jan 09 - Dec 09
District: Casualties													
Bolton: Killed	9	12	12	12	11	11	11	10	11	12	13	12	11
Bolton: Serious	73	74	67	66	66	72	72	70	63	62	60	63	66
Bolton: Slight	963	950	917	893	920	895	892	923	925	923	940	922	920
Bolton: Total	1045	1036	996	971	997	978	975	1003	999	997	1013	997	997
Bury: Killed	4	4	4	4	4	3	4	4	3	3	3	3	3
Bury: Serious	44	45	49	50	50	53	49	54	54	59	61	61	63
Bury: Slight	639	615	606	606	580	608	620	631	622	641	626	631	635
Bury: Total	687	664	659	660	634	664	673	689	679	703	690	695	701
Manchester: Killed	11	9	9	9	10	10	11	11	12	13	14	13	13
Manchester: Serious	179	177	172	169	171	179	186	185	193	187	178	184	174
Manchester: Slight	2238	2242	2231	2254	2228	2264	2294	2262	2272	2268	2244	2251	2217
Manchester: Total	2428	2428	2412	2432	2409	2453	2491	2458	2477	2468	2436	2448	2404
Oldham: Killed	6	6	6	6	6	7	8	9	9	13	13	10	11
Oldham: Serious	61	60	60	62	64	65	60	58	60	59	57	56	57
Oldham: Slight	797	797	775	780	758	745	708	697	690	670	660	646	627
Oldham: Total	864	863	841	848	828	817	776	764	759	742	730	712	695
Rochdale: Killed	8	8	8	9	8	5	5	5	3	3	3	3	2
Rochdale: Serious	76	74	71	72	78	77	78	76	67	67	59	55	54
Rochdale: Slight	717	699	693	699	701	724	710	691	657	667	639	644	641
Rochdale: Total	801	781	772	780	787	806	793	772	727	737	701	702	697
Salford: Killed	2	2	2	3	3	4	4	4	4	4	5	6	6
Salford: Serious	90	92	83	81	79	80	80	83	81	75	68	66	65
Salford: Slight	829	832	840	847	853	882	879	870	881	890	883	858	848
Salford: Total	921	926	925	931	935	966	963	957	966	969	956	930	919
Stockport: Killed	8	9	9	11	10	11	11	12	8	7	6	6	7
Stockport: Serious	69	67	69	65	66	62	58	60	56	58	59	58	64
Stockport: Slight	728	705	689	714	705	676	674	663	664	640	626	634	645
Stockport: Total	805	781	767	790	781	749	743	735	728	705	691	698	716
Tameside: Killed	2	2	2	3	5	5	4	4	3	4	4	4	4
Tameside: Serious	52	51	49	49	54	58	56	54	49	49	48	48	45
Tameside: Slight	605	608	613	617	609	616	597	615	621	622	601	617	614
Tameside: Total	659	661	664	669	668	679	657	673	673	675	653	669	663
Trafford: Killed	5	5	5	5	4	4	4	3	3	3	5	5	6
Trafford: Serious	49	48	46	48	44	48	49	47	49	50	48	49	46
Trafford: Slight	677	674	675	674	668	664	660	640	629	601	588	576	569
Trafford: Total	731	727	726	727	716	716	713	690	681	654	641	630	621
Wigan: Killed	6	7	8	9	8	9	9	10	11	10	9	10	10
Wigan: Serious	89	88	93	94	104	99	92	90	88	84	88	91	87
Wigan: Slight	845	843	818	866	865	866	877	884	864	829	834	817	793
Wigan: Total	940	938	919	969	977	974	978	984	963	923	931	918	890
Total	9881	9805	9681	9777	9732	9802	9762	9725	9652	9573	9442	9399	9303

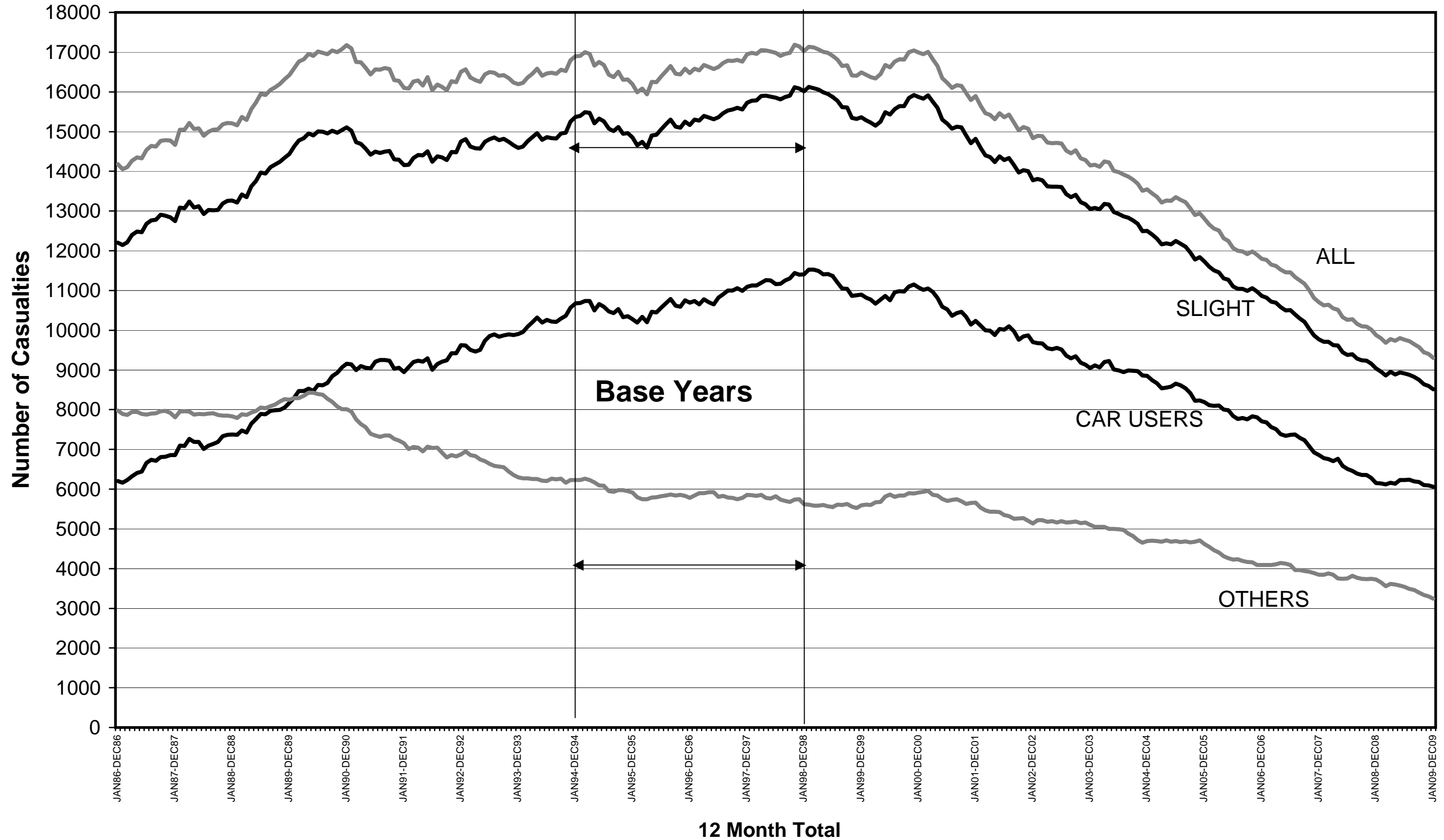
Greater Manchester Killed & Seriously Injured Casualties

Running Annual Totals - Jan86 to Dec09



Greater Manchester Casualties by Casualty Class

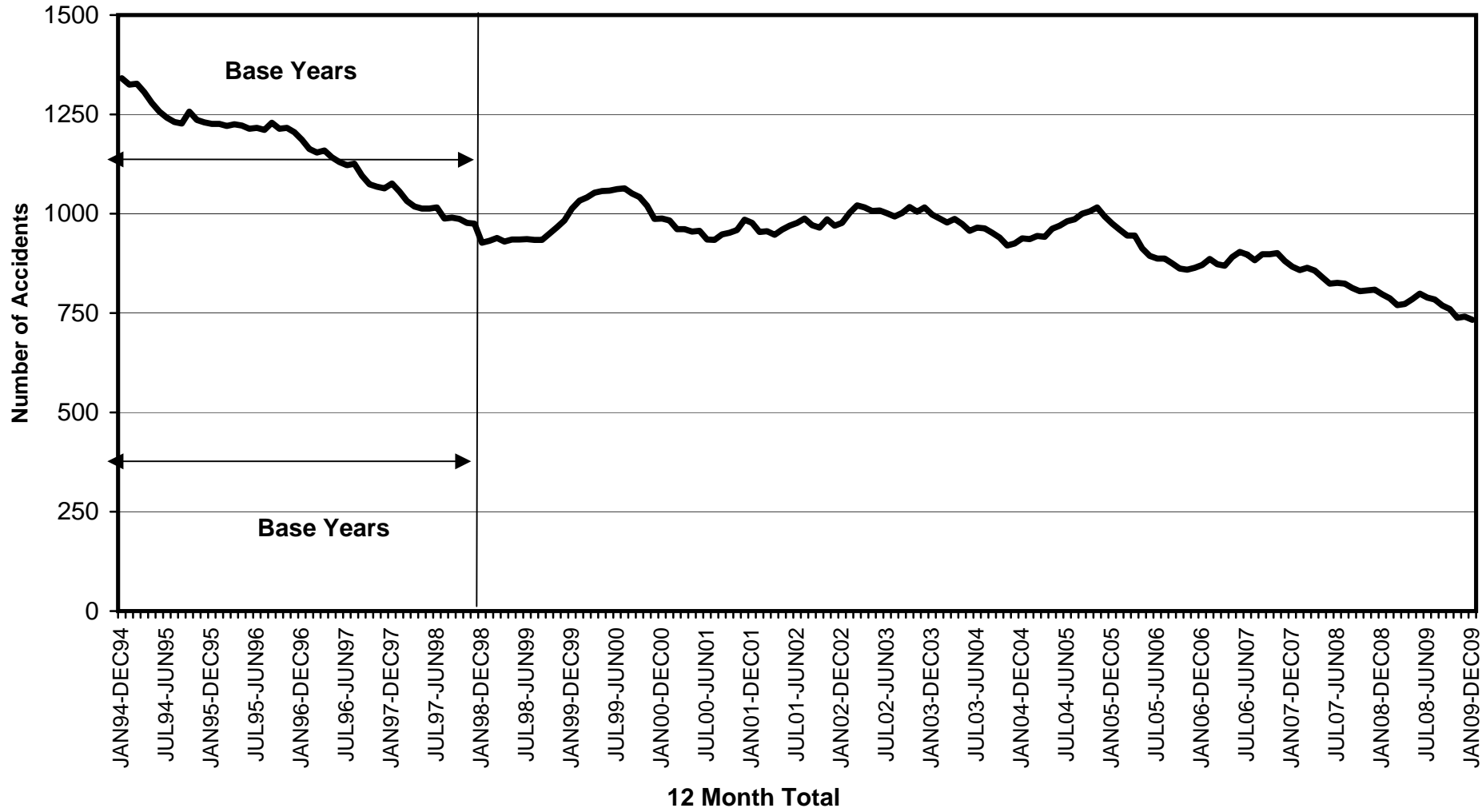
Running Annual Totals - Jan86 to Dec09



RUNNING ANNUAL TOTALS – ROAD ACCIDENTS

Greater Manchester Running Annual Accident Totals 2008 to 2009													
12 Month Total	Jan 08 - Dec 08	Feb 08 - Jan 09	Mar 08 - Feb 09	Apr 08 - Mar 09	May 08 - Apr 09	Jun 08 - May 09	Jul 08 - Jun 09	Aug 08 - Jul 09	Sep 08 - Aug 09	Oct 08 - Sep 09	Nov 08 - Oct 09	Dec 08 - Nov 09	Jan 09 - Dec 09
Accident Severity													
Killed	57	59	60	66	64	64	66	67	64	67	69	68	69
Serious	740	728	710	707	721	735	723	717	705	693	669	673	664
Slight	6349	6270	6163	6184	6112	6090	6070	6069	6028	5933	5856	5843	5777
Total	7146	7057	6933	6957	6897	6889	6859	6853	6797	6693	6594	6584	6510
District: Accidents													
Bolton: Killed	9	11	11	11	10	10	10	9	10	10	11	10	9
Bolton: Serious	69	68	61	61	63	67	68	65	58	56	54	55	58
Bolton: Slight	698	690	668	650	644	611	605	619	613	600	595	589	585
Bolton: Total	776	769	740	722	717	688	683	693	681	666	660	654	652
Bury: Killed	4	4	4	4	4	3	4	4	3	3	3	3	3
Bury: Serious	41	42	46	47	46	49	46	50	51	56	58	58	61
Bury: Slight	444	431	416	415	401	413	423	429	411	404	397	402	400
Bury: Total	489	477	466	466	451	465	473	483	465	463	458	463	464
Manchester: Killed	11	9	9	9	10	10	11	11	12	13	14	13	13
Manchester: Serious	172	172	165	161	162	170	175	173	182	176	165	171	162
Manchester: Slight	1573	1576	1553	1571	1545	1549	1555	1545	1556	1559	1537	1551	1532
Manchester: Total	1756	1757	1727	1741	1717	1729	1741	1729	1750	1748	1716	1735	1707
Oldham: Killed	4	4	4	4	4	5	6	7	7	10	10	9	10
Oldham: Serious	58	57	57	59	61	61	56	53	55	51	49	50	51
Oldham: Slight	515	509	494	490	475	470	451	442	434	423	420	419	410
Oldham: Total	577	570	555	553	540	536	513	502	496	484	479	478	471
Rochdale: Killed	7	7	7	8	7	4	4	4	3	3	3	3	2
Rochdale: Serious	70	67	64	65	71	71	72	70	65	65	56	52	51
Rochdale: Slight	494	484	481	487	481	487	476	463	447	443	431	434	428
Rochdale: Total	571	558	552	560	559	562	552	537	515	511	490	489	481
Salford: Killed	2	2	2	3	3	4	4	4	4	4	5	6	6
Salford: Serious	86	86	77	76	73	74	75	78	72	66	60	58	57
Salford: Slight	579	573	581	580	582	589	587	576	580	587	593	579	565
Salford: Total	667	661	660	659	658	667	666	658	656	657	658	643	628
Stockport: Killed	7	8	8	10	9	10	10	11	8	7	6	6	7
Stockport: Serious	65	63	64	60	61	57	53	55	52	56	57	55	61
Stockport: Slight	543	523	510	519	515	501	506	502	504	484	472	473	479
Stockport: Total	615	594	582	589	585	568	569	568	564	547	535	534	547
Tameside: Killed	2	2	2	3	5	5	4	4	3	4	4	4	4
Tameside: Serious	49	48	46	46	51	53	51	49	46	46	45	46	42
Tameside: Slight	439	431	432	426	417	416	401	425	428	422	404	408	408
Tameside: Total	490	481	480	475	473	474	456	478	477	472	453	458	454
Trafford: Killed	5	5	5	5	4	4	4	3	3	3	4	4	5
Trafford: Serious	45	43	43	45	41	45	46	45	47	48	47	48	45
Trafford: Slight	461	457	458	461	462	463	468	460	459	443	439	433	432
Trafford: Total	511	505	506	511	507	512	518	508	509	494	490	485	482
Wigan: Killed	6	7	8	9	8	9	9	10	11	10	9	10	10
Wigan: Serious	85	82	87	87	92	88	81	79	77	73	78	80	76
Wigan: Slight	603	596	570	585	590	591	598	608	596	568	568	555	538
Wigan: Total	694	685	665	681	690	688	688	697	684	651	655	645	624
Total	7146	7057	6933	6957	6897	6889	6859	6853	6797	6693	6594	6584	6510

Greater Manchester Killed & Seriously Injured Accidents Running Annual Totals - Jan94 to Dec09



Greater Manchester Slight Accidents Running Annual Totals - Jan94 to Dec09

