

# VISION 2020 FACTSHEET



DATA SOLUTIONS DEPARTMENT

## GREATER MANCHESTER KSI CASUALTY STATISTICS

Latest 12 Months Data July 2016 to June 2017

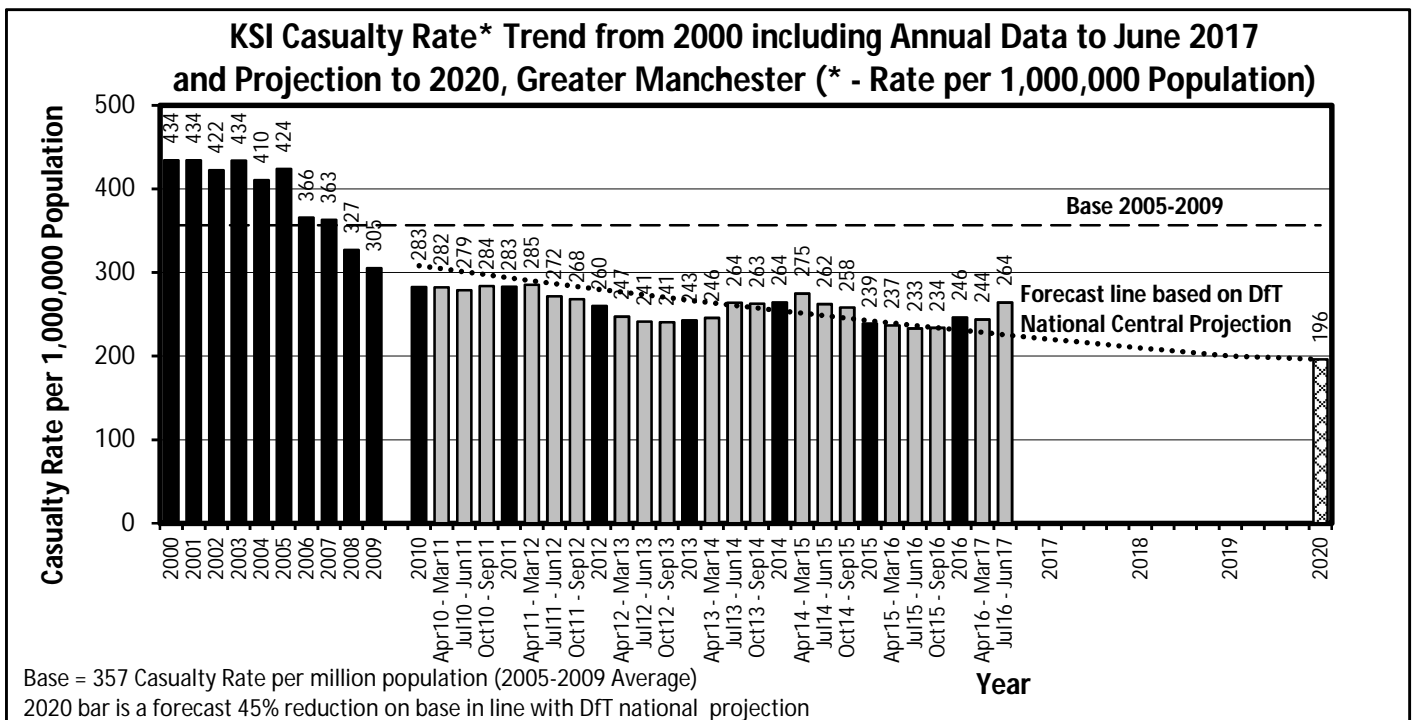
### KSI Casualty Rates: Casualty Rate Trend 2000 - June 2017 and Projection to 2020

The table shows Greater Manchester KSI casualty rates\* from 2000 - June 2017 and forecast casualty reductions based on the DfT National Central Projection as outlined in the Strategic Framework for Road Safety. (\*based on ONS population projections).

KSI Casualty Rate Trend 2000 - June 2017 and Projection to 2020				
Year	KSI Casualty Rates**		Index	
	Actual	Projection	Actual	Projection
2000	434			
2001	434			
2002	422			
2003	434			
2004	410			
2005	424			
2006	366			
2007	363			
2008	327			
2009	305			
2005-2009 Baseline	357		100	
2010	283	308	79	86
2011	283	294	79	82
2012	260	280	73	78
2013	243	267	68	75
2014	264	254	74	71
2015	239	242	67	68
2016	246	231	69	65
Apr 2016-Mar 2017	244	228	68	64
Jul 2016-Jun 2017	264	226	74	63
2017		220		62
2018		210		59
2019		200		56
2020		196		55

Notes: \*\* - KSI rates per 1,000,000 population

Index is based on 2005-2009 average



Greater Manchester Casualty Statistics, June 2017

<b>Progress Towards KSI Casualty Rate* Reduction Forecast by District</b>			
<b>KSI Casualty Rates* (Progress Towards KPI 11)</b>			
<b>District</b>	<b>Base</b>	<b>Jul 16 to Jun 17**</b>	<b>Vision 2020</b>
Bolton	357	291	196
Bury	349	224	192
Manchester	480	304	264
Oldham	355	238	195
Rochdale	343	350	189
Salford	392	297	216
Stockport	275	222	151
Tameside	296	253	163
Trafford	269	163	148
Wigan	338	255	186
<b>Greater Manchester</b>	<b>357</b>	<b>264</b>	<b>196</b>

<b>Index of Progress Towards KSI Casualty Rate* Reduction Forecast by District</b>			
<b>KSI Casualty Rates* (Progress Towards KPI 11)</b>			
<b>District</b>	<b>Base</b>	<b>Jul 16 to Jun 17**</b>	<b>Vision 2020</b>
Bolton	100	82	55
Bury	100	64	55
Manchester	100	63	55
Oldham	100	67	55
Rochdale	100	102	55
Salford	100	76	55
Stockport	100	81	55
Tameside	100	85	55
Trafford	100	61	55
Wigan	100	75	55
<b>Greater Manchester</b>	<b>100</b>	<b>74</b>	<b>55</b>

Notes: Base = Average 2005-2009 = 100

\* - KSI rates per 1,000,000 resident population

\*\* - Uses figures provided by ONS for the mid-year estimate of population for 2015