

VISION 2020 FACTSHEET



DATA SOLUTIONS DEPARTMENT

GREATER MANCHESTER KSI CASUALTY STATISTICS

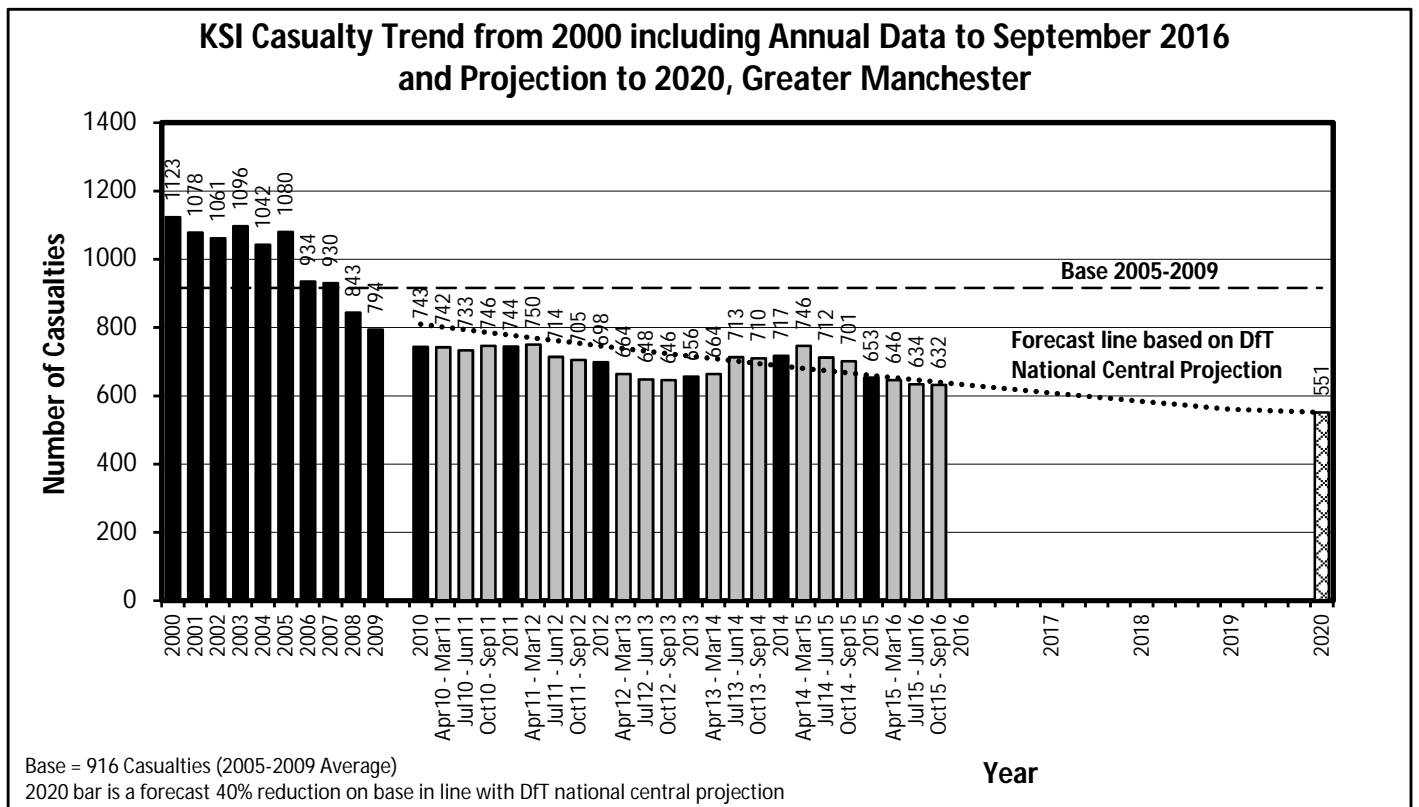
Latest 12 Months Data October 2015 to September 2016

KSI Casualties: Casualty Trend 2000 - September 2016 and Projection to 2020

The table shows Greater Manchester KSI casualties from 2000 - September 2016 and forecast casualty reductions based on the DFT National Central Projection as outlined in the Strategic Framework for Road Safety

KSI Casualty Trend 2000 - September 2016 and Projection to 2020				
Year	KSI Casualty Totals		Index	
	Actual	Projection	Actual	Projection
2000	1123			
2001	1078			
2002	1061			
2003	1096			
2004	1042			
2005	1080			
2006	934			
2007	930			
2008	843			
2009	794			
2005-2009 Baseline	916		100	
2010	743	810	81	88
2011	744	777	81	85
2012	698	746	76	81
2013	656	716	72	78
2014	717	687	78	75
2015	653	660	71	72
Apr 2015-Mar 2016	646	653	71	71
Jul 2015-Jun 2016	634	647	69	71
Oct 2015-Sep 2016	632	640	69	70
2016		634		69
2017		608		66
2018		584		64
2019		560		61
2020		551		60

Note: Index is based on 2005-2009 average



Greater Manchester Casualty Statistics, September 2016

Progress Towards KSI Casualty Reduction Forecast by District			
District	KSI		
	Base	Oct 15 to Sep 16	Vision 2020
Bolton	94	86	57
Bury	64	35	38
Manchester	222	146	133
Oldham	78	63	47
Rochdale	71	57	42
Salford	86	54	52
Stockport	77	56	47
Tameside	64	42	38
Trafford	57	40	35
Wigan	103	53	62
Greater Manchester	916	632	551

Index of Progress Towards KSI Casualty Reduction Forecast by District			
District	KSI		
	Base	Oct 15 to Sep 16	Vision 2020
Bolton	100	91	60
Bury	100	55	60
Manchester	100	66	60
Oldham	100	81	60
Rochdale	100	81	60
Salford	100	63	60
Stockport	100	72	60
Tameside	100	66	60
Trafford	100	70	60
Wigan	100	51	60
Greater Manchester	100	69	60

Note: Base = Average 2005-2009 = 100