

VISION 2020 FACTSHEET



DATA SOLUTIONS DEPARTMENT

BOLTON KSI CASUALTY STATISTICS

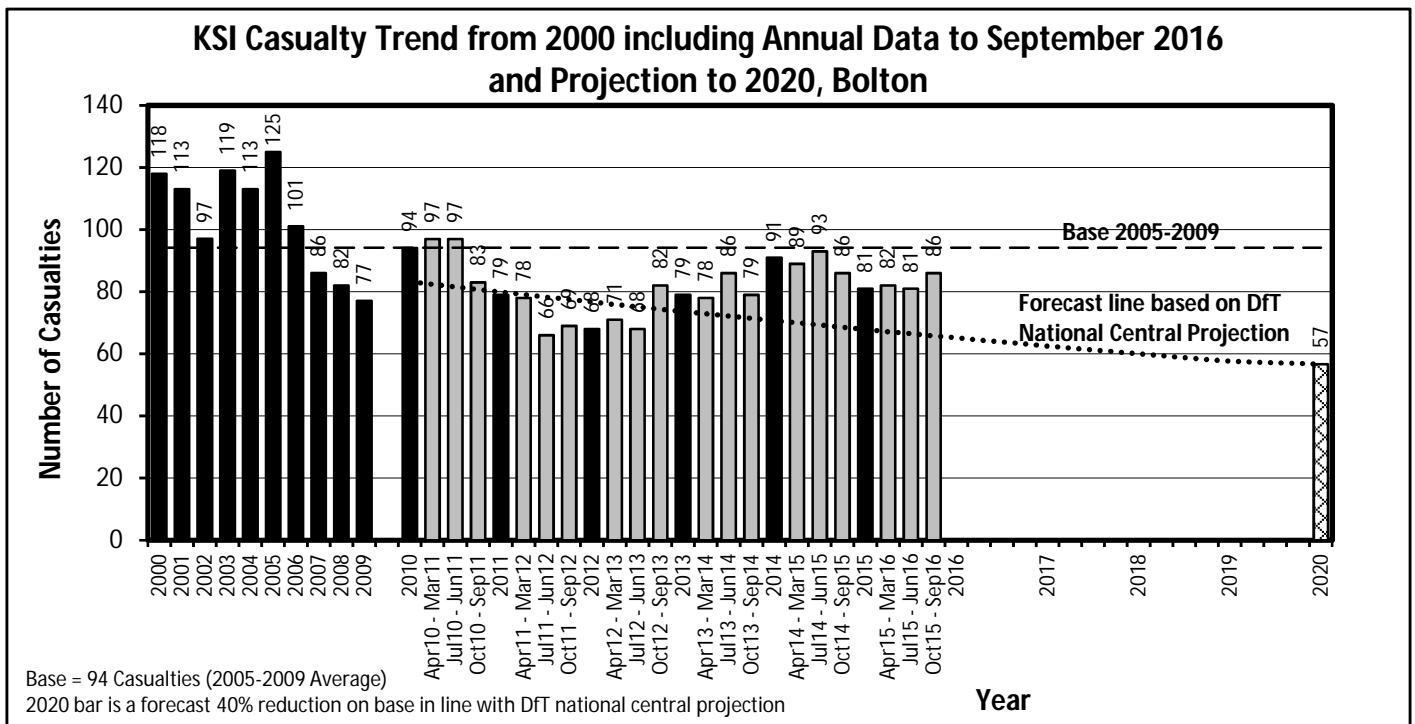
Latest 12 Months Data October 2015 to September 2016

KSI Casualties: Casualty Trend 2000 - September 2016 and Projection to 2020

The table shows Bolton KSI casualties from 2000 - September 2016 and forecast casualty reductions based on the DfT National Central Projection as outlined in the Strategic Framework for Road Safety

| KSI Casualty Trend 2000 - September 2016 and Projection to 2020 | | | | |
|---|---------------------|------------|--------|------------|
| Year | KSI Casualty Totals | | Index | |
| | Actual | Projection | Actual | Projection |
| 2000 | 118 | | | |
| 2001 | 113 | | | |
| 2002 | 97 | | | |
| 2003 | 119 | | | |
| 2004 | 113 | | | |
| 2005 | 125 | | | |
| 2006 | 101 | | | |
| 2007 | 86 | | | |
| 2008 | 82 | | | |
| 2009 | 77 | | | |
| 2005-2009 Baseline | 94 | | 100 | |
| 2010 | 94 | 83 | 100 | 88 |
| 2011 | 79 | 80 | 84 | 85 |
| 2012 | 68 | 77 | 72 | 81 |
| 2013 | 79 | 74 | 84 | 78 |
| 2014 | 91 | 71 | 97 | 75 |
| 2015 | 81 | 68 | 86 | 72 |
| Apr 2015-Mar 2016 | 82 | 67 | 87 | 71 |
| Jul 2015-Jun 2016 | 81 | 66 | 86 | 71 |
| Oct 2015-Sep 2016 | 86 | 66 | 91 | 70 |
| 2016 | | 65 | | 69 |
| 2017 | | 63 | | 66 |
| 2018 | | 60 | | 64 |
| 2019 | | 58 | | 61 |
| 2020 | | 57 | | 60 |

Note: Index is based on 2005-2009 average



VISION 2020 FACTSHEET



DATA SOLUTIONS DEPARTMENT

BURY KSI CASUALTY STATISTICS

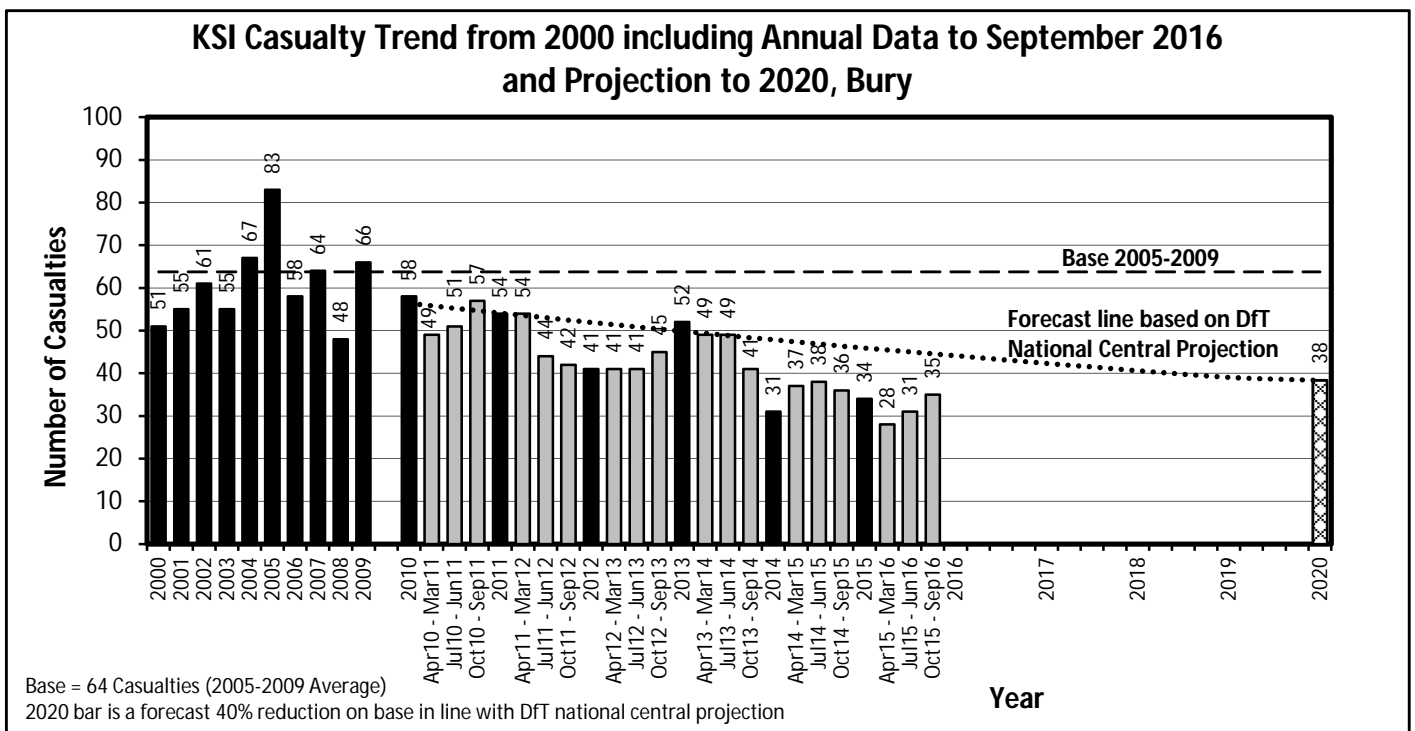
Latest 12 Months Data October 2015 to September 2016

KSI Casualties: Casualty Trend 2000 - September 2016 and Projection to 2020

The table shows Bury KSI casualties from 2000 - September 2016 and forecast casualty reductions based on the DfT National Central Projection as outlined in the Strategic Framework for Road Safety

| KSI Casualty Trend 2000 - September 2016 and Projection to 2020 | | | | |
|---|---------------------|------------|--------|------------|
| Year | KSI Casualty Totals | | Index | |
| | Actual | Projection | Actual | Projection |
| 2000 | 51 | | | |
| 2001 | 55 | | | |
| 2002 | 61 | | | |
| 2003 | 55 | | | |
| 2004 | 67 | | | |
| 2005 | 83 | | | |
| 2006 | 58 | | | |
| 2007 | 64 | | | |
| 2008 | 48 | | | |
| 2009 | 66 | | | |
| 2005-2009 Baseline | 64 | | 100 | |
| 2010 | 58 | 56 | 91 | 88 |
| 2011 | 54 | 54 | 85 | 85 |
| 2012 | 41 | 52 | 64 | 81 |
| 2013 | 52 | 50 | 82 | 78 |
| 2014 | 31 | 48 | 49 | 75 |
| 2015 | 34 | 46 | 53 | 72 |
| Apr 2015-Mar 2016 | 28 | 45 | 44 | 71 |
| Jul 2015-Jun 2016 | 31 | 45 | 49 | 71 |
| Oct 2015-Sep 2016 | 35 | 45 | 55 | 70 |
| 2016 | | 44 | | 69 |
| 2017 | | 42 | | 66 |
| 2018 | | 41 | | 64 |
| 2019 | | 39 | | 61 |
| 2020 | | 38 | | 60 |

Note: Index is based on 2005-2009 average



VISION 2020 FACTSHEET



DATA SOLUTIONS DEPARTMENT

MANCHESTER KSI CASUALTY STATISTICS

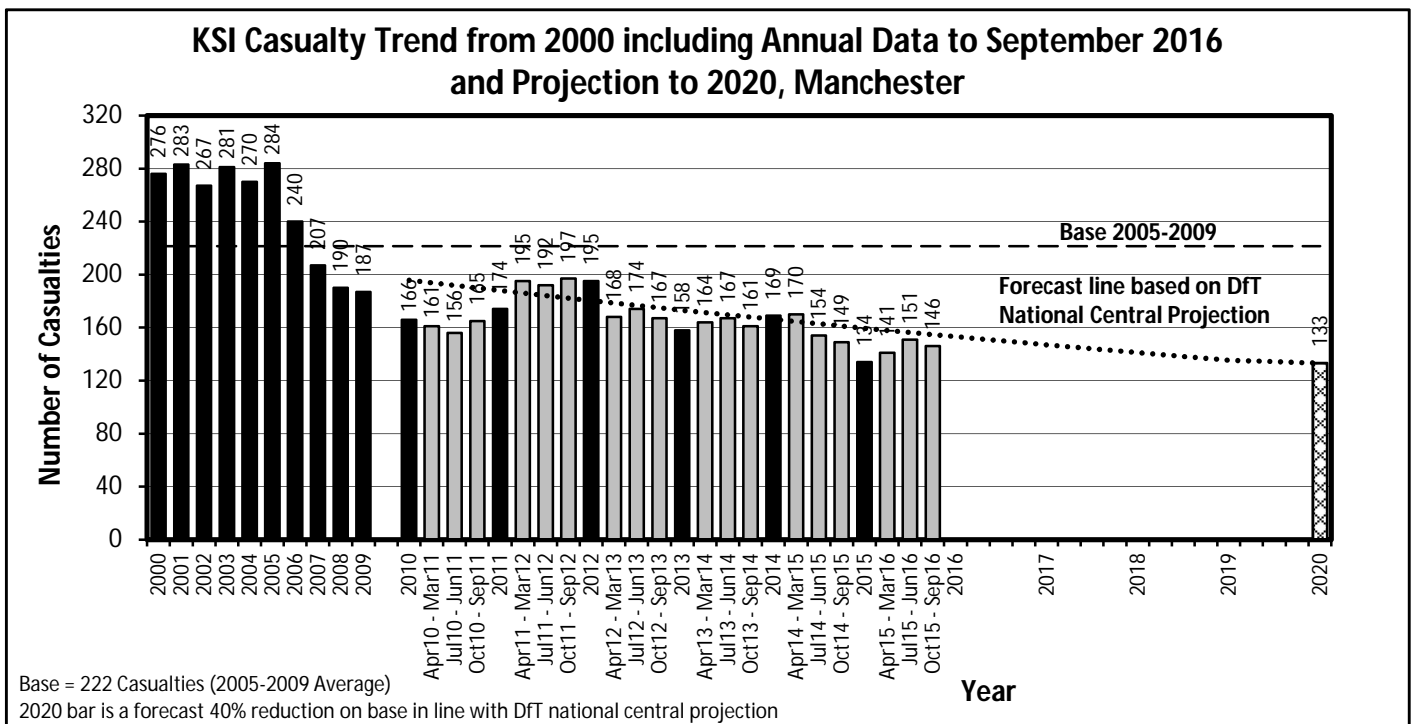
Latest 12 Months Data October 2015 to September 2016

KSI Casualties: Casualty Trend 2000 - September 2016 and Projection to 2020

The table shows Manchester KSI casualties from 2000 - September 2016 and forecast casualty reductions based on the DfT National Central Projection as outlined in the Strategic Framework for Road Safety

| KSI Casualty Trend 2000 - September 2016 and Projection to 2020 | | | | |
|---|---------------------|------------|--------|------------|
| Year | KSI Casualty Totals | | Index | |
| | Actual | Projection | Actual | Projection |
| 2000 | 276 | | | |
| 2001 | 283 | | | |
| 2002 | 267 | | | |
| 2003 | 281 | | | |
| 2004 | 270 | | | |
| 2005 | 284 | | | |
| 2006 | 240 | | | |
| 2007 | 207 | | | |
| 2008 | 190 | | | |
| 2009 | 187 | | | |
| 2005-2009 Baseline | 222 | | 100 | |
| 2010 | 166 | 196 | 75 | 88 |
| 2011 | 174 | 188 | 79 | 85 |
| 2012 | 195 | 180 | 88 | 81 |
| 2013 | 158 | 173 | 71 | 78 |
| 2014 | 169 | 166 | 76 | 75 |
| 2015 | 134 | 160 | 60 | 72 |
| Apr 2015-Mar 2016 | 141 | 158 | 64 | 71 |
| Jul 2015-Jun 2016 | 151 | 156 | 68 | 71 |
| Oct 2015-Sep 2016 | 146 | 155 | 66 | 70 |
| 2016 | | 153 | | 69 |
| 2017 | | 147 | | 66 |
| 2018 | | 141 | | 64 |
| 2019 | | 136 | | 61 |
| 2020 | | 133 | | 60 |

Note: Index is based on 2005-2009 average



VISION 2020 FACTSHEET



DATA SOLUTIONS DEPARTMENT

OLDHAM KSI CASUALTY STATISTICS

Latest 12 Months Data October 2015 to September 2016

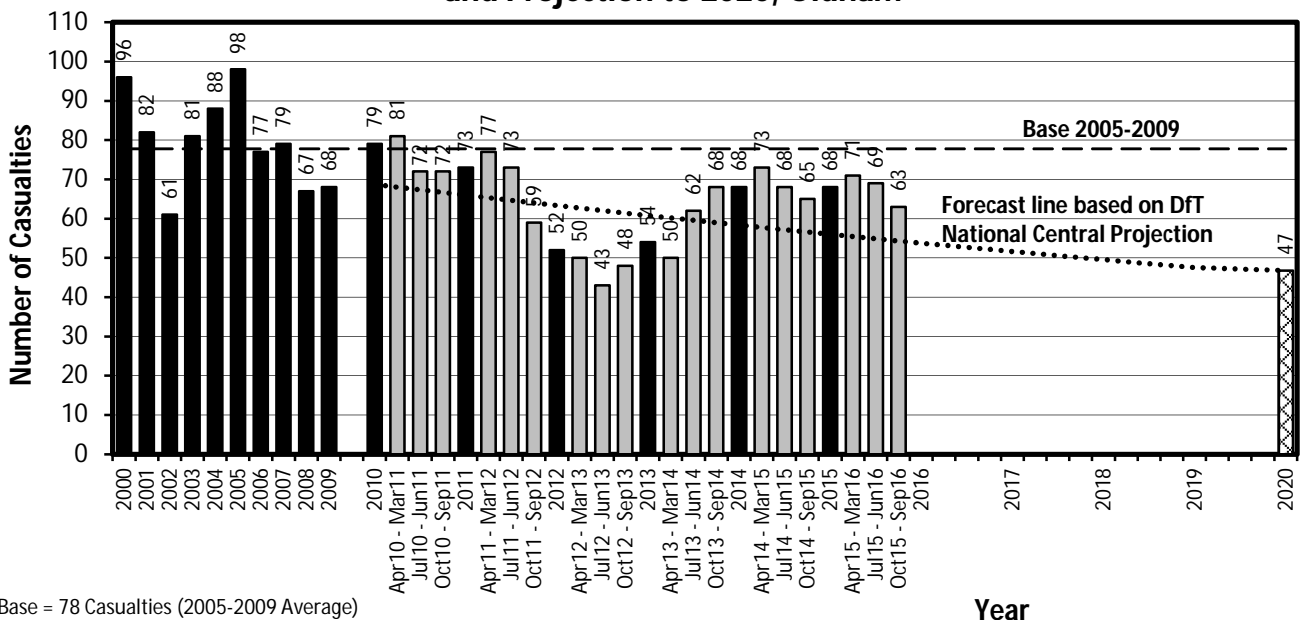
KSI Casualties: Casualty Trend 2000 - September 2016 and Projection to 2020

The table shows Oldham KSI casualties from 2000 - September 2016 and forecast casualty reductions based on the DfT National Central Projection as outlined in the Strategic Framework for Road Safety

| KSI Casualty Trend 2000 - September 2016 and Projection to 2020 | | | | |
|---|---------------------|------------|--------|------------|
| Year | KSI Casualty Totals | | Index | |
| | Actual | Projection | Actual | Projection |
| 2000 | 96 | | | |
| 2001 | 82 | | | |
| 2002 | 61 | | | |
| 2003 | 81 | | | |
| 2004 | 88 | | | |
| 2005 | 98 | | | |
| 2006 | 77 | | | |
| 2007 | 79 | | | |
| 2008 | 67 | | | |
| 2009 | 68 | | | |
| 2005-2009 Baseline | 78 | | 100 | |
| 2010 | 79 | 69 | 102 | 88 |
| 2011 | 73 | 66 | 94 | 85 |
| 2012 | 52 | 63 | 67 | 81 |
| 2013 | 54 | 61 | 69 | 78 |
| 2014 | 68 | 58 | 87 | 75 |
| 2015 | 68 | 56 | 87 | 72 |
| Apr 2015-Mar 2016 | 71 | 55 | 91 | 71 |
| Jul 2015-Jun 2016 | 69 | 55 | 89 | 71 |
| Oct 2015-Sep 2016 | 63 | 54 | 81 | 70 |
| 2016 | | 54 | | 69 |
| 2017 | | 52 | | 66 |
| 2018 | | 50 | | 64 |
| 2019 | | 48 | | 61 |
| 2020 | | 47 | | 60 |

Note: Index is based on 2005-2009 average

KSI Casualty Trend from 2000 including Annual Data to September 2016 and Projection to 2020, Oldham



Base = 78 Casualties (2005-2009 Average)

2020 bar is a forecast 40% reduction on base in line with DfT national central projection

VISION 2020 FACTSHEET



DATA SOLUTIONS DEPARTMENT

ROCHDALE KSI CASUALTY STATISTICS

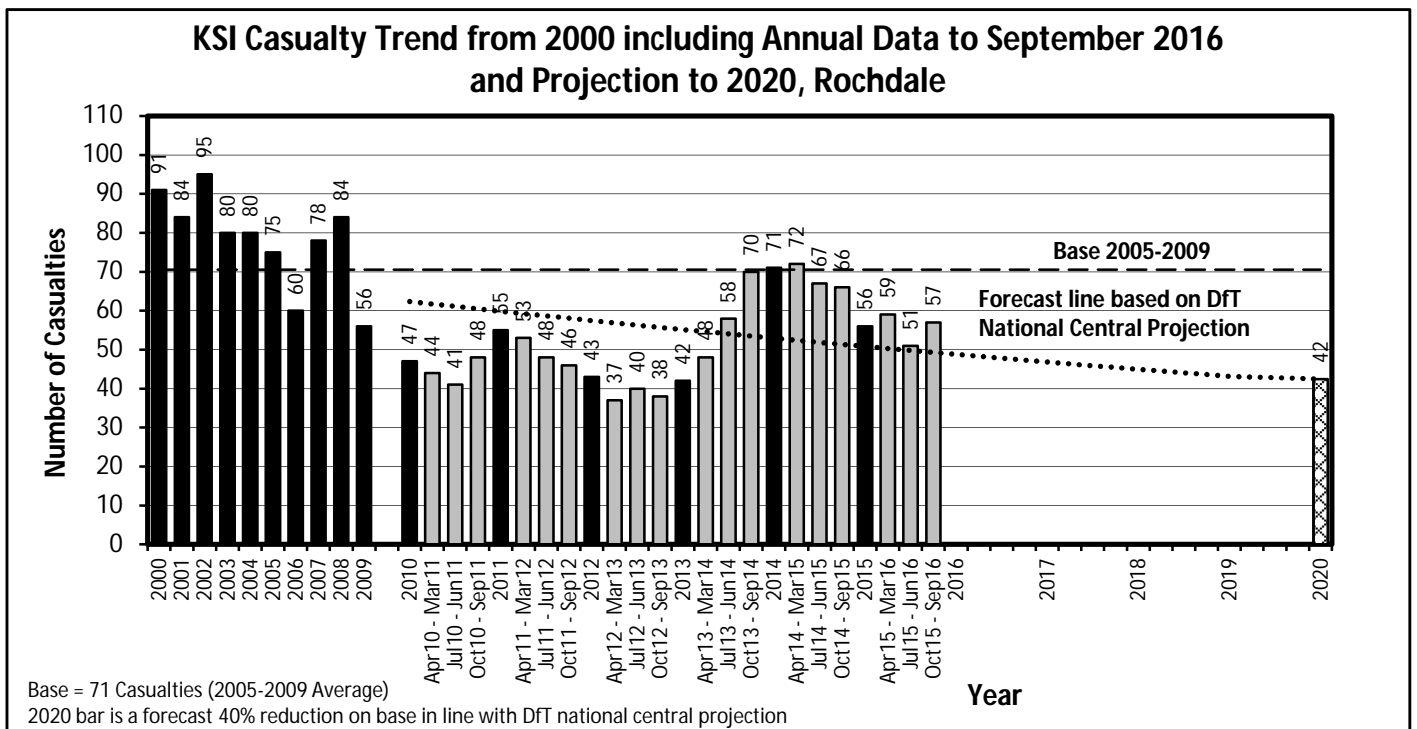
Latest 12 Months Data October 2015 to September 2016

KSI Casualties: Casualty Trend 2000 - September 2016 and Projection to 2020

The table shows Rochdale KSI casualties from 2000 - September 2016 and forecast casualty reductions based on the DfT National Central Projection as outlined in the Strategic Framework for Road Safety

| KSI Casualty Trend 2000 - September 2016 and Projection to 2020 | | | | |
|---|---------------------|------------|--------|------------|
| Year | KSI Casualty Totals | | Index | |
| | Actual | Projection | Actual | Projection |
| 2000 | 91 | | | |
| 2001 | 84 | | | |
| 2002 | 95 | | | |
| 2003 | 80 | | | |
| 2004 | 80 | | | |
| 2005 | 75 | | | |
| 2006 | 60 | | | |
| 2007 | 78 | | | |
| 2008 | 84 | | | |
| 2009 | 56 | | | |
| 2005-2009 Baseline | 71 | | 100 | |
| 2010 | 47 | 62 | 67 | 88 |
| 2011 | 55 | 60 | 78 | 85 |
| 2012 | 43 | 57 | 61 | 81 |
| 2013 | 42 | 55 | 59 | 78 |
| 2014 | 71 | 53 | 101 | 75 |
| 2015 | 56 | 51 | 79 | 72 |
| Apr 2015-Mar 2016 | 59 | 50 | 84 | 71 |
| Jul 2015-Jun 2016 | 51 | 50 | 72 | 71 |
| Oct 2015-Sep 2016 | 57 | 49 | 81 | 70 |
| 2016 | | 49 | | 69 |
| 2017 | | 47 | | 66 |
| 2018 | | 45 | | 64 |
| 2019 | | 43 | | 61 |
| 2020 | | 42 | | 60 |

Note: Index is based on 2005-2009 average



VISION 2020 FACTSHEET



DATA SOLUTIONS DEPARTMENT

SALFORD KSI CASUALTY STATISTICS

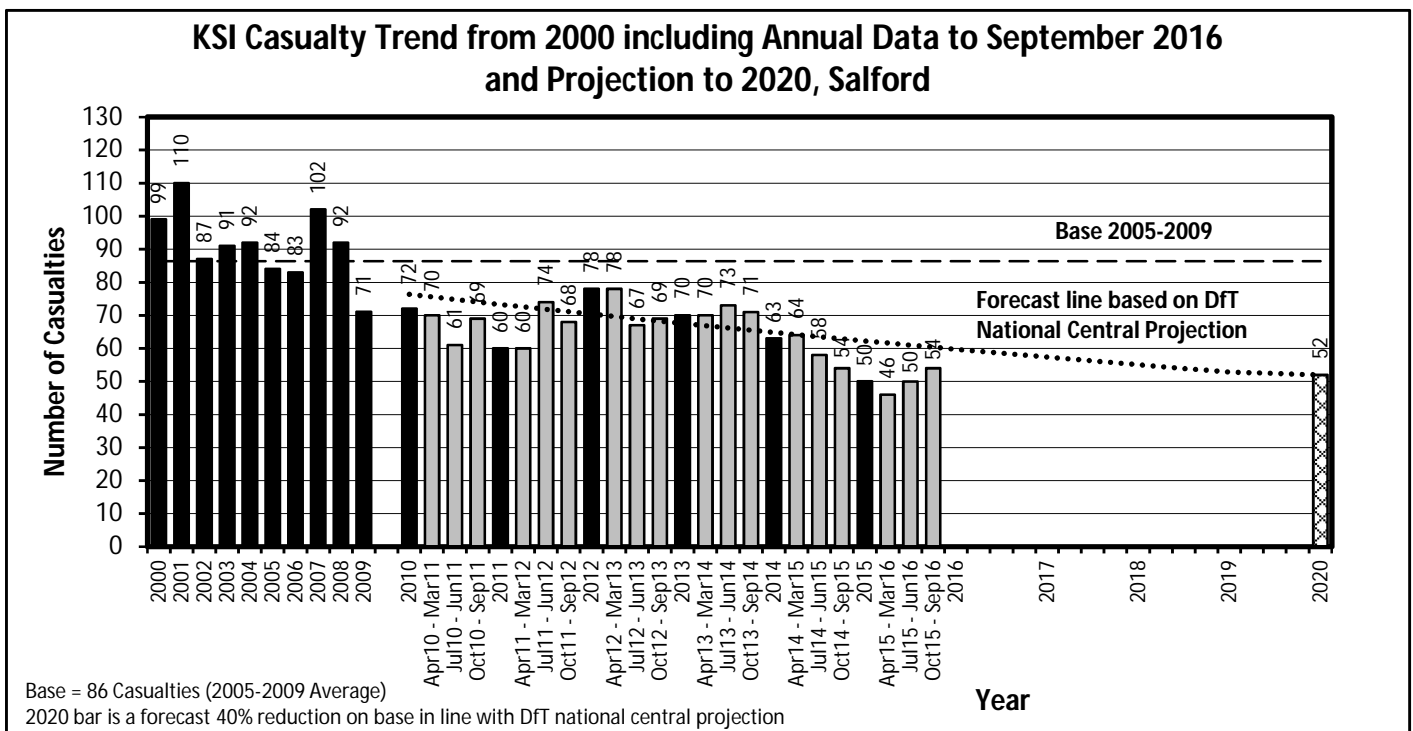
Latest 12 Months Data October 2015 to September 2016

KSI Casualties: Casualty Trend 2000 - September 2016 and Projection to 2020

The table shows Salford KSI casualties from 2000 - September 2016 and forecast casualty reductions based on the DfT National Central Projection as outlined in the Strategic Framework for Road Safety

| KSI Casualty Trend 2000 - September 2016 and Projection to 2020 | | | | |
|---|---------------------|------------|--------|------------|
| Year | KSI Casualty Totals | | Index | |
| | Actual | Projection | Actual | Projection |
| 2000 | 99 | | | |
| 2001 | 110 | | | |
| 2002 | 87 | | | |
| 2003 | 91 | | | |
| 2004 | 92 | | | |
| 2005 | 84 | | | |
| 2006 | 83 | | | |
| 2007 | 102 | | | |
| 2008 | 92 | | | |
| 2009 | 71 | | | |
| 2005-2009 Baseline | 86 | | 100 | |
| 2010 | 72 | 76 | 83 | 88 |
| 2011 | 60 | 73 | 69 | 85 |
| 2012 | 78 | 70 | 90 | 81 |
| 2013 | 70 | 68 | 81 | 78 |
| 2014 | 63 | 65 | 73 | 75 |
| 2015 | 50 | 62 | 58 | 72 |
| Apr 2015-Mar 2016 | 46 | 62 | 53 | 71 |
| Jul 2015-Jun 2016 | 50 | 61 | 58 | 71 |
| Oct 2015-Sep 2016 | 54 | 60 | 63 | 70 |
| 2016 | | 60 | | 69 |
| 2017 | | 57 | | 66 |
| 2018 | | 55 | | 64 |
| 2019 | | 53 | | 61 |
| 2020 | | 52 | | 60 |

Note: Index is based on 2005-2009 average



VISION 2020 FACTSHEET



DATA SOLUTIONS DEPARTMENT

STOCKPORT KSI CASUALTY STATISTICS

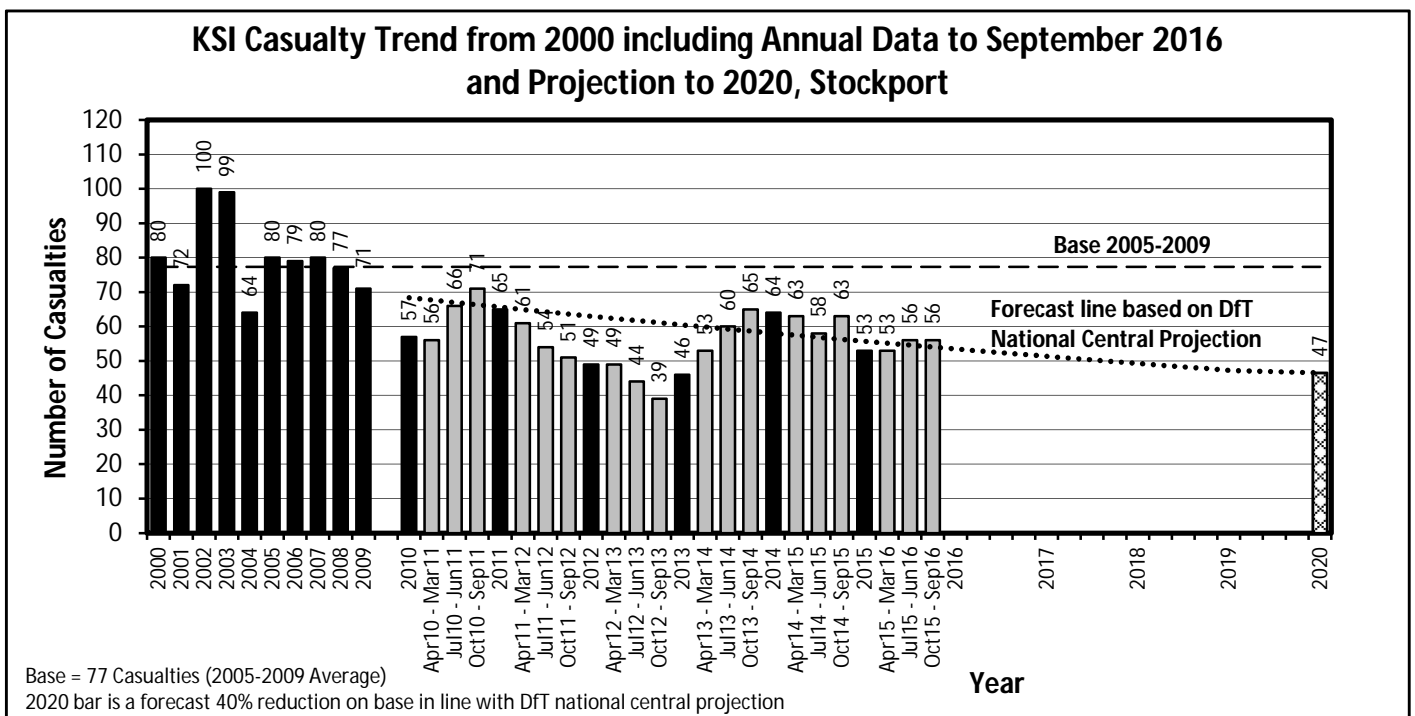
Latest 12 Months Data October 2015 to September 2016

KSI Casualties: Casualty Trend 2000 - September 2016 and Projection to 2020

The table shows Stockport KSI casualties from 2000 - September 2016 and forecast casualty reductions based on the DFT National Central Projection as outlined in the Strategic Framework for Road Safety

| KSI Casualty Trend 2000 - September 2016 and Projection to 2020 | | | | |
|---|---------------------|------------|--------|------------|
| Year | KSI Casualty Totals | | Index | |
| | Actual | Projection | Actual | Projection |
| 2000 | 80 | | | |
| 2001 | 72 | | | |
| 2002 | 100 | | | |
| 2003 | 99 | | | |
| 2004 | 64 | | | |
| 2005 | 80 | | | |
| 2006 | 79 | | | |
| 2007 | 80 | | | |
| 2008 | 77 | | | |
| 2009 | 71 | | | |
| 2005-2009 Baseline | 77 | | 100 | |
| 2010 | 57 | 68 | 74 | 88 |
| 2011 | 65 | 66 | 84 | 85 |
| 2012 | 49 | 63 | 63 | 81 |
| 2013 | 46 | 61 | 59 | 78 |
| 2014 | 64 | 58 | 83 | 75 |
| 2015 | 53 | 56 | 68 | 72 |
| Apr 2015-Mar 2016 | 53 | 55 | 68 | 71 |
| Jul 2015-Jun 2016 | 56 | 55 | 72 | 71 |
| Oct 2015-Sep 2016 | 56 | 54 | 72 | 70 |
| 2016 | | 54 | | 69 |
| 2017 | | 51 | | 66 |
| 2018 | | 49 | | 64 |
| 2019 | | 47 | | 61 |
| 2020 | | 47 | | 60 |

Note: Index is based on 2005-2009 average



VISION 2020 FACTSHEET



DATA SOLUTIONS DEPARTMENT

TAMESIDE KSI CASUALTY STATISTICS

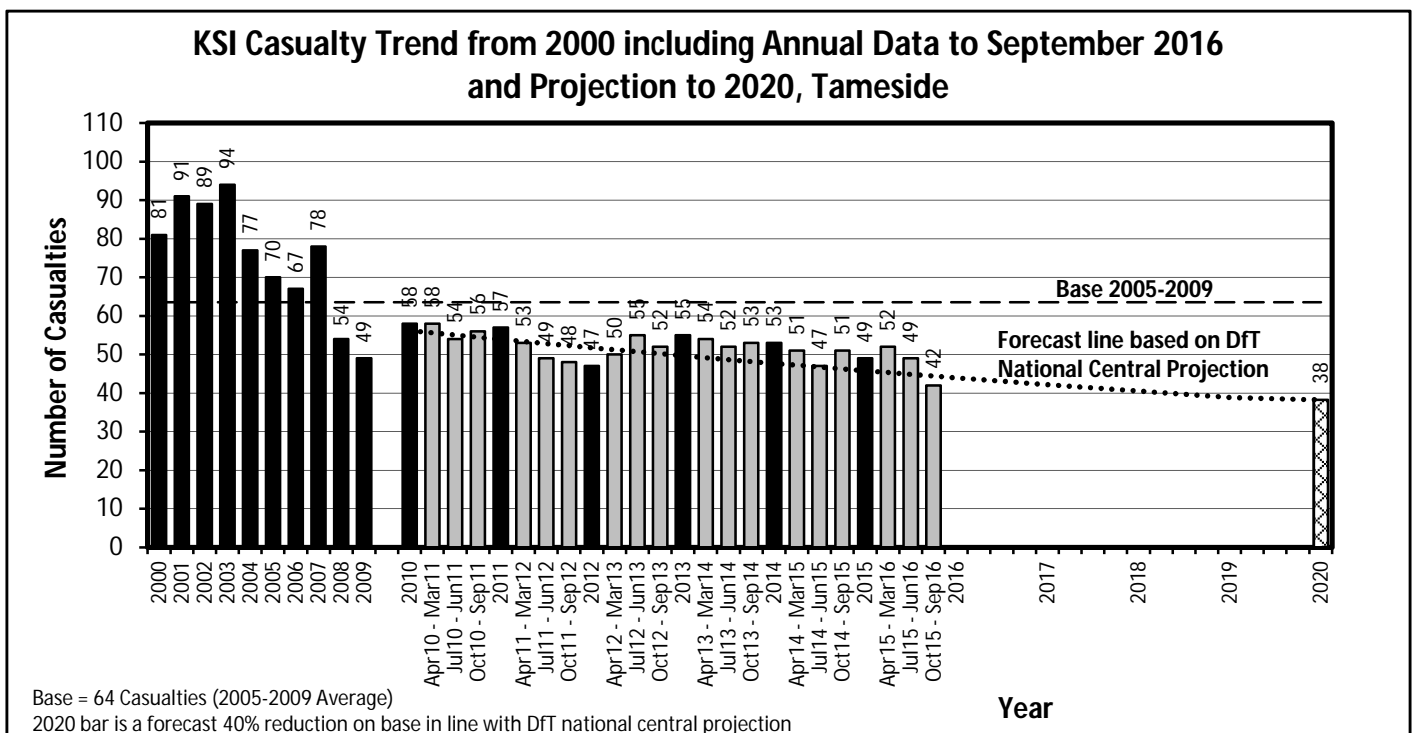
Latest 12 Months Data October 2015 to September 2016

KSI Casualties: Casualty Trend 2000 - September 2016 and Projection to 2020

The table shows Tameside KSI casualties from 2000 - September 2016 and forecast casualty reductions based on the DfT National Central Projection as outlined in the Strategic Framework for Road Safety

| KSI Casualty Trend 2000 - September 2016 and Projection to 2020 | | | | |
|---|---------------------|------------|--------|------------|
| Year | KSI Casualty Totals | | Index | |
| | Actual | Projection | Actual | Projection |
| 2000 | 81 | | | |
| 2001 | 91 | | | |
| 2002 | 89 | | | |
| 2003 | 94 | | | |
| 2004 | 77 | | | |
| 2005 | 70 | | | |
| 2006 | 67 | | | |
| 2007 | 78 | | | |
| 2008 | 54 | | | |
| 2009 | 49 | | | |
| 2005-2009 Baseline | 64 | | 100 | |
| 2010 | 58 | 56 | 91 | 88 |
| 2011 | 57 | 54 | 90 | 85 |
| 2012 | 47 | 52 | 74 | 81 |
| 2013 | 55 | 50 | 86 | 78 |
| 2014 | 53 | 48 | 83 | 75 |
| 2015 | 49 | 46 | 77 | 72 |
| Apr 2015-Mar 2016 | 52 | 45 | 82 | 71 |
| Jul 2015-Jun 2016 | 49 | 45 | 77 | 71 |
| Oct 2015-Sep 2016 | 42 | 44 | 66 | 70 |
| 2016 | | 44 | | 69 |
| 2017 | | 42 | | 66 |
| 2018 | | 41 | | 64 |
| 2019 | | 39 | | 61 |
| 2020 | | 38 | | 60 |

Note: Index is based on 2005-2009 average



VISION 2020 FACTSHEET



DATA SOLUTIONS DEPARTMENT

TRAFFORD KSI CASUALTY STATISTICS

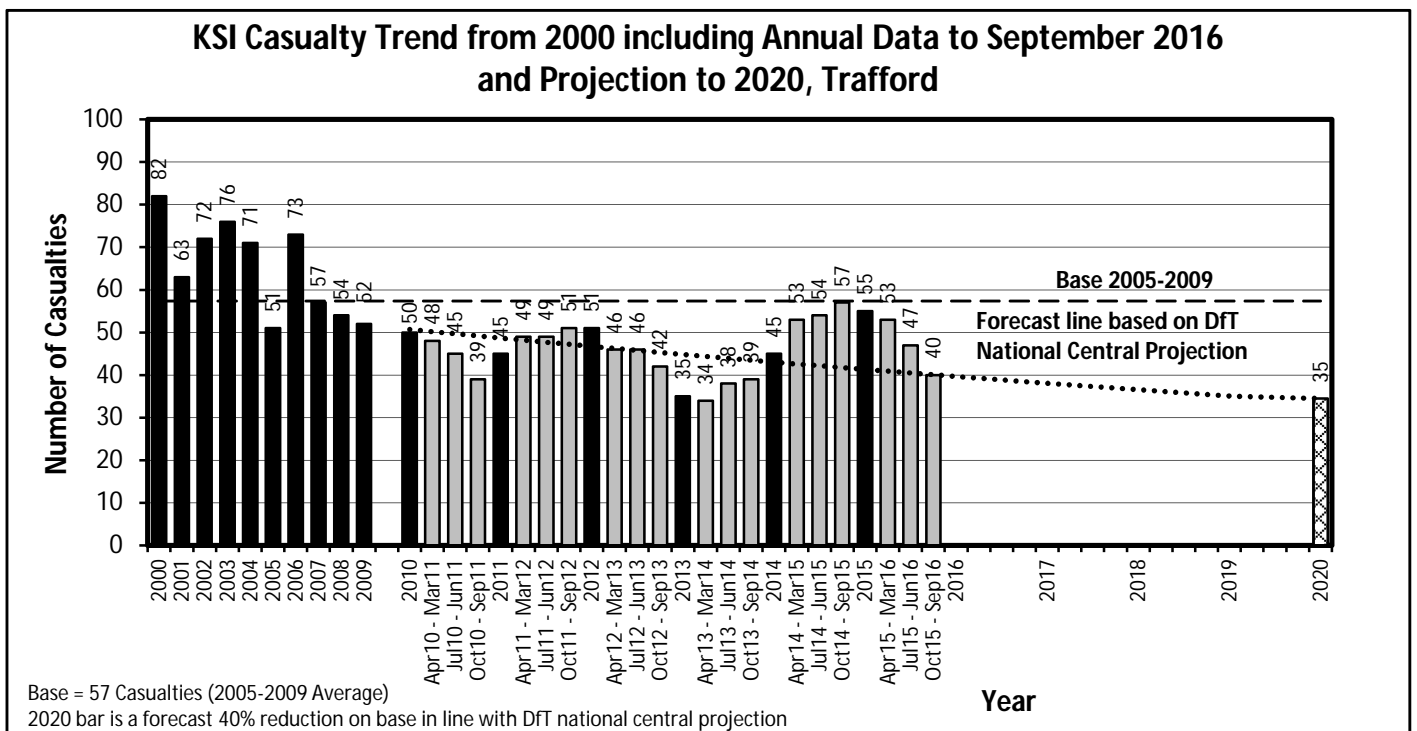
Latest 12 Months Data October 2015 to September 2016

KSI Casualties: Casualty Trend 2000 - September 2016 and Projection to 2020

The table shows Trafford KSI casualties from 2000 - September 2016 and forecast casualty reductions based on the DfT National Central Projection as outlined in the Strategic Framework for Road Safety

| KSI Casualty Trend 2000 - September 2016 and Projection to 2020 | | | | |
|---|---------------------|------------|--------|------------|
| Year | KSI Casualty Totals | | Index | |
| | Actual | Projection | Actual | Projection |
| 2000 | 82 | | | |
| 2001 | 63 | | | |
| 2002 | 72 | | | |
| 2003 | 76 | | | |
| 2004 | 71 | | | |
| 2005 | 51 | | | |
| 2006 | 73 | | | |
| 2007 | 57 | | | |
| 2008 | 54 | | | |
| 2009 | 52 | | | |
| 2005-2009 Baseline | 57 | | 100 | |
| 2010 | 50 | 51 | 87 | 88 |
| 2011 | 45 | 49 | 78 | 85 |
| 2012 | 51 | 47 | 89 | 81 |
| 2013 | 35 | 45 | 61 | 78 |
| 2014 | 45 | 43 | 78 | 75 |
| 2015 | 55 | 41 | 96 | 72 |
| Apr 2015-Mar 2016 | 53 | 41 | 92 | 71 |
| Jul 2015-Jun 2016 | 47 | 41 | 82 | 71 |
| Oct 2015-Sep 2016 | 40 | 40 | 70 | 70 |
| 2016 | | 40 | | 69 |
| 2017 | | 38 | | 66 |
| 2018 | | 37 | | 64 |
| 2019 | | 35 | | 61 |
| 2020 | | 35 | | 60 |

Note: Index is based on 2005-2009 average



VISION 2020 FACTSHEET



DATA SOLUTIONS DEPARTMENT

WIGAN KSI CASUALTY STATISTICS

Latest 12 Months Data October 2015 to September 2016

KSI Casualties: Casualty Trend 2000 - September 2016 and Projection to 2020

The table shows Wigan KSI casualties from 2000 - September 2016 and forecast casualty reductions based on the DfT National Central Projection as outlined in the Strategic Framework for Road Safety

| KSI Casualty Trend 2000 - September 2016 and Projection to 2020 | | | | |
|---|---------------------|------------|--------|------------|
| Year | KSI Casualty Totals | | Index | |
| | Actual | Projection | Actual | Projection |
| 2000 | 149 | | | |
| 2001 | 125 | | | |
| 2002 | 132 | | | |
| 2003 | 120 | | | |
| 2004 | 120 | | | |
| 2005 | 130 | | | |
| 2006 | 96 | | | |
| 2007 | 99 | | | |
| 2008 | 95 | | | |
| 2009 | 97 | | | |
| 2005-2009 Baseline | 103 | | 100 | |
| 2010 | 62 | 91 | 60 | 88 |
| 2011 | 82 | 88 | 79 | 85 |
| 2012 | 74 | 84 | 72 | 81 |
| 2013 | 65 | 81 | 63 | 78 |
| 2014 | 62 | 78 | 60 | 75 |
| 2015 | 73 | 74 | 71 | 72 |
| Apr 2015-Mar 2016 | 61 | 74 | 59 | 71 |
| Jul 2015-Jun 2016 | 49 | 73 | 47 | 71 |
| Oct 2015-Sep 2016 | 53 | 72 | 51 | 70 |
| 2016 | | 71 | | 69 |
| 2017 | | 69 | | 66 |
| 2018 | | 66 | | 64 |
| 2019 | | 63 | | 61 |
| 2020 | | 62 | | 60 |

Note: Index is based on 2005-2009 average

