

VISION 2020 FACTSHEET



DATA SOLUTIONS DEPARTMENT

BOLTON KSI CASUALTY STATISTICS

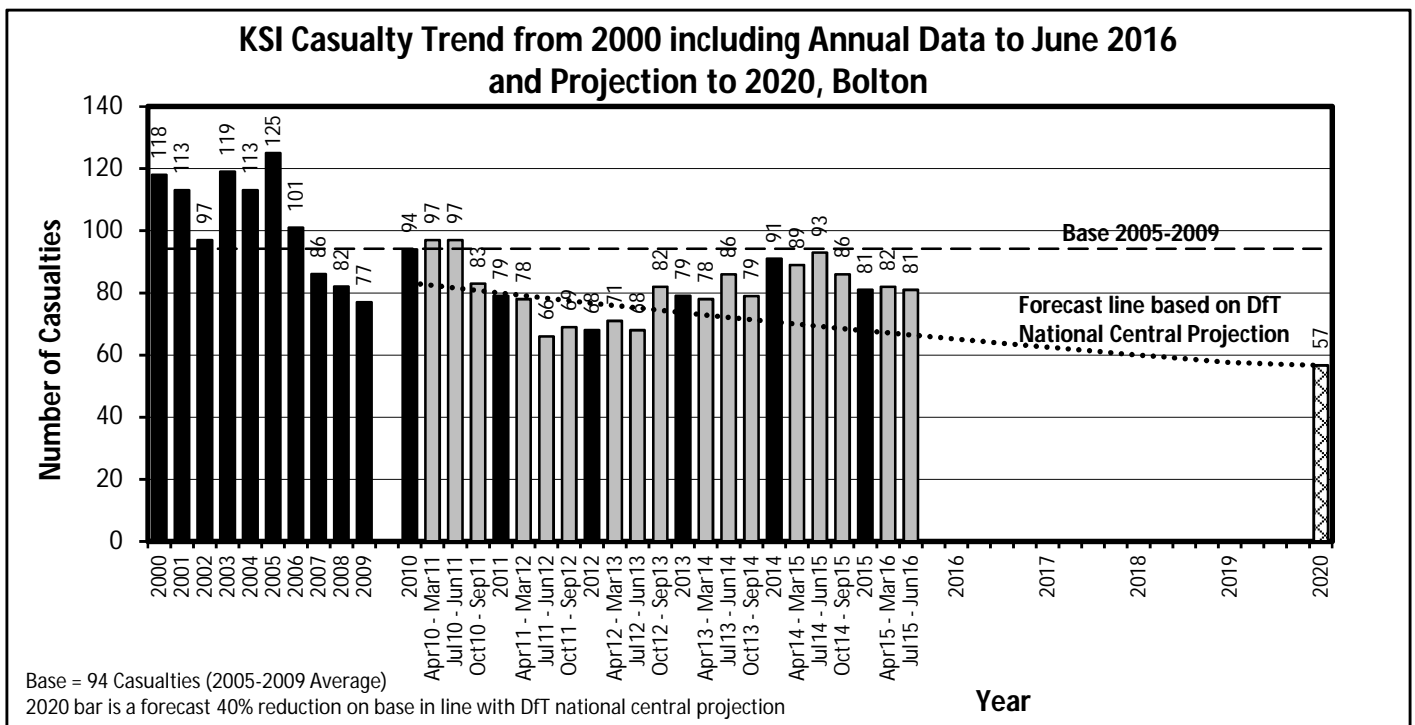
Latest 12 Months Data July 2015 to June 2016

KSI Casualties: Casualty Trend 2000 - June 2016 and Projection to 2020

The table shows Bolton KSI casualties from 2000 - June 2016 and forecast casualty reductions based on the DfT National Central Projection as outlined in the Strategic Framework for Road Safety

KSI Casualty Trend 2000 - June 2016 and Projection to 2020				
Year	KSI Casualty Totals		Index	
	Actual	Projection	Actual	Projection
2000	118			
2001	113			
2002	97			
2003	119			
2004	113			
2005	125			
2006	101			
2007	86			
2008	82			
2009	77			
2005-2009 Baseline	94		100	
2010	94	83	100	88
2011	79	80	84	85
2012	68	77	72	81
2013	79	74	84	78
2014	91	71	97	75
2015	81	68	86	72
Apr 2015-Mar 2016	82	67	87	71
Jul 2015-Jun 2016	81	66	86	71
2016		65		69
2017		63		66
2018		60		64
2019		58		61
2020		57		60

Note: Index is based on 2005-2009 average



VISION 2020 FACTSHEET



DATA SOLUTIONS DEPARTMENT

BURY KSI CASUALTY STATISTICS

Latest 12 Months Data July 2015 to June 2016

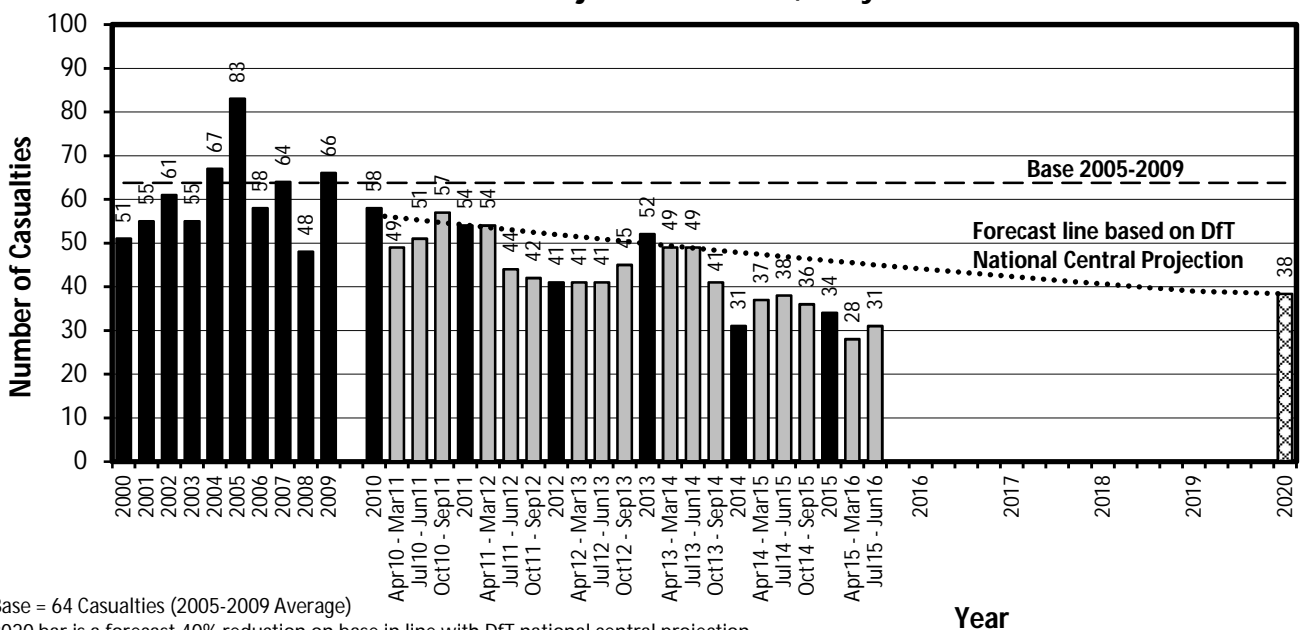
KSI Casualties: Casualty Trend 2000 - June 2016 and Projection to 2020

The table shows Bury KSI casualties from 2000 - June 2016 and forecast casualty reductions based on the DFT National Central Projection as outlined in the Strategic Framework for Road Safety

KSI Casualty Trend 2000 - June 2016 and Projection to 2020				
Year	KSI Casualty Totals		Index	
	Actual	Projection	Actual	Projection
2000	51			
2001	55			
2002	61			
2003	55			
2004	67			
2005	83			
2006	58			
2007	64			
2008	48			
2009	66			
2005-2009 Baseline	64		100	
2010	58	56	91	88
2011	54	54	85	85
2012	41	52	64	81
2013	52	50	82	78
2014	31	48	49	75
2015	34	46	53	72
Apr 2015-Mar 2016	28	45	44	71
Jul 2015-Jun 2016	31	45	49	71
2016		44		69
2017		42		66
2018		41		64
2019		39		61
2020		38		60

Note: Index is based on 2005-2009 average

KSI Casualty Trend from 2000 including Annual Data to June 2016 and Projection to 2020, Bury



VISION 2020 FACTSHEET



DATA SOLUTIONS DEPARTMENT

MANCHESTER KSI CASUALTY STATISTICS

Latest 12 Months Data July 2015 to June 2016

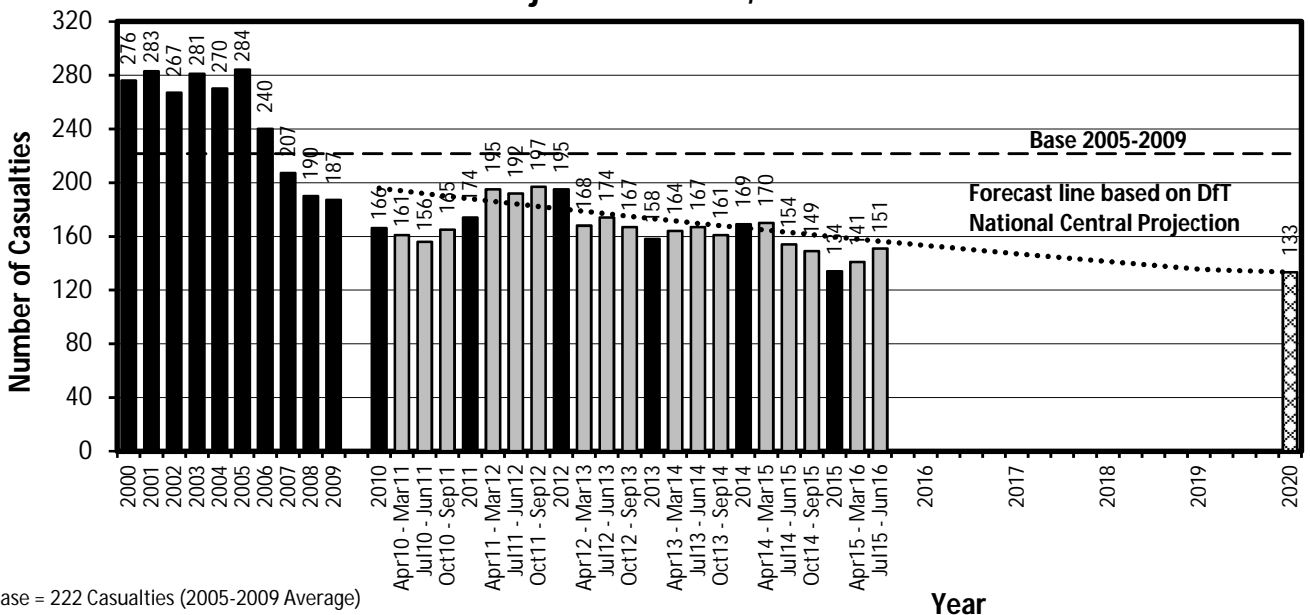
KSI Casualties: Casualty Trend 2000 - June 2016 and Projection to 2020

The table shows Manchester KSI casualties from 2000 - June 2016 and forecast casualty reductions based on the DfT National Central Projection as outlined in the Strategic Framework for Road Safety

KSI Casualty Trend 2000 - June 2016 and Projection to 2020				
Year	KSI Casualty Totals		Index	
	Actual	Projection	Actual	Projection
2000	276			
2001	283			
2002	267			
2003	281			
2004	270			
2005	284			
2006	240			
2007	207			
2008	190			
2009	187			
2005-2009 Baseline	222		100	
2010	166	196	75	88
2011	174	188	79	85
2012	195	180	88	81
2013	158	173	71	78
2014	169	166	76	75
2015	134	160	60	72
Apr 2015-Mar 2016	141	158	64	71
Jul 2015-Jun 2016	151	156	68	71
2016		153		69
2017		147		66
2018		141		64
2019		136		61
2020		133		60

Note: Index is based on 2005-2009 average

KSI Casualty Trend from 2000 including Annual Data to June 2016 and Projection to 2020, Manchester



Base = 222 Casualties (2005-2009 Average)
 2020 bar is a forecast 40% reduction on base in line with DfT national central projection

VISION 2020 FACTSHEET



DATA SOLUTIONS DEPARTMENT

OLDHAM KSI CASUALTY STATISTICS

Latest 12 Months Data July 2015 to June 2016

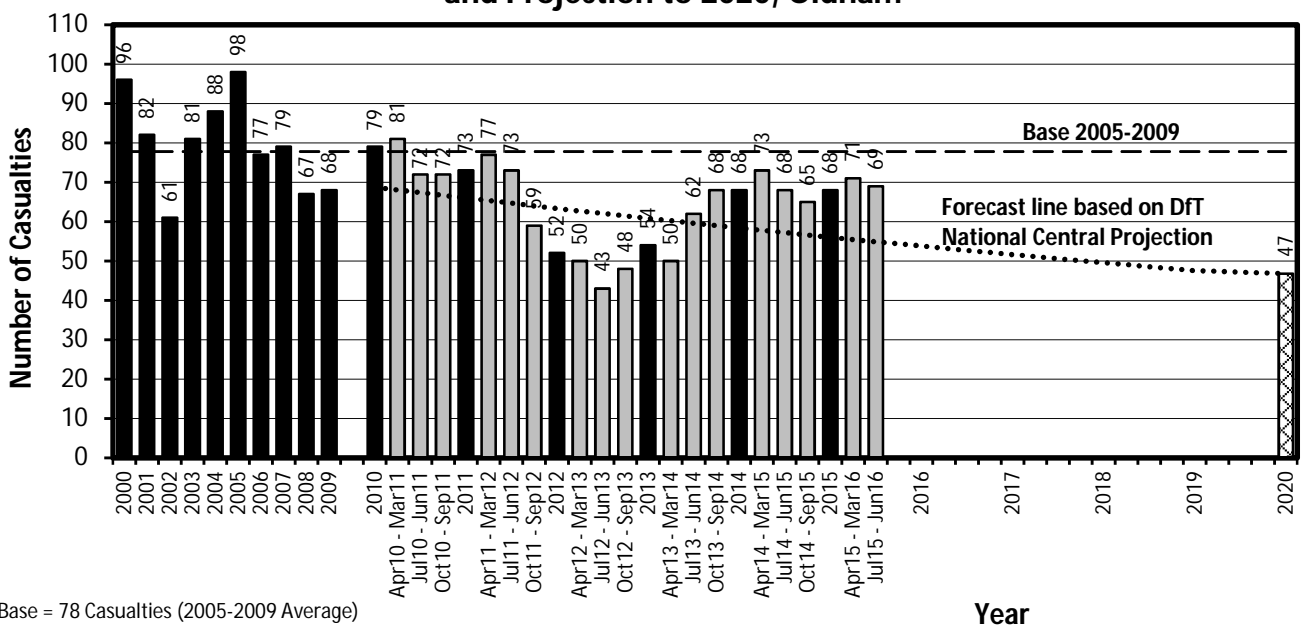
KSI Casualties: Casualty Trend 2000 - June 2016 and Projection to 2020

The table shows Oldham KSI casualties from 2000 - June 2016 and forecast casualty reductions based on the DfT National Central Projection as outlined in the Strategic Framework for Road Safety

KSI Casualty Trend 2000 - June 2016 and Projection to 2020				
Year	KSI Casualty Totals		Index	
	Actual	Projection	Actual	Projection
2000	96			
2001	82			
2002	61			
2003	81			
2004	88			
2005	98			
2006	77			
2007	79			
2008	67			
2009	68			
2005-2009 Baseline	78		100	
2010	79	69	102	88
2011	73	66	94	85
2012	52	63	67	81
2013	54	61	69	78
2014	68	58	87	75
2015	68	56	87	72
Apr 2015-Mar 2016	71	55	91	71
Jul 2015-Jun 2016	69	55	89	71
2016		54		69
2017		52		66
2018		50		64
2019		48		61
2020		47		60

Note: Index is based on 2005-2009 average

KSI Casualty Trend from 2000 including Annual Data to June 2016 and Projection to 2020, Oldham



Base = 78 Casualties (2005-2009 Average)

2020 bar is a forecast 40% reduction on base in line with DfT national central projection

VISION 2020 FACTSHEET



DATA SOLUTIONS DEPARTMENT

ROCHDALE KSI CASUALTY STATISTICS

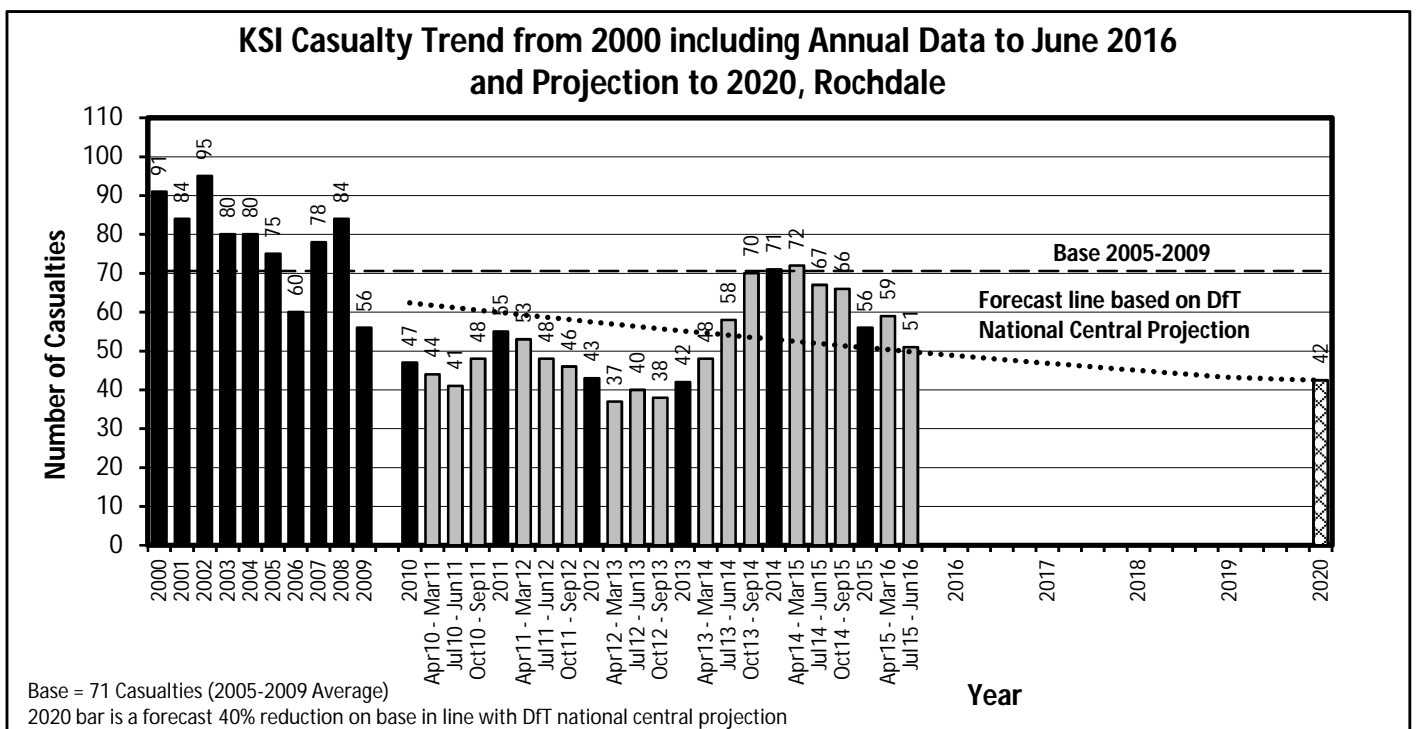
Latest 12 Months Data July 2015 to June 2016

KSI Casualties: Casualty Trend 2000 - June 2016 and Projection to 2020

The table shows Rochdale KSI casualties from 2000 - June 2016 and forecast casualty reductions based on the DfT National Central Projection as outlined in the Strategic Framework for Road Safety

KSI Casualty Trend 2000 - June 2016 and Projection to 2020				
Year	KSI Casualty Totals		Index	
	Actual	Projection	Actual	Projection
2000	91			
2001	84			
2002	95			
2003	80			
2004	80			
2005	75			
2006	60			
2007	78			
2008	84			
2009	56			
2005-2009 Baseline	71		100	
2010	47	62	67	88
2011	55	60	78	85
2012	43	57	61	81
2013	42	55	59	78
2014	71	53	101	75
2015	56	51	79	72
<i>Apr 2015-Mar 2016</i>	59	50	84	71
<i>Jul 2015-Jun 2016</i>	51	50	72	71
2016		49		69
2017		47		66
2018		45		64
2019		43		61
2020		42		60

Note: Index is based on 2005-2009 average



VISION 2020 FACTSHEET



DATA SOLUTIONS DEPARTMENT

SALFORD KSI CASUALTY STATISTICS

Latest 12 Months Data July 2015 to June 2016

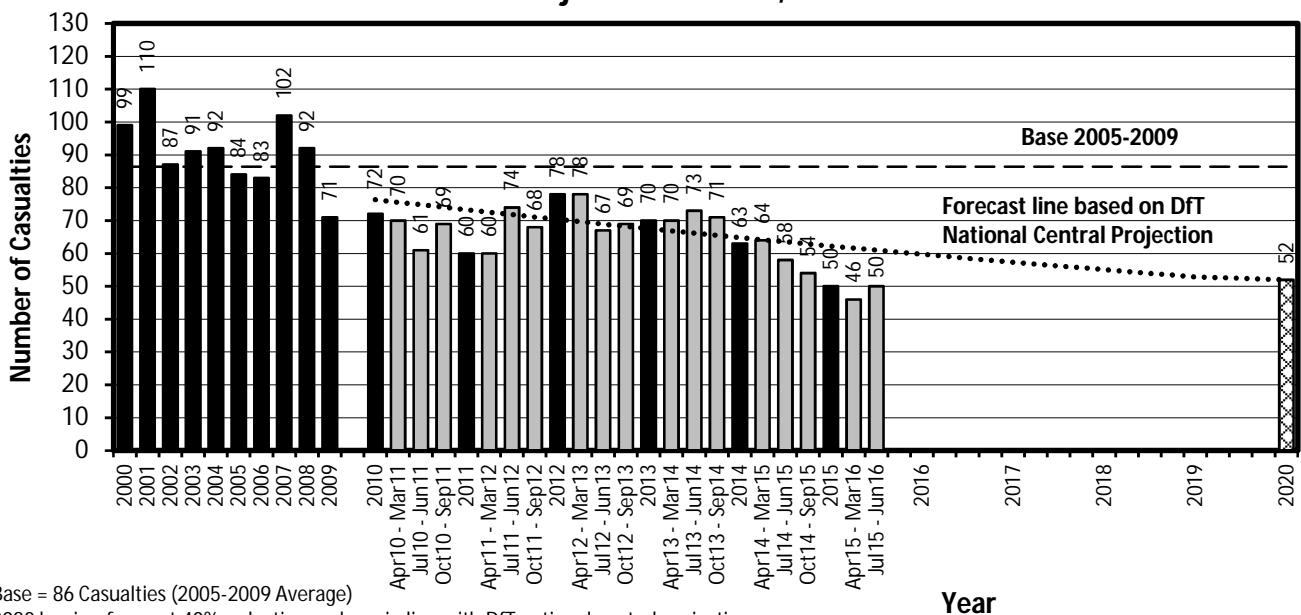
KSI Casualties: Casualty Trend 2000 - June 2016 and Projection to 2020

The table shows Salford KSI casualties from 2000 - June 2016 and forecast casualty reductions based on the DfT National Central Projection as outlined in the Strategic Framework for Road Safety

KSI Casualty Trend 2000 - June 2016 and Projection to 2020				
Year	KSI Casualty Totals		Index	
	Actual	Projection	Actual	Projection
2000	99			
2001	110			
2002	87			
2003	91			
2004	92			
2005	84			
2006	83			
2007	102			
2008	92			
2009	71			
2005-2009 Baseline	86		100	
2010	72	76	83	88
2011	60	73	69	85
2012	78	70	90	81
2013	70	68	81	78
2014	63	65	73	75
2015	50	62	58	72
Apr 2015-Mar 2016	46	62	53	71
Jul 2015-Jun 2016	50	61	58	71
2016		60		69
2017		57		66
2018		55		64
2019		53		61
2020		52		60

Note: Index is based on 2005-2009 average

KSI Casualty Trend from 2000 including Annual Data June 2016 and Projection to 2020, Salford



VISION 2020 FACTSHEET



DATA SOLUTIONS DEPARTMENT

STOCKPORT KSI CASUALTY STATISTICS

Latest 12 Months Data July 2015 to June 2016

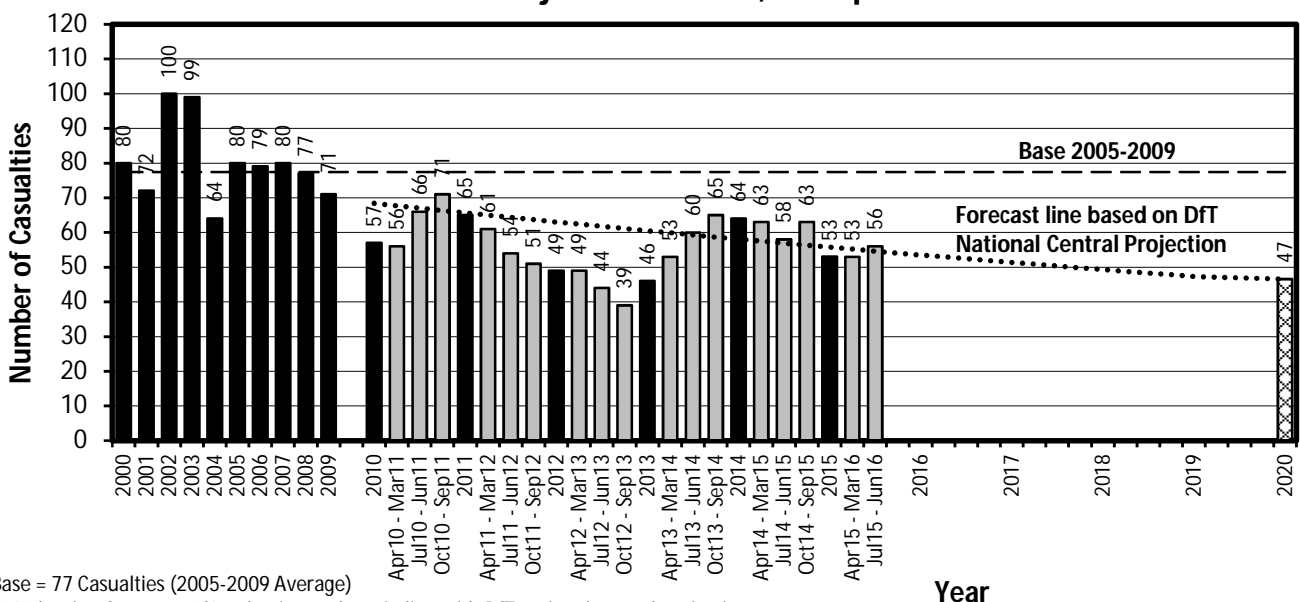
KSI Casualties: Casualty Trend 2000 - June 2016 and Projection to 2020

The table shows Stockport KSI casualties from 2000 - June 2016 and forecast casualty reductions based on the DfT National Central Projection as outlined in the Strategic Framework for Road Safety

KSI Casualty Trend 2000 - June 2016 and Projection to 2020				
Year	KSI Casualty Totals		Index	
	Actual	Projection	Actual	Projection
2000	80			
2001	72			
2002	100			
2003	99			
2004	64			
2005	80			
2006	79			
2007	80			
2008	77			
2009	71			
2005-2009 Baseline	77		100	
2010	57	68	74	88
2011	65	66	84	85
2012	49	63	63	81
2013	46	61	59	78
2014	64	58	83	75
2015	53	56	68	72
Apr 2015-Mar 2016	53	55	68	71
Jul 2015-Jun 2016	56	55	72	71
2016		54		69
2017		51		66
2018		49		64
2019		47		61
2020		47		60

Note: Index is based on 2005-2009 average

KSI Casualty Trend from 2000 including Annual Data to June 2016 and Projection to 2020, Stockport



Base = 77 Casualties (2005-2009 Average)

2020 bar is a forecast 40% reduction on base in line with DfT national central projection

VISION 2020 FACTSHEET



DATA SOLUTIONS DEPARTMENT

TAMESIDE KSI CASUALTY STATISTICS

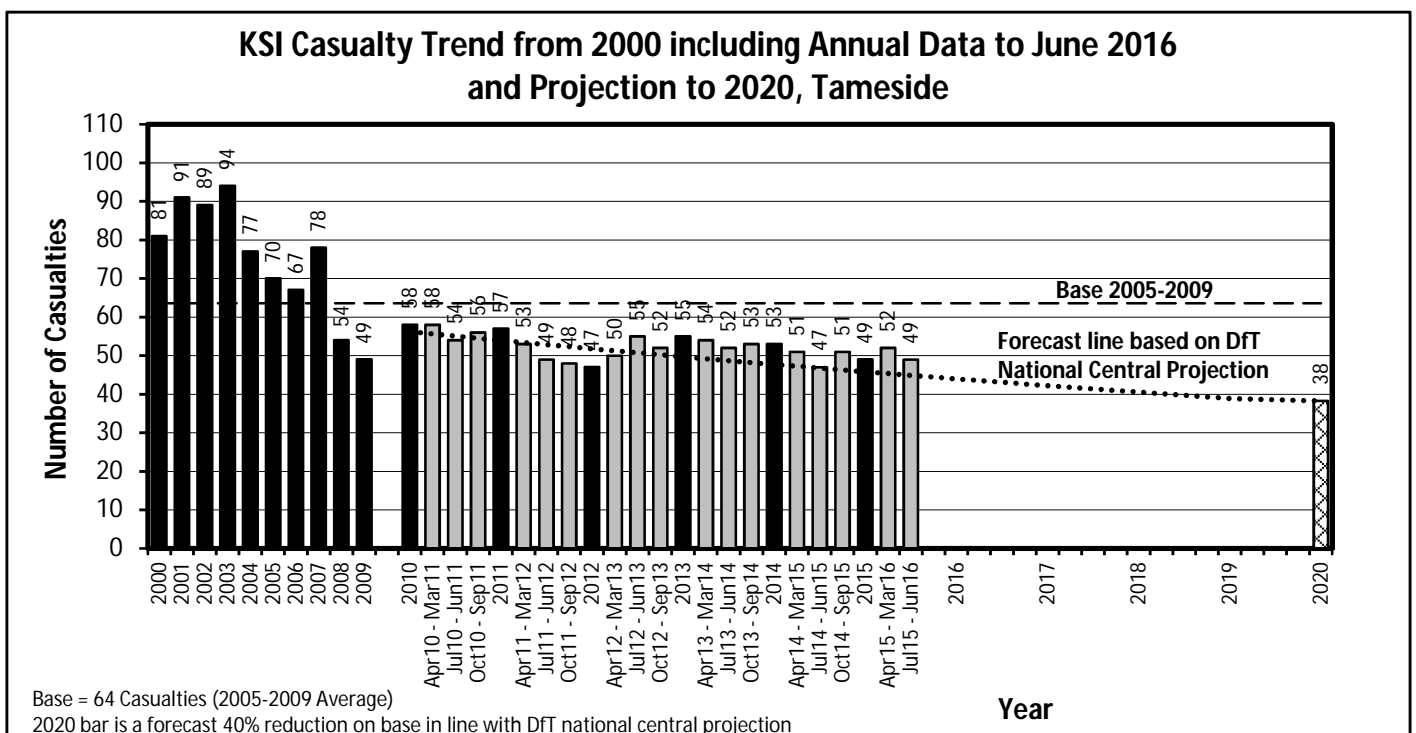
Latest 12 Months Data July 2015 to June 2016

KSI Casualties: Casualty Trend 2000 - June 2016 and Projection to 2020

The table shows Tameside KSI casualties from 2000 - June 2016 and forecast casualty reductions based on the DfT National Central Projection as outlined in the Strategic Framework for Road Safety

KSI Casualty Trend 2000 - June 2016 and Projection to 2020				
Year	KSI Casualty Totals		Index	
	Actual	Projection	Actual	Projection
2000	81			
2001	91			
2002	89			
2003	94			
2004	77			
2005	70			
2006	67			
2007	78			
2008	54			
2009	49			
2005-2009 Baseline	64		100	
2010	58	56	91	88
2011	57	54	90	85
2012	47	52	74	81
2013	55	50	86	78
2014	53	48	83	75
2015	49	46	77	72
Apr 2015-Mar 2016	52	45	82	71
Jul 2015-Jun 2016	49	45	77	71
2016		44		69
2017		42		66
2018		41		64
2019		39		61
2020		38		60

Note: Index is based on 2005-2009 average



VISION 2020 FACTSHEET



DATA SOLUTIONS DEPARTMENT

TRAFFORD KSI CASUALTY STATISTICS

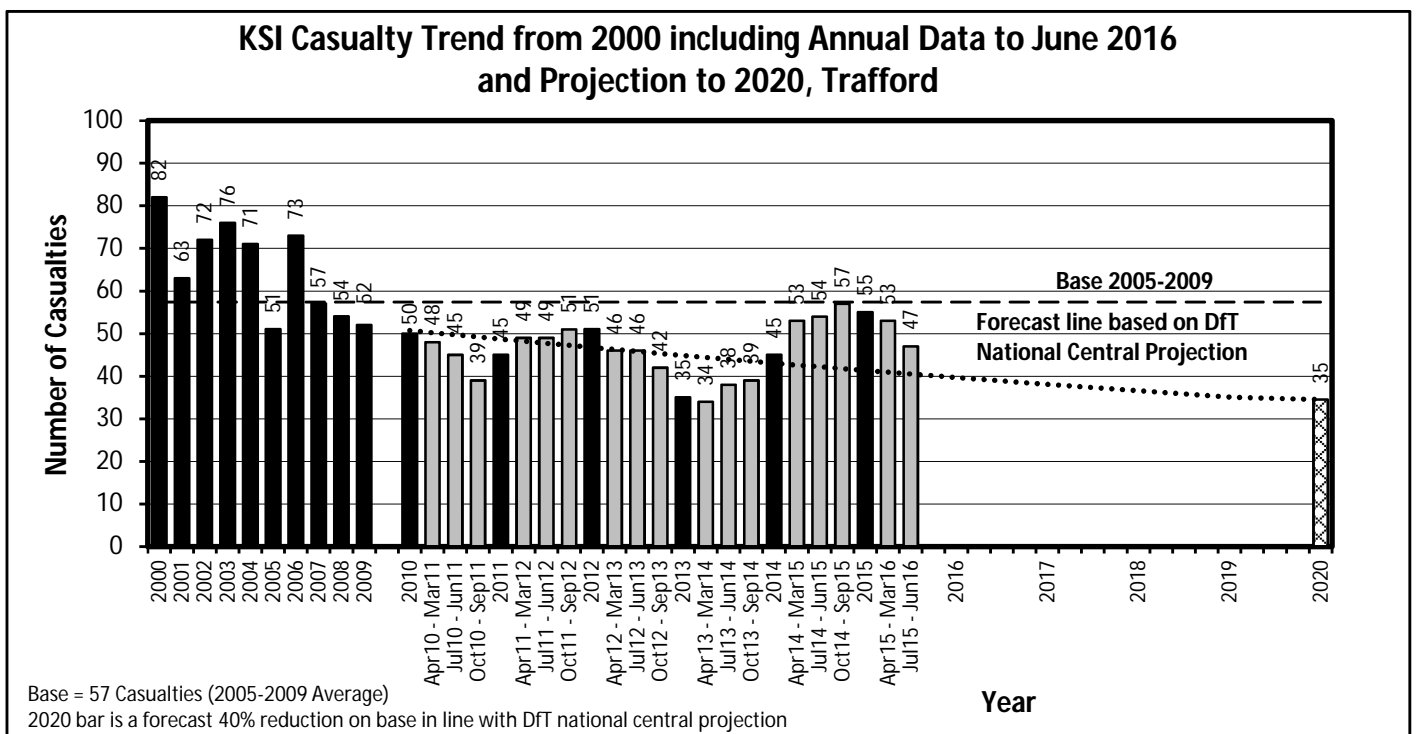
Latest 12 Months Data July 2015 to June 2016

KSI Casualties: Casualty Trend 2000 - June 2016 and Projection to 2020

The table shows Trafford KSI casualties from 2000 - June 2016 and forecast casualty reductions based on the DfT National Central Projection as outlined in the Strategic Framework for Road Safety

KSI Casualty Trend 2000 - June 2016 and Projection to 2020				
Year	KSI Casualty Totals		Index	
	Actual	Projection	Actual	Projection
2000	82			
2001	63			
2002	72			
2003	76			
2004	71			
2005	51			
2006	73			
2007	57			
2008	54			
2009	52			
2005-2009 Baseline	57		100	
2010	50	51	87	88
2011	45	49	78	85
2012	51	47	89	81
2013	35	45	61	78
2014	45	43	78	75
2015	55	41	96	72
Apr 2015-Mar 2016	53	41	92	71
Jul 2015-Jun 2016	47	41	82	71
2016		40		69
2017		38		66
2018		37		64
2019		35		61
2020		35		60

Note: Index is based on 2005-2009 average



VISION 2020 FACTSHEET



DATA SOLUTIONS DEPARTMENT

WIGAN KSI CASUALTY STATISTICS

Latest 12 Months Data July 2015 to June 2016

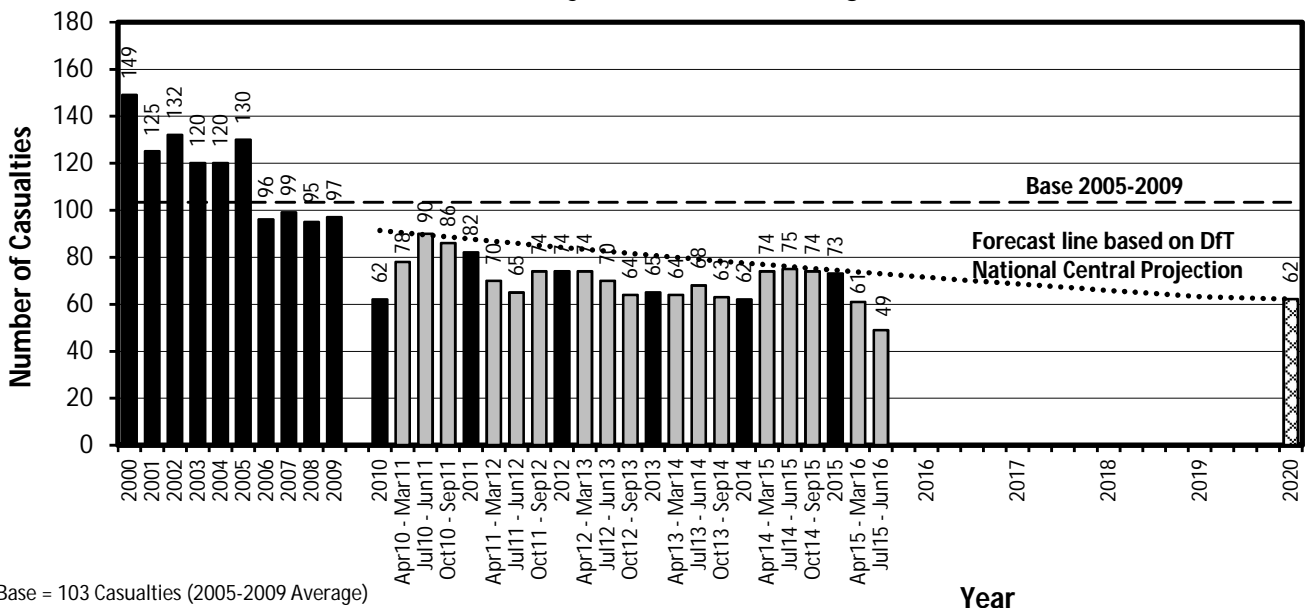
KSI Casualties: Casualty Trend 2000 - June 2016 and Projection to 2020

The table shows Wigan KSI casualties from 2000 - June 2016 and forecast casualty reductions based on the DfT National Central Projection as outlined in the Strategic Framework for Road Safety

KSI Casualty Trend 2000 - June 2016 and Projection to 2020				
Year	KSI Casualty Totals		Index	
	Actual	Projection	Actual	Projection
2000	149			
2001	125			
2002	132			
2003	120			
2004	120			
2005	130			
2006	96			
2007	99			
2008	95			
2009	97			
2005-2009 Baseline	103		100	
2010	62	91	60	88
2011	82	88	79	85
2012	74	84	72	81
2013	65	81	63	78
2014	62	78	60	75
2015	73	74	71	72
Apr 2015-Mar 2016	61	74	59	71
Jul 2015-Jun 2016	49	73	47	71
2016		71		69
2017		69		66
2018		66		64
2019		63		61
2020		62		60

Note: Index is based on 2005-2009 average

KSI Casualty Trend from 2000 including Annual Data to June 2016 and Projection to 2020, Wigan



Base = 103 Casualties (2005-2009 Average)

2020 bar is a forecast 40% reduction on base in line with DfT national central projection