

VISION 2020 FACTSHEET



DATA SOLUTIONS DEPARTMENT

BOLTON KSI CASUALTY STATISTICS

Latest 12 Months Data October 2015 to September 2016

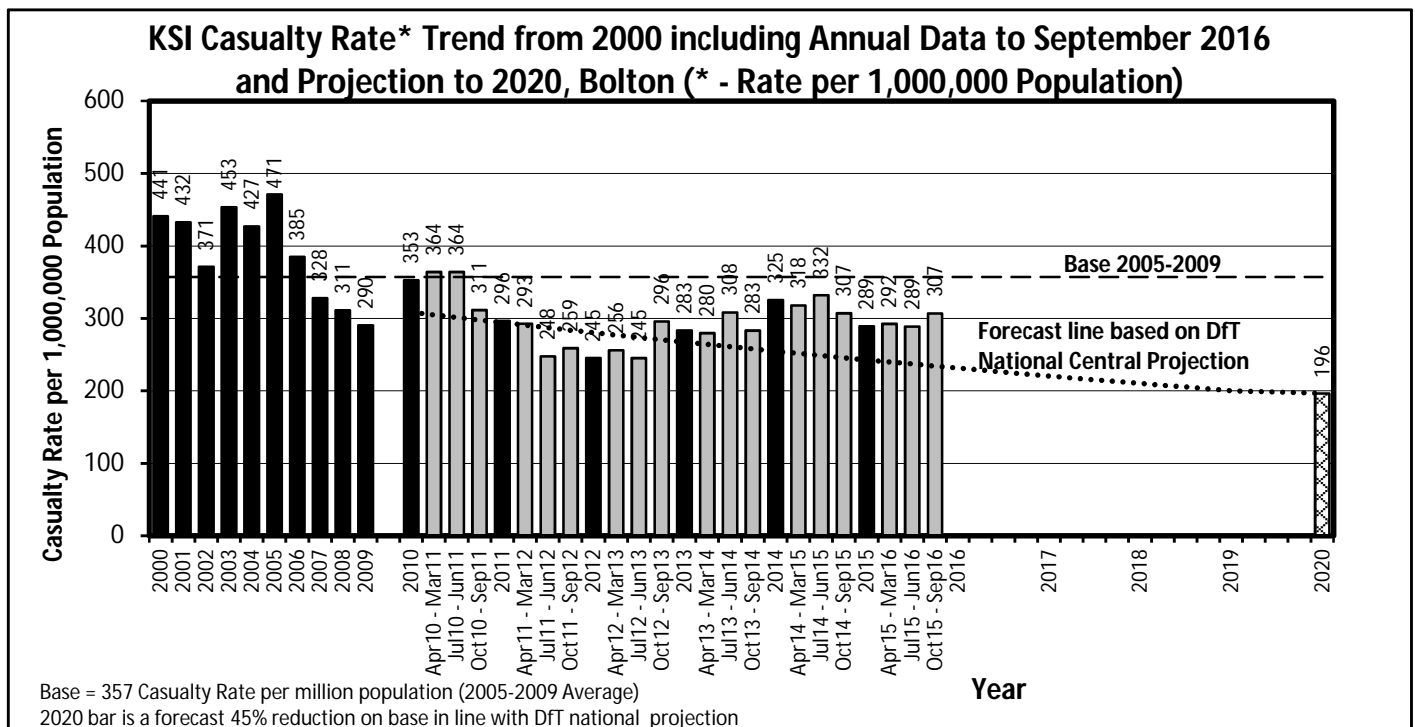
KSI Casualty Rates: Casualty Rate Trend 2000 - September 2016 and Projection to 2020

The table shows Bolton KSI casualty rates* from 2000 - September 2016 and forecast casualty reductions based on the DfT National Central Projection as outlined in the Strategic Framework for Road Safety. (*based on ONS population projections).

KSI Casualty Rate Trend 2000 - September 2016 and Projection to 2020				
Year	KSI Casualty Totals**		Index	
	Actual	Projection	Actual	Projection
2000	441			
2001	432			
2002	371			
2003	453			
2004	427			
2005	471			
2006	385			
2007	328			
2008	311			
2009	290			
2005-2009 Baseline	357		100	
2010	353	309	99	86
2011	296	294	83	82
2012	245	280	69	78
2013	283	267	79	75
2014	325	255	91	71
2015	289	243	81	68
Apr 2015-Mar 2016	292	240	82	67
Jul 2015-Jun 2016	289	237	81	66
Oct 2015-Sep 2016	307	234	86	66
2016		231		65
2017		221		62
2018		210		59
2019		200		56
2020		196		55

Notes: ** - KSI rates per 1,000,000 population

Index is based on 2005-2009 average



VISION 2020 FACTSHEET



DATA SOLUTIONS DEPARTMENT

BURY KSI CASUALTY STATISTICS

Latest 12 Months Data October 2015 to September 2016

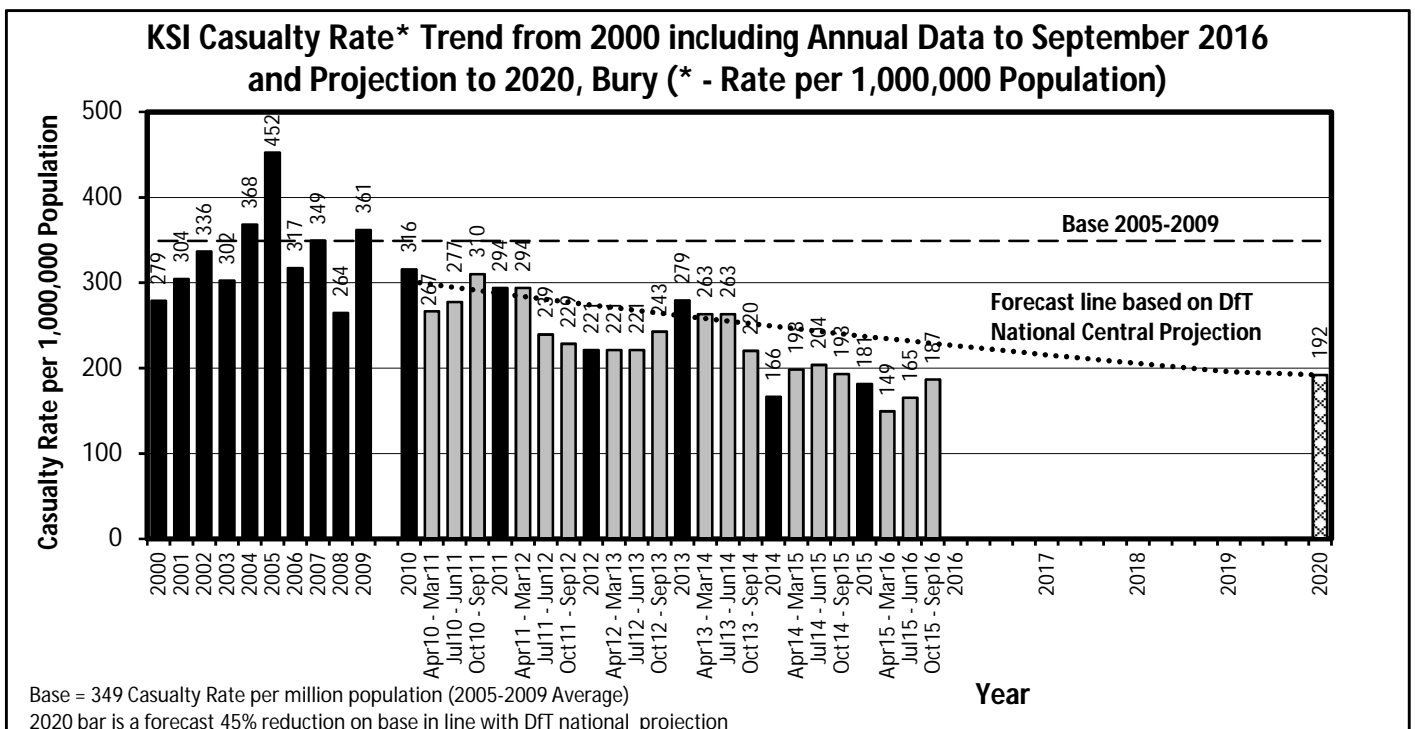
KSI Casualty Rates: Casualty Rate Trend 2000 - September 2016 and Projection to 2020

The table shows Bury KSI casualty rates* from 2000 - September 2016 and forecast casualty reductions based on the DFT National Central Projection as outlined in the Strategic Framework for Road Safety. (*based on ONS population projections).

KSI Casualty Rate Trend 2000 - September 2016 and Projection to 2020				
Year	KSI Casualty Totals**		Index	
	Actual	Projection	Actual	Projection
2000	279			
2001	304			
2002	336			
2003	302			
2004	368			
2005	452			
2006	317			
2007	349			
2008	264			
2009	361			
2005-2009 Baseline	349		100	
2010	316	302	90	86
2011	294	287	84	82
2012	221	274	63	78
2013	279	261	80	75
2014	166	249	48	71
2015	181	237	52	68
Apr 2015-Mar 2016	149	234	43	67
Jul 2015-Jun 2016	165	232	47	66
Oct 2015-Sep 2016	187	229	53	66
2016		226		65
2017		216		62
2018		205		59
2019		196		56
2020		192		55

Notes: ** - KSI rates per 1,000,000 population

Index is based on 2005-2009 average



VISION 2020 FACTSHEET



DATA SOLUTIONS DEPARTMENT

MANCHESTER KSI CASUALTY STATISTICS

Latest 12 Months Data October 2015 to September 2016

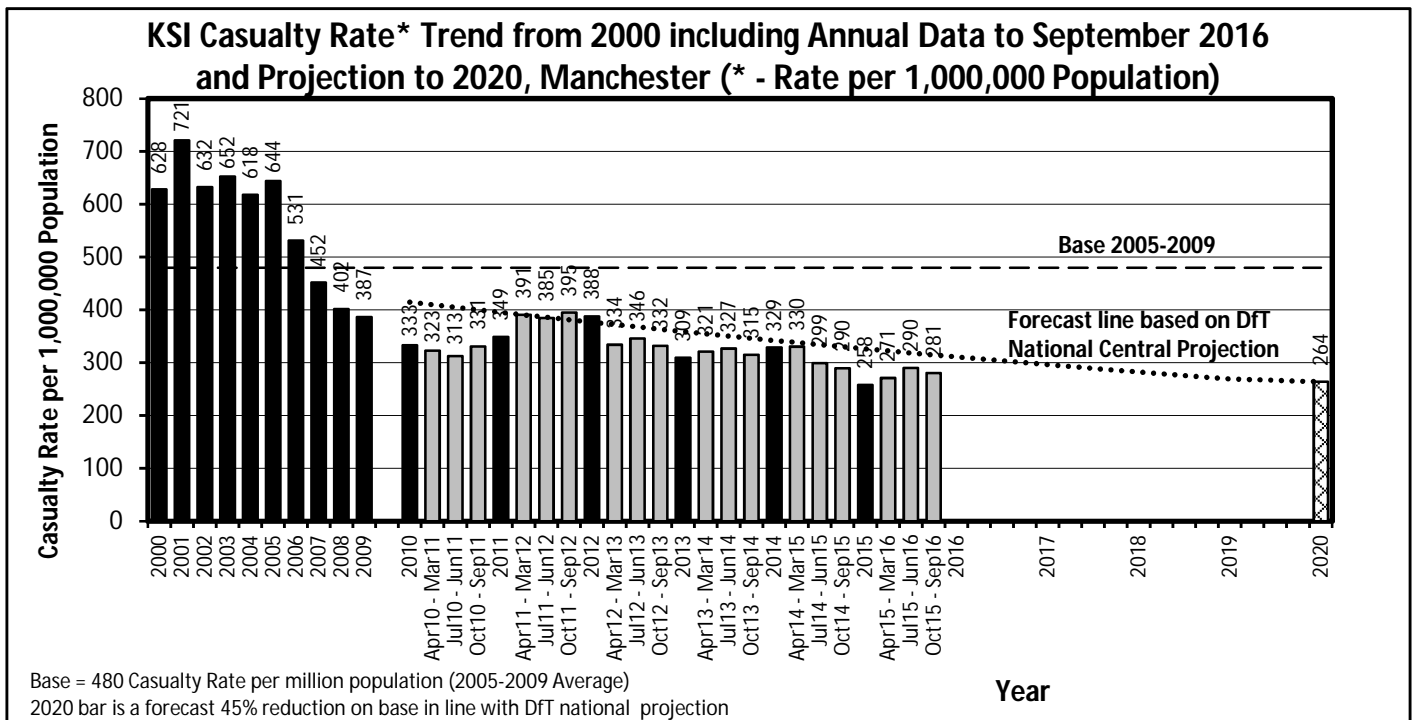
KSI Casualty Rates: Casualty Rate Trend 2000 - September 2016 and Projection to 2020

The table shows Manchester KSI casualty rates* from 2000 - September 2016 and forecast casualty reductions based on the DfT National Central Projection as outlined in the Strategic Framework for Road Safety. (*based on ONS population projections).

KSI Casualty Rate Trend 2000 - September 2016 and Projection to 2020				
Year	KSI Casualty Totals**		Index	
	Actual	Projection	Actual	Projection
2000	628			
2001	721			
2002	632			
2003	652			
2004	618			
2005	644			
2006	531			
2007	452			
2008	402			
2009	387			
2005-2009 Baseline	480		100	
2010	333	415	69	86
2011	349	395	73	82
2012	388	377	81	78
2013	309	359	64	75
2014	329	342	68	71
2015	258	326	54	68
Apr 2015-Mar 2016	271	322	56	67
Jul 2015-Jun 2016	290	319	60	66
Oct 2015-Sep 2016	281	315	58	66
2016		311		65
2017		296		62
2018		283		59
2019		269		56
2020		264		55

Notes: ** - KSI rates per 1,000,000 population

Index is based on 2005-2009 average



VISION 2020 FACTSHEET



DATA SOLUTIONS DEPARTMENT

OLDHAM KSI CASUALTY STATISTICS

Latest 12 Months Data October 2015 to September 2016

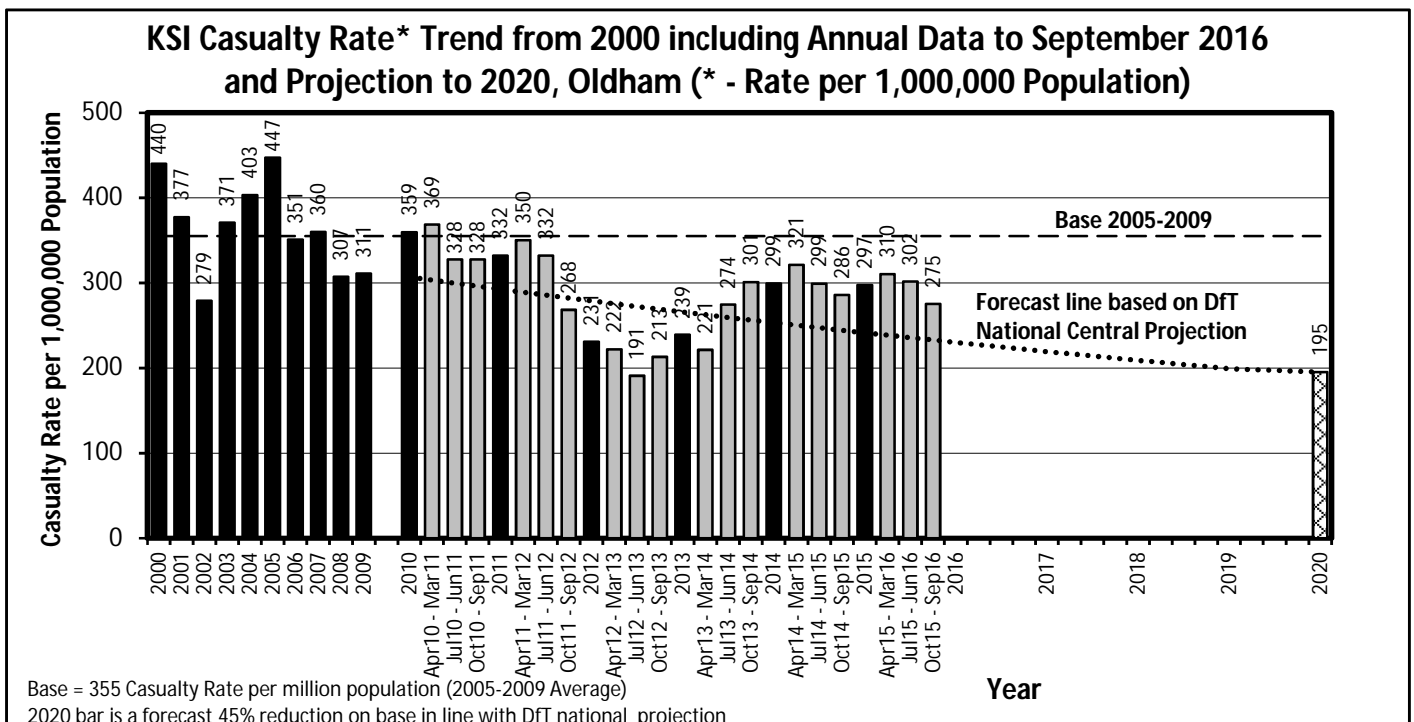
KSI Casualty Rates: Casualty Rate Trend 2000 - September 2016 and Projection to 2020

The table shows Oldham KSI casualty rates* from 2000 - September 2016 and forecast casualty reductions based on the DfT National Central Projection as outlined in the Strategic Framework for Road Safety. (*based on ONS population projections).

KSI Casualty Rate Trend 2000 - September 2016 and Projection to 2020				
Year	KSI Casualty Totals**		Index	
	Actual	Projection	Actual	Projection
2000	440			
2001	377			
2002	279			
2003	371			
2004	403			
2005	447			
2006	351			
2007	360			
2008	307			
2009	311			
2005-2009 Baseline	355		100	
2010	359	307	101	86
2011	332	292	94	82
2012	231	279	65	78
2013	239	266	67	75
2014	299	253	84	71
2015	297	241	84	68
Apr 2015-Mar 2016	310	239	87	67
Jul 2015-Jun 2016	302	236	85	66
Oct 2015-Sep 2016	275	233	78	66
2016		230		65
2017		219		62
2018		209		59
2019		199		56
2020		195		55

Notes: ** - KSI rates per 1,000,000 population

Index is based on 2005-2009 average



VISION 2020 FACTSHEET



DATA SOLUTIONS DEPARTMENT

ROCHDALE KSI CASUALTY STATISTICS

Latest 12 Months Data October 2015 to September 2016

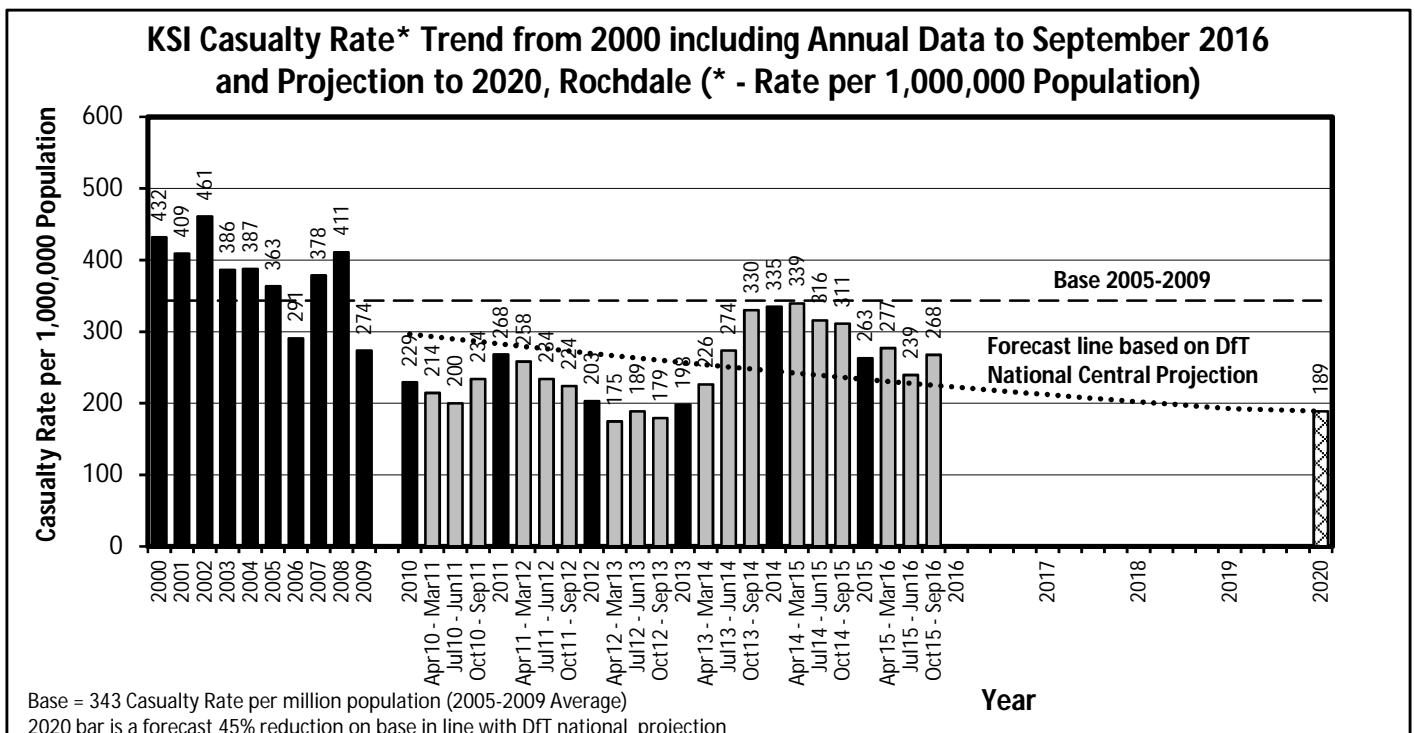
KSI Casualty Rates: Casualty Rate Trend 2000 - September 2016 and Projection to 2020

The table shows Rochdale KSI casualty rates* from 2000 - September 2016 and forecast casualty reductions based on the DfT National Central Projection as outlined in the Strategic Framework for Road Safety. (*based on ONS population projections).

KSI Casualty Rate Trend 2000 - September 2016 and Projection to 2020				
Year	KSI Casualty Totals**		Index	
	Actual	Projection	Actual	Projection
2000	432			
2001	409			
2002	461			
2003	386			
2004	387			
2005	363			
2006	291			
2007	378			
2008	411			
2009	274			
2005-2009 Baseline	343		100	
2010	229	297	67	86
2011	268	283	78	82
2012	203	270	59	78
2013	198	257	58	75
2014	335	245	97	71
2015	263	233	77	68
Apr 2015-Mar 2016	277	231	81	67
Jul 2015-Jun 2016	239	228	70	66
Oct 2015-Sep 2016	268	225	78	66
2016		222		65
2017		212		62
2018		202		59
2019		193		56
2020		189		55

Notes: ** - KSI rates per 1,000,000 population

Index is based on 2005-2009 average



VISION 2020 FACTSHEET



DATA SOLUTIONS DEPARTMENT

SALFORD KSI CASUALTY STATISTICS

Latest 12 Months Data October 2015 to September 2016

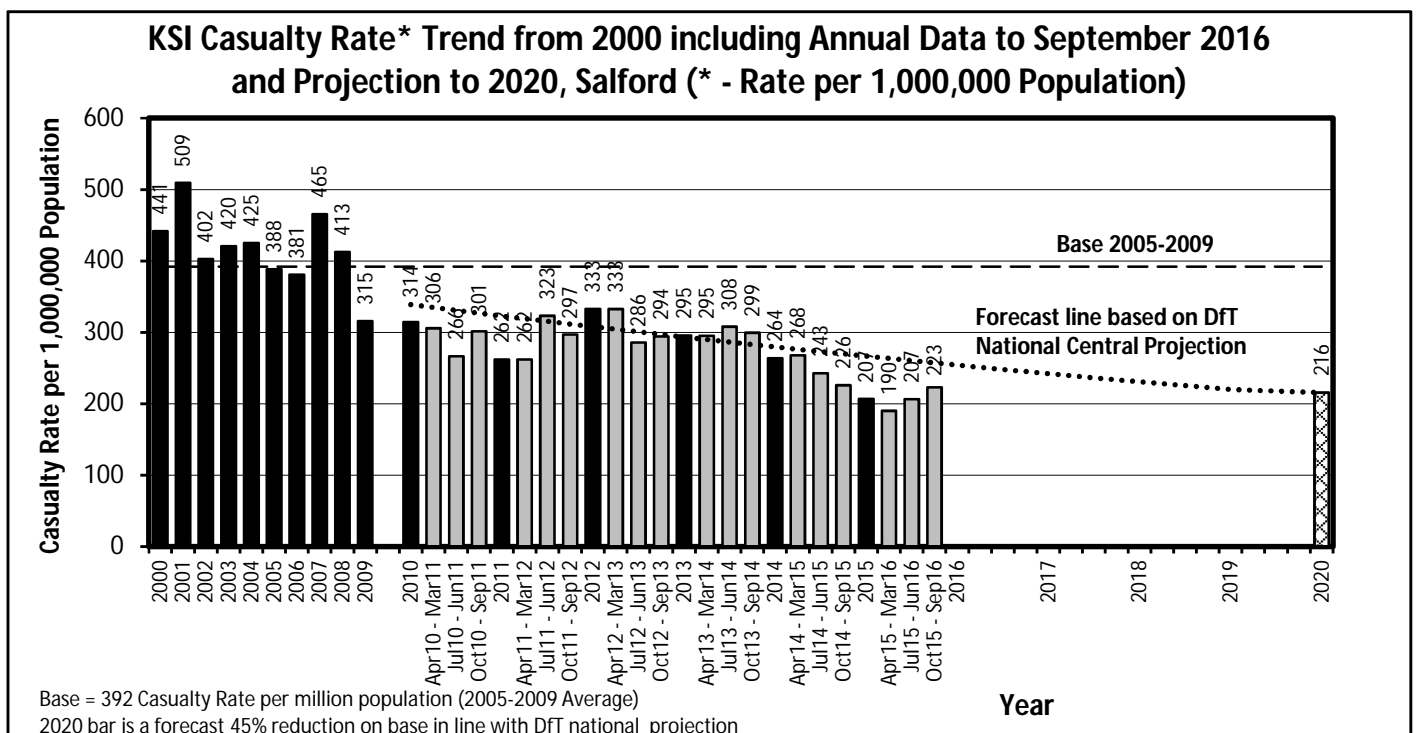
KSI Casualty Rates: Casualty Rate Trend 2000 - September 2016 and Projection to 2020

The table shows Salford KSI casualty rates* from 2000 - September 2016 and forecast casualty reductions based on the DfT National Central Projection as outlined in the Strategic Framework for Road Safety. (*based on ONS population projections).

KSI Casualty Rate Trend 2000 - September 2016 and Projection to 2020				
Year	KSI Casualty Totals**		Index	
	Actual	Projection	Actual	Projection
2000	441			
2001	509			
2002	402			
2003	420			
2004	425			
2005	388			
2006	381			
2007	465			
2008	413			
2009	315			
2005-2009 Baseline	392		100	
2010	314	339	80	86
2011	262	323	67	82
2012	333	308	85	78
2013	295	293	75	75
2014	264	280	67	71
2015	207	267	53	68
Apr 2015-Mar 2016	190	263	48	67
Jul 2015-Jun 2016	207	260	53	66
Oct 2015-Sep 2016	223	257	57	66
2016		254		65
2017		242		62
2018		231		59
2019		220		56
2020		216		55

Notes: ** - KSI rates per 1,000,000 population

Index is based on 2005-2009 average



VISION 2020 FACTSHEET



DATA SOLUTIONS DEPARTMENT

STOCKPORT KSI CASUALTY STATISTICS

Latest 12 Months Data October 2015 to September 2016

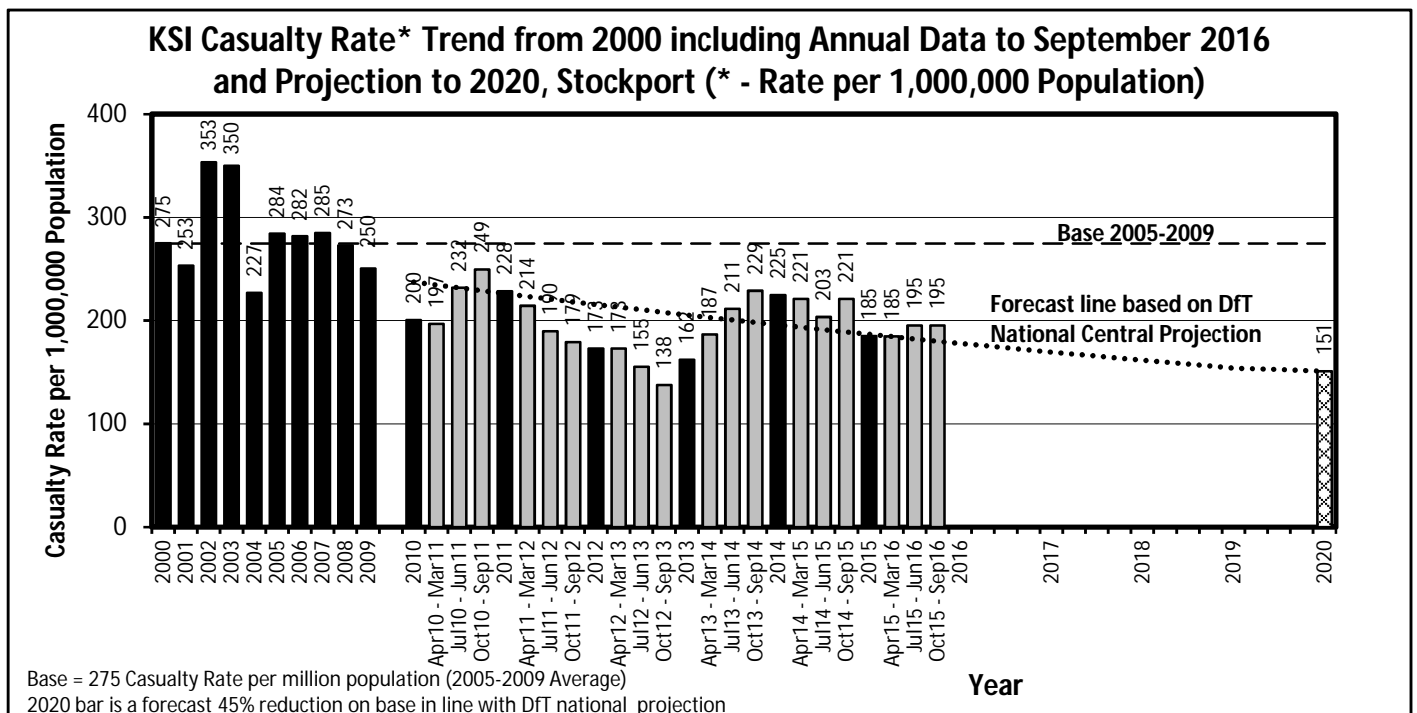
KSI Casualty Rates: Casualty Rate Trend 2000 - September 2016 and Projection to 2020

The table shows Stockport KSI casualty rates* from 2000 - September 2016 and forecast casualty reductions based on the DfT National Central Projection as outlined in the Strategic Framework for Road Safety. (*based on ONS population projections).

KSI Casualty Rate Trend 2000 - September 2016 and Projection to 2020				
Year	KSI Casualty Totals**		Index	
	Actual	Projection	Actual	Projection
2000	275			
2001	253			
2002	353			
2003	350			
2004	227			
2005	284			
2006	282			
2007	285			
2008	273			
2009	250			
2005-2009 Baseline	275		100	
2010	200	237	73	86
2011	228	226	83	82
2012	173	216	63	78
2013	162	205	59	75
2014	225	196	82	71
2015	185	187	67	68
Apr 2015-Mar 2016	185	184	67	67
Jul 2015-Jun 2016	195	182	71	66
Oct 2015-Sep 2016	195	180	71	66
2016		178		65
2017		170		62
2018		162		59
2019		154		56
2020		151		55

Notes: ** - KSI rates per 1,000,000 population

Index is based on 2005-2009 average



VISION 2020 FACTSHEET



DATA SOLUTIONS DEPARTMENT

TAMESIDE KSI CASUALTY STATISTICS

Latest 12 Months Data October 2015 to September 2016

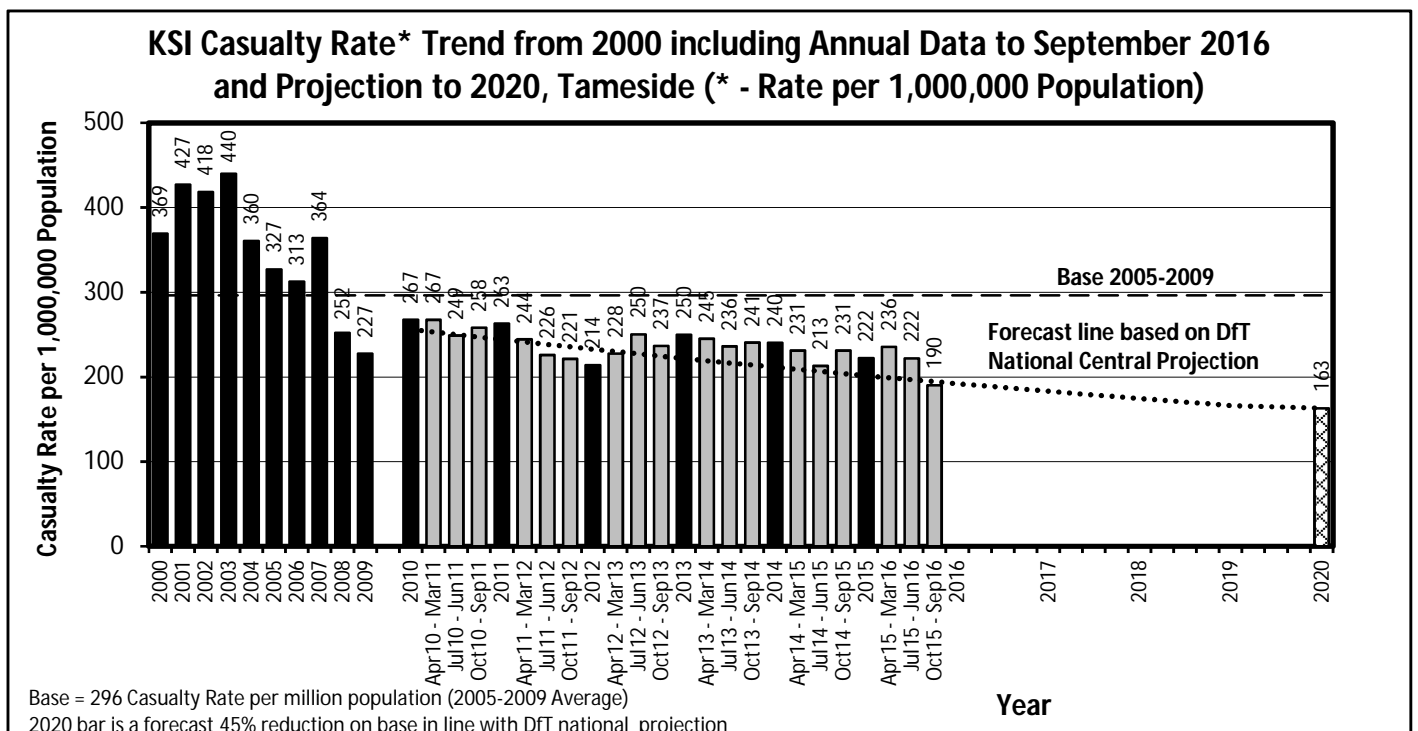
KSI Casualty Rates: Casualty Rate Trend 2000 - September 2016 and Projection to 2020

The table shows Tameside KSI casualty rates* from 2000 - September 2016 and forecast casualty reductions based on the DfT National Central Projection as outlined in the Strategic Framework for Road Safety. (*based on ONS population projections).

KSI Casualty Rate Trend 2000 - September 2016 and Projection to 2020				
Year	KSI Casualty Totals**		Index	
	Actual	Projection	Actual	Projection
2000	369			
2001	427			
2002	418			
2003	440			
2004	360			
2005	327			
2006	313			
2007	364			
2008	252			
2009	227			
2005-2009 Baseline	296		100	
2010	267	256	90	86
2011	263	244	89	82
2012	214	233	72	78
2013	250	222	84	75
2014	240	211	81	71
2015	222	201	75	68
Apr 2015-Mar 2016	236	199	79	67
Jul 2015-Jun 2016	222	197	75	66
Oct 2015-Sep 2016	190	194	64	66
2016		192		65
2017		183		62
2018		174		59
2019		166		56
2020		163		55

Notes: ** - KSI rates per 1,000,000 population

Index is based on 2005-2009 average



VISION 2020 FACTSHEET



DATA SOLUTIONS DEPARTMENT

TRAFFORD KSI CASUALTY STATISTICS

Latest 12 Months Data October 2015 to September 2016

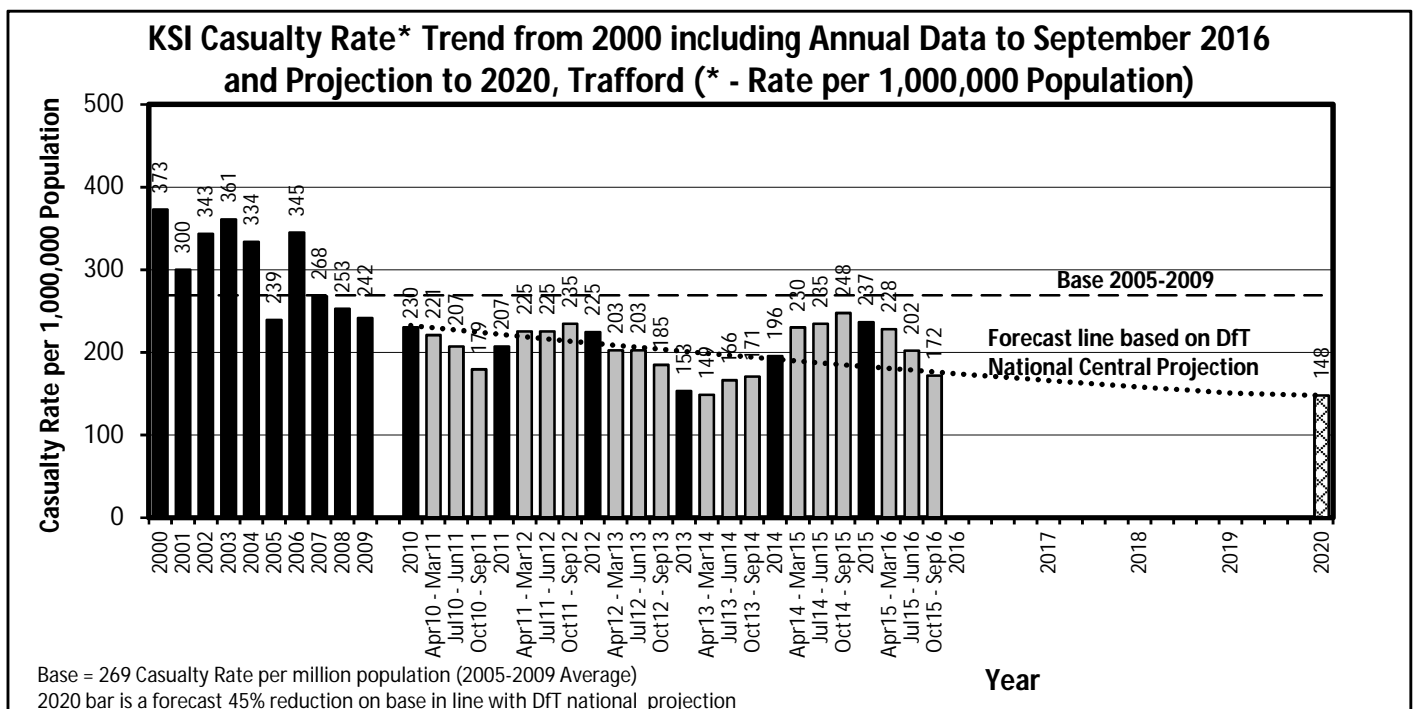
KSI Casualty Rates: Casualty Rate Trend 2000 - September 2016 and Projection to 2020

The table shows Trafford KSI casualty rates* from 2000 - September 2016 and forecast casualty reductions based on the DfT National Central Projection as outlined in the Strategic Framework for Road Safety. (*based on ONS population projections).

KSI Casualty Rate Trend 2000 - September 2016 and Projection to 2020				
Year	KSI Casualty Totals**		Index	
	Actual	Projection	Actual	Projection
2000	373			
2001	300			
2002	343			
2003	361			
2004	334			
2005	239			
2006	345			
2007	268			
2008	253			
2009	242			
2005-2009 Baseline	269		100	
2010	230	232	86	86
2011	207	222	77	82
2012	225	211	83	78
2013	153	201	57	75
2014	196	192	73	71
2015	237	183	88	68
Apr 2015-Mar 2016	228	181	85	67
Jul 2015-Jun 2016	202	179	75	66
Oct 2015-Sep 2016	172	176	64	66
2016		174		65
2017		166		62
2018		158		59
2019		151		56
2020		148		55

Notes: ** - KSI rates per 1,000,000 population

Index is based on 2005-2009 average



VISION 2020 FACTSHEET



DATA SOLUTIONS DEPARTMENT

WIGAN KSI CASUALTY STATISTICS

Latest 12 Months Data October 2015 to September 2016

KSI Casualty Rates: Casualty Rate Trend 2000 - September 2016 and Projection to 2020

The table shows Wigan KSI casualty rates* from 2000 - September 2016 and forecast casualty reductions based on the DfT National Central Projection as outlined in the Strategic Framework for Road Safety. (*based on ONS population projections).

KSI Casualty Rate Trend 2000 - September 2016 and Projection to 2020				
Year	KSI Casualty Totals**		Index	
	Actual	Projection	Actual	Projection
2000	478			
2001	415			
2002	438			
2003	396			
2004	393			
2005	424			
2006	314			
2007	324			
2008	311			
2009	316			
2005-2009 Baseline	338		100	
2010	202	292	60	86
2011	267	278	79	82
2012	233	265	69	78
2013	204	253	60	75
2014	194	241	57	71
2015	227	230	67	68
Apr 2015-Mar 2016	190	227	56	67
Jul 2015-Jun 2016	153	224	45	66
Oct 2015-Sep 2016	165	222	49	66
2016		219		65
2017		209		62
2018		199		59
2019		190		56
2020		186		55

Notes: ** - KSI rates per 1,000,000 population

Index is based on 2005-2009 average

