

# VISION 2020 FACTSHEET



## HIGHWAYS FORECASTING AND ANALYTICAL SERVICES

## GREATER MANCHESTER KSI CASUALTY STATISTICS

Latest 12 Months Data July 2014 to June 2015

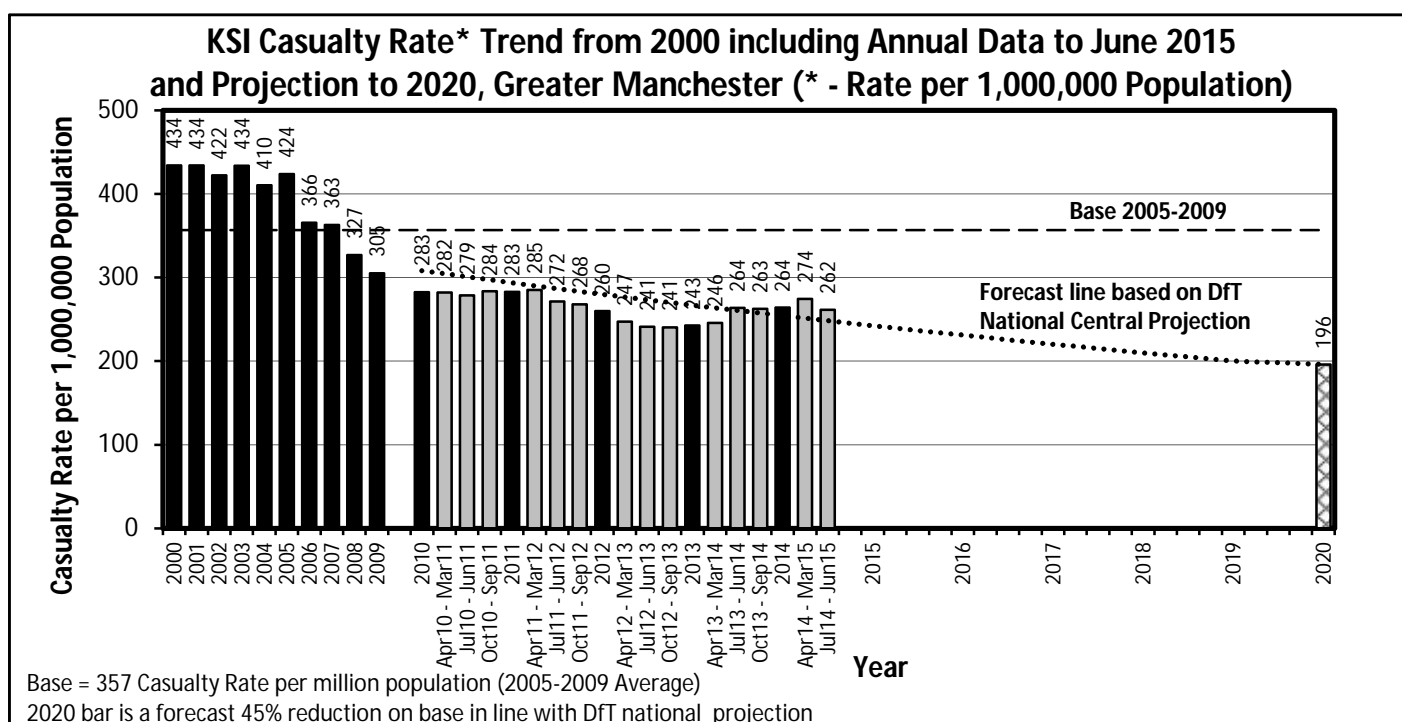
### KSI Casualty Rates: Casualty Rate Trend 2000 - June 2015 and Projection to 2020

The table shows Greater Manchester KSI casualty rates\* from 2000 - June 2015 and forecast casualty reductions based on the DfT National Central Projection as outlined in the Strategic Framework for Road Safety. (\*based on ONS population projections).

KSI Casualty Rate Trend 2000 - June 2015 and Projection to 2020				
Year	KSI Casualty Rates**		Index	
	Actual	Projection	Actual	Projection
2000	434			
2001	434			
2002	422			
2003	434			
2004	410			
2005	424			
2006	366			
2007	363			
2008	327			
2009	305			
2005-2009 Baseline	357		100	
2010	283	308	79	86
2011	283	294	79	82
2012	260	280	73	78
2013	243	267	68	75
2014	264	254	74	71
Apr 2014-Mar 2015	274	251	77	70
Jul 2014-Jun 2015	262	248	73	70
2015		242		68
2016		231		65
2017		220		62
2018		210		59
2019		200		56
2020		196		55

Notes: \*\* - KSI rates per 1,000,000 population

Index is based on 2005-2009 average



<b>Progress Towards KSI Casualty Rate* Reduction Forecast by District</b>			
<b>KSI Casualty Rates* (Progress Towards KPI 11)</b>			
<b>District</b>	<b>Base</b>	<b>Jul 14 to Jun 15**</b>	<b>Vision 2020</b>
Bolton	357	332	196
Bury	349	204	192
Manchester	480	299	264
Oldham	355	299	195
Rochdale	343	316	189
Salford	392	243	216
Stockport	275	200	151
Tameside	296	213	163
Trafford	269	230	148
Wigan	338	235	186
<b>Greater Manchester</b>	<b>357</b>	<b>262</b>	<b>196</b>

<b>Index of Progress Towards KSI Casualty Rate* Reduction Forecast by District</b>			
<b>KSI Casualty Rates* (Progress Towards KPI 11)</b>			
<b>District</b>	<b>Base</b>	<b>Jul 14 to Jun 15**</b>	<b>Vision 2020</b>
Bolton	100	93	55
Bury	100	58	55
Manchester	100	62	55
Oldham	100	84	55
Rochdale	100	92	55
Salford	100	62	55
Stockport	100	73	55
Tameside	100	72	55
Trafford	100	86	55
Wigan	100	69	55
<b>Greater Manchester</b>	<b>100</b>	<b>73</b>	<b>55</b>

Notes: Base = Average 2005-2009 = 100

\* - KSI rates per 1,000,000 resident population

\*\* - Uses figures provided by ONS for the mid-year estimate of population for 2013