

VISION 2020 FACTSHEET



**HIGHWAYS FORECASTING AND
ANALYTICAL SERVICES**

BOLTON KSI CASUALTY STATISTICS

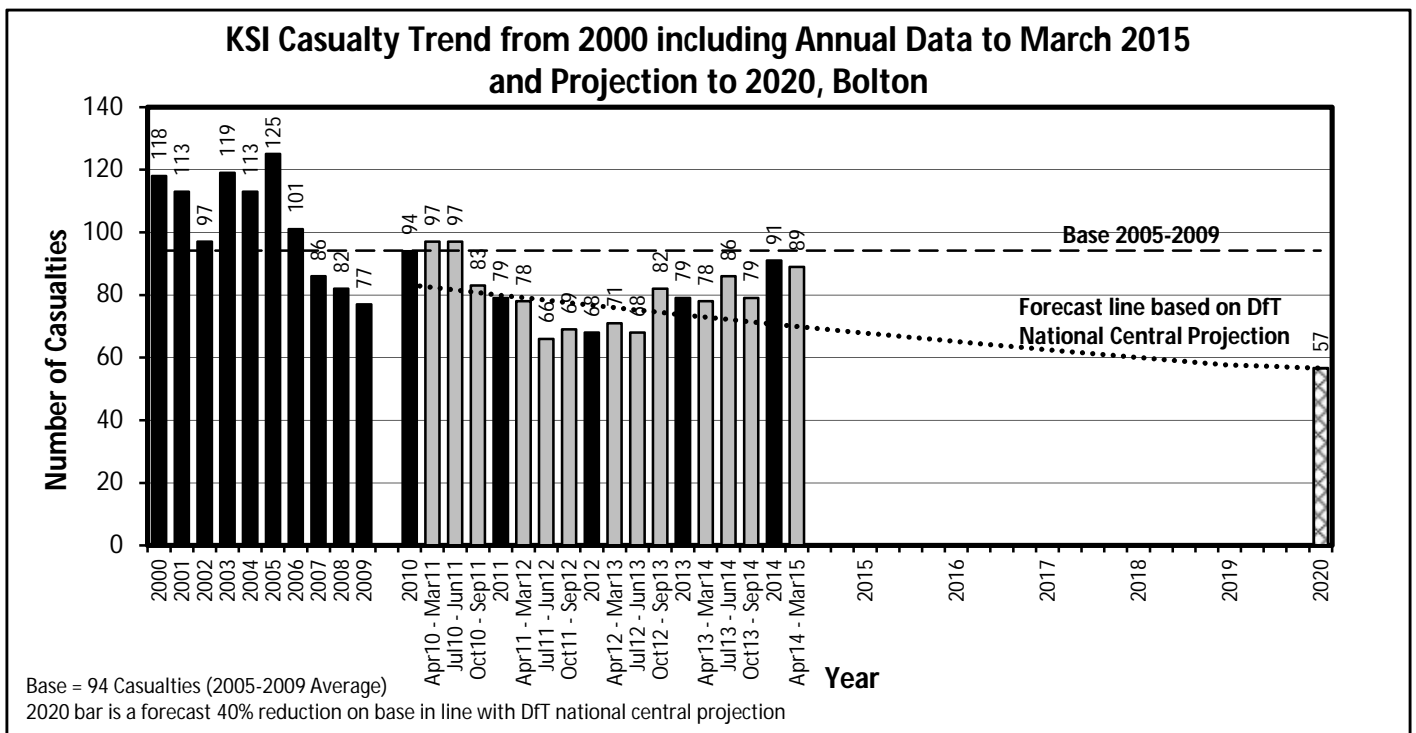
Latest 12 Months Data April 2014 to March 2015

KSI Casualties: Casualty Trend 2000 - March 2015 and Projection to 2020

The table shows Bolton KSI casualties from 2000 - March 2015 and forecast casualty reductions based on the DfT National Central Projection as outlined in the Strategic Framework for Road Safety

KSI Casualty Trend 2000 - March 2015 and Projection to 2020				
Year	KSI Casualty Totals		Index	
	Actual	Projection	Actual	Projection
2000	118			
2001	113			
2002	97			
2003	119			
2004	113			
2005	125			
2006	101			
2007	86			
2008	82			
2009	77			
2005-2009 Baseline	94		100	
2010	94	83	100	88
2011	79	80	84	85
2012	68	77	72	81
2013	79	74	84	78
2014	91	71	97	75
Apr 2014-Mar 2015	89	70	94	74
2015		68		72
2016		65		69
2017		63		66
2018		60		64
2019		58		61
2020		57		60

Note: Index is based on 2005-2009 average



VISION 2020 FACTSHEET



**HIGHWAYS FORECASTING AND
ANALYTICAL SERVICES**

BURY KSI CASUALTY STATISTICS

Latest 12 Months Data April 2014 to March 2015

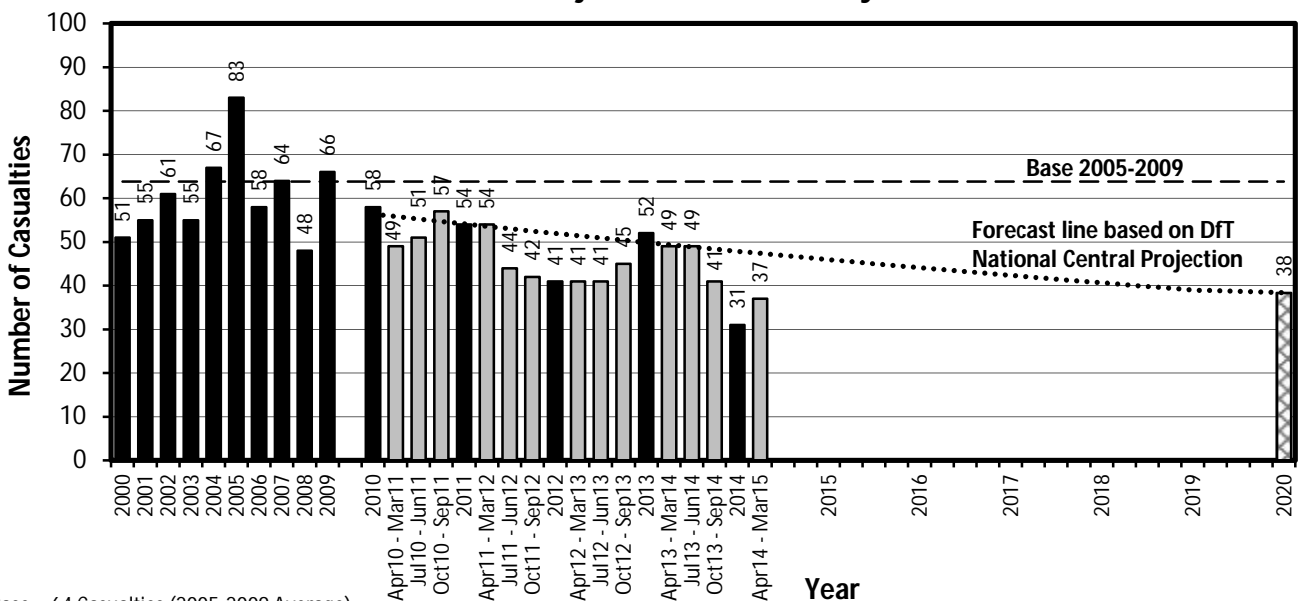
KSI Casualties: Casualty Trend 2000 - March 2015 and Projection to 2020

The table shows Bury KSI casualties from 2000 - March 2015 and forecast casualty reductions based on the DFT National Central Projection as outlined in the Strategic Framework for Road Safety

KSI Casualty Trend 2000 - March 2015 and Projection to 2020				
Year	KSI Casualty Totals		Index	
	Actual	Projection	Actual	Projection
2000	51			
2001	55			
2002	61			
2003	55			
2004	67			
2005	83			
2006	58			
2007	64			
2008	48			
2009	66			
2005-2009 Baseline	64		100	
2010	58	56	91	88
2011	54	54	85	85
2012	41	52	64	81
2013	52	50	82	78
2014	31	48	49	75
Apr 2014-Mar 2015	37	47	58	74
2015		46		72
2016		44		69
2017		42		66
2018		41		64
2019		39		61
2020		38		60

Note: Index is based on 2005-2009 average

**KSI Casualty Trend from 2000 including Annual Data to March 2015
and Projection to 2020, Bury**



Base = 64 Casualties (2005-2009 Average)

2020 bar is a forecast 40% reduction on base in line with DFT national central projection

VISION 2020 FACTSHEET



**HIGHWAYS FORECASTING AND
ANALYTICAL SERVICES**

MANCHESTER KSI CASUALTY STATISTICS

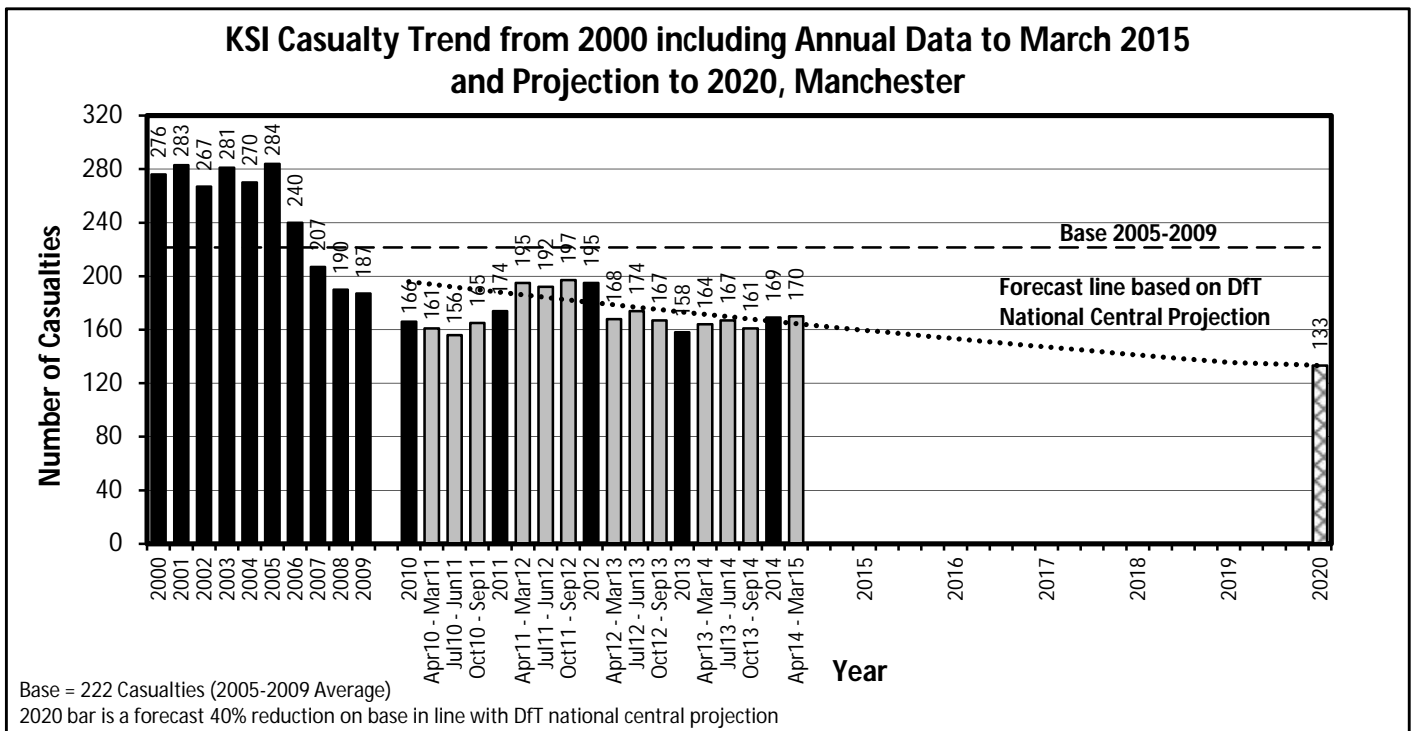
Latest 12 Months Data April 2014 to March 2015

KSI Casualties: Casualty Trend 2000 - March 2015 and Projection to 2020

The table shows Manchester KSI casualties from 2000 - March 2015 and forecast casualty reductions based on the DfT National Central Projection as outlined in the Strategic Framework for Road Safety

KSI Casualty Trend 2000 - March 2015 and Projection to 2020				
Year	KSI Casualty Totals		Index	
	Actual	Projection	Actual	Projection
2000	276			
2001	283			
2002	267			
2003	281			
2004	270			
2005	284			
2006	240			
2007	207			
2008	190			
2009	187			
2005-2009 Baseline	222		100	
2010	166	196	75	88
2011	174	188	79	85
2012	195	180	88	81
2013	158	173	71	78
2014	169	166	76	75
Apr 2014-Mar 2015	170	165	77	74
2015		160		72
2016		153		69
2017		147		66
2018		141		64
2019		136		61
2020		133		60

Note: Index is based on 2005-2009 average



VISION 2020 FACTSHEET



**HIGHWAYS FORECASTING AND
ANALYTICAL SERVICES**

OLDHAM KSI CASUALTY STATISTICS

Latest 12 Months Data April 2014 to March 2015

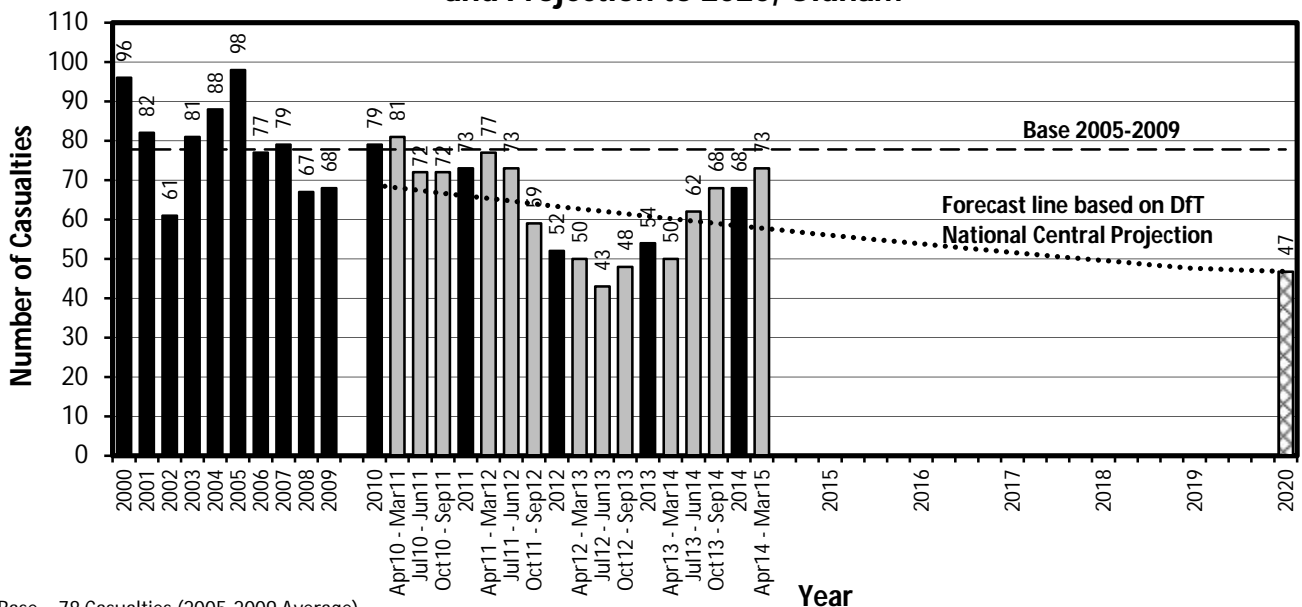
KSI Casualties: Casualty Trend 2000 - March 2015 and Projection to 2020

The table shows Oldham KSI casualties from 2000 - March 2015 and forecast casualty reductions based on the DfT National Central Projection as outlined in the Strategic Framework for Road Safety

KSI Casualty Trend 2000 - March 2015 and Projection to 2020				
Year	KSI Casualty Totals		Index	
	Actual	Projection	Actual	Projection
2000	96			
2001	82			
2002	61			
2003	81			
2004	88			
2005	98			
2006	77			
2007	79			
2008	67			
2009	68			
2005-2009 Baseline	78		100	
2010	79	69	102	88
2011	73	66	94	85
2012	52	63	67	81
2013	54	61	69	78
2014	68	58	87	75
Apr 2014-Mar 2015	73	58	94	74
2015		56		72
2016		54		69
2017		52		66
2018		50		64
2019		48		61
2020		47		60

Note: Index is based on 2005-2009 average

**KSI Casualty Trend from 2000 including Annual Data to March 2015
and Projection to 2020, Oldham**



Base = 78 Casualties (2005-2009 Average)

2020 bar is a forecast 40% reduction on base in line with DfT national central projection

VISION 2020 FACTSHEET



**HIGHWAYS FORECASTING AND
ANALYTICAL SERVICES**

ROCHDALE KSI CASUALTY STATISTICS

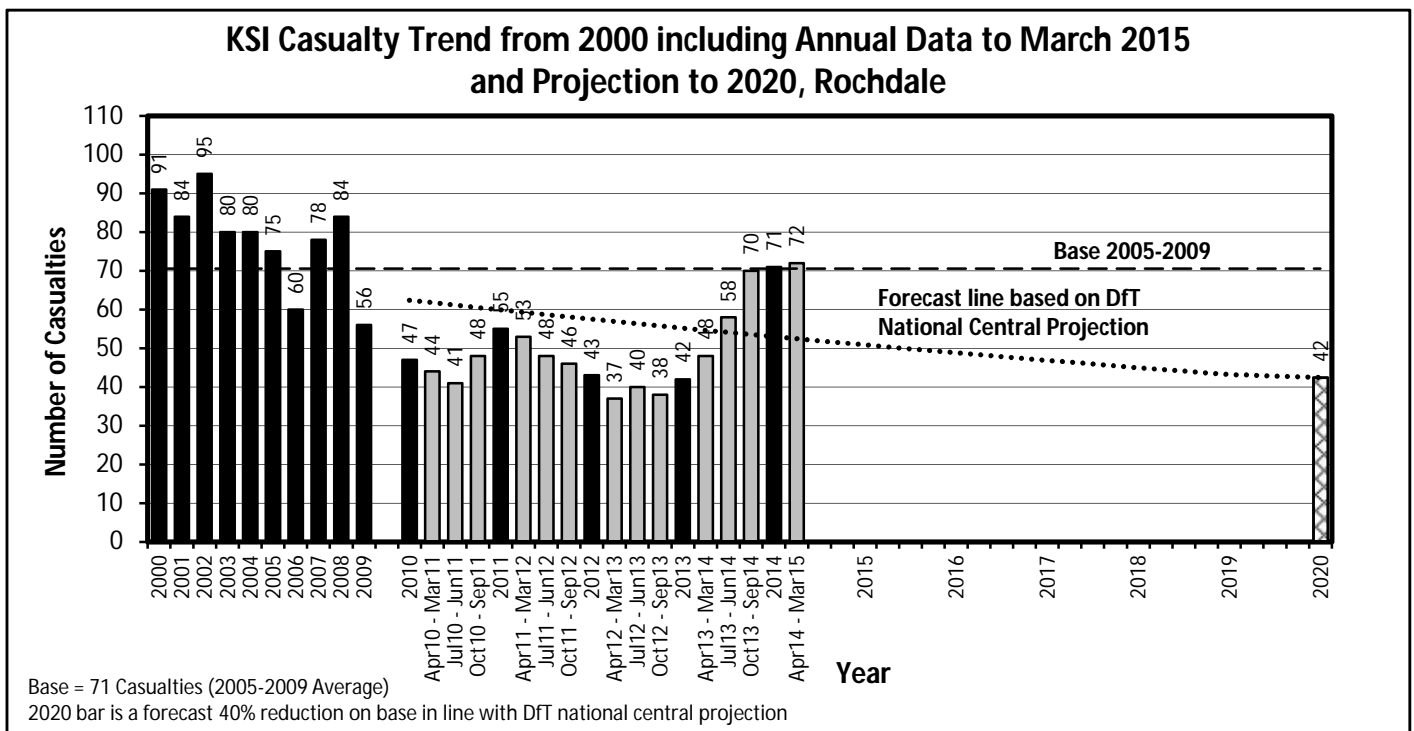
Latest 12 Months Data April 2014 to March 2015

KSI Casualties: Casualty Trend 2000 - March 2015 and Projection to 2020

The table shows Rochdale KSI casualties from 2000 - March 2015 and forecast casualty reductions based on the DfT National Central Projection as outlined in the Strategic Framework for Road Safety

KSI Casualty Trend 2000 - March 2015 and Projection to 2020				
Year	KSI Casualty Totals		Index	
	Actual	Projection	Actual	Projection
2000	91			
2001	84			
2002	95			
2003	80			
2004	80			
2005	75			
2006	60			
2007	78			
2008	84			
2009	56			
2005-2009 Baseline	71		100	
2010	47	62	67	88
2011	55	60	78	85
2012	43	57	61	81
2013	42	55	59	78
2014	71	53	101	75
Apr 2014-Mar 2015	72	52	102	74
2015		51		72
2016		49		69
2017		47		66
2018		45		64
2019		43		61
2020		42		60

Note: Index is based on 2005-2009 average



VISION 2020 FACTSHEET



**HIGHWAYS FORECASTING AND
ANALYTICAL SERVICES**

SALFORD KSI CASUALTY STATISTICS

Latest 12 Months Data April 2014 to March 2015

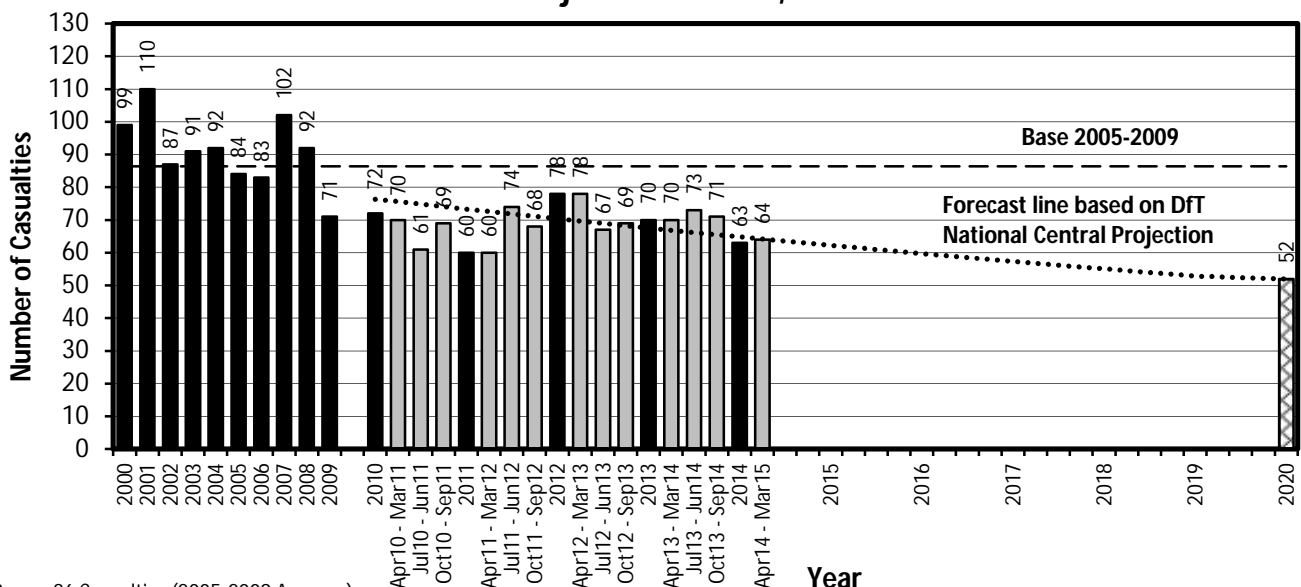
KSI Casualties: Casualty Trend 2000 - March 2015 and Projection to 2020

The table shows Salford KSI casualties from 2000 - March 2015 and forecast casualty reductions based on the DfT National Central Projection as outlined in the Strategic Framework for Road Safety

KSI Casualty Trend 2000 - March 2015 and Projection to 2020				
Year	KSI Casualty Totals		Index	
	Actual	Projection	Actual	Projection
2000	99			
2001	110			
2002	87			
2003	91			
2004	92			
2005	84			
2006	83			
2007	102			
2008	92			
2009	71			
2005-2009 Baseline	86		100	
2010	72	76	83	88
2011	60	73	69	85
2012	78	70	90	81
2013	70	68	81	78
2014	63	65	73	75
Apr 2014-Mar 2015	64	64	74	74
2015		62		72
2016		60		69
2017		57		66
2018		55		64
2019		53		61
2020		52		60

Note: Index is based on 2005-2009 average

**KSI Casualty Trend from 2000 including Annual Data March 2015
and Projection to 2020, Salford**



Base = 86 Casualties (2005-2009 Average)

2020 bar is a forecast 40% reduction on base in line with DfT national central projection

VISION 2020 FACTSHEET



**HIGHWAYS FORECASTING AND
ANALYTICAL SERVICES**

STOCKPORT KSI CASUALTY STATISTICS

Latest 12 Months Data April 2014 to March 2015

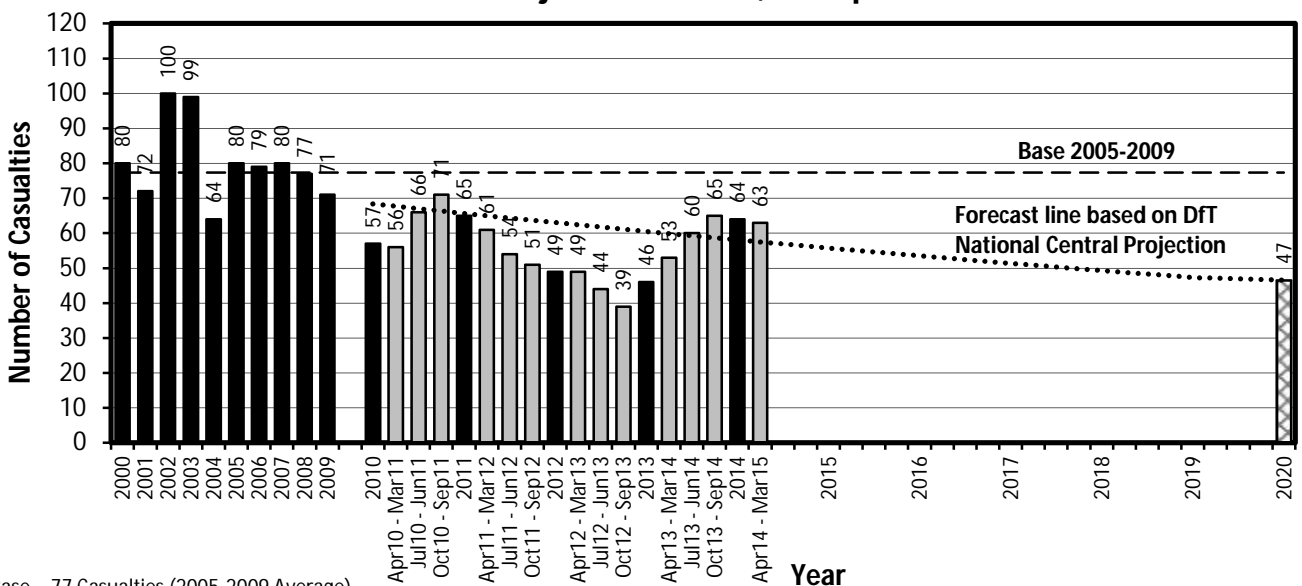
KSI Casualties: Casualty Trend 2000 - March 2015 and Projection to 2020

The table shows Stockport KSI casualties from 2000 - March 2015 and forecast casualty reductions based on the DFT National Central Projection as outlined in the Strategic Framework for Road Safety

KSI Casualty Trend 2000 - March 2015 and Projection to 2020				
Year	KSI Casualty Totals		Index	
	Actual	Projection	Actual	Projection
2000	80			
2001	72			
2002	100			
2003	99			
2004	64			
2005	80			
2006	79			
2007	80			
2008	77			
2009	71			
2005-2009 Baseline	77		100	
2010	57	68	74	88
2011	65	66	84	85
2012	49	63	63	81
2013	46	61	59	78
2014	64	58	83	75
Apr 2014-Mar 2015	63	57	81	74
2015		56		72
2016		54		69
2017		51		66
2018		49		64
2019		47		61
2020		47		60

Note: Index is based on 2005-2009 average

**KSI Casualty Trend from 2000 including Annual Data to March 2015
and Projection to 2020, Stockport**



Base = 77 Casualties (2005-2009 Average)

2020 bar is a forecast 40% reduction on base in line with DFT national central projection

VISION 2020 FACTSHEET



**HIGHWAYS FORECASTING AND
ANALYTICAL SERVICES**

TAMESIDE KSI CASUALTY STATISTICS

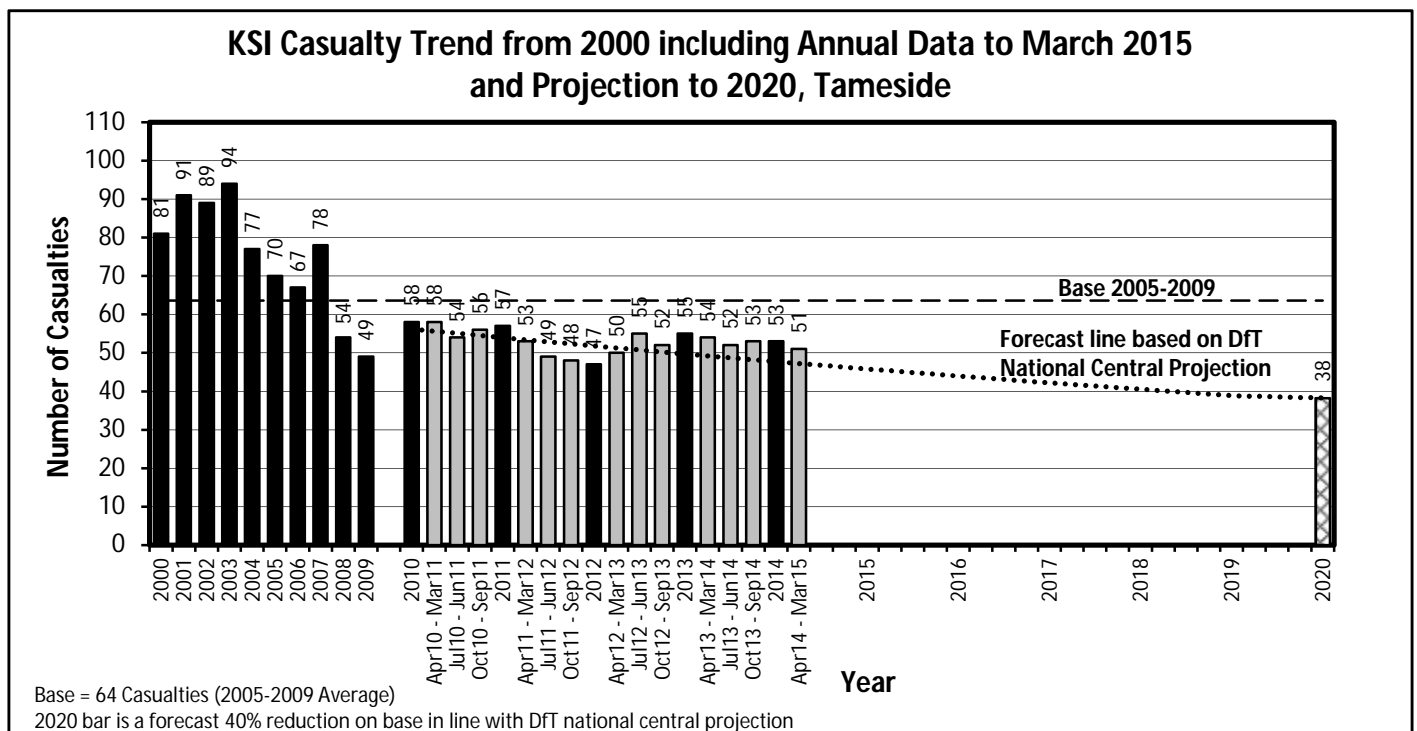
Latest 12 Months Data April 2014 to March 2015

KSI Casualties: Casualty Trend 2000 - March 2015 and Projection to 2020

The table shows Tameside KSI casualties from 2000 - March 2015 and forecast casualty reductions based on the DfT National Central Projection as outlined in the Strategic Framework for Road Safety

KSI Casualty Trend 2000 - March 2015 and Projection to 2020				
Year	KSI Casualty Totals		Index	
	Actual	Projection	Actual	Projection
2000	81			
2001	91			
2002	89			
2003	94			
2004	77			
2005	70			
2006	67			
2007	78			
2008	54			
2009	49			
2005-2009 Baseline	64		100	
2010	58	56	91	88
2011	57	54	90	85
2012	47	52	74	81
2013	55	50	86	78
2014	53	48	83	75
Apr 2014-Mar 2015	51	47	80	74
2015		46		72
2016		44		69
2017		42		66
2018		41		64
2019		39		61
2020		38		60

Note: Index is based on 2005-2009 average



VISION 2020 FACTSHEET



**HIGHWAYS FORECASTING AND
ANALYTICAL SERVICES**

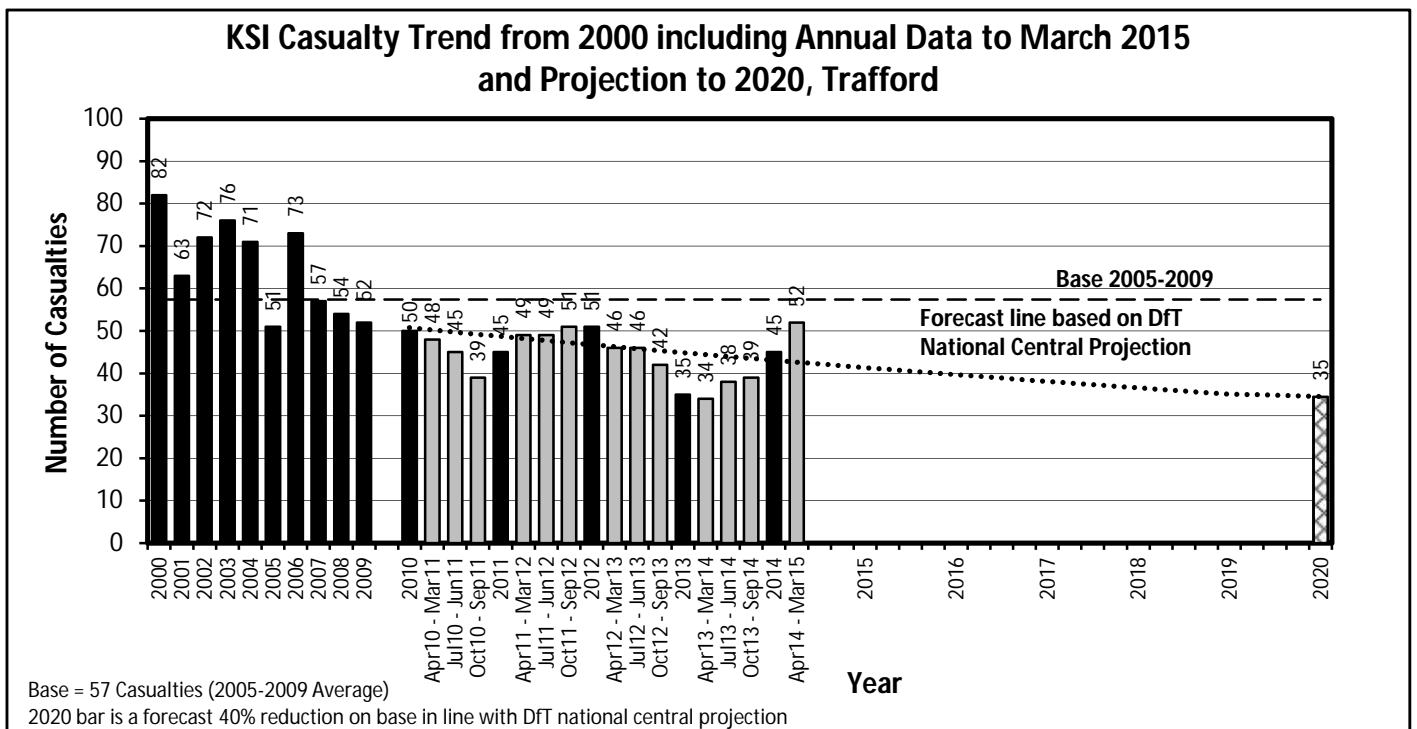
TRAFFORD KSI CASUALTY STATISTICS
Latest 12 Months Data April 2014 to March 2015

KSI Casualties: Casualty Trend 2000 - March 2015 and Projection to 2020

The table shows Trafford KSI casualties from 2000 - March 2015 and forecast casualty reductions based on the DfT National Central Projection as outlined in the Strategic Framework for Road Safety

KSI Casualty Trend 2000 - March 2015 and Projection to 2020				
Year	KSI Casualty Totals		Index	
	Actual	Projection	Actual	Projection
2000	82			
2001	63			
2002	72			
2003	76			
2004	71			
2005	51			
2006	73			
2007	57			
2008	54			
2009	52			
2005-2009 Baseline	57		100	
2010	50	51	87	88
2011	45	49	78	85
2012	51	47	89	81
2013	35	45	61	78
2014	45	43	78	75
Apr 2014-Mar 2015	52	43	91	74
2015		41		72
2016		40		69
2017		38		66
2018		37		64
2019		35		61
2020		35		60

Note: Index is based on 2005-2009 average



VISION 2020 FACTSHEET



**HIGHWAYS FORECASTING AND
ANALYTICAL SERVICES**

WIGAN KSI CASUALTY STATISTICS

Latest 12 Months Data April 2014 to March 2015

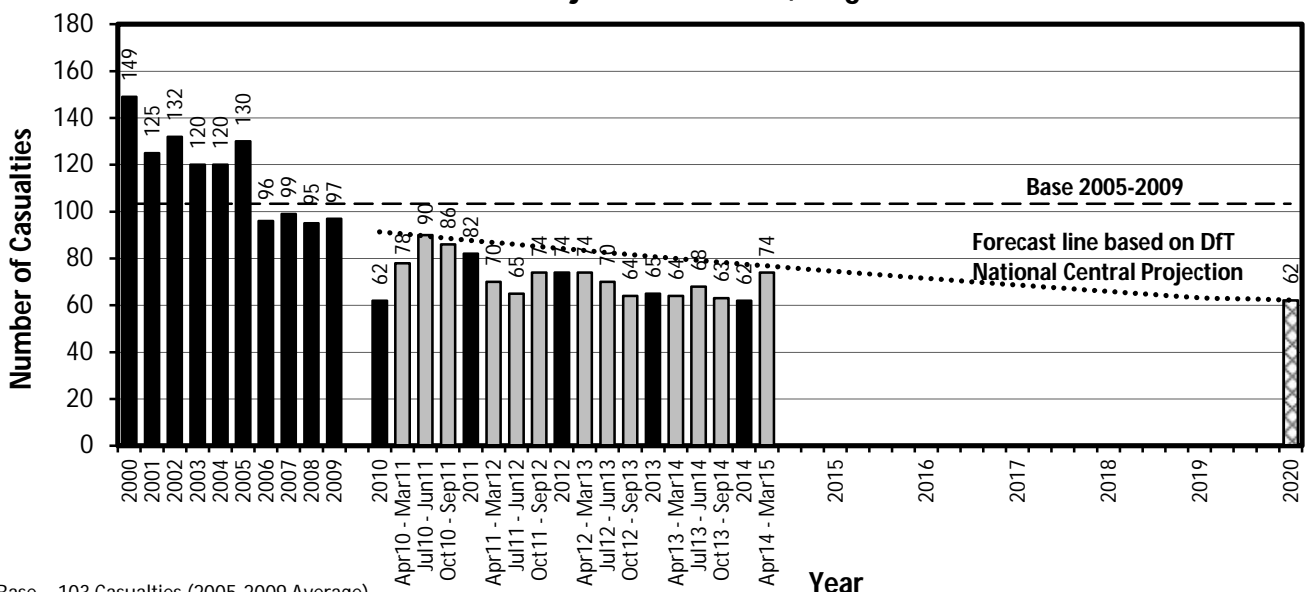
KSI Casualties: Casualty Trend 2000 - March 2015 and Projection to 2020

The table shows Wigan KSI casualties from 2000 - March 2015 and forecast casualty reductions based on the DfT National Central Projection as outlined in the Strategic Framework for Road Safety

KSI Casualty Trend 2000 - March 2015 and Projection to 2020				
Year	KSI Casualty Totals		Index	
	Actual	Projection	Actual	Projection
2000	149			
2001	125			
2002	132			
2003	120			
2004	120			
2005	130			
2006	96			
2007	99			
2008	95			
2009	97			
2005-2009 Baseline	103		100	
2010	62	91	60	88
2011	82	88	79	85
2012	74	84	72	81
2013	65	81	63	78
2014	62	78	60	75
Apr 2014-Mar 2015	74	77	72	74
2015		74		72
2016		71		69
2017		69		66
2018		66		64
2019		63		61
2020		62		60

Note: Index is based on 2005-2009 average

**KSI Casualty Trend from 2000 including Annual Data to March 2015
and Projection to 2020, Wigan**



Base = 103 Casualties (2005-2009 Average)

2020 bar is a forecast 40% reduction on base in line with DfT national central projection