

# VISION 2020 FACTSHEET



**HIGHWAYS FORECASTING AND  
ANALYTICAL SERVICES**

## GREATER MANCHESTER KSI CASUALTY STATISTICS

Latest 12 Months Data July 2013 to June 2014

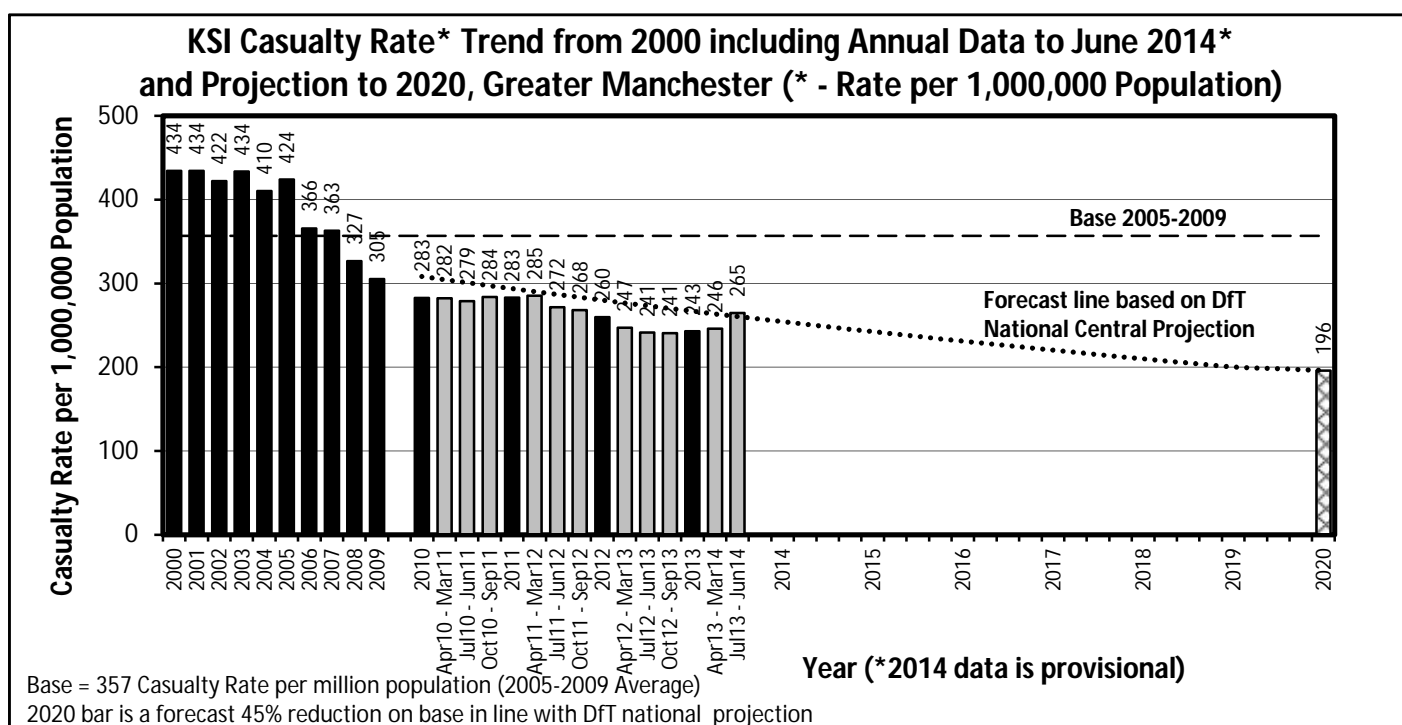
### KSI Casualty Rates: Casualty Rate Trend 2000 - June 2014 and Projection to 2020

The table shows Greater Manchester KSI casualty rates\* from 2000 - June 2014 and forecast casualty reductions based on the DfT National Central Projection as outlined in the Strategic Framework for Road Safety. (\*based on ONS population projections).

KSI Casualty Rate Trend 2000 - June 2014 and Projection to 2020				
Year	KSI Casualty Rates**		Index	
	Actual	Projection	Actual	Projection
2000	434			
2001	434			
2002	422			
2003	434			
2004	410			
2005	424			
2006	366			
2007	363			
2008	327			
2009	305			
2005-2009 Baseline	357		100	
2010	283	308	79	86
2011	283	294	79	82
2012	260	280	73	78
2013	243	267	68	75
Apr 2013-Mar 2014	246	264	69	74
Jul 2013-Jun 2014	265	261	74	73
2014		254		71
2015		242		68
2016		231		65
2017		220		62
2018		210		59
2019		200		56
2020		196		55

Notes: \*\* - KSI rates per 1,000,000 population

Index is based on 2005-2009 average



<b>Progress Towards KSI Casualty Rate* Reduction Forecast by District</b>			
<b>KSI Casualty Rates* (Progress Towards KPI 11)</b>			
<b>District</b>	<b>Base</b>	<b>Jul 13 to Jun 14**</b>	<b>Vision 2020</b>
Bolton	357	308	196
Bury	349	269	192
Manchester	480	327	264
Oldham	355	274	195
Rochdale	343	274	189
Salford	392	312	216
Stockport	275	208	151
Tameside	296	241	163
Trafford	269	166	148
Wigan	338	213	186
<b>Greater Manchester</b>	<b>357</b>	<b>265</b>	<b>196</b>

<b>Index of Progress Towards KSI Casualty Rate* Reduction Forecast by District</b>			
<b>KSI Casualty Rates* (Progress Towards KPI 11)</b>			
<b>District</b>	<b>Base</b>	<b>Jul 13 to Jun 14**</b>	<b>Vision 2020</b>
Bolton	100	86	55
Bury	100	77	55
Manchester	100	68	55
Oldham	100	77	55
Rochdale	100	80	55
Salford	100	80	55
Stockport	100	76	55
Tameside	100	81	55
Trafford	100	62	55
Wigan	100	63	55
<b>Greater Manchester</b>	<b>100</b>	<b>74</b>	<b>55</b>

Notes: Base = Average 2005-2009 = 100 & Year 2014 data so far is provisional

\* - KSI rates per 1,000,000 resident population

\*\* - Uses figures provided by ONS for the mid-year estimate of population for 2012