

# VISION 2020 FACTSHEET



**HIGHWAYS FORECASTING AND  
ANALYTICAL SERVICES**

## BOLTON KSI CASUALTY STATISTICS

Latest 12 Months Data October 2013 to September 2014

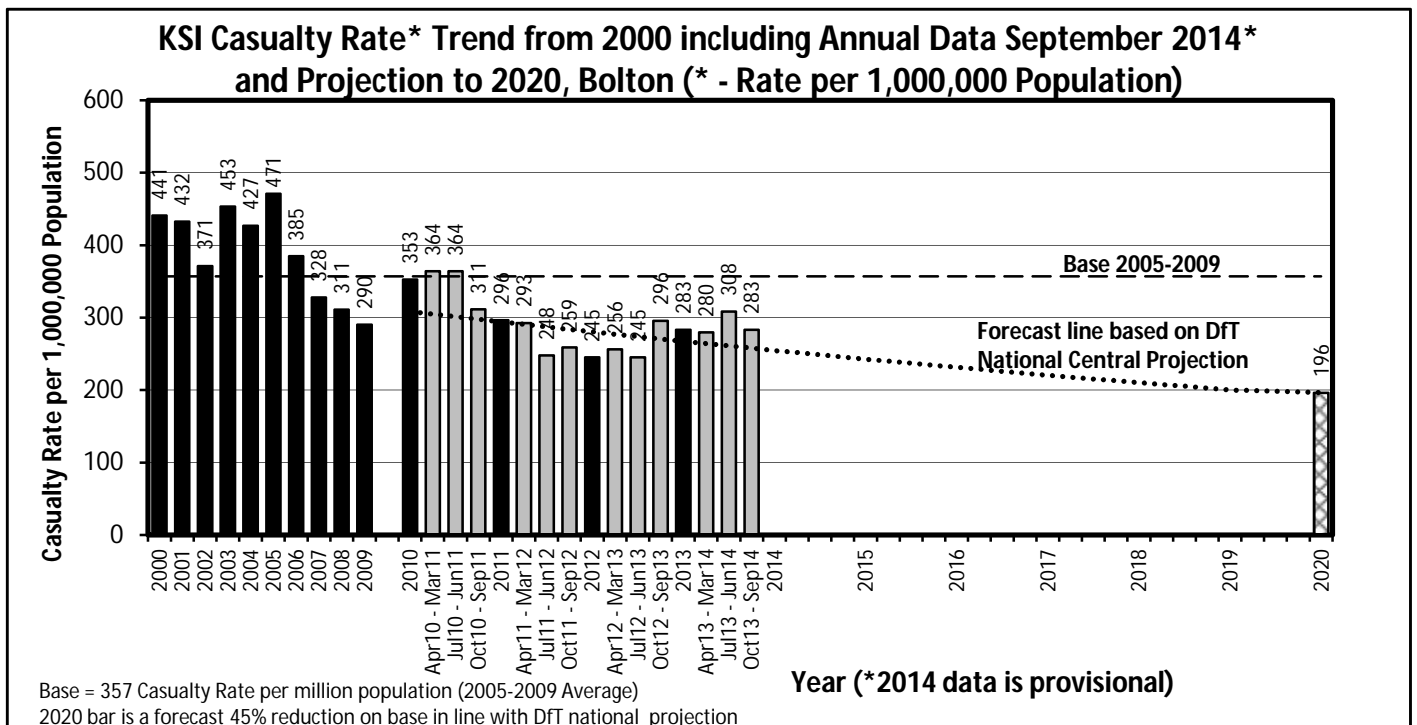
### KSI Casualty Rates: Casualty Rate Trend 2000 - September 2014 and Projection to 2020

The table shows Bolton KSI casualty rates\* from 2000 - September 2014 and forecast casualty reductions based on the DfT National Central Projection as outlined in the Strategic Framework for Road Safety. (\*based on ONS population projections).

KSI Casualty Rate Trend 2000 - September 2014 and Projection to 2020				
Year	KSI Casualty Totals**		Index	
	Actual	Projection	Actual	Projection
2000	441			
2001	432			
2002	371			
2003	453			
2004	427			
2005	471			
2006	385			
2007	328			
2008	311			
2009	290			
2005-2009 Baseline	357		100	
2010	353	309	99	86
2011	296	294	83	82
2012	245	280	69	78
2013	283	267	79	75
<i>Apr 2013-Mar 2014</i>	280	264	78	74
<i>Jul 2013-Jun 2014</i>	308	261	86	73
<i>Oct 2013-Sep 2014</i>	283	258	79	72
2014		255		71
2015		243		68
2016		231		65
2017		221		62
2018		210		59
2019		200		56
2020		196		55

Notes: \*\* - KSI rates per 1,000,000 population

Index is based on 2005-2009 average



# VISION 2020 FACTSHEET



**HIGHWAYS FORECASTING AND  
ANALYTICAL SERVICES**

## BURY KSI CASUALTY STATISTICS

Latest 12 Months Data October 2013 to September 2014

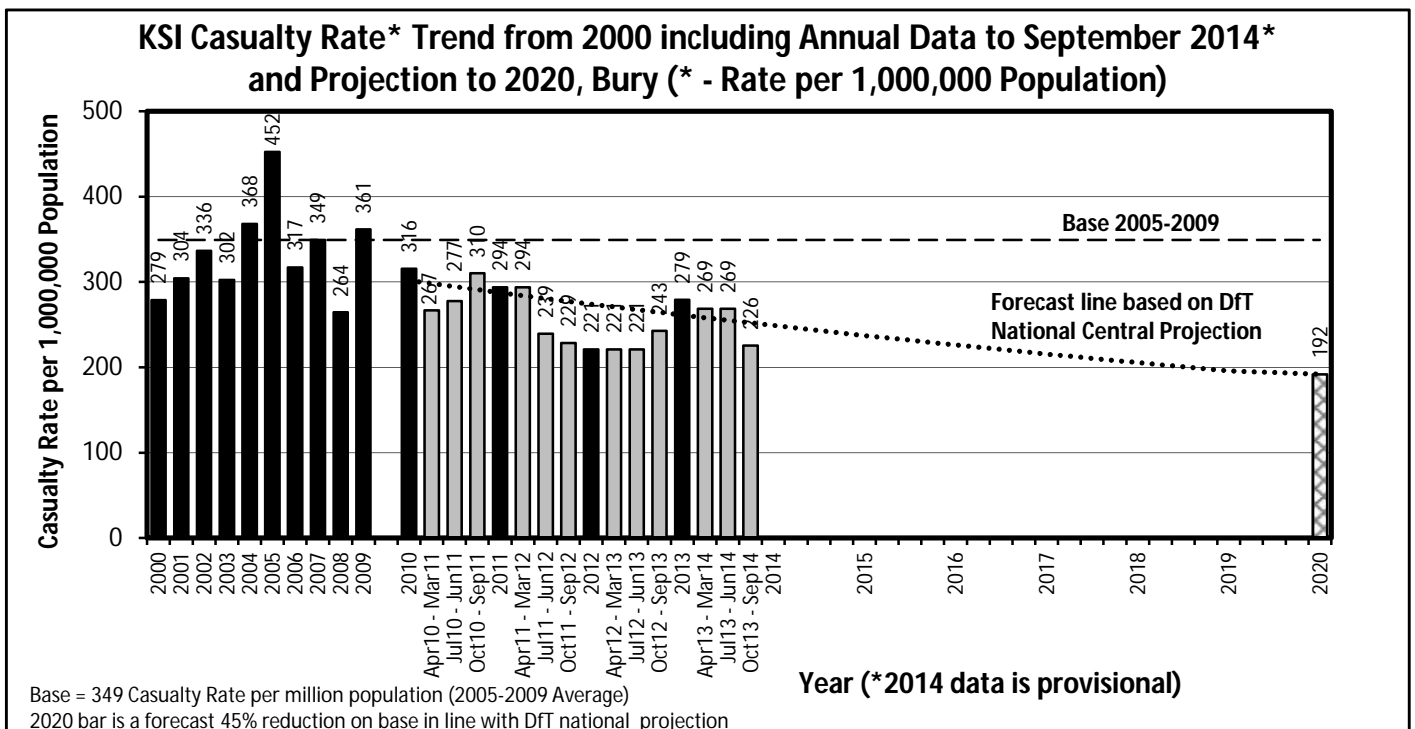
### KSI Casualty Rates: Casualty Rate Trend 2000 - September 2014 and Projection to 2020

The table shows Bury KSI casualty rates\* from 2000 - September 2014 and forecast casualty reductions based on the DFT National Central Projection as outlined in the Strategic Framework for Road Safety. (\*based on ONS population projections).

KSI Casualty Rate Trend 2000 - September 2014 and Projection to 2020				
Year	KSI Casualty Totals**		Index	
	Actual	Projection	Actual	Projection
2000	279			
2001	304			
2002	336			
2003	302			
2004	368			
2005	452			
2006	317			
2007	349			
2008	264			
2009	361			
2005-2009 Baseline	349		100	
2010	316	302	90	86
2011	294	287	84	82
2012	221	274	63	78
2013	279	261	80	75
Apr 2013-Mar 2014	269	258	77	74
Jul 2013-Jun 2014	269	255	77	73
Oct 2013-Sep 2014	226	252	65	72
2014		249		71
2015		237		68
2016		226		65
2017		216		62
2018		205		59
2019		196		56
2020		192		55

Notes: \*\* - KSI rates per 1,000,000 population

Index is based on 2005-2009 average



# VISION 2020 FACTSHEET



## HIGHWAYS FORECASTING AND ANALYTICAL SERVICES

### MANCHESTER KSI CASUALTY STATISTICS

Latest 12 Months Data October 2013 to September 2014

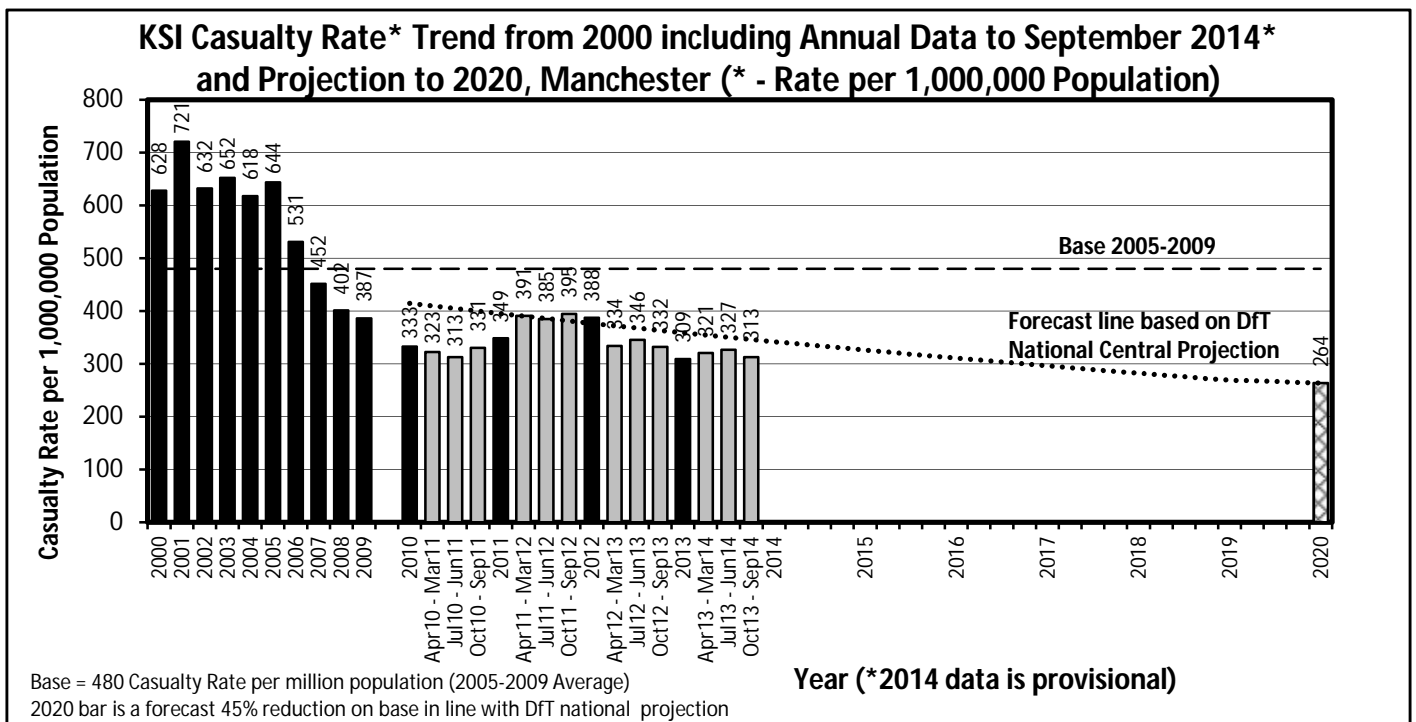
#### KSI Casualty Rates: Casualty Rate Trend 2000 - September 2014 and Projection to 2020

The table shows Manchester KSI casualty rates\* from 2000 - September 2014 and forecast casualty reductions based on the DfT National Central Projection as outlined in the Strategic Framework for Road Safety. (\*based on ONS population projections).

KSI Casualty Rate Trend 2000 - September 2014 and Projection to 2020				
Year	KSI Casualty Totals**		Index	
	Actual	Projection	Actual	Projection
2000	628			
2001	721			
2002	632			
2003	652			
2004	618			
2005	644			
2006	531			
2007	452			
2008	402			
2009	387			
2005-2009 Baseline	480		100	
2010	333	415	69	86
2011	349	395	73	82
2012	388	377	81	78
2013	309	359	64	75
Apr 2013-Mar 2014	321	355	67	74
Jul 2013-Jun 2014	327	351	68	73
Oct 2013-Sep 2014	313	347	65	72
2014		342		71
2015		326		68
2016		311		65
2017		296		62
2018		283		59
2019		269		56
2020		264		55

Notes: \*\* - KSI rates per 1,000,000 population

Index is based on 2005-2009 average



# VISION 2020 FACTSHEET



**HIGHWAYS FORECASTING AND  
ANALYTICAL SERVICES**

## OLDHAM KSI CASUALTY STATISTICS

Latest 12 Months Data October 2013 to September 2014

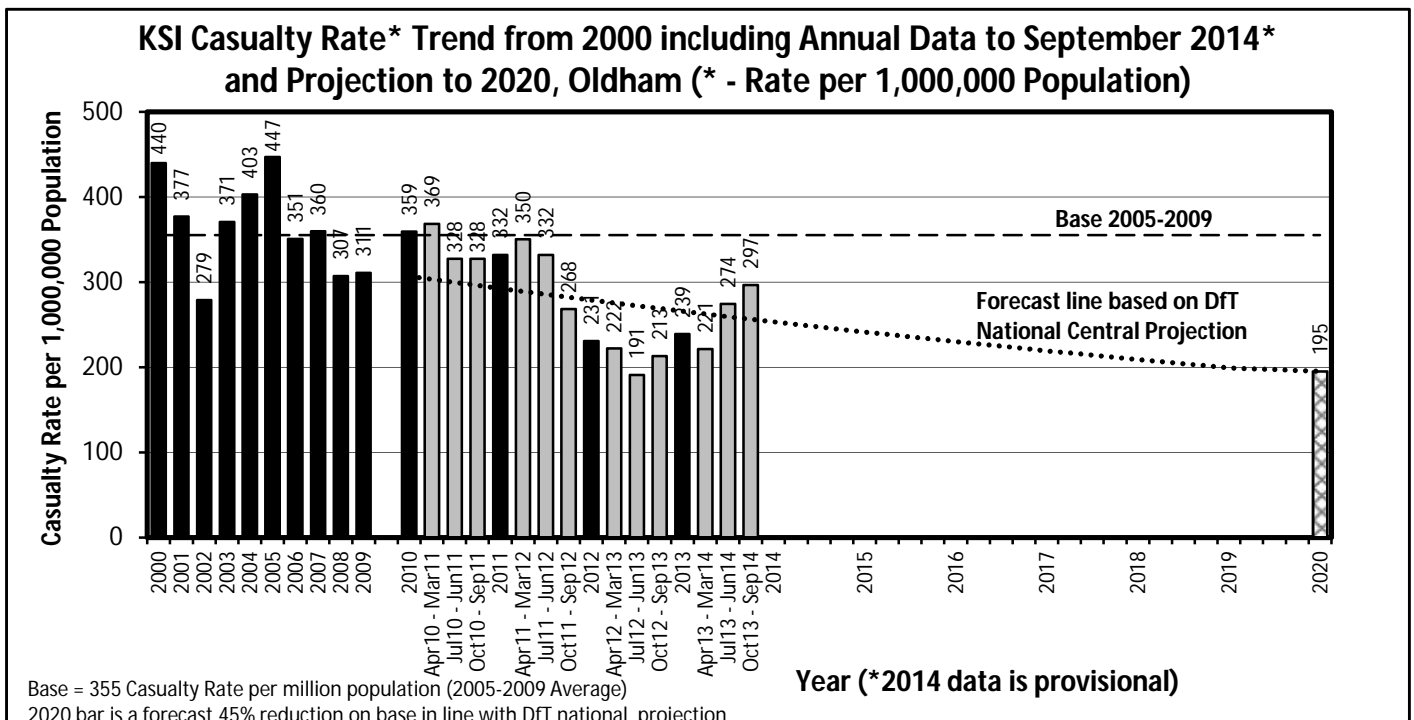
### KSI Casualty Rates: Casualty Rate Trend 2000 - September 2014 and Projection to 2020

The table shows Oldham KSI casualty rates\* from 2000 - September 2014 and forecast casualty reductions based on the DFT National Central Projection as outlined in the Strategic Framework for Road Safety. (\*based on ONS population projections).

KSI Casualty Rate Trend 2000 - September 2014 and Projection to 2020				
Year	KSI Casualty Totals**		Index	
	Actual	Projection	Actual	Projection
2000	440			
2001	377			
2002	279			
2003	371			
2004	403			
2005	447			
2006	351			
2007	360			
2008	307			
2009	311			
2005-2009 Baseline	355		100	
2010	359	307	101	86
2011	332	292	94	82
2012	231	279	65	78
2013	239	266	67	75
Apr 2013-Mar 2014	221	263	62	74
Jul 2013-Jun 2014	274	259	77	73
Oct 2013-Sep 2014	297	256	84	72
2014		253		71
2015		241		68
2016		230		65
2017		219		62
2018		209		59
2019		199		56
2020		195		55

Notes: \*\* - KSI rates per 1,000,000 population

Index is based on 2005-2009 average



# VISION 2020 FACTSHEET



**HIGHWAYS FORECASTING AND  
ANALYTICAL SERVICES**

## ROCHDALE KSI CASUALTY STATISTICS

Latest 12 Months Data October 2013 to September 2014

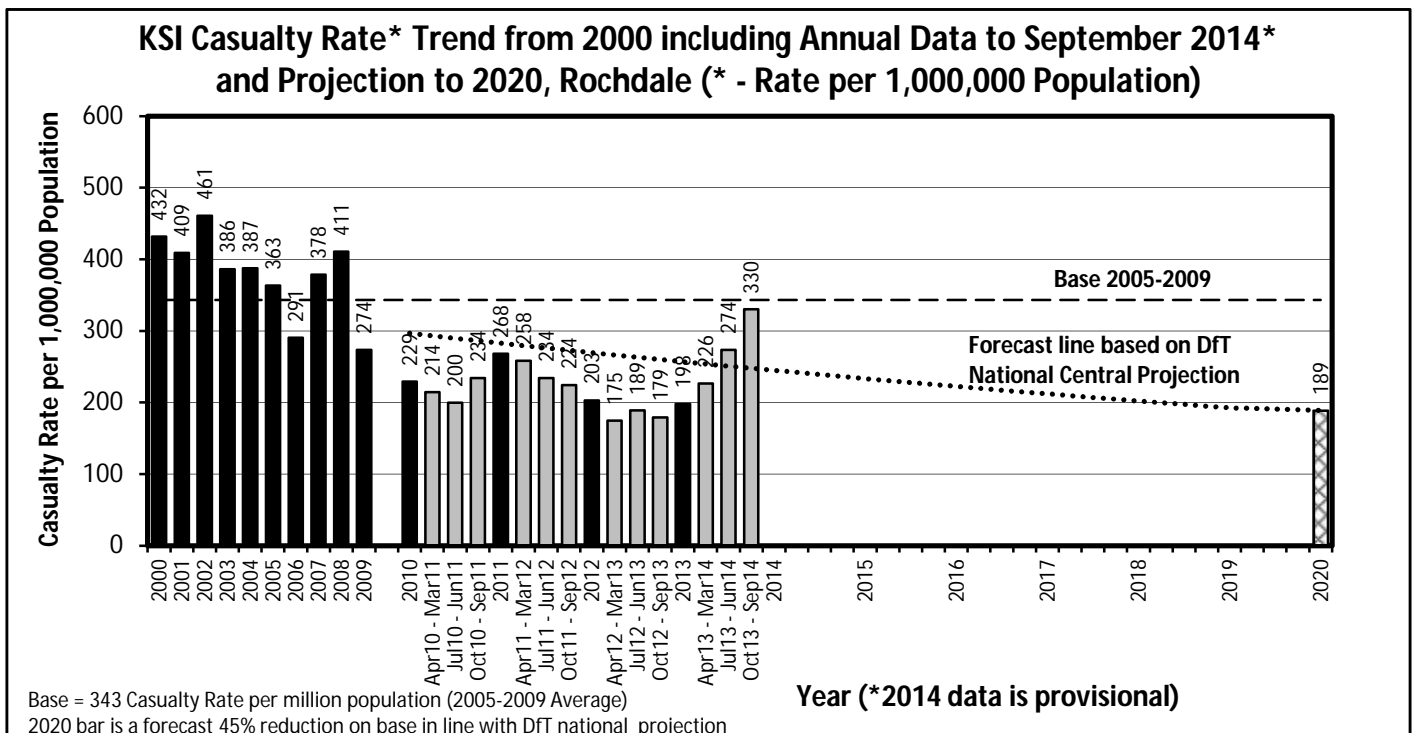
### KSI Casualty Rates: Casualty Rate Trend 2000 - September 2014 and Projection to 2020

The table shows Rochdale KSI casualty rates\* from 2000 - September 2014 and forecast casualty reductions based on the DfT National Central Projection as outlined in the Strategic Framework for Road Safety. (\*based on ONS population projections).

KSI Casualty Rate Trend 2000 - September 2014 and Projection to 2020				
Year	KSI Casualty Totals**		Index	
	Actual	Projection	Actual	Projection
2000	432			
2001	409			
2002	461			
2003	386			
2004	387			
2005	363			
2006	291			
2007	378			
2008	411			
2009	274			
2005-2009 Baseline	343		100	
2010	229	297	67	86
2011	268	283	78	82
2012	203	270	59	78
2013	198	257	58	75
Apr 2013-Mar 2014	226	254	66	74
Jul 2013-Jun 2014	274	251	80	73
Oct 2013-Sep 2014	330	248	96	72
2014		245		71
2015		233		68
2016		222		65
2017		212		62
2018		202		59
2019		193		56
2020		189		55

Notes: \*\* - KSI rates per 1,000,000 population

Index is based on 2005-2009 average



# VISION 2020 FACTSHEET



**HIGHWAYS FORECASTING AND  
ANALYTICAL SERVICES**

## SALFORD KSI CASUALTY STATISTICS

Latest 12 Months Data October 2013 to September 2014

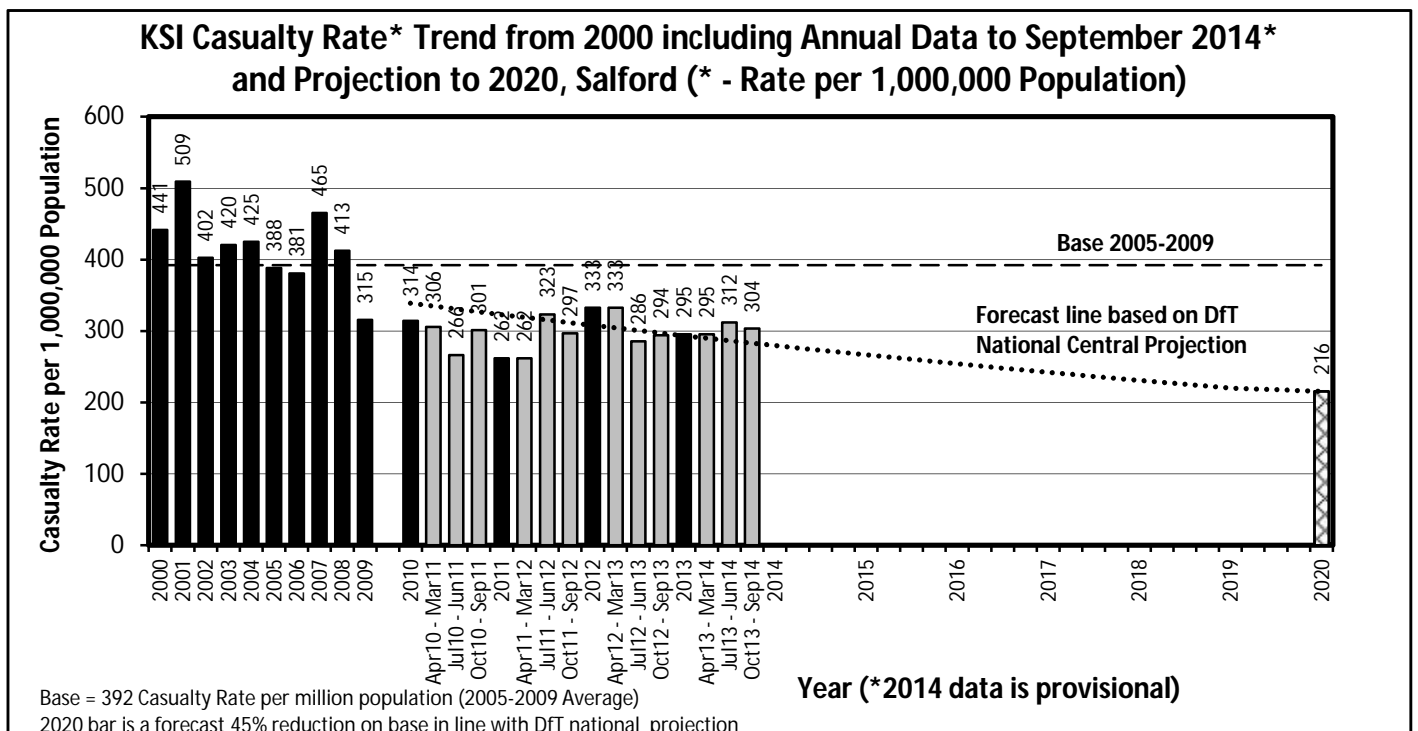
### KSI Casualty Rates: Casualty Rate Trend 2000 - September 2014 and Projection to 2020

The table shows Salford KSI casualty rates\* from 2000 - September 2014 and forecast casualty reductions based on the DfT National Central Projection as outlined in the Strategic Framework for Road Safety. (\*based on ONS population projections).

KSI Casualty Rate Trend 2000 - September 2014 and Projection to 2020				
Year	KSI Casualty Totals**		Index	
	Actual	Projection	Actual	Projection
2000	441			
2001	509			
2002	402			
2003	420			
2004	425			
2005	388			
2006	381			
2007	465			
2008	413			
2009	315			
2005-2009 Baseline	392		100	
2010	314	339	80	86
2011	262	323	67	82
2012	333	308	85	78
2013	295	293	75	75
Apr 2013-Mar 2014	295	290	75	74
Jul 2013-Jun 2014	312	287	80	73
Oct 2013-Sep 2014	304	283	77	72
2014		280		71
2015		267		68
2016		254		65
2017		242		62
2018		231		59
2019		220		56
2020		216		55

Notes: \*\* - KSI rates per 1,000,000 population

Index is based on 2005-2009 average



# VISION 2020 FACTSHEET



**HIGHWAYS FORECASTING AND  
ANALYTICAL SERVICES**

## STOCKPORT KSI CASUALTY STATISTICS

Latest 12 Months Data October 2013 to September 2014

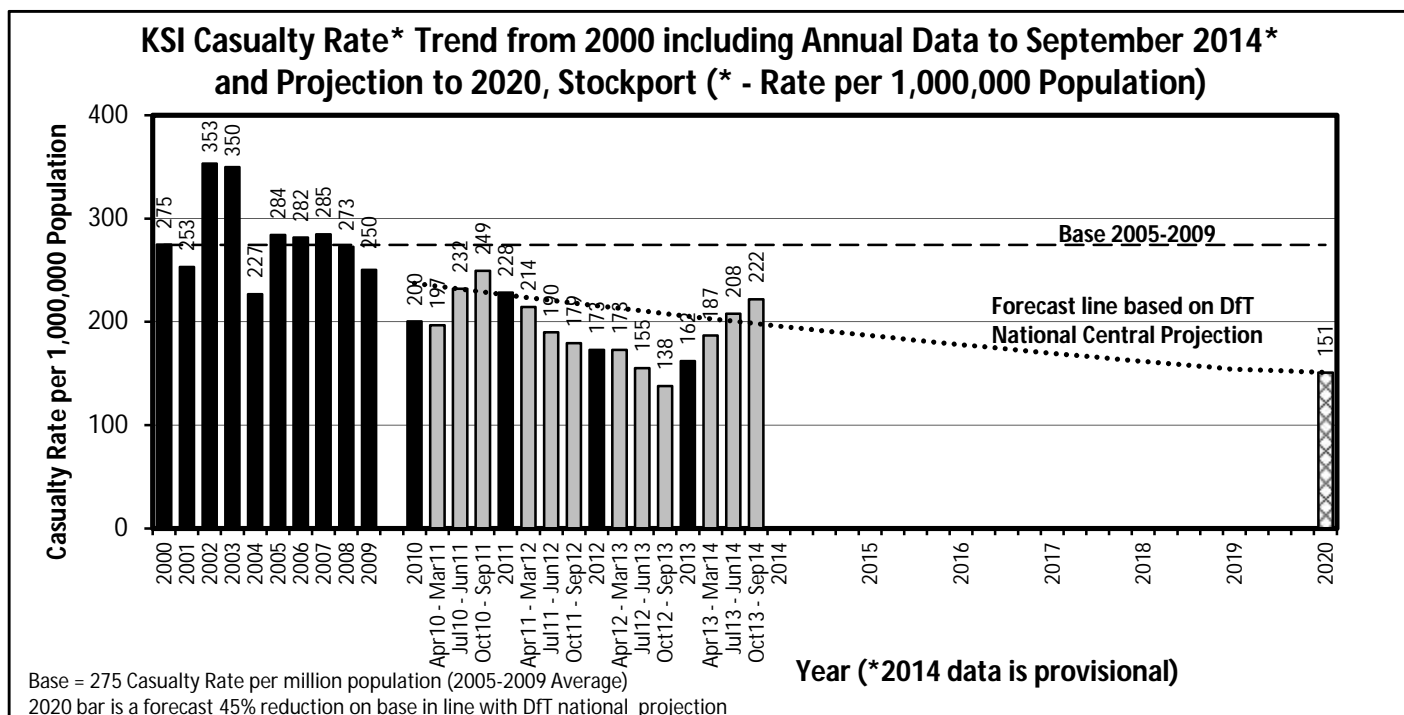
### KSI Casualty Rates: Casualty Rate Trend 2000 - September 2014 and Projection to 2020

The table shows Stockport KSI casualty rates\* from 2000 - September 2014 and forecast casualty reductions based on the DfT National Central Projection as outlined in the Strategic Framework for Road Safety. (\*based on ONS population projections).

KSI Casualty Rate Trend 2000 - September 2014 and Projection to 2020				
Year	KSI Casualty Totals**		Index	
	Actual	Projection	Actual	Projection
2000	275			
2001	253			
2002	353			
2003	350			
2004	227			
2005	284			
2006	282			
2007	285			
2008	273			
2009	250			
2005-2009 Baseline	275		100	
2010	200	237	73	86
2011	228	226	83	82
2012	173	216	63	78
2013	162	205	59	75
Apr 2013-Mar 2014	187	203	68	74
Jul 2013-Jun 2014	208	201	76	73
Oct 2013-Sep 2014	222	198	81	72
2014		196		71
2015		187		68
2016		178		65
2017		170		62
2018		162		59
2019		154		56
2020		151		55

Notes: \*\* - KSI rates per 1,000,000 population

Index is based on 2005-2009 average



# VISION 2020 FACTSHEET



**HIGHWAYS FORECASTING AND  
ANALYTICAL SERVICES**

## TAMESIDE KSI CASUALTY STATISTICS

Latest 12 Months Data October 2013 to September 2014

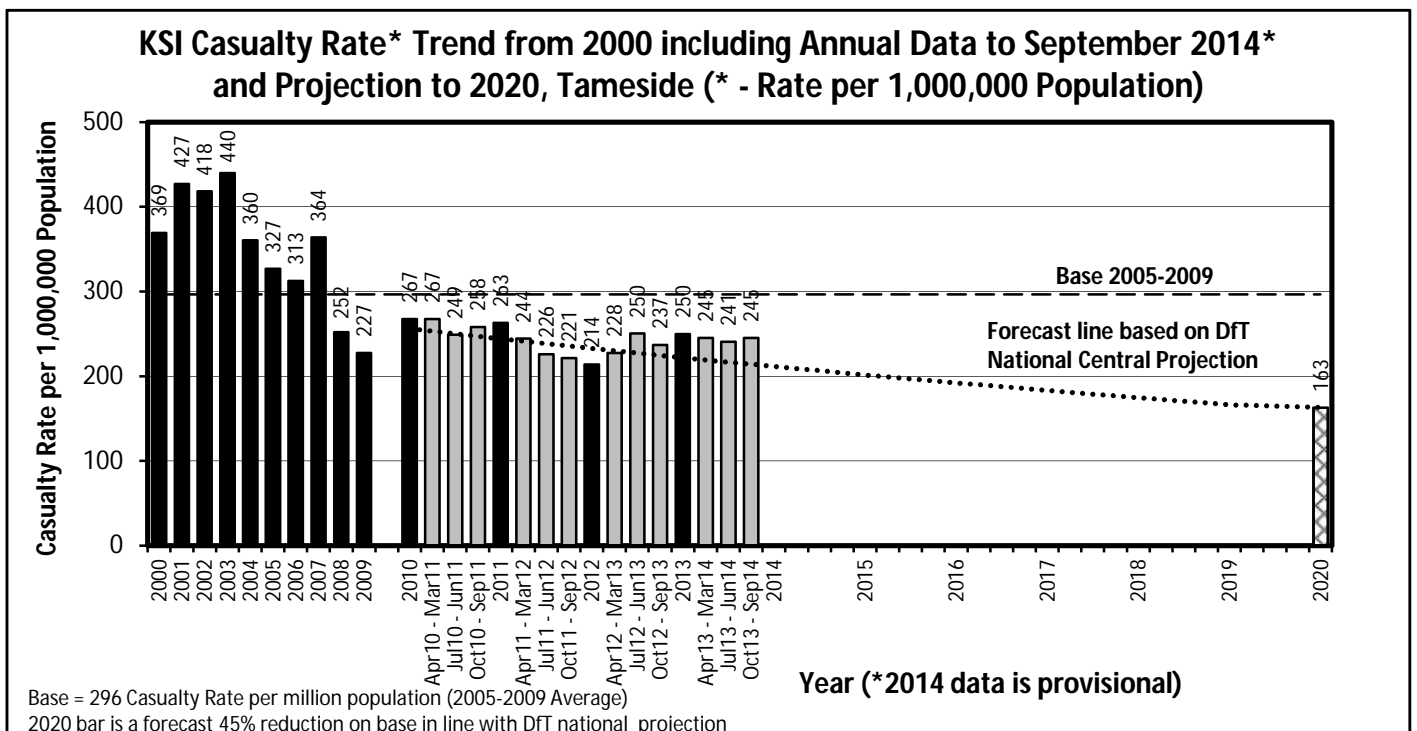
### KSI Casualty Rates: Casualty Rate Trend 2000 - September 2014 and Projection to 2020

The table shows Tameside KSI casualty rates\* from 2000 - September 2014 and forecast casualty reductions based on the DfT National Central Projection as outlined in the Strategic Framework for Road Safety. (\*based on ONS population projections).

KSI Casualty Rate Trend 2000 - September 2014 and Projection to 2020				
Year	KSI Casualty Totals**		Index	
	Actual	Projection	Actual	Projection
2000	369			
2001	427			
2002	418			
2003	440			
2004	360			
2005	327			
2006	313			
2007	364			
2008	252			
2009	227			
2005-2009 Baseline	296		100	
2010	267	256	90	86
2011	263	244	89	82
2012	214	233	72	78
2013	250	222	84	75
Apr 2013-Mar 2014	245	219	83	74
Jul 2013-Jun 2014	241	217	81	73
Oct 2013-Sep 2014	245	214	83	72
2014		211		71
2015		201		68
2016		192		65
2017		183		62
2018		174		59
2019		166		56
2020		163		55

Notes: \*\* - KSI rates per 1,000,000 population

Index is based on 2005-2009 average





# VISION 2020 FACTSHEET



**HIGHWAYS FORECASTING AND  
ANALYTICAL SERVICES**

## TRAFFORD KSI CASUALTY STATISTICS

Latest 12 Months Data October 2013 to September 2014

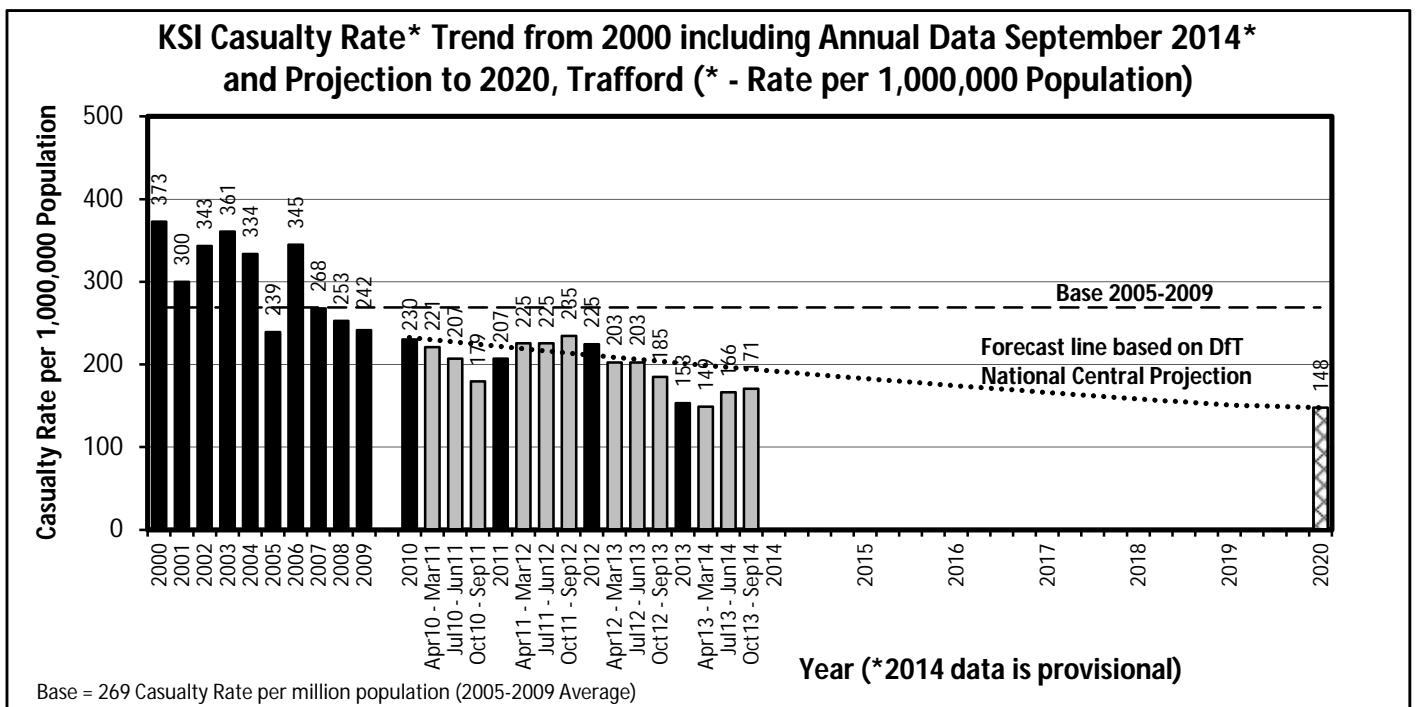
### KSI Casualty Rates: Casualty Rate Trend 2000 - September 2014 and Projection to 2020

The table shows Trafford KSI casualty rates\* from 2000 - September 2014 and forecast casualty reductions based on the DfT National Central Projection as outlined in the Strategic Framework for Road Safety. (\*based on ONS population projections).

KSI Casualty Rate Trend 2000 - September 2014 and Projection to 2020				
Year	KSI Casualty Totals**		Index	
	Actual	Projection	Actual	Projection
2000	373			
2001	300			
2002	343			
2003	361			
2004	334			
2005	239			
2006	345			
2007	268			
2008	253			
2009	242			
2005-2009 Baseline	269		100	
2010	230	232	86	86
2011	207	222	77	82
2012	225	211	83	78
2013	153	201	57	75
Apr 2013-Mar 2014	149	199	55	74
Jul 2013-Jun 2014	166	197	62	73
Oct 2013-Sep 2014	171	194	63	72
2014		192		71
2015		183		68
2016		174		65
2017		166		62
2018		158		59
2019		151		56
2020		148		55

Notes: \*\* - KSI rates per 1,000,000 population

Index is based on 2005-2009 average



# VISION 2020 FACTSHEET



**HIGHWAYS FORECASTING AND  
ANALYTICAL SERVICES**

**WIGAN KSI CASUALTY STATISTICS**

Latest 12 Months Data October 2013 to September 2014

## KSI Casualty Rates: Casualty Rate Trend 2000 - September 2014 and Projection to 2020

The table shows Wigan KSI casualty rates\* from 2000 - September 2014 and forecast casualty reductions based on the DFT National Central Projection as outlined in the Strategic Framework for Road Safety. (\*based on ONS population projections).

KSI Casualty Rate Trend 2000 - September 2014 and Projection to 2020				
Year	KSI Casualty Totals**		Index	
	Actual	Projection	Actual	Projection
2000	478			
2001	415			
2002	438			
2003	396			
2004	393			
2005	424			
2006	314			
2007	324			
2008	311			
2009	316			
2005-2009 Baseline	338		100	
2010	202	292	60	86
2011	267	278	79	82
2012	233	265	69	78
2013	204	253	60	75
Apr 2013-Mar 2014	201	250	59	74
Jul 2013-Jun 2014	213	247	63	73
Oct 2013-Sep 2014	198	244	58	72
2014		241		71
2015		230		68
2016		219		65
2017		209		62
2018		199		59
2019		190		56
2020		186		55

Notes: \*\* - KSI rates per 1,000,000 population

Index is based on 2005-2009 average

