

VISION 2020 FACTSHEET



**HIGHWAYS FORECASTING AND
ANALYTICAL SERVICES**

GREATER MANCHESTER KSI CASUALTY STATISTICS

Latest 12 Months Data July 2011 to June 2012

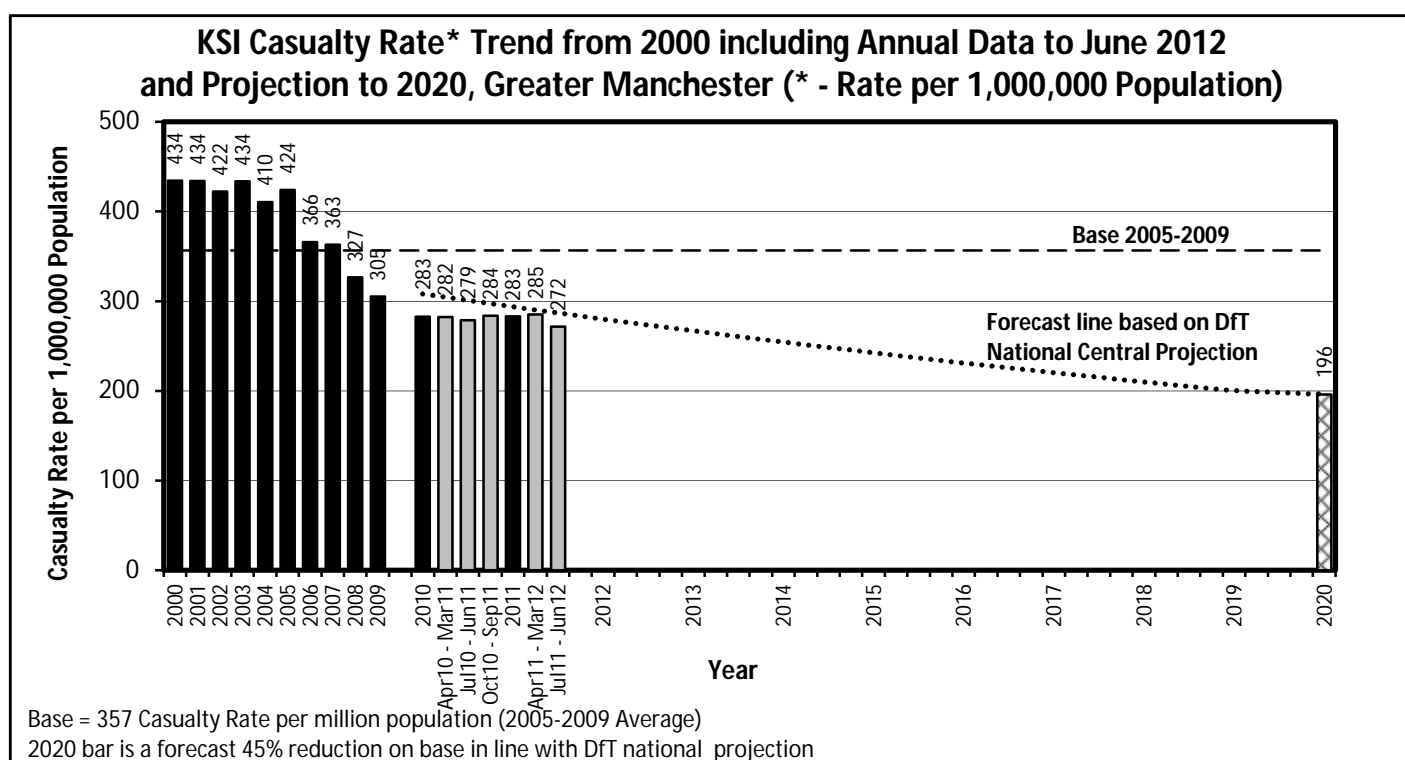
KSI Casualty Rates: Casualty Rate Trend 2000 - June 2012 and Projection to 2020

The table shows Greater Manchester KSI casualty rates* from 2000 - June 2012 and forecast casualty reductions based on the DfT National Central Projection as outlined in the Strategic Framework for Road Safety. (*based on ONS population projections).

KSI Casualty Rate Trend 2000 - June 2012 and Projection to 2020				
Year	KSI Casualty Rates**		Index	
	Actual	Projection	Actual	Projection
2000	434			
2001	434			
2002	422			
2003	434			
2004	410			
2005	424			
2006	366			
2007	363			
2008	327			
2009	305			
2005-2009 Baseline	357		100	
2010	283	308	79	86
2011	283	294	79	82
Apr 2011-Mar 2012	285	290	80	81
Jul 2011-Jun 2012	272	287	76	80
2012		280		78
2013		267		75
2014		254		71
2015		242		68
2016		231		65
2017		220		62
2018		210		59
2019		200		56
2020		196		55

Notes: ** - KSI rates per 1,000,000 population

Index is based on 2005-2009 average



Progress Towards KSI Casualty Rate* Reduction Forecast by District			
KSI Casualty Rates* (Progress Towards KPI 11)			
District	Base	Jul 11 to Jun 12**	Vision 2020
Bolton	357	248	196
Bury	349	239	192
Manchester	480	385	264
Oldham	355	332	195
Rochdale	343	234	189
Salford	392	323	216
Stockport	275	190	151
Tameside	296	226	163
Trafford	269	225	148
Wigan	338	211	186
Greater Manchester	357	272	196

Index of Progress Towards KSI Casualty Rate* Reduction Forecast by District			
KSI Casualty Rates* (Progress Towards KPI 11)			
District	Base	Jul 11 to Jun 12	Vision 2020
Bolton	100	69	55
Bury	100	69	55
Manchester	100	80	55
Oldham	100	94	55
Rochdale	100	68	55
Salford	100	82	55
Stockport	100	69	55
Tameside	100	76	55
Trafford	100	84	55
Wigan	100	63	55
Greater Manchester	100	76	55

Notes: Base = Average 2005-2009 = 100

* - KSI rates per 1,000,000 resident population

** - Uses figures provided by ONS for the mid-year estimate of population for 2010